

HB2005

Auto Pressure sensor

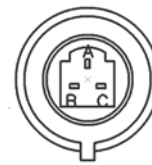
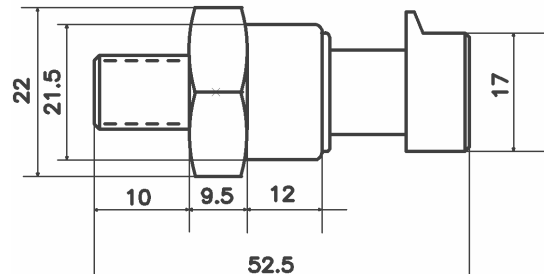
Features:

- Piezoresistive ceramic sensor
- AMP speciality interface
- Excellent EMC capability
- Excellent vibration & impact
- ECU nicer matching
- High Reliability、low cost



Applianec:

- Engine oil Samp pressuer sensor
- Air-condition pressuer sensor
- Drive turning
- Prevent slipment system
- Appent equipment



- A — Gnd Break
- B — Vcc Red
- C — Vout Yellow

Characteristic:

- operating pressure range
 - 0.1—10 bar (Engine oil sump pressuer sensor)
 - 0.1—35 bar (Engine oil sump pressuer sensor)
 - 0.1—45 bar (Drive turning)
 - 0.1—36 bar (air-condition pressuer sensor)
- Accuracy : $\pm 1.5\%$ (FS)
- Linearity : $\pm 0.8\%$ (FS)
- Totelize error :
 - 20—85°C : $\pm 2.5\%$ (FS)
 - 40—125°C : $\pm 3.5\%$ (FS)
- Operating voltage : 4.5—5.5Vdc
- Operating current : $< 0.5\text{mA}$
- Output load : $> 20\text{K}\Omega$
- Output conversion velocity : $0.3/\mu\text{S}$
- Mechanism interface : 1/4NPT 3/4NPT
- Vibration : 20-2000HZ 10g
- Impact : 15g
- Decline: 1 meter
- Over load : $> 300\%$
- Operation natural life : > 100 ten thousand
- Output voltage : 0—5V 0.5—4.5V

WUXI HAIBEI MICROELECTRONIC RESEARCH INSTITUTE

Add : wuxi west taihu garden 56-602 Pc : 214062 Tel : 0510-85817743 Fax : 0510-85817743
Mobile : 13861721288 13906174063 <http://www.skygreat.net> xcx@wst.net