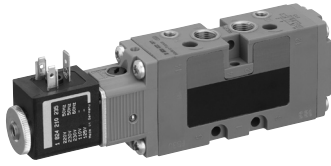


Directional valves → Electrically operated

5/2-way valve, Series RA18

► Qn = 700 l/min ► pipe connection ► compressed air connection output: G 1/8 ► Electr. connection: Plug, ISO 6952, form B ► Can be assembled into blocks ► single solenoid, double solenoid ► ATEX optional



00108915

Version	Spool valve, zero overlap
Pilot	internal
Sealing principle	soft sealing
Blocking principle	Single base plate principle
Mounting on manifold strip	P-strip, PRS strip
Ambient temperature min./max.	+0 °C / +50 °C
Medium temperature min./max.	-10 °C / +50 °C
Medium	Compressed air
Particle size max.	5 µm
Oil content of compressed air	0 mg/m³ - 5 mg/m³
Connector standard	ISO 6952
Duty cycle	100 %
Materials:	
Housing	Polyamide
Seals	Acrylonitrile Butadiene Rubber
Front plate	Polyamide
Threaded bushing	Brass

Technical Remarks

- The pressure dew point must be at least 15 °C under ambient and medium temperature and may not exceed 3 °C.
- The oil content of air pressure must remain constant during the life cycle.
- Use only the approved oils from Bosch Rexroth, see chapter „Technical information“.
- ATEX optional: ATEX version can be produced by combining the basic valve without coil with an ATEX coil.
ATEX ID: see ATEX coils catalog page.

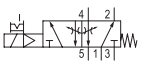

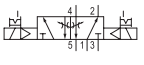

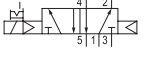

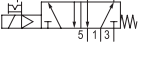

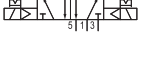
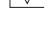
Operating voltage			Voltage tolerance			Power consumption	Switch-on power		Holding power	
DC	AC 50 Hz	AC 60 Hz	DC	AC 50 Hz	AC 60 Hz	DC	AC 50 Hz	AC 60 Hz	AC 50 Hz	AC 60 Hz
						W	VA	VA	VA	VA
24 V	-	-	-10% / +10%	-	-	4.8	-	-	-	-
24 V	-	-	-10% / +10%	-	-	2.6	-	-	-	-
-	24 V	24 V	-	-10% / +10%	-10% / +10%	-	12	9.9	8.5	7.3
-	110 V	110 V	-	-10% / +10%	-10% / +10%	-	11	9.4	8.5	6.9
-	230 V	230 V	-	-10% / +10%	-10% / +10%	-	11	9.4	8.5	6.9

	MO	Compressed air connection					Operating voltage			Flow rate value	Part No.
		Input	Output	Exhaust	Pilot connection	Pilot control exhaust	DC	AC 50 Hz	AC 60 Hz	Qn	
										[l/min]	
-		G 1/8	G 1/8	G 1/8	M5	M5	24 V	-	-	700	0820022102
-							24 V	-	-		0820022105
-							24 V	24 V	24 V		0820022103
-							110 V	110 V	110 V		0820022104
-							230 V	230 V	230 V		0820022101
-							-	-	-		0820022993

Directional valves → Electrically operated

5/2-way valve, Series RA18

► Qn = 700 l/min ► pipe connection ► compressed air connection output: G 1/8 ► Electr. connection: Plug, ISO 6952, form B ► Can be assembled into blocks ► single solenoid, double solenoid ► ATEX optional

	MO	Compressed air connection					Operating voltage			Flow rate value	Part No.	
		Input	Output	Exhaust	Pilot connection	Pilot control exhaust	DC	AC 50 Hz	AC 60 Hz	Qn		
										[l/min]		
		G 1/8	G 1/8	G 1/8	M5	M5	24 V	-	-	700	0820022126	
							24 V	-	-			0820022129
							-	24 V	24 V			0820022127
							-	110 V	110 V			0820022128
							-	230 V	230 V			0820022125
							-	-	-			0820022994
		G 1/8	G 1/8	G 1/8	M5	M5	24 V	-	-	700	0820022602	
							24 V	-	-			0820022605
							-	24 V	24 V			0820022603
							-	110 V	110 V			0820022604
							-	230 V	230 V			0820022601
							-	-	-			0820022995
		G 1/8	G 1/8	G 1/8	M5	M5	24 V	-	-	700	0820022002	
							24 V	-	-			0820022005
							-	24 V	24 V			0820022003
							-	110 V	110 V			0820022004
							-	230 V	230 V			0820022001
							-	-	-			0820022990
		G 1/8	G 1/8	G 1/8	M5	M5	24 V	-	-	700	0820022026	
							24 V	-	-			0820022029
							-	24 V	24 V			0820022027
							-	110 V	110 V			0820022028
							-	230 V	230 V			0820022025
							-	-	-			0820022991
		G 1/8	G 1/8	G 1/8	M5	M5	24 V	-	-	700	0820022502	
							24 V	-	-			0820022505
							-	24 V	24 V			0820022503
							-	110 V	110 V			0820022504
							-	230 V	230 V			0820022501
							-	-	-			0820022992
Part No.	Working pressure min./max.	Control pressure min./max.	Compatibility index	Protection class according to EN 60529	Weight	Note						
	[bar]	[bar]			[kg]							
0820022102	2 / 10	2 / 10	14	IP 65	0.26	2)						
0820022105	2 / 7	2 / 7	13	IP 65	0.26	2); 3)						
0820022103	2 / 10	2 / 10	14	IP 65	0.26	2)						
0820022104	2 / 10	2 / 10	14	IP 65	0.26	2)						
0820022101	2 / 10	2 / 10	14	IP 65	0.26	2)						
0820022993	2 / 10	2 / 10	14	-	0.19	1); 2); 4)						
0820022126	2.5 / 10	2.5 / 10	14	IP 65	0.26	2)						
0820022129	2.5 / 7	2.5 / 7	13	IP 65	0.26	2); 3)						

Nominal flow Qn at 6 bar and $\Delta p = 1$ bar

MO = Manual override

1) Basic valve without coil

2) with throttle

3) Low power consumption

4) ATEX certified: II 2G2D T4 T115°C

Part numbers marked in bold are available from the central warehouse in Germany, see the shopping basket for detailed information
Pneumatics catalog, online PDF, as of 2009-06-18, © Bosch Rexroth AG, subject to change

Directional valves → Electrically operated

5/2-way valve, Series RA18

► Qn = 700 l/min ► pipe connection ► compressed air connection output: G 1/8 ► Electr. connection: Plug, ISO 6952, form B ► Can be assembled into blocks ► single solenoid, double solenoid ► ATEX optional

Part No.	Working pressure min./max.	Control pressure min./max.	Compatibility index	Protection class according to EN 60529	Weight	Note
	[bar]	[bar]			[kg]	
0820022127	2.5 / 10	2.5 / 10	14	IP 65	0.26	2)
0820022128	2.5 / 10	2.5 / 10	14	IP 65	0.26	2)
0820022125	2.5 / 10	2.5 / 10	14	IP 65	0.26	2)
0820022994	2.5 / 10	2.5 / 10	14	-	0.19	1); 2); 4)
0820022602	1 / 10	1 / 10	14	IP 65	0.35	2)
0820022605	2 / 7	2 / 7	13	IP 65	0.35	2); 3)
0820022603	1 / 10	1 / 10	14	IP 65	0.35	2)
0820022604	1 / 10	1 / 10	14	IP 65	0.35	2)
0820022601	1 / 10	1 / 10	14	IP 65	0.35	2)
0820022995	1 / 10	1 / 10	14	-	0.23	1); 2); 4)
0820022002	2 / 10	2 / 10	14	IP 65	0.26	-
0820022005	2 / 7	2 / 7	13	IP 65	0.26	3)
0820022003	2 / 10	2 / 10	14	IP 65	0.26	-
0820022004	2 / 10	2 / 10	14	IP 65	0.26	-
0820022001	2 / 10	2 / 10	14	IP 65	0.26	-
0820022990	2 / 10	2 / 10	14	-	0.19	1); 4)
0820022026	2.5 / 10	2.5 / 10	14	IP 65	0.26	-
0820022029	2.5 / 7	2.5 / 7	13	IP 65	0.26	3)
0820022027	2.5 / 10	2.5 / 10	14	IP 65	0.26	-
0820022028	2.5 / 10	2.5 / 10	14	IP 65	0.26	-
0820022025	2.5 / 10	2.5 / 10	14	IP 65	0.26	-
0820022991	2.5 / 10	2.5 / 10	14	-	0.19	1); 4)
0820022502	1 / 10	1 / 10	14	IP 65	0.35	-
0820022505	2 / 7	2 / 7	13	IP 65	0.35	3)
0820022503	1 / 10	1 / 10	14	IP 65	0.35	-
0820022504	1 / 10	1 / 10	14	IP 65	0.35	-
0820022501	1 / 10	1 / 10	14	IP 65	0.35	-
0820022992	1 / 10	1 / 10	14	-	0.23	1); 4)

Nominal flow Qn at 6 bar and $\Delta p = 1$ bar

MO = Manual override

1) Basic valve without coil

2) with throttle

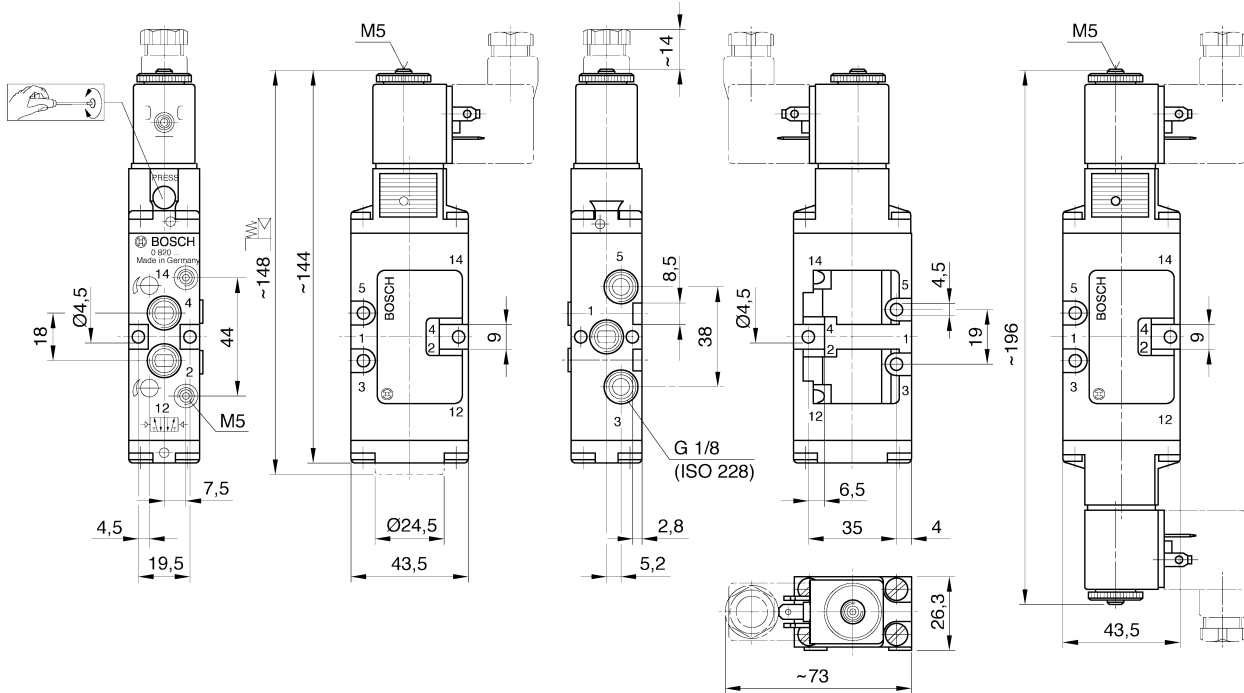
3) Low power consumption

4) ATEX certified: II 2G2D T4 T115°C

Directional valves → Electrically operated

5/2-way valve, Series RA18

► $Q_n = 700 \text{ l/min}$ ► pipe connection ► compressed air connection output: G 1/8 ► Electr. connection: Plug, ISO 6952, form B ► Can be assembled into blocks ► single solenoid, double solenoid ► ATEX optional

Dimensions

00108917