

GUANGZHOU
XINOU
MACHINERY CO., LTD



新欧机械



公司简介



广州市新欧机械有限公司的前身是“广州机床研究所液压机械工程技术服务部”，成立于1996年。后经改制成立“广州市新杰自动化有限公司”，2006年成立“广州市新欧机械有限公司”。

广州市新欧机械有限公司的工厂位于广州市黄埔区，注册资金500万，占地面积约2500平方米，现有职工总共80人，专业技术人员12人，其中拥有中级职称以上的4人，硕士以上学历人员3人。

公司是以设计、制造液压系统及液压测试专用设备为主业的企业。十余年的积累，对液压试验装置的设计、制造，有丰富的经验，可根据用户的要求，开发满足用户需要的产品。同时公司内部拥有各种相关专业造诣颇深的工程设计人员，及经验丰富的现场安装调试技术员工，为客户提供优质的服务保障。此外，公司是“兰州理工大学流体传动与控制专业”合作单位，“广东工业大学研究生实习基地”，还与广东工业大学共建“企校科技合作创新基地”。

公司通过ISO9001质量管理体系认证，实行严格的质量管理，保证产品出厂的质量。

公司提供专业的产品安装服务及设备的使用培训，以及液压元件的维修培训。

公司从事液压元件的销售工作有多年历史，从90年初期就成为意大利阿托斯ATOS液压元件一级代理以及ATOS南方技术服务中心，备有大量现货。同时也是德国力士乐Rexroth和美国威格士Vickers等全球知名液压品牌的经销商。在保证质量的同时，也能控制成本，缩短交货期。

公司设计、制造的液压试验台，用户包括川崎、住友、斗山、神钢、沃尔沃、三一、柳工、玉柴等工程机械主机厂或再制造企业，以及配套的液压件生产厂家，并被国内各地（含港澳）的专业工程机械维修公司采用，享有较高的美誉度。

服务厂商

KOBELCO 斗成工

SANY

LINGGONG 柳工

KAWASAKI

YANCOO

SUMITOMO

南理工大学
流体传动与控制专业合作单位

南理工大学
研究生实习基地

广州市新欧机械有限公司
Guangzhou Xinqi Machinery Co., Ltd.
理事单位
第一届中国
校企合作高峰论坛
暨颁奖盛典
2015年10月14日
广州工程职业技术学院

南理工大学
科技合作创新基地



Company profile



Guangzhou Xinou machinery Co., LTD, formerly "Guangzhou hydraulic machine mechanical institute engineering technical service department", established in 1996. After reform, "Guangzhou Xinjie automation Co., LTD" established. In 2006, "Guangzhou Xinou machinery Co., LTD" established.

Guangzhou Xinou machinery Co., LTD is located in Guangzhou Huangpu district , register fund is 5 million, covering an area of about 2,500 square meters. There are 80 employees, containing 12 specialized technical, 4 people have the intermediate title, 3 people have the master's degree.

The company is the enterprise whose main business is design and manufacture hydraulic system and hydraulic test special equipment. More than ten years of accumulation, Xinou have gained the rich experience in the hydraulic test apparatus design and manufacture, can according to the customer's requirements, to design the product. At the same time ,the company internal has all kinds of related professional who are quite deep attainments in engineering design, and experienced technical employees, provide customers with high quality service's guarantee. In addition, the company are "Lanzhou University of Technology fluid transmission and control department" cooperation unit and "Guangdong university of technology" graduate student exercitation base. The company has past the ISO9001 quality management system, is very strict with quality management, guarantee the quality of the goods.

We provide the professional product installation services and use of equipment training, as well as hydraulic components of maintenance training.

Company in hydraulic components sales work have many years of history, from early of 1990 , we gain the right of first class representative of Italian ATOS hydraulic components and become the South of China technology service center of ATOS, with a great quantity of inventory. What's more, we are the dealers of hydraulic products of Germany Rexroth, American Vickers and other global famous brands . From the top brand to affordable Taiwan homemade hydraulic components, can according to customers' need to selection the type and provide them. Ensure the quality at the same time, also can control cost, shorten delivered period.

The company design and manufacture hydraulic test equipment. Users include Kawasaki, Sumitomo, Doosan, Kobelco, Volvo, Sany, Liugong, Yuchai and other construction machinery manufacturers or remanufacturing enterprises, and hydraulic parts manufacturers. At the same time, our products have been used by the professional engineering machinery maintenance company all over the country (including Hong Kong and Macao), enjoy higher reputation.

液压试验台及液压测试专用设备设计、制造

The design and manufacture of hydraulic test equipment and hydraulic test bench

产品种类

- 按控制方式可分为：手动控制和电脑控制。 • 按数据采集方式可分为：人工采集和电脑采集。
- 按国家标准可做型式试验，测试精度A级；出厂试验，测试精度B级。

产品特点

- 电脑控制，性能电脑判定，自动化、智能化，节省人力，安全可靠
- 变频调速，转速范围广 0-3000r/min，适应不同转速泵；启动电流近零，节能环保；可超低速试运行，不会打烂泵。
- 过电流、过扭矩检测报警，过压检测报警，有效保护系统元件。
- 油泵吸口开关检测，防止干抽，有效保护被试油泵和系统油泵。
- 带多路比例电流控制器，满足各种电调泵和阀需要。
- 油箱、管路磷化、喷塑、烤漆处理，系统超常干净和美观。
- 油箱底部装有强磁铁，可以磁吸试验过程中可能进入的铁屑。
- 双导轨使泵法兰前后可移，适合不同安装轴长的泵，同时泵轴更易驱动联轴器。
- 预留升级接口，可以不断产品升级。
- 主要元器件均采用优质进口或国内名牌产品，质量可靠、性能稳定。

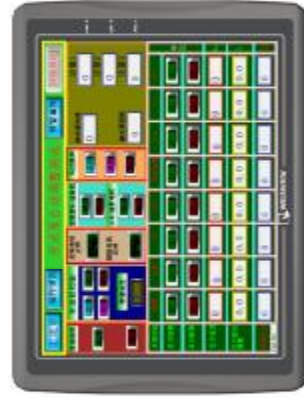


Product categories

- According to control mode can be classified as: manual control and computer control.
- According to data acquisition methods can be classified as: artificial collection and computer collection.
- According to the national standards may do the type testing, testing precision grade A, Factory test, test precision grade B.

The product features

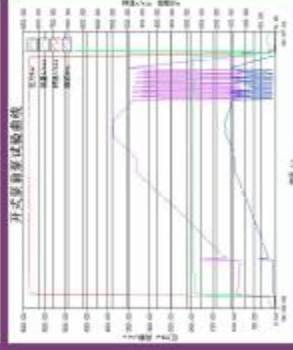
- Computer control performance computer judgement, automatic and intelligent, save manpower, safe and reliable
- Inverter speed range 0-3000r/min, adapt to different speed pump, Starting current near zero, energy conservation and environmental protection;
- Can exceed low-speed commissioning, won't smash pump. Over-current, torque detection alarm, over-voltage detection alarm and effective protection system components.
- Pump mouthpiece switch detection, prevent dry smoke and effective protection to pump oil pump and system.
- With multiple proportion current controller to meet all kinds of electric adjustable pump and valve needs.
- Tank, pipeline phosphating, plastic spraying, paint processing, the system supernormal clean and beautiful.
- Tank bottom equipped with strong magnet, can magnet test process may enter the iron.
- Double guide rails before and after the pump flange can move, suitable for different installation shaft long pump, meanwhile pump shaft drive more into couplings.
- Obligate upgrade interface can be continuously upgrade.
- Main components are imported quality or domestic famous brand products, reliable quality and stable performance.



主要产品介绍 Main product introduction

液压综合实验台 Hydraulic comprehensive test bench

产品名称 Product name	液压综合实验台 Hydraulic comprehensive test bench	
功能 Function	<p>液压综合实验台适用于各类通用液压元件的性能测试,可满足不同用户的测试要求。液压综合实验台分五个品种:即液压阀试验台、液压泵试验台、液压马达试验台、液压缸试验台和综合试验台;该系列试验台设计了多种配置,例如比例控制系统、数字显示系统、变频调速系统和计算机测控系统等,用户可根据需要选配。</p> <p>Hydraulic components test bench applicable to all kinds of general hydraulic components of the performance test, can satisfy different users' testing requirements. Hydraulic components test bench is classified as five varieties: hydraulic valve test rig, hydraulic pump test bench and hydraulic motor test rig, hydraulic cylinder test rig and comprehensive test bench. This series of test bench has designed various configuration, for example: proportional control system, digital display system, variable frequency speed regulation system and computer measurement and control system etc, the user can select it according to your need.</p>	
性能参数 Performance parameters	满足标准 Meet standards 总功率 Total power 试验压力 Range of test pressure 流量范围 Range of flow rate 转速范围 Range of rotational speed	国家标准 National standards 行业标准 Industry standards 75KW, 90KW, 110KW, 132KW, 160KW, 315kw, 350kw 0~40MPa 0~500L/min 0~3000r/min
结构组成 Composition	由动力系统、液压控制系统、调速温控循环系统、漏油回收系统、电气控制系统、计算机控制与测试采集系统等组成 Dynamic system, hydraulic control system, hydraulic oil filter temperature control system and electric control system, data acquisition test system	
适用范围 Applicable area	适用于工程机械、冶金、石油、机械、航天、船舶等领域的液压元件的性能测试 It apply to performance test of the hydraulic components that supported by a host in engineering machinery, metallurgical, petroleum, machinery, aerospace, shipbuilding and other fields.	



液压泵试验台 Hydraulic pump test bench

产品名称 Product name	液压泵试验台 Hydraulic pump test bench	
功能 Function	<p>该试验台可测试液压柱塞泵、叶片泵、齿轮泵等的动、静态性能，（高级的配备 CAT 计算机辅助测试系统）。测试范围、测试项目、测试要求符合 JB/T7039~7044 等有关规定。</p> <p>The test bench can test the dynamic and static performance of the hydraulic piston pump, the vane pump, the gear pump and so on. (Advanced computer aided testing system equipped with CAT). The test range, the test items and the test requirements are consistent with the JB/T7039-7044 and other relevant industry standards.</p>	
性能参数 Performance parameters	<p>①空载跑合试验；②效率测定（包括排量测定、容积效率及总效率测定）；③超载性能试验；④变量机构变量特性测试；⑤冲击试验；⑥过程参数监测；包括试验过程中的噪音、振动、温升、运动平稳性监测等。</p> <p>① No-load running test; ② Determination of efficiency (including the determination of displacement, the volumetric efficiency and the total efficiency determination); ③ Overload test; ④ The variable characteristics test of the variables agencies; ⑤ Impact test; ⑥ Monitoring of process parameters: monitor noise, vibration, temperature and motion stability and so on, which are generated in the testing process.</p>	
满足标准 Meet standards	GB/T7936, JB/T7039, JB/T7042, JB/T7043, JB/T7044	
总功率 Total power	59KW, 75KW, 90KW, 132KW, 160KW, 200KW, 250KW, 315KW, 350KW	
试验压力 Range of test pressure	0~40MPa	
流量范围 Range of flow rate	0~500L/min	
转速范围 Range of rotational speed	0~3000r/min	
系统温度控制模式 System temperature Control mode	水冷、风冷、冷冻机冷却 Water cooling, Electricity cooling, Freezer cooling	
液压控制回路 Hydraulic control circuit	开式或闭式 Open or closed	
旋转方向 Rotation direction	可双向回转 Reversible rotation	
结构组成 Composition of the structure	动力驱动系统，液压控制系统，液压油过滤温控系统，电气控制系统，数据采集测试系统 Dynamic system, the hydraulic control system, the hydraulic oil filter temperature control system, the electrical control system, the data acquisition test system.	
适用范围 Application area	液压柱塞泵、叶片泵、齿轮泵(单联，双联，多联泵)，开式泵、闭式泵 Hydraulic piston pump, vane pump, gear pump (single, double, multi-pump), open pump, closed pump.	



液压马达试验台 Hydraulic motor test bench

产品名称 Product name	液压马达试验台 Hydraulic motor test bench	
功能 Function	<p>液压马达可采用开式和功率回收方式试验。试验参数通过传感器、数据采集、显示、工控机实现数据采集、处理、打印特性曲线、性能曲线和效率曲线、试验报告和数据库管理等。</p> <p>Hydraulic motor can adopt open-type and power recovery mode test. Test parameters through the sensor, data acquisition, display, industrial PC realization of data acquisition, processing, printing characteristic curve, the performance curve and etc efficiency curve, test reports and data management, etc.</p>	
试验项目 Test projects	<p>①空载磨合试验；②启动转矩试验；③功率测定（n、T）及效率测定（包括排量测定、容积效率及总效率测定）；④超载性能试验；⑤低速稳定性试验；⑥变量机构变量特性测试；⑦冲击试验；⑧过程参数监测；包括试验过程中的噪音、振动、升温、运动平稳性监测等。</p> <p>① No-load running-in trials, ② Start torque testing; ③ Power measurement (n, T) and efficiency measurement (including displacement measurement, volume efficiency and total efficiency determined); ④ Overload performance testing; ⑤ Low-speed stability testing, ⑥ Variable institutions variable characteristics testing, ⑦ Impact test, ⑧ Process parameters monitor: including experimental process of noise, vibration, normal temperature, running smoothness monitoring, etc.</p>	
性能参数 Performance parameters	<p>满足标准 Meet standards</p> <p>总功率 Total power</p> <p>试验压力 Range of test pressure</p> <p>流量范围 Range of flow rate</p> <p>转速范围 Range of rotational speed</p> <p>最大扭矩 The maximum torque</p>	<p>JB/T8726, GB/T7936, GB/T13853, JB/T 10829-2008, GB20421, GB/T 17491</p> <p>132KW, 160KW, 200KW, 250KW, 315KW, 350KW</p> <p>0-40MPa</p> <p>0-600L/min</p> <p>0-3000r/min</p> <p>10000NM</p>
结构组成 Composition of the structure	<p>系统温度控制模式 System temperature Control mode</p> <p>动力系统，液压控制系统，液压油过滤温控系统，电气控制系统，数据采集测试系统 Dynamic system, hydraulic control system, hydraulic oil filter temperature control system and electric control system, data acquisition test system</p>	
适用范围 Application area	<p>高速马达、低排量扭矩马达 High speed motor, low torque motor</p>	



液压多路阀试验台 Hydraulic multi-channel valve test bench

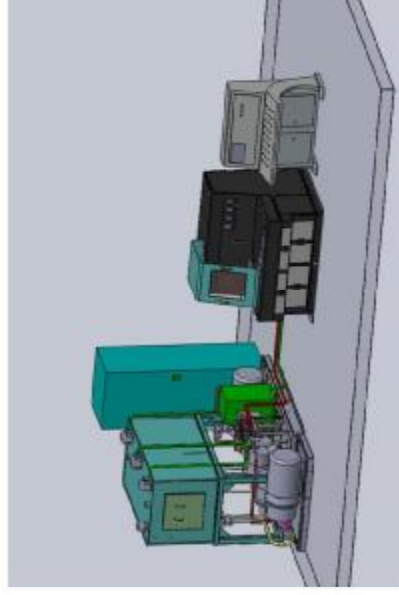
<p>产品名称 Product name</p>	<p>多路阀试验台 Hydraulic multi-channel valve test bench</p>
<p>功能 Function</p>	<p>液压阀试验台采用柜式结构，液压试验系统、液压测试传感器、漏油回收系统安装在柜内，试验台面上装有压力表、压力表开关、测量一次仪表、试验件连接油口和试验平台等，可方便地连接试验元件，并获得测量参数，而且便于现场对试验过程及参数变化观测。试验参数通过传感器、数据采集与工控机实现静态数据收集、处理、打印压力损失曲线、内泄漏曲线、安全阀零压力特性曲线、换向阀换向特性曲线和安全阀瞬态响应特性曲线、试验报告和数据库管理等</p> <p>Hydraulic valves test benchs usually adopts cabinet type structure, hydraulic test systems, hydraulic testing sensors, oil recovery system installation inside cabinet, test surface with pressure gauge, switch, of pressure, measuring instruments, test pieces once connected oil mouths and test platform, convenient connection was try components, and obtain the measuring parameters, and facilitating the site test process and parameter variations observed. Test parameters through sensor, data acquisition and industrial PC realize static and dynamic data acquisition, processing, printing pressure loss curve, internal leakage curve, the relief valve pressure characteristic curve, reversing valves budge characteristic curve and relief valve transient response characteristic curve, the test reports and data management, etc.</p>
<p>试验项目 Test projects</p>	<p>①主安全阀设定压力验证 ②换向性能③中位泄漏试验④换向位泄漏试验⑤耐压试验 ① The main valve setting pressure validation ② Commutation performance ③ Median leak test ④ Reversing a leak test ⑤ Withstand test</p>
<p>性能参数 Performance parameters</p>	<p>满足标准 Meet standards JB/8729.2-1998《液压多路换向阀试验方法》 The hydraulic multi-way directional valve test method</p> <p>总功率 Total power 55KW, 75KW, 90KW, 132KW, 160KW</p> <p>试验压力 Range of test pressure 0~40MPa</p> <p>流量范围 Range of flow rate 0~500L/min</p> <p>转速范围 Range of rotational speed 0~3000r/min</p> <p>系统温度控制模式 System temperature Control mode 水冷、风冷、冷冻机冷却 Water cooling, Electricity cooling, Freezer cooling</p>
<p>结构组成 Composition</p>	<p>泵站、液压试验系统、加载台架、加载台架、漏油回收泵站、电气控制系统及计算机数据采集系统等组成。 Pump station, hydraulic test system, test bench, loading test bench, leaked oil recovery pump station, electric control system and computer data acquisition system etc.</p>
<p>适用范围 Application area</p>	<p>多路换向阀、流量放大阀、流速调节阀、速度调节阀、速度-流量调节阀、速度-压力调节阀等 Multi-way directional valve, flow amplification valve, velocity-varied valves, etc</p>





常规阀试验台 General valve test bench

产品名称 Product name	常规阀试验台 General valve test bench	
功能 Function	<p>该实验台可测液压方向阀、压力阀和流量控制阀三大类液压控制阀的动、静态性能配合CAT计算机械辅助测试系统。测试范围、测试项目、测试要求符合 GB/T8104、GB/T8105、GB/T8106等美国国家标准。</p> <p>The test bench can test the dynamic and static performance of the main three types of hydraulic control valve that are the hydraulic directional valve, the pressure valve and the flow control valve, and has configured computer aided testing system equipped with CAT. The test range, the test items and the test requirements are consistent with the GB/T8104, GB/T8105, GB/T8106 and other relevant national standards.</p>	
试验项目 Test projects	<p>电磁换向阀：①换向机能检测；②换向性能试验；③压力损失测定；④流量特性测定；⑤内、外泄漏测定。溢流阀、顺序阀、减压阀：①耐压性；②调压范围及压力稳定性；③内泄流量；④压力损失；⑤稳态压力流量特性；⑥密封性。流量阀：①耐压性；②流量调节范围及最小稳定流量；③内、外泄漏测定；④进口压力变化对调节流量的影响。单向阀：①耐压性；②内泄流量；③正向压力损失；④开启压力；⑤密封性。</p> <p>Solenoid commutation valve :① Functional test of the commutation valve;② Commutation performance test;③ Test of pressure loss;④ Flow characteristics test;⑤ Internal and external leakage test. Relief valves, sequence valves, pressure relief valve:① Resistance to pressure;② Regulating pressure range and pressure stability;③ Internal leakage;④ Pressure loss;⑤ Steady-state pressure-flow characteristics;⑥ Sealing performance;⑦ Flow valve:① Resistance to pressure;② Flow adjust range and the minimum stable flow;③ Internal and external leakage test;④ Regulating flow influenced by inlet pressure changed, check valve;⑤ Resistance to pressure;⑥ Internal leakage;⑦ Positive pressure loss;④ Opening pressure;⑤ Sealing performance</p>	
性能参数 Performance parameters	满足标准 Meet standards	GB/T8104、GB/T8105、GB/T8106
	总功率 Total power	55KW、75KW、90KW、132KW、160KW、200KW、250KW
	试验压力 Range of test pressure	0~35MPa
	流量范围 Range of flow rate	0~500L/min
	转速范围 Range of rotational speed	0~3000r/min
	系统温度控制模式 System temperature Control mode	水冷、风冷、冷态机冷却 water cooling, Electricity cooling, Freezer cooling
结构组成 Composition	动力系统，液压控制系统，液压油过温监控系统，工作安装夹紧装置，电气控制系统，数据采集测试系统 Dynamic system, the hydraulic control system, the hydraulic oil filter temperature control system, the workpiece clamping device, the electrical control system, the data acquisition test system.	
适用范围 Application area	液压方向阀、压力阀和流量控制阀三大类液压控制阀 The main three types of hydraulic control valves about hydraulic directional valve, pressure valve and flow control valve.	

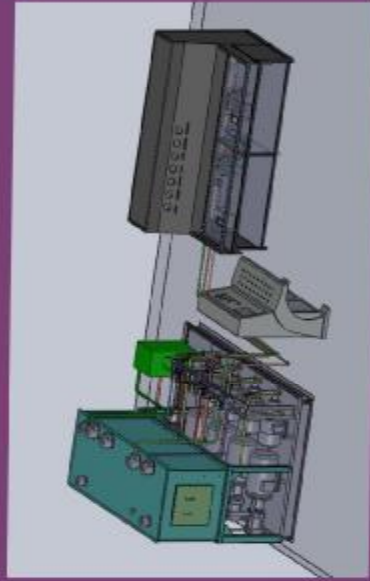


电液伺服阀试验台 Electric-hydraulic servo valve test bench

产品名称 Product name	电液伺服阀试验台 Electric-hydraulic servo valve test bench	
功能 Function	<p>电液伺服阀测试，试验参数通过传感器、数据采集与工控机实现静态动态数据采集、处理、打印压力损失曲线、内泄漏曲线、安全阀等压力特性曲线、换向阀微动特性曲线</p> <p>The electric-hydraulic servo valve testing, test parameters through sensor, data acquisition and industrial PC realize static and dynamic data acquisition, processing, printing pressure loss curve, internal leakage curve, the relief valve pressure characteristic curve, reversing valves budge characteristic curve</p>	
试验项目 Test projects	<p>1 静态特性的测试：空载流量特性，负载流量特性，压力增益特性，内部泄漏特性，压力脉冲试验，耐压试验，其他特性：分辨率，抗污染能力，耐久性，环境试验等</p> <p>2 动态特性的测试：频率响应特性，瞬态响应特性</p> <p>1 Static characteristic test: no-load flow characteristic, load flow characteristics, pressure gain characteristics, internal leakage characteristics, pressure pulse test, withstand test, other properties: resolution, tight pollution capabilities, durability and environmental testing, etc</p> <p>2 The dynamic characteristics of test: frequency response characteristics, the transient performance</p>	
性能参数 Performance parameters	满足标准 Meet standards	电液伺服阀的测试标准 GB/T15623
	总功率 Total power	55KW, 75KW, 90KW, 132KW, 160KW
	试验压力 Range of test pressure	0~31.5MPa
	流量范围 Range of flow rate	0~500L/min
	转速范围 Range of rotational speed	0~3000r/min
	系统温度控制模式 System temperature Control mode	水冷、风冷、冷冻机冷却 Water cooling, Electricity cooling, Freezer cooling
结构组成 Composition	泵站、液压试验系统、试验台架、加载台架、漏油回收泵站、电气控制系统及计算机数据采集系统等组成。 Pump station, hydraulic control system, test bench, loading test bench, leaked oil recovery pump station, electric control system and computer data acquisition system etc.	
适用范围 Application area	电液伺服阀检测 The electric-hydraulic servo valve testing	

油缸试验台 Cylinder test bench

产品名称 Product name	油缸试验台 Cylinder test bench
功能 Function	<p>液缸试验台可以对各种工程油缸进行性能测试, 试验参数通过传感器、数据采集、显示、工控机实现数据采集、处理、打印特性曲线、性能曲线和效率曲线、试验报告和数据管理等。</p> <p>Cylinder test bench can do performance test for the various engineering fuel tank, the test parameters through sensors, data acquisition, display and industrial computer can bring about data acquisition, processing, printing characteristic curve, the performance curves and efficiency curves, test reporting and data management.</p>
试验项目 Test projects	<p>① 空载往复跑合试验; ② 启动压力测定; ③ 超载性能试验; ④ 冲击试验; ⑤ 缓冲试验; ⑥ 泄漏试验; ⑦ 行程检测; ⑧ No-load running back and forth test; ⑨ Starting pressure test; ⑩ Overload performance test; ⑪ Impact test; ⑫ Buffer leakage test; ⑬ Leak test; ⑭ Travel detection.</p>
性能参数 Performance parameters	<p>满足标准 Meet standards GB/T 15622-2005 《液缸试验方法》</p> <p>总功率 Total power 55KW, 75KW, 90KW, 132KW, 160KW</p> <p>试验压力 Range of test pressure 0-50MPa</p> <p>流量范围 Range of flow rate 0-500L/min</p> <p>转速范围 Range of rotational speed 0-3000r/min</p> <p>系统温度控制模式 System temperature Control mode 水冷、风冷、冷冻机冷却 Water cooling, Electricity cooling, Freezer cooling</p>
结构组成 Composition	动力系统, 液缸控制系统, 液缸油过滤温控系统, 工件安装夹紧装置, 电气控制系统, 数据采集测试系统 Dynamic system, the hydraulic control system, the hydraulic oil filter temperature control system, the workpiece clamping device, the electrical control system, the data acquisition test system.
适用范围 Application	各种工程油缸 Various engineering cylinder



液压系统及非标设备

(机电液气一体化)设备设计、制造

Hydraulic system and the non-standard equipment (mechatronics hydraulic pneumatic integration) equipment design and manufacture



液压油泵维修、系统维修

电气工程、机电设备自动化改造与检修

Hydraulic pumps maintenance, hydraulic system maintenance, The electrical engineering, electrical equipment automation reconstruction and overhaul.





代理销售

Agent sales



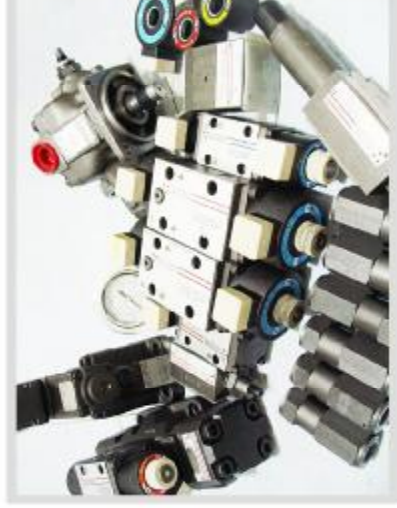
意大利ATOS(阿托斯)液压元件一级代理、ATOS南方技术服务中心
台湾东元TECO变频器广州特约经销商
经销德国力士乐Rexroth、美国威格斯VICKERS 液压元件



First class representative of Italian ATOS hydraulic components , South of China
technical service center of ATOS.

Taiwan TECO inverter guangzhou authorized dealer.

Sales Germany Rexroth Rexroth, American VICKERS hydraulic components, Taiwan
YEESEN hydraulic pump.



售后服务、技术支持

The after-sales service the technical support

- 1、提供培训及多种液压技术资料。
 - 2、24小时技术服务，服务电话：020-82333916。
 - 3、省内24小时到厂故障处理服务并提供免费的技术咨询和软件升级服务。
 - 4、我方提供常用备件库存。常用备件24小时内提供，重大或不常用备件30天内提供。
- 1、 Provide training and various hydraulic technical information.
 - 2、 24-hour technical service, service telephone: 020-82333916.
 - 3、 Among province, we can, within 24 hours, arrive at the place to deal with the trouble and provide free technical consulting and software upgrade services.
 - 4、 We provide commonly used spare parts inventory. Commonly used spare parts within 24 hours, major or unusual provide spare parts provided within 30 days.

The typical case 典型案例

武汉千里马机械有限公司

Wuhan qianlima machinery Co., LTD. integrated hydraulic components test bench 350KW Control room
武汉千里马机械有限公司液压元件综合试验台350KW操控间 ①

Wuhan qianlima machinery Co., LTD. integrated hydraulic components test bench 350KW The test room
武汉千里马机械有限公司液压元件综合试验台350KW试验间 ②



我公司客户“武汉千里马工程机械再制造有限公司”，被入选工业和信息化部《机电产品再制造试点单位名单（第一批）》，我公司提供的液压综合试验台为其评选的重要硬件之一。

Our customer ,Wuhan qianlima machinery Co., LTD, was listed as Mechanical and electronic products remanufacturing pilot unit list(The first group).of Ministry of industry and information of China,our company provides comprehensive Hydraulic test bench for its selection of hydraulic one of the most important hardware.

川崎（深圳）液压油泵试验台150KW,35MPa,400L/min
Kawasaki(kénshēn)Hydraulic pumps test bench, 150KW ,35MPa, 400L/min



广东省消防试验台 150KW,35VPa,600L/min
Guangdong fire corps hydraulic test bench 150KW,35MPa,600L/min



成都神钢工程机械集团有限公司



成都神钢液压综合试验台采集界面实物图
315KW, 40MPa, 500L/min
Rendering of Kobelco Hydraulic test bench



肇庆世高机械公司挖掘机油缸试验台75KW, 50MPa, 200L/min
Zhaoding shi-gao machinery company of excavator, the cylinder test bench 75KW, 50MPa, 200L/min.

住友精密(宁波)有限公司液压综合试验台, 100KW, 40MPa, 500L/min
Sumitomo precision (ningbo) Co., LTD Comprehensive Hydraulic test bench, 110KW, 40MPa, 500L/min



香港油鸿公司试验台 160KW, 35MPa, 600L/min
Health and HK Limited Hydraulic test bench 160KW, 35MPa, 600L/min





广州市新欧机械有限公司

地址 广州市黄埔东路1号东城国际2302室

邮编/Zipcode 510700

Address East city international 2302.

Huangpu east road, NO. 1, Guangzhou

电话/Phone 020-66636068

15360866249

传真/Fax 020-62614381

Email atosgz@163.com

Http:// www.xinoujixie.com

www. gzatos.com

厂址 广州市黄埔区沙浦东路沙浦后街13号

Factory address Shapu back street 13, Shapu east road,

Huangpu district, Guangzhou

电话/Phone 020-62953696

82333916

传真/Fax 020-62614381

