



METALS INTERNATIONAL LIMITED





Contents

- 1. Company Profile**
- 2. Organization Chart**
- 3. Quality Certificate**
- 4. Carbon Welded Pipe**
- 5. Coated Pipe**
- 6. OCTG**
- 7. Ductile Iron Pipe**
- 8. Boiler Tube**
- 9. Stainless Steel Tube**
- 10. Titanium Tube**
- 11. Copper Tube**
- 12. Steel Plate**
- 13. Pipe Fittings**
- 14. Flanges**
- 15. Valves**
- 16. Fasteners**
- 17. Reference List**



Company Profile

Metals International Limited offers a comprehensive portfolio of tubular products, fittings and steel products including ERW pipe, longitudinal welded pipe (LSAW/DSAW), spiral/helical welded (SSAW) pipe, black/galvanized tube, carbon seamless pipe, stainless steel tubes, FBE/2LPE/3LPE/2LPP/3LPP coated pipes, concrete weighted coated (CWC) pipes, ductile iron pipe, copper tube, CRA line pipe, clad pipe, coil tube, aluminum pipe, HDPE pipe, titanium tube, induction bends, monolithic isolating joints, flanges, pipe fittings, fasteners and other steel products.

All our products are manufactured by latest manufacturing techniques with machines and equipments which fitted highest technology, in order to provide the manufacturing of products in full conformity with international standards with high quality materials in production in line with its carefully set policies for sustainable quality; as possessing API-5L PSL1/PSL2, ISO 3183-1/2/3, DNV OS-F-101, API 5CT, API 5DP, API 5LC, API 5LD, API 5LCP, API 5ST, API 6A, API 6H, API 2B, AS 1163, AS 2885, ASTM A252, ASTM A 671, ASTM A672, ASTM A691, EN10208, CSA Z245.1, GOST 20295, IPS-M-PI-190, KOC-MP-019, AWWA C200, NACE MR0175, NACE TM0177, NACE TM0284, CSA Z245.20/CSA Z245.21, DIN 30670, DIN 30678, ASTM A213, ASTM A269, ASTM A312, ASTM A789, ASTM A2531, EN545, EN598, ASTM B68, ASTM B75, ASTM B111, ASTM B338, ASTM A283, ASTM A285, ASTM A515, ASTM A516 and other international specifications. They are also approved by Third Party Inspection Agencies like DNV, BV, SGS, Moody, TUV, ABS, LR, GL, PED, RINA, KR, NKK, AIB-VINEOTTE, CEIL, VELOSI, CCSI, etc.

We are the approved Corporate Member of The Australian Pipeline Industry Association Ltd (APIA), Deep Foundation Institute (DFI), and Pile Driving Contractors Association (PDCA).

We have successfully completed the following projects:

1. MOGE Project, Myanmar

- (1) 9700 metric tons of 273.1x9.93mm API 5L X36 ERW Line Pipe as the first ERW Line Pipe exported to Myanmar (TPI: CCSI)
- (2) 25000 metric tons of 20" ERW Steel Line Pipe 620,495.43 Ft (117.518 Miles) and with 3 Layer P.E Coating 10,560.00 Ft (2 Miles) as the largest line pipe order to Myanmar (TPI: CCSI)

2. Ambatovy Project, Madascar:

- (1) 38000 metric tons (547,000 meters) of 609.6x7.92-17.48mm 3LPE coated API X70 PSL 2 ERW line pipe as the first and highest ERW line pipe ex-China (TPI: SGS);
- (2) 20,000 metric tons of 1016/1219.2x22mm/762x9.53mm API 5L X52 & ASTM A672 Class 70 3LPE coated UOE DSAW/LSAW line pipe (TPI: SGS);
- (3) 305MT of 24" API 5L X70 PSL 2 Dual Fusion Bonded Epoxy Coated Induction Bends (TPI: SGS);

3. New Skikda LNG Project, Algeria:

- (1) 105,000 metric tons of 508x12.7mm/609.6x12.7mm ERW/ spiral welded steel pipe



METALS INTERNATIONAL LIMITED

as one of the biggest line pipe order ex-China (TPI: Moody International);

4. Australia Energy Project

(1) 945 Metric Tons of 38.1-762 ASTM A106 B, ASTM A210 C, ASTM A213 T11, ASTM A335 P11/P22 Boiler Tube & Pipe (TPI: BV);

5. LNG Project Papua New Guinea

(1) 1580.838 Metric Tons of 609.6x15.9mm & 229.514 Metric Tons of 406.4x9.5mm API 5L X52 PSL2 ERW Line Pipe as the first ERW Steel Pipe exported to PNG.

6. Ambarli Project, Turkey

(1) 1200 metric tons of 38.0x2.6-5.0x19650mm ASME SA213 T11/T22 Boiler Tube as one of the biggest boiler tube order ex-China (TPI: Moody International);

7. QCLNG Pipeline Project

(1) as Baosteel's agent, supplied 207,000 metric tons of 42" API 5L X70 PSL 2/AS 2885-1/AS3862 UOE DSAW DFBE coated line pipe for QGC LNG Pipeline Project in Australia as the first line pipe produced according to Australian Standard AS2885-1 (TPI:ITI);

(2) 755MT of 1067mm API 5L X70 PSL 2 Induction Bends (TPI: TGRC);

8. Lilydale LNG Project, Australia

(1) 735 metric tons of 323.9x7/13.5mm API 5L X56, AS 2885-1, AS3862 HF-ERW Dual FBE coated line pipe (TPI: Moody International);

9. Jebel Ali Refinery Plant Project

(1) 1860 metric tons of 21.3-457.2mm API 5L X52 PSL 2 Seamless Line Pipe (TPI: Moody International);

10. Santos Gladstone LNG Upstream Project, Australia

(1) 2960 metric tons of 21.3-914.4mm ASTM A106 B/API 5L Grade B PSL 2 Seamless Pipe+DSAW Pipe with Charpy V-Notch Test at -29°C for ≥ 12.7 mm W.T. (TPI: BV)

11. Casing Pipe

(1) 4000 ft (170.554 metric Tons) of 20"x94ppf, API 5CT H40, STC ERW Casing as the first casing exported to Ecuador;

(2) 535 metric tons of 2 7/8" API 5CT J55 & 13 3/8" API 5CT N80 Seamless casing as the first casing exported to New Zealand (TPI:SGS);

(2) 2472.93 metric tons of 4 1/2"-9 5/8" API 5CT K55 BTC Seamless Casing Pipe to Australia;

12. Pressure Vessel Plate

(1) 3760 metric tons of 1500x10x6096mm/1800x12x6096mm/1829x20x6096mm ASTM A283 C to Bangladesh (TPI: SGS)

(2) 2441.7 metric tons of 1500x24x12000mm ASTM A283 C to Iran

The following products are available:

1. Carbon Steel Pipe

1.1 Welded Pipe:

UOE/JCOE Longitudinal Welded Pipe (LSAW/DSAW) ,
High Frequency Electric Resistance Welded Pipe (HFI ERW),



**Casing Pipe,
Helical/Spiral Welded Pipe (HSAW/SSAW)
Black/Galvanized Tube
Hollow Structural Section(SHS/RHS)
Structural Pipe and Piling**

1.2 Seamless Pipe:

**Line Pipe
Oil Country Tubular Goods (OCTG),
Alloy Pipe
Low-Medium-High Pressure Tubes,
Oil Cracking Tube,
Boiler Tuber
Oil Tube
Heat Exchanger and Condenser Tube
Super-heater Tube
Flowline Tube
Chemical Fertilizer Tube
Bearing Tube
U-Tube
Inner Ribbed Tube
Finned Tube
Mechanical Tube
Structural Pipe
Cylinder Pipe
Hydraulic Pressure Supporting Pipes
Pressure Vessel Pipe
Shipbuilding Pipes
Hot-Expanded Pipe**

2. Anti Corrosion Coating

2.1 External Coating

**Fusion Bonded Epoxy Coating
2/3 Layer Polyethylene Coating
2/3 Polypropylene Coating
Polyurethane Coating
Bitumen Coating
Coal-Tar Enamel Coating**

2.2 Epoxy Lining

**Bitumen Lining
Cement Mortar Lining
Concrete Weighted Coating**

3. Stainless Steel Pipe

3.1 Welded Pipe:

**Electric Fusion Welding Pipe (EFW)
UOE Longitudinal Welded Pipe
Heat Exchanger & Condenser Tube**



Furniture & Sanitary Tube

3.2 Seamless Pipe:

- Boiler Tube
- Heat Exchanger & Condenser Tube
- Oil Tube
- Flowline Tube
- Chemical Fertilizer Tube
- Mechanical Tube
- Structural Pipe
- Hot-Extruded Tube
- Evaporator Tube
- Nuclear Power Tube
- Super Critical Tube
- Super Superheater Tube

4. Ductile iron pipe

- Push-on joint(T-type)
- Mechanical joint(K-Type)
- Socket-End Flange Joint(N1-Type)

5. Copper Tube

- Air Conditioner & Refrigerator Copper Tube
- Water & Gas Copper Tube
- Turbine Condenser Tube
- Pancake Coils
- Level Wound Coils

6. Steel Plate

- Corrosion Resistance Steel Plate
- Structural Steel Plate
- Ship-Construction Steel Plate
- Bridge Construction Steel Plate
- High Strength Steel Plate
- Pressure Vessel Steel Plate
- Stainless Steel Plate
- Pregalvanised Sheet
- Aluminum Sheet
- Color Paint Steel Plate
- Clad Plate

Our Mission

We help our clients make more money by bringing companies together and creating win-win partnerships.

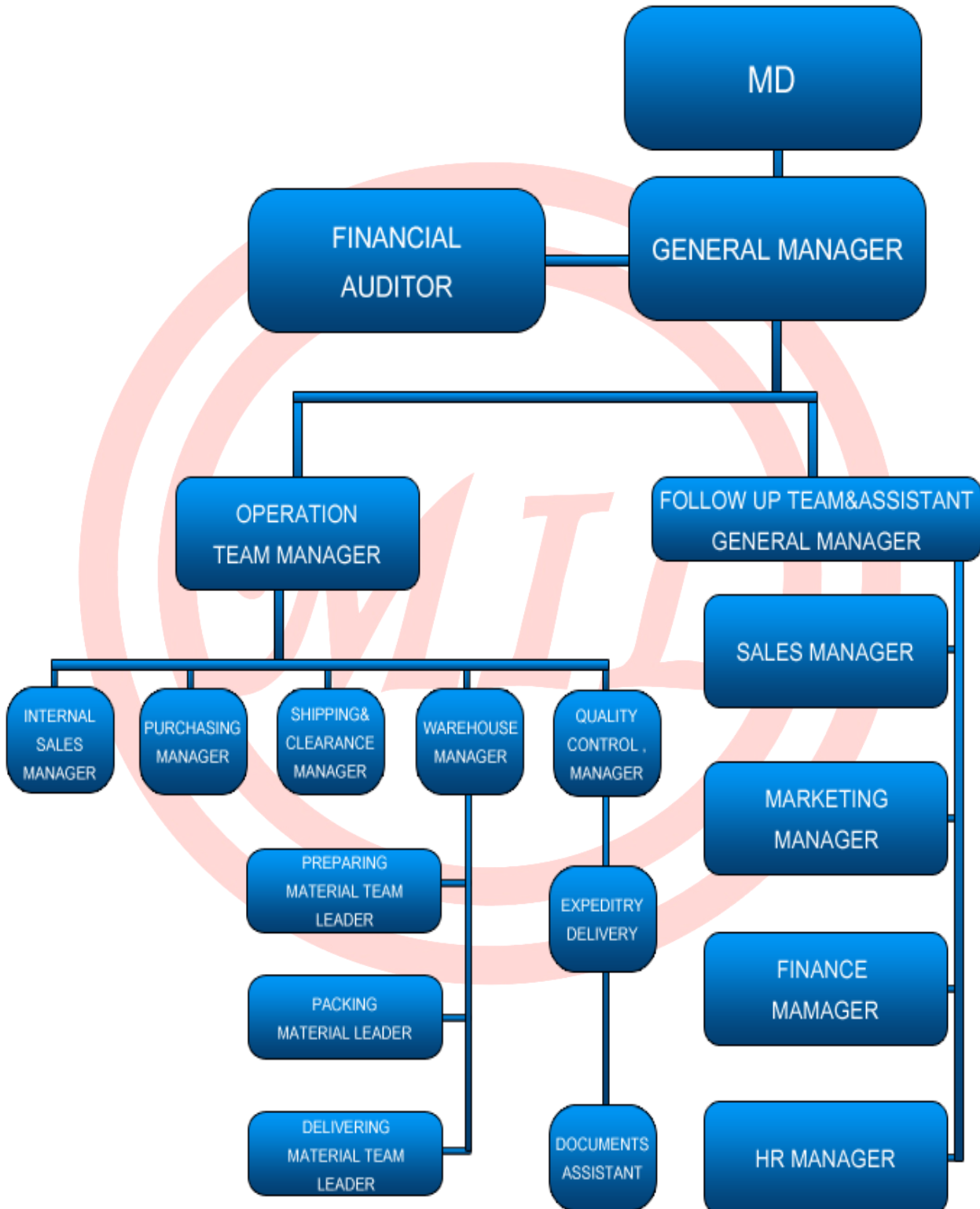
We take care of everything so our clients can remain focused on their business.

We understand the system and put it to work to the advantage of our clients.

We are an insider in the pipe and tube manufacturing industry and therefore are in a position that allows our clients to have an insider working for them.



Organization Chart





ISO 9001 Certificate



CERTIFICATE OF APPROVAL

This is to certify that the Quality Management System of:

**Metals International Limited
Shanghai
People's Republic Of China**

has been approved by Lloyd's Register Quality Assurance
to the following Quality Management System Standards:

**BS EN ISO 9001:2000
EN ISO 9001:2000
ISO 9001:2000**

The Quality Management System is applicable to:

**Supply and fabrication of; pipes & tubes, valves &
actuators including related services, instrumentation &
control systems, fittings & flanges, gaskets & bolts, and
the provision of pipe finishing operations.**

Approval
Certificate No: MEA1105207/A

Original Approval: 1 April 2002

Current Certificate: 12 August 2010

Certificate Expiry: 30 June 2013

Issued by: Lloyd's Register Quality Assurance Limited



001

This document is subject to the provision on the reverse
71 Fenchurch Street, London EC3M 4BS United Kingdom. Registration number 1879370
This approval is carried out in accordance with the LRQA assessment and certification procedures and monitored by LRQA.
The use of the UKAS Accreditation Mark indicates Accreditation in respect of those activities covered by the Accreditation Certificate Number 001
Macro Revision 13



This is to certify that

Angbai Trading A Subsidiary of Metals International Limited

is a Corporate Member of the

Australian Pipeline Industry Association Ltd.

and is entitled to the rights and privileges of membership
subject to the Constitution of the Association

PRESIDENT

SECRETARY

Certificate Number
Date of Admission

2143
14 October 2012



**Deep Foundations Institute
Corporate Member:**

METALS INTERNATIONAL LIMITED

Member Since 2012

*Dedicated to Quality and Economy in the Design and
Construction of Deep Foundations and Excavations*



PDCA

PILE DRIVING CONTRACTORS ASSOCIATION

This Certifies that

Angbai Trading Co., LTD

In acceptance of the Vision and Mission of the PDCA
and
Demonstrating the highest levels of professionalism
and
Having been duly recognized by the Board of Directors
In accordance with the By-Laws of the Association
Is hereby granted the status of
Member in Good Standing

A DRIVEN PILE IS A TESTED PILE!



METALS INTERNATIONAL LIMITED

Carbon Steel Pipe



ERW



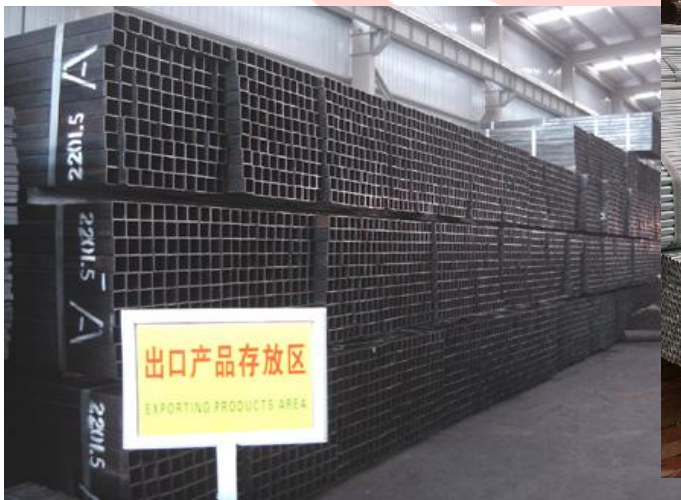
DSAW/LSAW



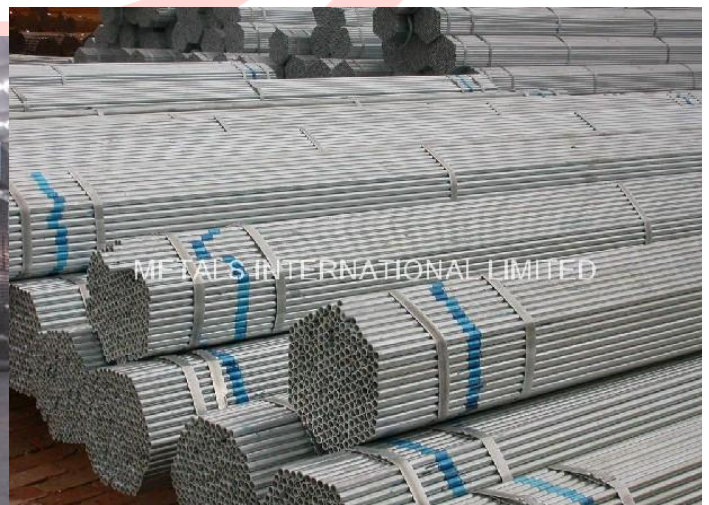
SSAW/HSAW



NESTING



HSS



G.I. PIPE



METALS INTERNATIONAL LIMITED

Type	Process	O.D.	Specification /Grade
Line Pipe	ERW	50.8-660.4mm (2"-26")	API 5L PS1/2-L175/A25,L210/A,L245/B,L290/X42,L310/X46,L360/X52, L390/X56, L420/X60,L450/X65, L485/X70,L555/X80 ISO 3183-1/2- GB/T 9711.1/2-L245/B,L290/X42,L310/X46,L360/X52, 390/X56, L420/X60, L450/X65, L485/X70 ISO 3183-3/GB/T9711.3- - Non-Sour Service -L245NC, L290NC, L360NC, L290QC, L360QC, L415QC,L450QC ,L485QC,L555QC,L290MC,L360MC, L415MC, L450MC,L485MC,L555MC. - Sour Service-L245NCS,L290NCS,L360NCS,L290QCS,L360QCS, L415QCS, L450QCS,L290MCS,L360MCS,L415MCS,L450MCS, L485MCS. DNV OS-F101-245,290,360,415,450,485,555 CAN/CSA Z245.1-02-241,290,359,386,414,448,486,550,620,690 AWWA C200-ASTM A570 Gr.30,33,36,40,45,50,55/ASTM A283 Gr.C/D. AS /NZS 1163-C250/L0,C350/L0,C450/L0,C500/L0, C600/L0 IPS-M-PI-190(1)/(2)-L175/A25,L210/A,L245/B,L290/X42,L310/X46,L360/X 52, L390/X56, L420/X60,L450/X65, L485/X70,L555/X80 IS1979-YSt172,YSt207,YSt241,YSt290,YSt317,YSt359,YSt414,YSt448,YSt4 83,YSt552
	DSAW/LS AW (UOE/JC OE)	406.4-1422mm (16"-56")	
	Spiral Welded	219.1-2032mm (8-5/8"-80")	
Pressure Pipe	EFW	406.4-1422mm (16"-56")	ASTM A671-Class 10,11,12,13,20,21,22,23,30,31,32,33,40,41,42,43, 50,51,52,53,60,61,62,65,70,71,72,73 ASTM A672- Class 10,11,12,13,20,21,22,23,30,31,32,33,40,41,42,43, 50,51,52,53
Structur al & Mechan ical Pipe	ERW	21.3-660.4mm (1/2"-26")	ASTM A53 A/ASTM A134/ASTM A135/ASTM A139/ASTMA214 ASTM A252/ASTM A500/ASTM A513/ASTM A519 ASTM A 587/ASTM A671/ASTM A 672/ASTM A795 AS 1074/AS 1163/AS 1579/AS2556/ BS EN 10296/BS EN 10217/BS EN10219 DIN 1626/DIN 1628/DIN 17172 JIS G3452/JIS G3445/JIS G3472 GOST 10704 API 2B UL 795,UL 797,UL 1242
	DSAW/LS AW (UOE/JC OE)	406.4-1422mm (16"-56")	
	Spiral Welded	219.1-3600mm (8-5/8"-140")	
Casing Pipe	ERW	50.8-508mm (2"-20")	API 5CT J55
Hollow Section	Square Pipe	10x10-500x500 mm	ASTM A500/ASTM A513/AS 1163 /JIS 3466//JIS G3452/EN 10219/EN 10025/EN 10210/EN 10305// DIN2395/DIN 17100/DIN 59410/DIN 59411
	Rectangul ar	20x10-600x400 mm	
Black/G. I. Pipe	ERW	15-219mm (1/2"-8")	BS 1387/DIN 2440/2444/EN 10219/AS 1074/ ASTM A 53/UL 795/ASTM 797/UL 6/ASTM A135/EN39



Coated Pipe

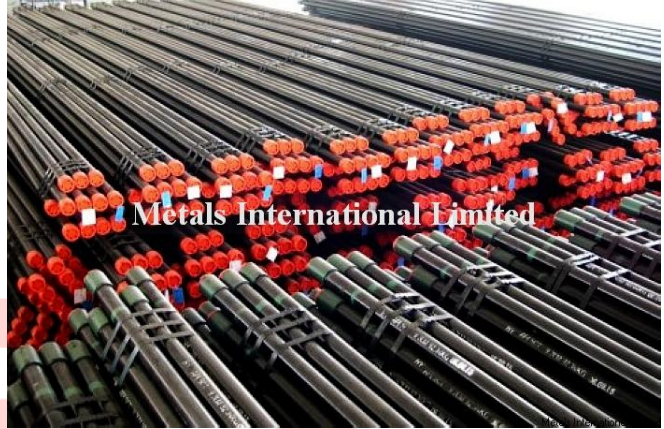


External Coating	Epoxy	CSA-Z245. 20, AWWA C210,AWWA C-213,NFA 49-709, AS 3862,EN 10289,IS2006/,GB3/CW6
	Polyethylene	CSA-Z245. 21, DIN 30670,NFA 49-710,ISO 21809-1,IPS-G-TP-335,IGS-TP-010-2, DNV-RP-F106
	Polypropylene	DIN 30678,NFA 49-711, ISO21809-1,DNV-RP-F106
	Bitumen	DIN 30673,BS 534,BS4147,AWWA C203,TS4536
	Coal-tar Enamel	BS4164, ANSI/AWWA C203,ISO 5256,SY/T0379
Lining Coating	Epoxy	AWWA C210,AWWA C-213,NFA 49709,TS EN 10289,
	Bitumen	DIN 30673,AWW C203
	Cement Mortar	AWWA C-205, BS 534
Concrete Weighted Coating	CWC	NAPCA Bulletin 18-99,DNV OS-F-101





OCTG



Type	Process	O.D.	Specification/Grade
Casing Pipe	BTC,LTC,STC,H CS,SuperMax	114.3-508.0mm (4"-20")	API 5CT J55,K55,N80,L80,Q95,P110,Q125
Oil Tubing	BTC,LTC,STC,H CS,SuperMax	60.3-139.7mm (2 3/8"-5 1/2")	API 5CT J55,K55,N80,L80,Q95,P110,Q125
Drilling Rods	EU/IU		
Integral Heavy Weight Drill Rods	EU/IU	114.3-168.3mm (4 1/2-6 5/8")	API 5D E75,X95,G105,S135
Drilling Collar	AISI 4145 modified chromium- molybdenum alloy	79.14-279.4mm (3 1/8-11")	API 7 NC23-31 ,NC26-35, NC31-41, NC35-47, NC38-50, NC44-60, NC44-60, NC44-62,
Non-magnetic Drill Collars	low carbon stainless	79.14-279.4mm (3 1/8-11")	NC46-62, ,NC46-65, NC46-65, NC46-67, NC50-67, NC50-70, NC50-70, NC50-72 NC50-72, NC56-77,
Spiral Drill Collars	4145H modified chromium -molybdenum alloy	98.4-279.4mm (3 7/8-11")	NC56-80, 6 5/8REG, NC61-90, 7 5/8REG, NC70-97, NC70-100, 8 5/8REG
Square Kelly	AISI 4145H	60.3-114.3mm (2 1/2-4 1/2")	API 7 6 5/8 REG 4 1/2 REG





Boiler Tube



Low-Medium-High Pressure Tube



Alloy Tube



Heat Exchanger Tube



Condenser Tube

Type	O.D.	Specification	Grade
Alloy Pipe	φ 16-1473×2-100mm	ASTM A199	A,B,C
		ASTM A213/A213M ASME SA213/SA213M	T11/T12/T22/T23/T5/T9/T91/T92
		ASTM A209	T1/T1a/T1b
		ASTM A335/A335M	P11/P12/P22/P5/P9/P91
		DIN 17175	P22(10CrMo910)
		JIS G3467	T91/P91/P9/T9
Boiler, Superheat er and Heat Exchange r Tube	φ 10-168.3×1.2-25mm	ASTM A179/SA 179/M	-
		ASTM A192/SA192/M	-
		ASTM A209/SA209/M	T1,T1a,T1b
		ASTM A210/M	A1,C
		ASTM A213/A213M ASME SA213/SA213M	T2/T11/T12/T22/T23/T5/T9/T91/T92
		DIN 17175	ST35.8,ST45.8,17Mn4,15Mo3,13CrMo44
		BS 3059-2	320/360/440/243,620-440,622-490,S1,S2,T C1,TC2
		JIS G3461	STB 340,STB 410,STB 510/STB A12/STB A22
EN 10216-1	P195TR1/TR2,P235TR1/TR2,P265 TR1/TR2,		



METALS INTERNATIONAL LIMITED

		EN 10216-2	195GH,P235GH,P265GH,10CrMo5-5, 13CrMo 4-5, 11CrMo9-10,X11CrMo5+1, TC1,TC2
Flowline Tube	φ 6-1219.2×1.5-40mm	ASTM A106	B/C
		ASTM A53	A/B
		BS 3059-1	320
Structural & Automobi le Tube	φ 6-610×1.5-40mm	ASTM A513	1010/1020/1025/1026/1035/1045
		ASTM A519	
		ASTM A822	
		JIS G3454	STP G370/STP G410/STK490/500
		DIN 2391/2393	St 37/St44/St52
		BS 36243-4	CFS,CFS3A,CFS4-11
		JIS G3445	STKM 11A,STKM 13C,STKM 14B,SCM 415TK,SCM 430TK,SCM 440TK
EN 10305-1	E215,E235,E355		



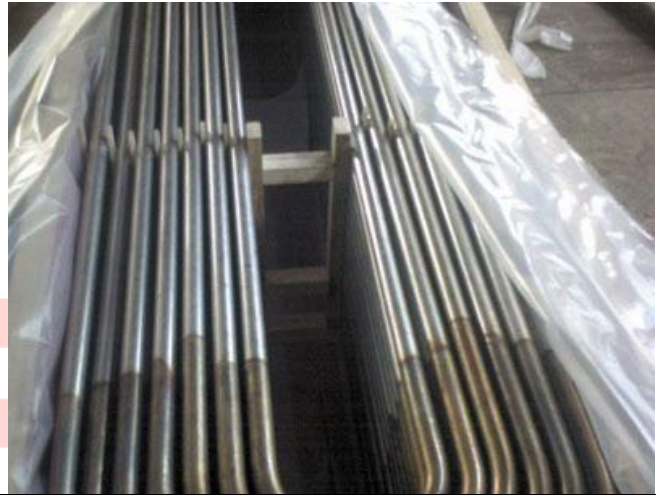
Fin Tube



U-TUBE



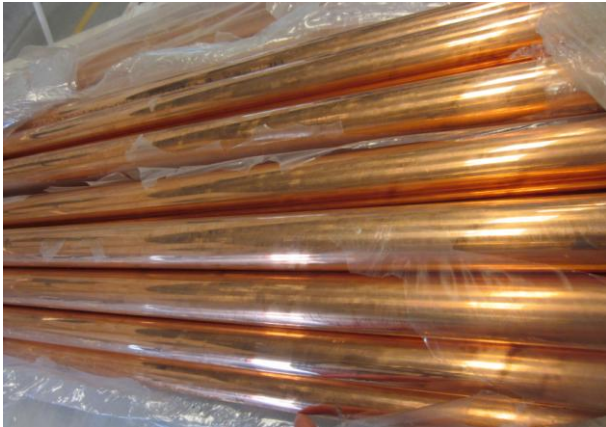
Stainless Steel Pipe



Type	O.D.	Specification	Grade
Seamless Pipe	6-1200mm	ASTM A213/A213M, ASTM A312/A312M, EN 10216-5, DIN 17458, DIN 17456	TP304/TP304L/TP304H/TP309/TP309S/TP310/ TP310S/TP316H/TP316/TP316L/TP316Ti/TP317/ TP321/TP321H/TP347/TP347H/904L TP405/TP409/TP410/TP420/TP430/TP443/TP446
Welded Pipe	10-2800mm	ASTM A249/A249M, ASTM A269/A269M, ASTM A270/A270M, ASTM A312/A312M, ASTM A358/A358M, EN 10296-2, EN 10217-7,	1.4301/1.4307/1.4948/1.4833/1.4841/1.4335/ 1.4845/1.4401/1.4404/1.4571/1.4438/1.4541/ 1.4878/1.4550/1.4539 1.4002/1.4006/1.4021/1.4016/1.4749 SUPER304H(S30432)/TP347HFG/HR3C
Evaporator Tubes	6-508mm	ASTM B163/B167, ASTM B423, ASTM B704/705, ASTM B575	Monel 400/Inconel 600/601/625 Incoloy 800/800H/800HT/825 Hastelloy C-276/C-22/C-4/B-2/B
Duplex Stainless Steel Pipe	6-1219.2mm	ASTM A789/A789M, ASTM A790/A790M	S31803/S32205/S32750/S32760 1.4462/1.4410/1.4501
Heat Exchange Tube including U Pipe	5-22.4mm	ASTMA249/A249M, ASTMA688/A688M	TP304/TP304L/TP304H/TP310S/TP316/TP316L/ TP316Ti/TP317/ TP321/TP321H/TP347/TP347H
Coil Pipe	6-25.4mm	ASTM A269/A269M	TP304/TP304L/TP316/TP316L/TP317/ TP321
Square/Rectangular Pipe	10x10-60x60mm/10x20-40x60mm	ASTM A554/DIN 2463/ JIS G3468	201/202/304/304L/316/316L/317/321 1.4372/1.4373/1.4301/1.4307/1.4401/1.4404/ 1.4438/1.4541
Mechanical Tubing	6-323.9mm	ASTM A511/A511M/ASTM A554/EN10296-5	MT304/MT304L/MT309S/MT310S/MT316/ MT316L/MT317/MT321/MT347 MT405/MT410/MT430/MT443/MT446 1.4301/1.4307/1.4948/1.4833/1.4845/1.4401/ 1.4404/1.4438/1.4541/1.4878/ 1.4550/1.4539 1.4002/1.4006/1.4021/1.4016/1.4749
CRA Line Pipe	25.4-1066.6 mm (1"-42")	API 5LC SY/T 6601	LC30-1812/LC52-1200/LC65-2205/LC65-2506/LC 30-2242
CRA Clad or Lined Steel Pipe	25.4-1066.6 mm (1"-42")	API 5LD SY/T6623	X42, X46, X52, X56, X60, X65, X70,X80 LC1812/LC2205/2506/LC2242/LC2262



Copper Tube



Type	Usage	Size		Alloy Number	Specification
		O.D. (mm)	W.T. (mm)		
Copper Tube	ACR	6-105	0.4-8	C12200/C1220/ CU-DHP/TP2	ASTM B280/ASTM B640/ EN 12735/JIS 3300/AS/NZS 1571
	Water Tube	9-300	0.4-60	C12200/CU-DHP/ CW024A/K/L/M/T P2	ASTM B88/ANSI/NSF61/ ASTM B698/ASTM B467/ EN 1057/JIS 3300/NZS 3501/AS 1572/AS1432
	ACR, GAS Pipe	9-76	0.4-8	C10200/C12000/ C12200	ASTM B68/ASTM B837/ EN 1057/JIS 3300/NZS 3501/AS1572/AS 1432
	Condenser & Heat Exchanger	6-108	0.4-8	C12200/TP2	ASTM B75/ASTM B359/ ASTM B543/ASTM 891/ EN 12451/JIS 3300/ AS 2378/AS 1569
	Electrical Tube	9-76	0.4-8	C10100/C10200/ C10300/C12000/T2	ASTM B75/ASTM B447/ EN 13600
	Medical & Vacuum	9-300	0.4-60	C12200/TP2	ASTM B819/ EN 13348/EN 1057/BS 2871
Copper Fittings	ACR/Pipe/Gasli ne Pipe fittings	6-108	0.4-8	C12200/TP2	ASME B16.22/ EN 1254/JIS H3401/BS 864-2
Brass Tube	Admiralty Brass Tube	4-100	0.4-12	C44300/ CuZn28Sn1/ HSn70-1	ASME SB75/ASTM B111/M /ASME SB111/M EN 12451/JIS 3300
	Common Brass Tube	4-100	0.4-12	C27200/C27400	ASTM B135/ EN 12451/JIS 3300
	Aluminum Bras s Tube	4-100	0.4-12	C68700/C6870/ CZ110/HA177-2	ASME SB111/ASTM B359/BS2871 EN 12451/JIS 3300
Copper-Nickel Tube	90/10 Cu-Ni Tube	4-100	0.4-12	C70600/C7060/ CN102	ASTMB111/ ASTMB346/ASTMB466/ EN 12451/JIS 3300/AS 1569/BS 2871/BS359/DIN 17671/DIN 17664/ADW 6/2 WD TUV 420/5
	70/30 Cu-Ni Tube	4-100	0.4-12	C71500/C7150/ CN107/C26000	ASTM B111/ ASTM B346/ASTM B466/ EN 12451/JIS 3300/BS2871



Ductile Iron Pipe

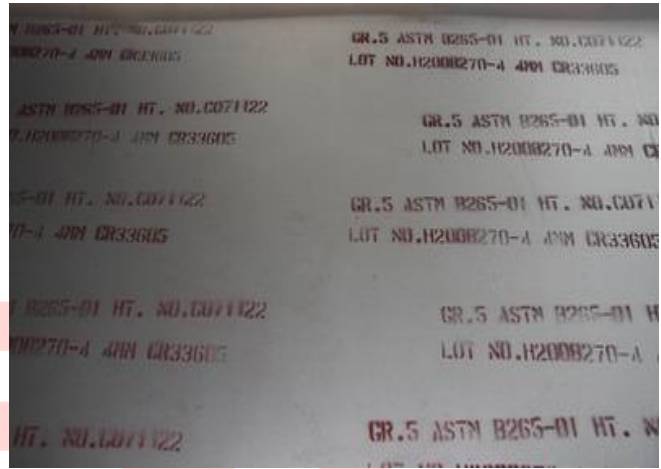
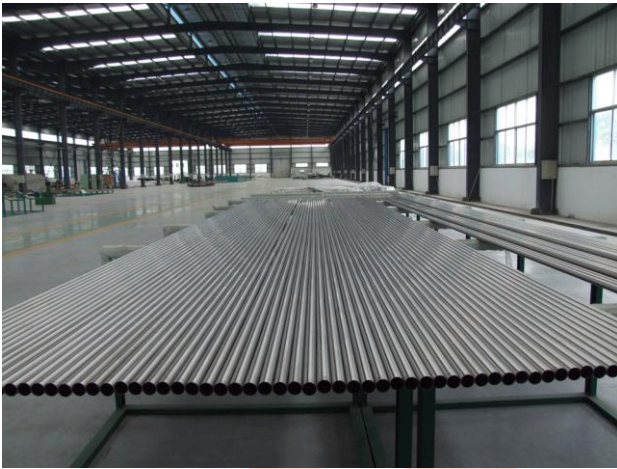


Pressure Class	Size	Specification/Grade
150	Φ762-1626mm(30-64")	ANSI/AWWA C104/A21.4/ANSI/AWWA C105/A21.5
200	φ610-1626mm(24-64")	ANSI/AWWA C110/A21.10/ANSI/AWWA C111/A21.11
250	φ356-1626mm(14-64")	ANSI/AWWA C115/A21.15/ANSI/AWWA C116/A21.16
300	φ356-1626mm(14-64")	ANSI/AWWA C150/A21.50/ANSI/AWWA C151/A21.51
350	Φ88.9-1626mm(3-64")	ANSI/AWWA C153/A21.53
		ANSI/AWWA C600
		ASTM A674/ASTM A716/ASTM A746
T-Type Joint	Φ118-1668mm(4-64")	ISO2531,EN 548,EN598,AS 2280 K9,K10,K12
K Type joint	Φ118-2702mm(4-106")	ISO2531,EN 548,EN598,AS 2280,ISO4633 K9,K10,K12





Titanium Tube



Description	Size	Specification	Grade
Seamless Titanium and Titanium Alloy Pipes	φ 5~168mm	GB/T3624	TA1, TA2, TA9, TA10, TA18
Titanium and Titanium Alloy tubes for condensers and Heat Exchangers	φ 5~76mm	GB/T3625	TA1, TA2, TA9, TA10, TA18
Titanium and Titanium Alloy tubes for condensers and Heat Exchangers	φ 5~76mm	ASTM B338 ASME SB338	Gr.1, Gr.2, Gr.7, Gr.9, Gr.12, Gr.16
Seamless and Welded Titanium and Titanium Alloy Pipes	φ 5~168mm	ASTM B337 ASME SB337	Gr.1, Gr.2, Gr.7, Gr.9, Gr.12, Gr.16
Seamless Titanium and Titanium Alloy Pipes	φ 5~168mm	ASTM B861 ASME SB861	Gr.1, Gr.2, Gr.7, Gr.9, Gr.12, Gr.16
Seamless Circular Titanium and Titanium Alloy Tubes	φ 5~76mm	DIN 17861	3.7025, 3.7035, 3.7235, 3.7195, 3.7105

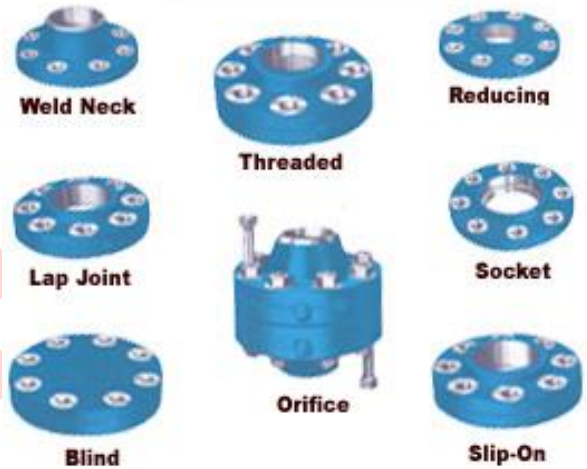




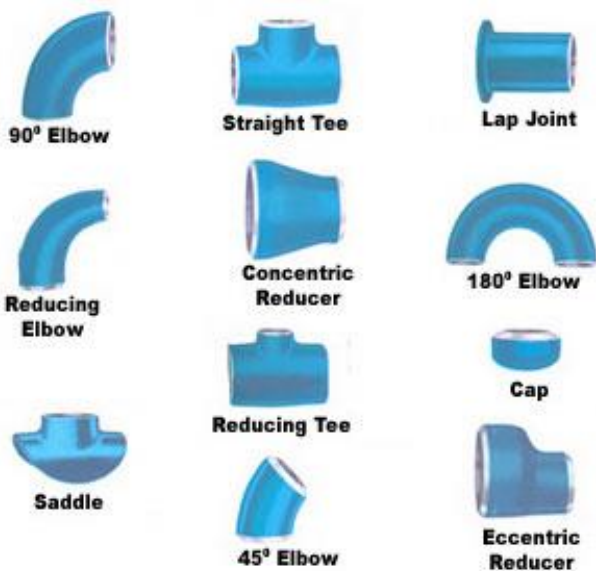
Pipe Fittings



Induction Bends



FLANGES



Pipe Fittings



VALVES

(1) Forged fitting & Self reinforced outlets

Elbows, tees, crosses, couplings, half couplings, plugs, caps, bushings, unions, reducing inserts, hexagonal, straight and swage nipples with socket weld or threaded ends, butt weld outlets, socket outlets, threaded outlets, elbow, nipple and lateral outlets according to ASTM, ASME, UNI, DIN, ANSI, MSS SP standards.

Material used: carbon steel, alloy steel, austenitic and austenitic-ferritic steels, titanium.

Main material codes and main dimensional standards applied: ASTM A 105, A 181, A 182, A 350, A 694.

Steel grades: F5, F9, F11, F22, F304, F304L, F316, F316L, F321, F44, F51, F42, F52, F60, F65, UNS N08800, UNS N08825, UNS N08925, UNS C70600.



METALS INTERNATIONAL LIMITED

Dimensions according to ANSI B16.11, BS3799. For self reinforced outlets design calculations are carried out according to ANSI/ASME B31.1 or other Client specifications

Compression fittings

Unions: reducing union, bulkhead union, union elbow, union tee, union cross, male connector, male thermocouple connector, male elbow, male run tee, male branch tee, female connector, gauge connector, female bulkhead connector, female elbow, female run tee, female branch tee, male adaptor, female adaptor, tube end reducer, tube end bulkhead adaptor, eye banjo couplings, non return valves, shut-off valves, ball valves, control needle valves, fittings for plastic hose for process control and instrumentation.

Material used: carbon steel, stainless steel, brass.

Main material and dimensional standard applied: ASTM A105, A479, TP316, A182 F316, B16 alloy 360, B453 alloy 345, B124 alloy 377.

Dimensions acc. manufacturer standard, API 6H, BS 4368 part 3; thread according ANSI B1.20.1, BS 3643, ISO 261, ISO 262.

(2) Butt weld fittings

Seamless: Elbows and bends, short and long radius, bends (made by cold forming, hot forming in dies or by hot induction method), tees, caps and reducers up to 36" diameter according to ASTM, ASME, MSS SP 75, UNI, DIN, ANSI Standards.

Welded: Elbows and bends, short and long radius, tees and reducers up to 72 inch diameter, bends (made by hot induction method up to 48 inch diameter). Larger diameters can be produced in mitered execution.

Type of materials supplied: carbon steel, alloy steel, austenitic steel, ferritic-austenitic steel, titanium, copper, monel, inconel, hastelloy, incoloy.

Main material codes and main dimensional standards applied:
ASTM A 234, A 403, A 420, A 815, B 363, B 366.

Steel grades: WPB, WPL6, WP11, WP12, WP22, WP 304, 304L, WP316, 316L, WP 321, UNS S31803, UNS S31550, UNS S32750, UNS S32760, UNS S31254, UNS N06600, UNS N08800, UNS N08825, UNS N08925.

MSS SP 75 WPHY 42, 52, 56, 60, 65.

Dimensions acc. ANSI B16.9, ANSIB16.28, MSS SP 43, MSS SP 75.

Others: Lateral, saddles, sphere, tee, split tee and pigging tees designed according to customer requirements.

(3) Flanges

Welding neck, slip-on welding, screwed, lapped, socket welding, blind, reducing, orifice, anchor, compact and swivel ring type up to 78" according to ASTM, ASME, API, BS, UNI, DIN, ANSI, MSS SP 44, AWWA, TEMA.

Material used: carbon steel, alloy steel, austenitic and austenitic-ferritic steels, titanium.

Main material and dimensional standards applied: ASTM A105, A181, A182, A350, A694, B381.

Steel Grades: F5, F9, F11, F22, F304, F304L, F316, F316L, F321, F44, F51, F42, F52, F60, F65, UNS N08800, UNS N08825, UNS N08925, UNS C70600, F2.



METALS INTERNATIONAL LIMITED

Dimensions acc. to ANSI B16.25, ANSI B16.36, ANSI B16.1, API 605, API 6A, MSS SP 44, BS 3293, AWWA C207-55, ASME B16.47.

Others : long welding neck, buttered flanges, weld overlaid flanges, spectacle blinds, blind and spacers, drip rings, stub ends, orifice plates, tube sheets, girth flanges, pieces according to client drawings or different international standards.etc. according to client drawings or different international standards.

(4) Valves

Globe, solid wedge gate, ball, butterfly, swing check, plug valves, manually or gear operated; with or without actuators and control panels.

Valves can be supplied in carbon steel, alloy steel, stainless steel and other alloys.

The main codes applied are ANSI B16.5 or ASME B16.47 for flanged ends ANSI B16.34, API 600, API 6D, BS 5351





Fasteners

" A ONE STOP SHOP FOR FASTENERS "



Specification	Size	Class
ASTM A193/A193M	3/8"-3 1/2"/M12-M80	B7, B7M B16, B8, B8M
ASTM A194/A194M	3/8"-4"/M8-M100	2H, 2HM, 4, 4L, 7, 7L, 7, 7M, 8, 8M,
ASTM A307	1/2" 2 1/2"	A; B; C
ASTM A320	1/2"~1 1/2"	L7, L7M
ASTMA325 A490	1/2"~1 1/2"	A325; A490
ASTMA325M A490M	M16~M36	8S; 10S
ASTM A453 660A	M16~M36	
ASTM A563	1/2"~1 1/2"	A; C; DH
ASTM A563M	M16~M36	8S; 10S
ASTM A574	M16~M36	
ASTM F436	M16~M36	
ASTM F1852	1/2"~1 1/8"	A325
DIN6914~6916	M16~M30	10.9
DIN931,933,DIN 934,DIN 936	M10-M100	8,10,12
ISO7412;4775; 7416	M10-M100	8.8; 10.9
ISO4014; 4017	M10-M100	8.8
JIS B 1186	M10-M100	F8T; F10T;F11T
JSS II 09	M10-M100	S10T
BS4395	M10-M100	8.8; 10.9
AS1252	M10-M100	8.8
UNI 5587,5588	M10-M100	
UNI 5931	M10-M100	
UNI 5737	M10-M100	
SAE J995	3/8"-1 1/2"	2,5,8,10,A563-A,A563-C,A563-DH



Plate/Coils



HRC/CRC



Hot-Rolled Steel Plate

Specification	No.	Grade
API	ASTM 5L	B,X42,X46,X52,X56,X60,X65,X70,X80
ISO	ISO 3183-1,2,3	E17,E21,E24-1,E24-2
EN	EN 10208	L245,L295,L315,L355,L385,L455,L485,L555

Structural Steel Plate

Specification	No.	Grade
ASTM	ASTM A36	A36
	ASTM A283	Grade: A, B, C, D
	ASTM A572	Grade: 42, 50, 55, 60, 65
	ASTM A573	Grade: 58, 65, 70
	ASTM A633	Grade: A, C, D, E
	ASTM A678	Grade: A, B, C, D
	ASTM A709	Grade: 36, 50, 50W, 100, 100W
	ASTM A710	Grade A: Class1, Class2, Class3; Grade B: Class1, Class2, Class3
API	API 2W/2H	Grade: 42, 50, 50T, 60
JIS	JIS G3101	SS330, SS400, SS490, SS540
	JIS G3106	SM400 (A/B/C), SM490 (A/B/C), SM490 (YA/YB), SM520 (B/C), SM570
	JIS G3128	SHY685, SHY685N, SHY685NS
	JIS G3136	SN400 (A/B/C), SN490(B/C)
EN	EN 10025	S185, S235 (JR/JRG1/JRG2/J0/J2G3/J2G4), S275 (JR/J0/J2G3/J2G4), S355(JR/J0/J2G3/J2G4/K2G3/K2G4), E295, E335, E360
		EN 10137-2
GB	GB/T 700	Q195, Q215(A/B), Q235(A/B/C/D), Q255(A/B), Q275
	GB/T 711	08, 08F, 08Al, 10, 10F, 15, 15F, 20, 20F, 25, 30, 35, 40, 45, 50, 55, 60, 65, 70, 20Mn, 25Mn, 30Mn, 40Mn, 50Mn, 60Mn, 65Mn
	GB/T 714	Q235q, Q345q, Q370q, Q420q



METALS INTERNATIONAL LIMITED

GB/T 1591	Q295(A/B), Q345(A/B/C/D/E), Q390(A/B/C/D/E), Q420(A/B/C/D/E), Q460(C/D/E)
-----------	---

Boiler & Pressure Vessel Steel Plate

Specification	No.	Grade
ASTM	ASTM A202	Grade: A, B
	ASTM A299	Grade: A, B
	ASTM A302	Grade: A, B, C, D
	ASTM A387	Grade: 2, 12, 11, 22, 22L, 21, 21L, 5, 9, 91, 91L
	ASTM A515	G, Grade: 65, 70
	ASTM A516	Grade: 55, 60, 65, 70
	ASTM A537	Class: 1, 2, 3
	ASTM A662	Grade: A, B, C
JIS	JIS G3103	SB410, SB450, SB480, SB450M, SB480M
	JIS G3115	SPV235, SPV315, SPV355, SPV410, SPV450, SPV490
	JIS G3118	SGV410, SGV450, SGV480
	JIS G3119	SBV1A, SBV1B, SBV2, SBV3
	JIS G3120	SQV1A, SQV1B, SQV2A, SQV2B, SQV3A, SQV3B
	JIS G3126	SLA235(A/B), SLA325(A/B), SLA365, SLA410
	JIS G3127	SL2N255, SL3N255, SL3N275, SL3N440, SL5N590, SL9N520, SL9N590
	JIS G4109	SCMV(1-1, 1-2, 2-1, 2-2, 3-1, 3-2, 4-1, 4-2, 5-1, 5-2, 6-1, 6-2)
EN	EN 10028	P235GH, P265GH, P295GH, P355GH, 16Mo3, 13CrMo4-5,
		10CrMo9-10, 11CrMo9-10
GB	GB/T 713	20g, 22Mng, 15CrMog, 16Mng, 19Mng, 13MnNiCrMoNbg,
		12Cr1MoVg
	GB/T 3531	12MnDR, 15MnNiDR, 09MnNiDR
	GB/T 6654	20R, 16MnR, 15MnVR, 15MnVNR, 18MnMoPbR,
13MnNiMoPbR, 15CrMoR		

Anti-Corrosion Steel Plate

Specification	No.	Grade
ASTM	ASTM A242	Type 1
	ASTM A588	Grade: A, B, C, K
	ASTM A709	Grade: 36[250], 50[345],
		50W[345W](TypeA / TypeB / TypeC), HPS 50W[345W],
		HPS 70W[485W], 100[690](Type A/B/C/E/F/H/J/M/P/Q),
100W[690W] (Type A/B/C/E/F/H/J/M/P/Q)		
ASTM A871	Grade: 60 (Type I / II / III / IV), 65 (Type I / II / III / IV)	
JIS	JIS G3114	SMA400 (AW/BW/CW/AP/BP/CP),



METALS INTERNATIONAL LIMITED

		SMA490 (AW/BW/CW/AP/BP/CP), SMA570(W/P)
	JIS G3125	SPA-H

Engineering Mechanical Steel Plate

Specification	No.	Grade
JIS	JIS G4051	S10C, S12C, S15C, S17C, S20C, S22C, S25C, S28C,
		S30C, S33C, S35C, S38C, S40C, S43C, S45C, S48C, S50C,
		S53C, S55C, S58C

Offshore Structures Steel Plate

Specification	No.	Grade
API	API 2H	42,50
API	API 2W	42,50,50T,60
API	API 2Y	42,50,50T,60
EN	EN 10225	S355G2+N,S355G5+M≤20mm S355G3+N,S355G5+M≤40mm S355G7+N,S355G8+N,S335G9+N,S355G10+N≤150mm S355G7+M,S355G8+M,S335G9+M,S355G10+M≤100mm S420G1+Q,S420G1+M,S420G2+Q,S420G2+M≤100mm S460G1+Q,S460G1+M,S460G2+Q,S460G2+M≤100mm

Hull Structural Steel Plates

Specification	Low and Medium Strength	High Strength
CCS	A,B,D,E,	CCS-A32,CCS-A36
DNV	NVA,NVB,NVD,NVE	NV A32,NV A36
GL	GL-A,GL-B,GL-D,GL-E	GL-A32,GL-A36
ABS	AB/A,AB/B,AB/D,AB/E	AB/AH32,AB/AH36
LR	A,B,D,E	AH32,AH36
BV	A,B,D,E	AH32,AH36
RINA	A,B,D,E	AH32,AH36

Galvanized Steel Sheet

Specification	No.	Grade
ASTM A653/M	Zinc-Coated(Galvanized), or Zinc-Iron Alloy Coated(Galvannealed) by the Hot-Dip Process	Zinc, Zinc-Iron Alloy
ASTM A792/M	55% Aluminum-Zinc Alloy Coated by the Hot-Dip Process	230,255,275,340 Class 1/2/3,550 CS Type A/B/C, FS, DS, HTS
JIS G3321	55% Aluminum-Zinc Alloy Coated by the Hot-Dip Process	SGLHC,SGLCC,SGLCD,SGLH400,SGLC400,SGLH440,SGLC440,SGLH490,SGLCC490,SGLH540,SGLC570 AZ90/AZ120/AZ150/AZ170



Reference List

No.	Pipe Type	Specification	Grade	Size	W/T	Qty	TPI	Destination	Delivery Time
1	HSAW/SSAW	API-5L	B	52/72"	18/20mm	1500MT		Oman	2005
2	ERW	API-5L	X42	10"	9.53mm	528,000 feet	CCSI	Myanmar	2005
3	ERW	API-5L	X46	20"	10.31/14.30m	631,055.43 feet	CCSI	Myanmar	2005-2006
4	SHS/RHS	DIN 10219	S 355	100x100-400x400	8-16mm	2500MT		Singapore	2006
5	SHS/RHS	DIN 10219	S 355	100x100-400x400	8-16mm	3500MT		Australia/	2006
6	ERW	API-5L	B/X42	4"-24"	5.8-17.5	23000MT		USA	2006
7	ERW	API-5L	B/X42/X52	4"-24"	3.5-17.5	8000MT		Australia	2006
8	ERW	API-5L	B/X42	4"-24"	5.8-17.5	12000MT		USA	2007
9	ERW	API-5L	B/X42/X52	4"-24"	3.5-17.5	5000MT		Australia/ NZ	2007
10	SHS/RHS	ASTM A252/AS1579	S 355	100x100-400x400	8-16mm	2500MT		Australia/ NZ	2007
11	SMLS	ASTM A106	B	1/2-12"	1.6-28mm	5600MT		Australia/ NZ	2007
12	ERW+3 P.E.	API-5L	X70	24"	7.92-15.88m	224,970.00 Meters	SGS	Madagascar	2007-2008
13	LSAW+3 P.E.	API-5L	X52	40/48"	22mm	114,781MT	SGS	Madagascar	2007-2008
14	Induction Bends	API-5L	X70	24"	7.92-17.27m	177MT	SGS	Madagascar	2007-2008
15	ERW	API-5L	B	1/2-24"	2.0-17.27mm	2800MT		Columbia	2007
16	ERW/HSAW	API 5L	B	20"/24"	9.53/12.7mm	542,472.00 meters	Moody	Algeria	2008-2009
17	ERW +BTC	API 5CT	J-55	20"	11.13mm	1400MT		Canada	2008
18	LSAW	API 5L	B	30"/36"	9.53mm	1600MT		USA	2008
19	LSAW	API 5L	X52	30"/36"	9.53/12.7mm	1200MT		Australia	2008
20	LSAW	ASTM A672	70	28"	9.53/12.7mm	2500MT	SGS	Madagascar	2008



METALS INTERNATIONAL LIMITED

21	ERW	API 5L	A/B	3/4"-24"	Sch. 40	1823MT		Saudi Arabia	2008
22	ERW+STC	API 5CT	H-40	20"	11.13mm	4000ft		Ecuador	2008
23	SSAW	API 5L	B	10"-48"	Sch.10/30/40	5200MT		Australia/ NZ	2008
24	SHS	EN10210	S355	300x300mm	12.7mm	650MT		UAE	2008
25	SMLS	ASTM	A210 A1/213 T22	38.1*4.191*13845		500MT	SGS	Thailand	2008
26	SMLS	ASTM	A106 B	508/610mm	9.52mm	400MT	BV	Australia	2008
27	SMLS	ASTM	A335 P11/P22/ASTM A106 C	219.1-610mm	8.18-26.19m m	760MT	SGS	Australia	2009
28	SMLS	ASTM	A106B/API 5LB	323.9-406.4	9.52mm	200MT	BV	Australia	2009
29	SMLS	ASTM	A106 C/API 5LB	610mm	50mm	658MT		Singapore	2009
30	SMLS	ASTM	213 T22	152.4mm	7.94mm	250MT		Singapore	2009
31	SMLS	ASTM/ASME/API 5L/NACE MR-0175	B/106B	1/2-24"	2.6-19.05mm	3258MT		Australia	2009
32	SMLS	JIS G3461 STB35S-C	B	21.3-141.3mm	2.8-6.6mm	528MT		Sri Lanka	2009
33	G.I. Tube	BS1387	Extra A	21.3-219.1mm	1.8-7.11mm	1980MT	BV	Guinea	2009
34	Shouldered G.I. Tube	BS1387/AS 1163	Extra A	60.3-165.1mm	2.0-2.75mm	785MT		Australia	2009
35	Steel Plate	ASTM A283	C	6096*1500mm	5-20mm	3750MT	SGS	Banglade sh	2009
36	Boiler Tube	ASTM SA213/SA268	T11/T22/TP410	38mm	2.6-5.0mm	1225MT	Moody	Austria	2009
37	ERW Line Pipe	API 5L/AS 1163	B/G350	73-610	2.37-12.7mm	1895MT		Australia	2009
38	Steel Plate	ASTM A283	C	12000*1500mm	24mm	2500MT		Iran	2009
39	Oil and Casing Pipe	API 5CT	J-55/N80	3 1/2-13 3/8"	9.3/61/68ppf	2630MT	SGS	PNG	2009
40	SMLS	API 5L /ASTM A106 /NACE M0175	B	1/2-10"	2.17-12.7	1150MT	Shell Approve d	Australia	2009
41	ERW	API 5L	B	18"	9.53	240MT		South Africa	2009
42	SMLS	API 5L /ASTM A106	B	1/2-10"	9.27-12.7mm	1025.65MT		USA	2009



METALS INTERNATIONAL LIMITED

42	SMLS	API 5L /ASTM A106 /NACE M0175	B	10"	9.27-28.58m m	2000.86MT		Australia	2009
43	ERW	API 5L	X52	8"-24"	4.8-6.4mm	2888.31MT		Australia	2009
44	ERW	API 5L	X52 PSL2	24"	15.9mm	1508.22MT	Velosi	PNG	2010
45	ERW	API 5L	X52 PSL2	16"	9.5mm	223.189	Velosi	PNG	2010
46	UOE DSAW	API 5L/AS 2885.1+AS 3862	X70 PSL2	1067mm	14.1-23.5mm	517,000m	ITI/TGR C	Australia	2010
47	SMLS	API 5L /ASTM A106 /NACE M0175	B	10"	9.27-28.58m m	6185.26MT		Australia	2010
49	ERW	API 5L/AS 1163	B/C350L0	2"-24"	4.8-12.7mm	8068.15MT		Australia	2010
50	SMLS	DIN 17175/ASTM A106	B	26.3-273.1mm	2.8-6.6mm	328MT		Sri Lanka	2010
51	ERW	API 5L	B	2"-24"	4.8-12.7mm	530MT		Vietnam	2010
52	OCTG	API 5CT	K55, Perforated, R3 BTC	7"	23ppf	43.052MT	SGS	Australia	2010
53	G.I.Pipe	AS1074	Roll Grooved/ Shouldered	114.3-165.1mm	3.05-5mm	635.234MT		Australia	2010
54	SMLS	JIS G3461	STB 410	38.0mm	4.9mm	22.398MT	Velosi	Australia	2010
55	Oxy Lance Tube	ASTM A106	B	13.7mm	2.24mm	23000PCS	Moody	Australia	2010
56	Copper Tubes & Fittings	ASTM B68/280		1/4-5/8"	0.76-0.89	1300PCS		Kuwait	2010
57	Copper Tubes	ASTM B88	L/K	1/2-3 1/8"	0.76-2.77mm	1460PCS		Lebanon	2010
58	ACR Copper Tube/Pancake Coils	ASTM A280	C12200/C27200	16-40mm	0.7-2.8mm	6575pcs	MIL	Lebanon	2010
59	Brass Tube and Pancake Coils	ASTM B88	L/K	1/2-3 1/8"	0.76-2.78mm	1580pcs		Kuwait	2010
60	Copper Tube	ASTM A280	H58	1/8-1/4"	0.76mm	3230	MIL	China	2010
61	Spiral Welded Pipe	API 5L	C350Mpa	355-1400mm	10-15.9mm	236.340MT		Solomon Islands	2010
62	Spiral Welded Pipe	API 5L/ASTM A53	B	18-40"	12.7mm	778.82MT		Egypt	2010
63	ERW/SSAW/LSAW	API 5L/AS 1163	X42/C350L0	237.1-914.4mm	6.4-12.7mm	2141.70MT		Australia	2010
64	Carbon Steel Flange	ASME B16.47 /B	ASME SA105N	36"	Sch.20	2 pcs		Singapore	2010



METALS INTERNATIONAL LIMITED

65	Stainless Steel Flange	ASME B16.48 /B	ASME SA182 304I	36"	Sch.20	pcs		Singapore	2010
66	Induction Bends	API 5L	X70 PSL2	1067mm	21mm	668MT	QGC/ TGRC	Australia	2010
67	Stainless/Carbon SMLS Pipe/Fitting	ASTM A312/API 5L	304/B	26.3-273.1mm		238MT	BV	Italy	2010
68	ERW	API 5L/AS 1163	B/C350L0	2"-24"	5.-6.25mm	5805.63MT		Australia	2011
69	Stainless Seamless	ASTM A312	TP347H	355.6mm	19.05mm	1200M		Iran	2011
70	HFWD+DFBE	API 5L PSL 2/AS 2885.1+AS3862	X56	323.9	7/13.5	720	Jemena/ Moody	Australia	2011
71	Carbon Seamless	API 5L PSL 2	X52	33.4-457.2mm	4.55-25.4mm	1859.739MT	BV	UAE	2011
72	Carbon Seamless	API 5L/ASTM A106	B	114.3mm	6.02mm	3547.6MT		Indonesia	2011
73	Carbon Seamless	API 5L /ASTM A106 /NACE M0175	B	1/2-8"	2.6-19.05mm	1658MT		Australia	2011
74	Pancake Coils	ASTM B280		6.35-15.88mm	0.76-0.8mm	24076kg	MIL	Russia	2011
75	Roll Grooved HDG	API 5L	X42	114.3mm	6.02	80.401	MIL	New Zealand	2011
76	ERW	API 5L/ASTM A53/AS1163	B/X42/C350L0	60.3-609.6	3.91-12.7m	1849MT	MIL	Australia	2011
77	Seamless+LSAW	ASTAM A106/API 5L PSL2	B	21.3-914mm	3.73-50.1mm	1922.319MT	MIL	Australia	2011
78	Elbow	ASME B16.9	API 5L Gr.B	4" 6"	Sch40	200pcs	MIL	Indonesia	2011
79	LSAW Pipe	API 5L	X52	812.8-914.4mm	9.52-12.7mm	27.157MT	MIL	Australia	2011
80	Galvanised ERW Pipe	API 5L	X42	114.3mm	6.02mm	804.07MT	MIL	Australia	2011
81	Bronze Tube	Qsn6.5-0.1	CuSn6	2.8mm	0.15mm	12900pcs	MIL	Ukraine	2011
82	Seamless Stainless	ASTM A269	TP316/316L	6.35-12.7mm	0.89-1.24mm	800pcs	MIL	Taiwan	2011
84	CS SMLS PIPE	ASTM A106B	X42	17.1mm-60.3mm	2.31-8.74mm	1200pcs	MIL	Qatar	2011
85	Carbon Seamless	API 5L	B	33.4-114.3mm	3.38-6.02mm	1425pcs	MIL	Sri Lanka	2011
86	Seamless Stainless	ASTM A312	TP304L	48.3-406.4	1.65-4.5mm	13230kgs	MIL	Iran	2012
87	LSAW Pipe	API 5L	X52	660-1219mm	9.52-12.7mm	310.56MT	MIL	Australia	2012
88	Seamless+LSAW	ASTAM A106/API 5L PSL2	B	21.3-914mm	3.73-50.1mm	1037MT	MIL	Australia	2012
89	ERW	API 5L/ASTM	B/X42/C350L0	60.3-609.6	3.91-12.7m	1000MT	MIL	Australia	2012



METALS INTERNATIONAL LIMITED

		A53/AS1163							
90	Carbon Seamless	API 5L /ASTM A106 /NACE M0175	B	1/2-8"	2.6-19.05mm	400MT	MIL	Australia	2012
91	Seamless Stainless	ASTM A213	TP316Ti	60.3	8.74mm	15000kgs	MIL	Ireland	2012
92	Seamless+LSAW+Stainless	ASME B36.10	CS API 5L Gr. B/ TP316L	21.3-914mm	3.73-50.1mm	300MT	MIL	Australia	2012
93	SSAW	API 5L Gr. B PSL 1/ASTM A252 Gr. 3	X52	355.6-457mm	9.53mm	535MT	MIL	Australia	2012
94	Casing Pipe	API SPEC 5B&5CT	K55	114.3-273.1mm	6.35-8.94mm	2475.42MT	MIL	Australia	2012
95	Boiler Tube	ASME SA213, ASME SA210	T11/T22/TP410	38.1mm	2.8-3.4mm	157.704MT	BV	Korea	2012
96	ERW	API 5L/AS 1163	X42/C350L0	323.9-610mm	6.4mm	222MT	MIL	Australia	2012
97	Carbon Seamless	API 5L /ASTM A106 /NACE M0175	B	1/2-8"	2.6-19.05mm	550MT	MIL	Australia	2012
98	Stainless tube	ASTM A213	TP321/TP304/304L	60.3-168.3mm	2.77-3.4mm	1180meters	MIL/BV	England	2012
99	Stainless tube	ASTM A213	TP316L	8-9.5mm	0.5-0.7mm	15000meters	MIL	Spain	2012
100	ERW	API 5L/AS 1163	X42/C350L0	21.3-610mm	2.77-12.7mm	4000MT	MIL	Australia	2012
101	Stainless tube/Elbow	ASTM A312/A403	TP316/316L	114.3mm	3.05/6.02	3000meters+15pcs	MIL	Sudan	2012
102	Seamless carbon pipe/elbow	ASTM A106/ASTM A234/ASME B16.9	GR.B/	114.3mm	6.02	5400meters+20pcs	MIL	Sudan	2012
103	ERW	API 5L	GR.B+3LPE	4"	6.02mm	19.3MT	Total	England	2012
104	Stainless EFW pipe	ASTM A312	TP304	26.7-60.3mm	2.11-3.38	3300meters	MIL	Singapore	2012
105	Stainless tube	ASTM A213	TP316L/TP321	8-9.5mm	0.5-0.7mm	50000KG	MIL	Spain	2012