



SHENZHEN MICROTEC TECHNOLOGY CO., LTD.

Address: 25<sup>th</sup> Floor, East Block of Wenhua Building, #1027 Shennan East Road, Shenzhen, China  
Tel: 0086-755-25110535/25109827 Fax: 0086-755-25119787 [www.szmicrotec.com](http://www.szmicrotec.com)

---

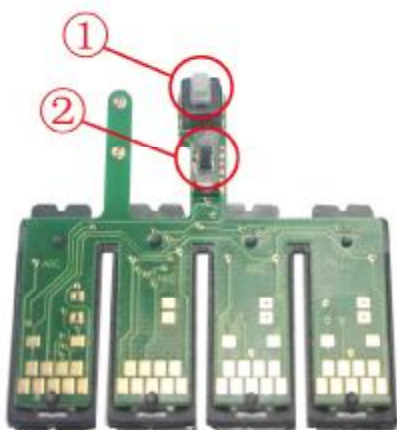
## Introduction for New Combo Chip

Currently with the continuous updates of Epson Chips, more and more CISS users found that it's difficult to reset chips when ink is used up. Users have to remove the cartridges out and install again to reset Chips. It causes more trouble in this way.

Therefore our company developed out new Combo Chip with the **Reset button** and **Switch** to solve the above problems for CISS users. The White button ① (as the first picture shown) is the Reset button. By pressing this button you can easily Reset Chips. No need to take out the cartridges to reset any more.

And the additional and also most important feature of this new combo Chip is the invention of Black Switch ②(as the first picture shown). This black switch decides whether you should use original cartridge or not. When the black switch is down, this combo chip can be used without original cartridge and when it's up, it can be used with original cartridge on. It's much more flexible and can satisfy different customers' needs.

Below please find the detailed instruction about how to use this new combo chip and how to reset with white button.

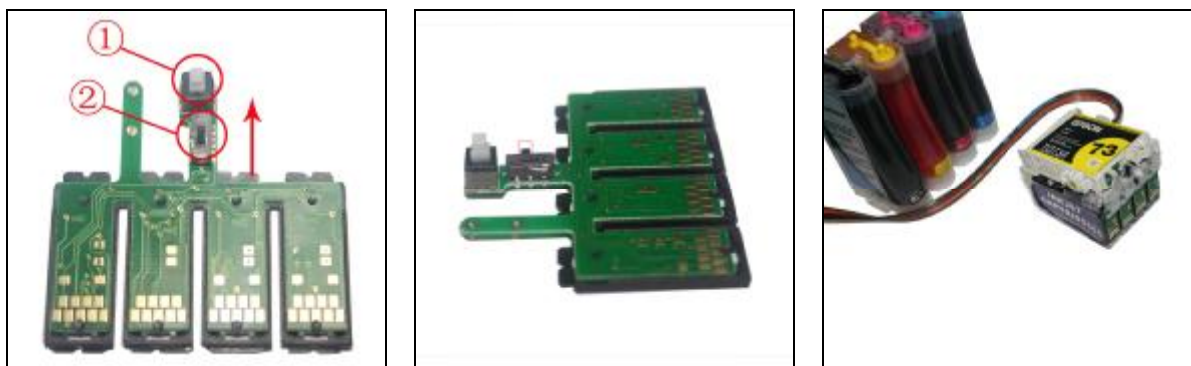


- ①: Reset button
- ②: Black Switch

## 1. Function of Black Switch



When the black switch ② is down as the above picture shown, this combo chip can be used without original cartridge. CISS can function well. However, if there is any chip unrecognizable, we suggest you to turn up the black switch and put one original cartridge on to try again as the following pictures shown.



When the black switch ② is up as the above picture shown, this combo chip should be used with original cartridge on.

## 2. Function of the Reset Button



When the ink indicator light turns red and computer informs you to change cartridges, please press the Replace-cartridge-button (which is flashing) on the printer.



The printer will show you the cartridges which should be reset. Then press the Replace-cartridge-button again to move the cartridges carriage to replaceable position.