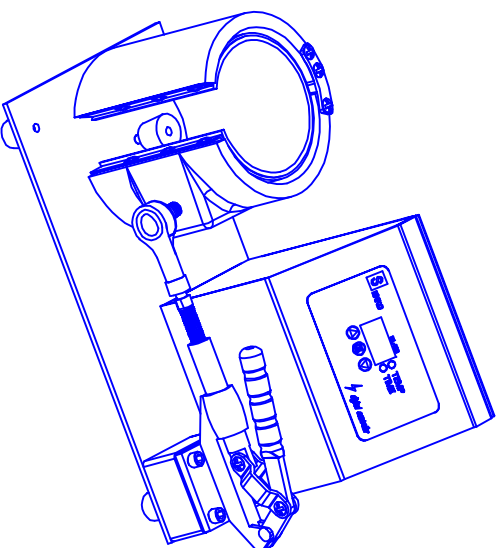
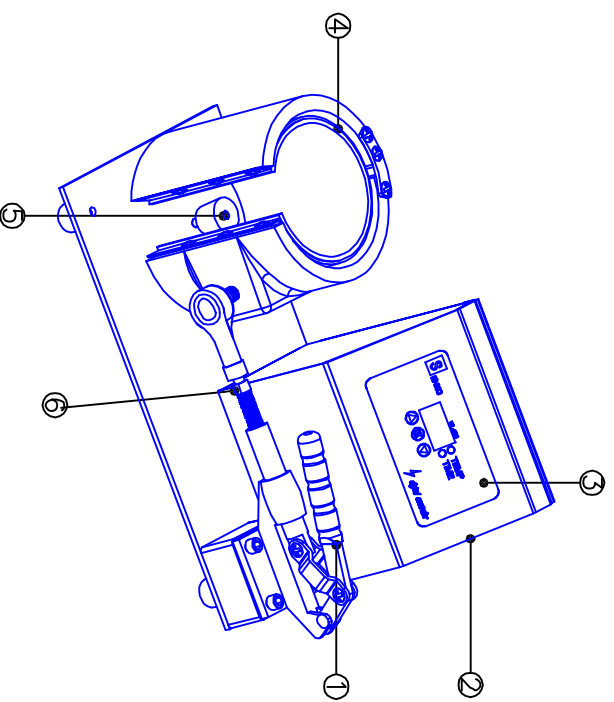
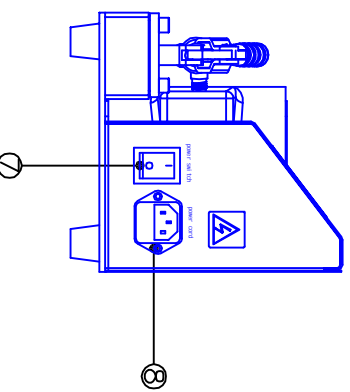
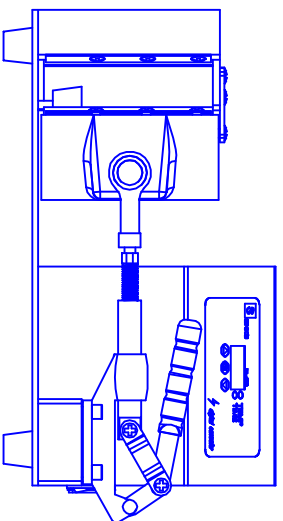


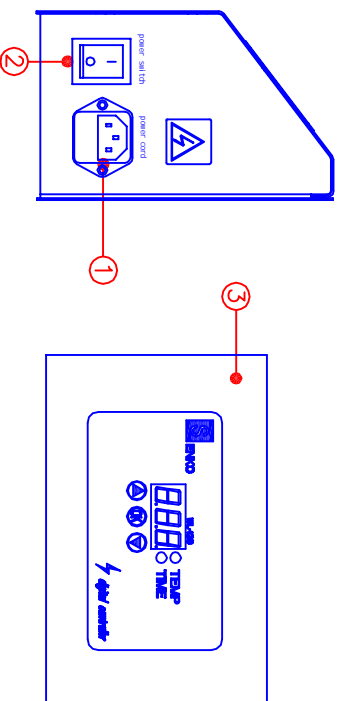
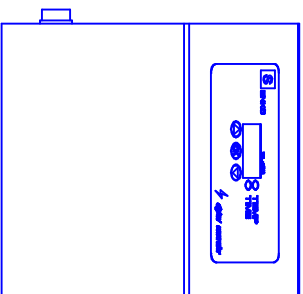
# Mug heat press Machine Manual





# Assembly Drawing



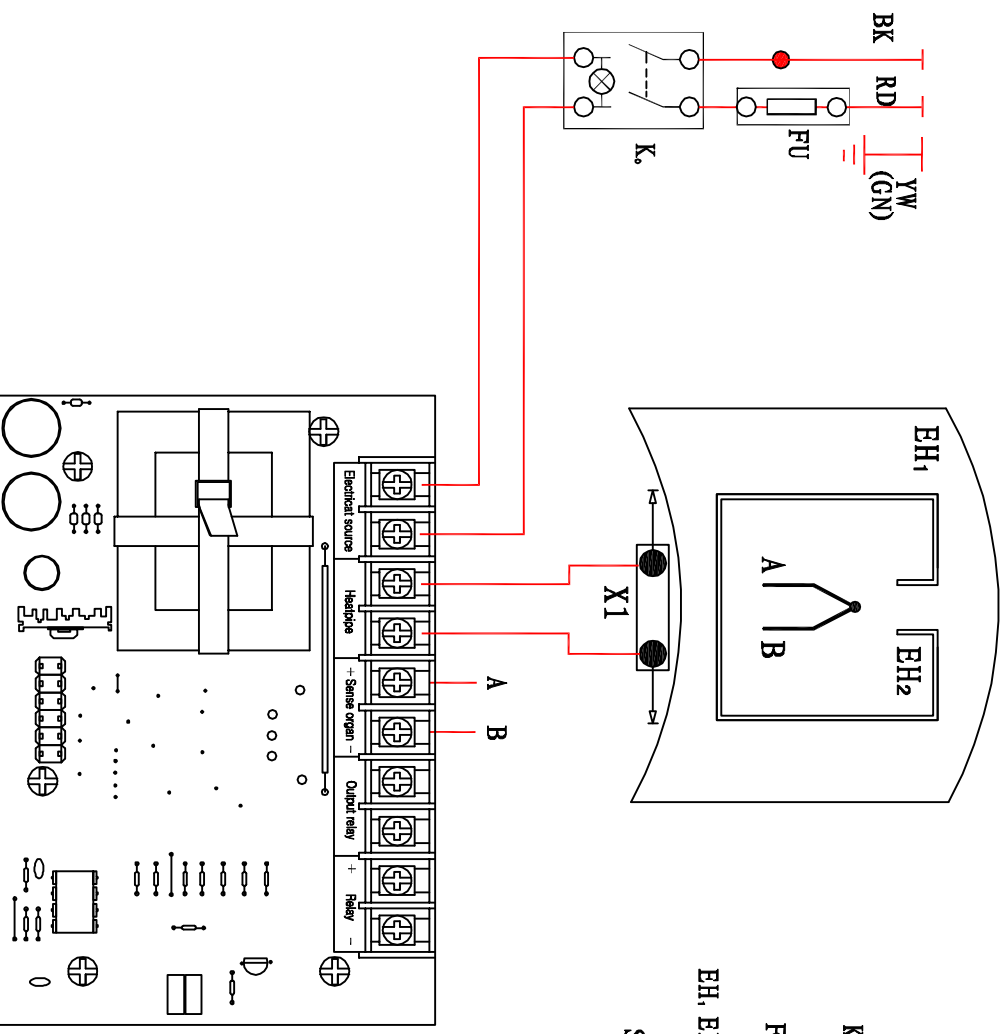
- |                   |                          |                     |
|-------------------|--------------------------|---------------------|
| ① Handle bar grip | ② Electrical case        | ③ Digital display   |
| ④ Heat platen     | ⑤ Height adjuster        | ⑥ Pressure adjuster |
| ⑦ Power switch    | ⑧ Power socket with fuse |                     |



## How to program mug heat press

- Step1. Place the mug into the machine, Adjust the height to be moderate, and make sure the mug can be complete into mug heat platen.
- Step2. Adjust the pressure to be moderate.
- Step3. Plug the power cord ① and turn on the power switch ② .
- Step4. The digital display ③ flashes, and the TEMP light is ON.
- Step5. Set the temperature at 180 degree  
 transfer material). Press OK button and then the TIME light is ON  
 (Select with arrows the temperature according to different transfer material). Press OK button and then the TIME light is ON  

- Step6. Set the time at 30 seconds  
 material). Press OK button an TIME light is OFF, now the panel shows the temperature of the heat transfer material) and the temperature starts to rise.  
 (Setcet with arrows the time according to different transfer material). Press OK button an TIME light is OFF, now the panel shows the temperature of the heat transfer material) and the temperature starts to rise.  

- Step7. When the temperature rises to the set degree, the buzzer will send out a sound , Then close down the heat platen(meanime the sound stops).start to transfer.
- Step8. Time is counting down, Once time is up, the buzzer will send out a sound again, then open up the heat platen and press OK button, the sound stops.
- Step9. Work finish and take out the mug carefully, If you want to print on another mug, press OK button and confirm the TIME and TEMPERATURE set as last time , then repeat above process, Unplug the power cord when the machine is not in use.

# Circuit Diagram



K. : Power switch

FU: Fuse(1.5A/25V)

EH, EH<sub>2</sub> : Heating Element

SJ: Thermostat