

PIANO BOOK CISS INSTRUCTION

Thank you for purchasing "PIANO BOOK" Continuous Ink Supply System. We appreciate your support and will try our best to make your experience with our products a pleasant one. Printing has been a different experience ever since you installed "PIANO BOOK" Continuous Ink Supply system on your own printer. Just imagining being able to print without regard to the ink level in those expensive little cartridges.

Please take your time installing "PIANO BOOK" Continuous Ink Supply system. Do not remove your old cartridge until you have the CIS system primed and ready to install (to prevent the drying of heads). In addition, make sure you are getting perfect nozzle checks before installing the "PIANO BOOK" CIS system. The CIS system won't be able to work properly if the nozzles are previously clogged.

Most people get a perfect nozzle check the first time after installing the "PIANO BOOK" Continuous Ink Supply system; others may need to run two or three cleaning cycles or let the printer sit for a while before they get the perfect results.

1. Printer testing:

1. Check whether the printer is in normal condition, like mechanical status, lubrication status etc.
2. Print testing lines to ensure the printing head is good condition.
3. Print pictures to see whether the printing image is ok.

2. Installation Procedure

Step 1: Preparation



Put the CISS on the left or right side of the printer.



Keep the CISS in horizon to avoid leakage



Make a small hole with a needle or the top of the spring bottle to let air in



Step 2: Take out the original cartridges



Press the button to replace cartridges



Move the carriage to the right side



Pull out the power cord, then you can move the carriage

Step 3: Remove the carriage cover



Remove the clip of the cartridge, as the above red rectangle shown.



Use a screwdriver to insert into the joint slightly



Remove the clip



Then remove the cartridge cover directly



Take out the original carts



Ready to install CIS

Step 3: Install Cartridges



Move the carriage to the left-side



Place the cartridge and pipeline though the printer cover as above picture shown



Then move the carriage to the right-side



Insert the CISS cartridge in the same way as above picture shown

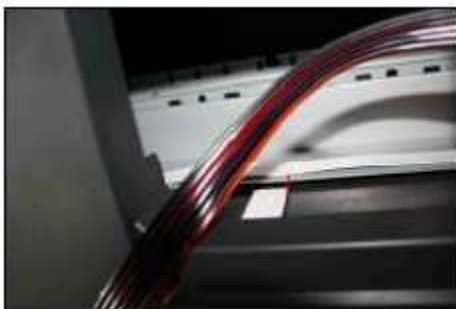


Press those cartridges to make sure it is well installed



As the red rectangle shown, if all the cartridges are well installed, there will be a little sound

Step 4: Fix the Support Arm



Stick the clips like the picture shown



The clip along the bottom side of the printer cover



Stick the other clip on left button side of the printer, the angle is 30 degree



Circumrotate the tube 90 degree as above picture shown.



Clip the tube



Step 5: Adjust Pipeline



Move the carriage to the leftmost and rightmost to make sure that the tube can be straight.

Installation is finished.



Too long



Twist



Perfect

Step 6:

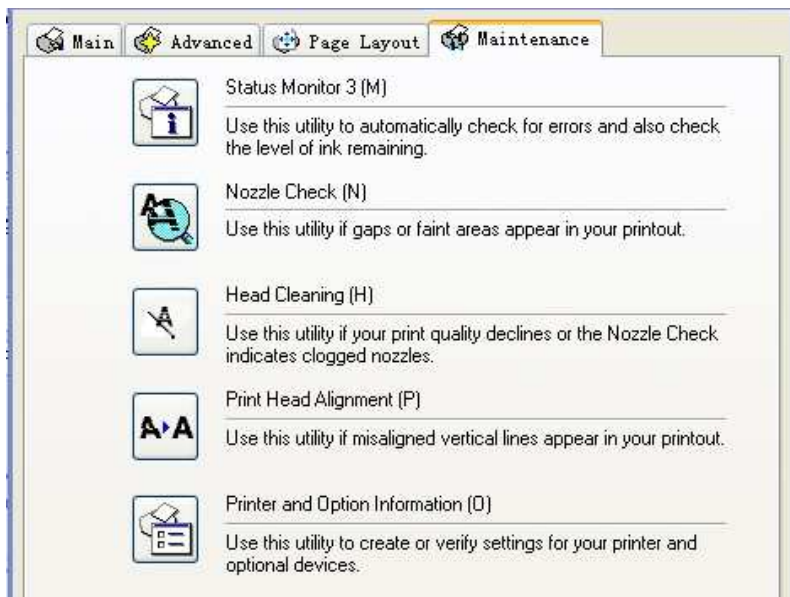


Connect the power cord.

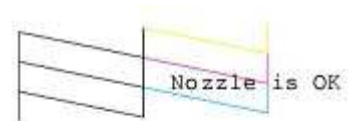


Turn on the power and check whether the printer can work

Step 7: Check the nozzle



Enter checking nozzle panel



Print test lines. If it is OK, then you can begin using.



If there is broken lines, then pls clean the printer head.

Broken lines may be caused by air entering the nozzles. If there is still some broken lines after cleaning printer head repeatedly, especially for single color, then you can leave the printer for about 1 hour. Then the broken lines may disappear. If there is still such problem, then pls contact local dealer.

4. Chip reset



If there is light flashing during printing,



If there is panel reminding you to change the cartridge, then pls turn off the printer and re-start it after 1 minute.



The chip is reset

5. Refill ink



Check which color ink was run low



filling ink from the top small hole



filling ink by syringe from top small hole

6. Attention for Maintenance:

Take out the CISS including the inner cartridges and other components. Then remove support arm from printer, and re-install original cartridges. Please inquire local dealer before sending to maintenance.

7. Notice:

1. Please don't take out cartridge at random after installing the CIS system. Keep the CISS on the same level with the printer.
2. Don't place the CISS too much higher or lower than the printer.
4. Suggested using in a dry place between 15 and 35 degree. Avoid exposure to direct sunlight.
5. Don't reverse or lean the continuous ink supply systems during shipping. Please make sure all the ink filling holes and ventilation holes are closed tightly during transportation. Otherwise, the ink may leak.
6. Don't sway the cartridge frequently. It may cause ink leakage.
7. Don't pull out the connector of cartridge and don't tear off adhesive tape at the bottom of cartridge.

8. Warning:

1. Not drinkable; keep it out reach of children.
2. Avoid exposure to direct sunshine and don't keep it in high or freezing temperature.
3. Avoid collision and fallen down.