

# PIANO BOOK CISS INSTRUCTION

Thank you for purchasing "PIANO BOOK" Continuous Ink Supply System. We appreciate your support and will try our best to make your experience with our products a pleasant one. Printing has been a different experience ever since you installed "PIANO BOOK" Continuous Ink Supply system on your own printer. Just imagining being able to print without regard to the ink level in those expensive little cartridges.

Please take your time installing "PIANO BOOK" Continuous Ink Supply system. Do not remove your old cartridge until you have the CIS system primed and ready to install (to prevent the drying of heads). In addition, make sure you are getting perfect nozzle checks before installing the "PIANO BOOK" CIS system. The CIS system won't be able to work properly if the nozzles are previously clogged.

Most people get a perfect nozzle check the first time after installing the "PIANO BOOK" Continuous Ink Supply system; others may need to run two or three cleaning cycles or let the printer sit for a while before they get the perfect results.

## 1. Printer testing:

1. Check whether the printer is in normal condition, like mechanical status, lubrication status etc.
2. Print testing lines to ensure the printing head is good condition.
3. Print pictures to see whether the printing image is ok.

## 2. Installation Procedure

### Step 1: Preparation



Put the CISS on the left or right side of the printer.



Keep the CISS in horizon to avoid leakage



Make a small hole with a needle or the top of the spring bottle to let air in



### Step 2: Take out the original cartridges



Press the Power button



When the cartridge moves, pull out the power cord



Open the carriage cover to certain side of the cover angle (about 60 degree) than use a carriage. screwdriver to insert into the joint as the picture shows.



Turn the screwdriver clockwise and lift the cover and then it can be removed.



make the right separate with the screwdriver

### Step 3: Install Cartridges



Take out the original carts. cartridge in the same way shows.



Move the carriage to the leftside



insert the CISS as the picture



Move the carriage to its original place



Then install the CISS carts well

### Step 4: Fix the Support Arm



Stick the support arm in the place as the picture shows



Then stick another support arm over the first one



Stick the short support arm parallelly picture shows

### Step 5: Install the Tube



Clip the tube



Move the carriage to the rightmost and make sure that the tube can be straight



Installation is finished.

### Step 6:

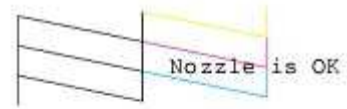
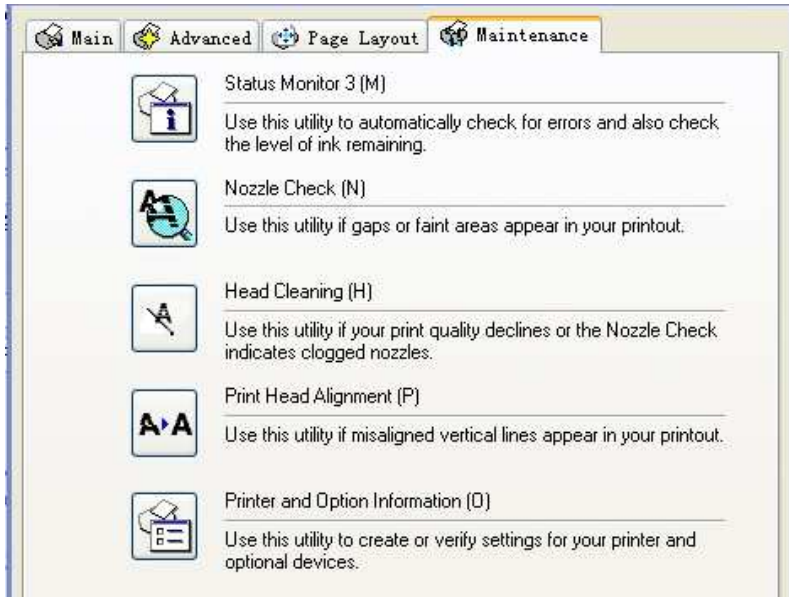


Connect the power cord.



Turn on the power and check whether the printer can work

## Step 7: Check the nozzle



Print test lines. If it is OK, then you can begin using.



If there is broken lines, then pls clean the printer head.

Broken lines may be caused by air entering the nozzles. If there is still some broken lines after cleaning printer head repeatedly, especially for single color, then you can leave the printer for about 1 hour. Then the broken lines may disappear. If there is still such problem, then pls contact local dealer.

## 4. Chip reset



If it shows this panel during printing, and there is light flashing, but the printer can keep working, then you can ignore it.



If there is panel reminding you to change the cartridge, then pls turn off the printer and re-start it after 1 minute.



The chip is reset.

## 5. Refill ink



Check which color ink is run low



filling ink from the top small hole



filling ink by syringe from top small hole

### Notice:

1. Please don't take out cartridge at random after installing the CIS system. Keep the CISS on the same level with the printer.
2. Don't place the CISS too much higher or lower than the printer.
4. Suggested using in a dry place between 15 and 35 degree. Avoid exposure to direct sunlight.
5. Don't reverse or lean the continuous ink supply systems during shipping. Please make sure all the ink filling holes and ventilation holes are closed tightly during transportation. Otherwise, the ink may leak.
6. Don't sway the cartridge frequently. It may cause ink leakage.
7. Don't pull out the connector of cartridge and don't tear off adhesive tape at the bottom of cartridge.