

2.5" SATA HDD MEDIA PLAYER & PERSONAL VIDEO RECORDER

- video (RM/RMVB, H.264, MPEG-2/4, DivX, XviD, FLV, WMV), music (MP3,WMA,OGG,AAC,RA), and photo (JPG,GIF,BMP)
- File transfer/sharing between internal HDD, external USB and network PCs through wired Ethernet or WIFI (dongle optional)
- Personal video recorder with timer record function
- Playlists and File management



CS-T60C

Please read this manual thoroughly before you start to use this product. Please keep this instruction manual safely for future reference.

Contents

1.	Safety Precautions-----	1
2.	Features & Specification (Accessories) -----	2
3.	Front and Rear Panel-----	4
4.	Remote control-----	5
5.	Hard Disk Insertion -----	6
6.	Hard disk formatting and partition-----	7
6.1	Making partition & Formatting the HDD under Windows 98SE/ME	
6.2	Making partition & formatting the HDD under Windows 2000/XP/Vista	
7.	Installation and Connection-----	9
8.	Getting Started (Basic operations)-----	10
9.	Media playback , File copy and File management	
9.1	Watching movies-----	11
9.2	Listening music-----	12
9.3	Viewing photo-----	13
9.4	Browse All Files & File management	
9.4.1	Music slide show-----	14
9.4.2	Playback files on external USB device-----	14
9.4.3.	Playlist and file management-----	14
9.4.4	File copy between network, PC and USB-----	16
9.4.5	Playback files on network neighborhood-----	16
10.	Browse, modify recorded files-----	17
11.	Recording	
11.1	Instant recording-----	17
11.2	Timer recording – Advanced Scheduler-----	18
12.	Setting-----	20
13.	Troubleshooting-----	21

1. Safety Precautions

- 1) **Important!** When it is being connected to PC by USB cable, don't connect it to TV/audio system/AV source at the same time, otherwise it may cause HDD failure and electromagnetic interference.
- 2) **Important!** The cooling sponge covered on the main chipset should never be removed. In case it is relocated during the installation of the hard drive, put it back on the chipset.
- 3) **Important!** Use the power adapter supplied with the unit only. Use of a non-specified adapter will cause inaccurate or improper operation of the unit and will damage the power supply circuitry.
- 4) **Important!** Please assure yourself to unload the unit of any electrostatic charge. During the installation of the hard drive, do not connect any outer cables, like A/V cable, component video cable. Plug the adapter into the AC outlet **AFTER** all the cables have been connected including A/V cable, component cable, power cable.
- 5) Do not let any liquid or foreign substance be inserted inside the unit that could result in a short circuit with fire or electrocution hazards.
- 6) To prevent fire and electric shock, don't expose the unit to the moist or rainy places.
- 7) Don't expose the unit to the places with high temperature, dust and vibration.
- 8) Keep the unit away from magnetic devices, which may cause damage of the data stored in the unit.
- 9) Don't block the vents. Free airflow should be maintained around the unit.
- 10) Hard Disk is a delicate device and may be damaged by slight impact. Do not drop the unit or let it be subjected to impacts that could seriously damage your unit or the hard drive.
- 11) When connecting or disconnecting AV cables, disconnect the power first.
- 12) When cleaning this product, disconnect the power and then wipe the unit with a soft piece of dry cloth. Do not use any chemicals or sprays for cleaning.
- 13) Do not touch the power plug with wet hands or use defective power cables and electric outlets. Doing so might result in electric shock or fire. Only use attachments accessories specified by the manufacturer.
- 14) Protect the power cord from being walked on or pinched, particularly at plugs, or at the point where they exit from the player.
- 15) Unplug the player during lightning storms or when unused for long periods of time.
- 16) Do not mix batteries (old and new or carbon and alkaline, etc.) in the remote control. Remove batteries when the unit is not used for a long time.
- 17) Don't attempt disassembling or remodeling the unit. When the unit is not working properly, please contact professionals for repair.
- 18) In order to unplug the unit, press the STOP button before removing cables or turning off the power.

2. Features & Specification (Accessories)

As small as a DVD case, CS-T60C might be the most portable HDD media player with recording function for home/hotel use. (128*128*27mm, 194g w/o HDD)

After inserting a SATA HDD into it, you can copy the movies, music and photos from PC to CS-T60C, then enjoy the multimedia entertainment content with family at TV screen.

It boasts of true multi-format media decoding and encoding, supports decoding many media formats including video (RM/RMVB, H.264, MPEG-2/4, DivX, XviD, FLV, WMV), music(MP3,WMA,OGG,AAC,RA), and photo(JPG,GIF,BMP).

The most distinguished feature is that it supports video clips from YouTube (FLV video), RMVB from Real Networks, and decode up to 12 million pixels high definition photo in 2 seconds.

It has PVR feature to record real time TV or DVD program at DVD quality, i.e. D1 (720x576/720x480) resolution.

By Ethernet or WIFI, files can be transferred and shared between internal HDD, external USB and network PCs.

Network	
LAN& WIFI	File sharing/playback and transfer/copy between PC and HDD player
	USB dongle for WIFI (optional)
Storage	
Internal Storage	2.5" SATA-I or SATA-II HDD (1.5Gb/s or 3.0Gb/s)
USB Mass Storage	USB Mobile HDD, Flash-Disk
	USB Card Reader (SD/MMC/MS/CF/SDHC/XD)
	Digital Camera
Playback Formats	
Video(Movie)	Real Media 8/9/10, D1(720x480) (.RM,.RMVB)
	Flash Video VP6, D1 (.FLV)
	MPEG-1 (.MPG, .DAT)
	MPEG-2, 720p(1280x720) (.MPG, .MPEG,MP4, .VOB, .TS, .M2TS)
	MPEG-4,DivX3/4/5, XviD, 720p (.AVI, .MP4, .TS,.MKV)
	WMV7/8 720p (.ASF, .WMV)
	VC-1 BP/MP, 720p (.ASF, .WMV)
	H.264 BP/MP/HP, D1 (.AVI, .MP4,.MKV, .MOV,.TS)
	AVI audio codec: MP3, AC3, ADPCM, WMA
	Multiple embedded audio track switch
Subtitle: SUB (MicroDVD format), SRT (SubRIP format), SMI	
Audio (Music)	MP3(24~320kbps),WAV,WMA7/8(16k~384kbps),AAC-LC,OGG Vorbis, RA,AC-3(embedded in movie), FLAC, MP2 (.MPA)
	Subtitle: LRC (.LRC)
Image	JPEG up to 40 million pixels (.JPG), BMP, GIF, PNG

	Resolution up to 12 million pixels, Slide show, Music background, Photo preview,Thumbnail/9PIC
Recording function	
AV input	standard Composite Video and L/R Audio input for recording
Features	Instant recording and scheduled recording
Record format	Video: MPEG-4 (.AVI file), up to D1 @ 30fps Audio: MP3, Stereo, 48 KHz, up to 196kbps
Recording quality	3 level: HQ=D1 (720x480, 30fps), MQ (720x480, 30fps, low bit rates), LQ=CIF (360x240, 30fps)
Location	The recorded file is stored in “recorded” directory of partition “C” by default. But the user can also choose to store the recorded files on other partitions of the internal hard disk or the external USB devices.
Audio and video output	
Audio output	RCA L/R analogue audio output
	SPDIF digital optical audio output (for connecting to amplifier)
Video output	CVBS (480i/576i)
	YPbPr (480p/576p,720p)
Others	
File system	NTFS, FAT16/32,HFS+,EXT2/3,VFAT
OSD language	English/Chinese (French and German supported via external font file).
TV system	PAL & NTSC
OS Support	Plug & play, compatible with Win2000, WinXP, Windows Vista, Linux, Mac OS
File manager	File play/file browser (navigation, play single file, play all files in a particular directory); File editor (file/directory rename/delete, playlist creation); File information (media file information display, remaining disk space showing, file size display)
Firmware	Intelligent firmware update
Product view	
Front panel	Power button, LED indicator (Power, HDD, LAN, PLAY, and Recording), Mini optical output, AV input(RCA), USB2.0 OTG (Mini B type, device), USB2.0 (A type, host)
Back panel	RJ45 net, Component video (YPbCbPrCr), AV output(RCA), DC in 12V (1A)
Accessories	
In the box	CS-T60C main device, USB dongle (optional), Remote control, batteries(optional), Power Adapter, AV cable(2pcs) , component cable, USB Cable, User Manual, Screws.

Note: The specifications and design of this product are subject to change without notice.

3. Front and Rear Panel



Front Panel

- | | |
|-------------------------------------|---------------------------------|
| 1. power button (on/off button) | 7. USB 2.0 host port |
| 2. LED to indicate power status | 8. USB 2.0 OTG port |
| 3. LED to indicate HDD work status | 9. composite video input of RCA |
| 4. LED to indicate network status | 10. left audio input of RCA |
| 5. LED to indicate recording status | 11. right audio input of RCA |
| 6. optical audio output (mini type) | |



Rear Panel

- | | |
|---|----------------------------------|
| 1. RJ45 net port | 5. right audio output of RCA |
| 2,3,4. component video output (Y, PrCb, PrCr) | 6. left audio output of RCA |
| 8. power input | 7. composite video output of RCA |

4. Remote control



- 1) **STANDBY:** Switch power on and standby mode
- 2) **DISPLAY:** Displays file information.
- 3) **REC list:** enter the “TIMER REC” menu
- 4) **MUTE:** Mute on/off
- 5) **Movie:** enter “movie” mode
- 6) **Music:** enter “music” mode
- 7) **Photo:** enter “photo” mode

- 8) **TV:** access AV source
- 9) **Home:** return to home menu
- 10) **Play/Pause:** pause or resume play the current playback
- 11) **Navigation – Arrow keys:** LEFT, RIGHT, UP, DOWN
- 12) **OK:** confirm the selection; pop up the option menu
- 13) **Left:** return to the previous directory; rotate photo anticlockwise
- 14) **Right:** pop up “function select menu”; rotate photo clockwise
- 15) **Function:** pop up “function select menu”
- 16) **Stop/Exit:** Stop playback/recording or exit a window/menu
- 17) **REC:** In AV source mode, press it to start recording.
- 18) **Playmode:** shuffle and repeat mode. When playback photos, press it twice to set Picture Transition (the way of shifting scene)
- 19) **Seek:** access any desired time point of the current track when playback movie or music
- 20) **FR:** step backward when playing movie
- 21) **FF:** fast forward at 1x, 2x, 3x speed without sound when playing movie; playback at faster speed with continuous sound when playing music.
- 22) **PREV/NEXT:** skip backward /forward
- 23) **Vol+/Vol-:** increase/decrease volume
- 24) **Playlist:** when you browse movie/music/photo/all files, you can press “playlist” to instantly access playlists.
- 25) **Subtitle:** Press to activate available subtitles in a file.
- 26) **SF:** When playing movie or music, slow forward at 1/2,3/4 speed with continuous sound
- 27) **TV system:** shift between composite video output and YPbPr output
- 28) **Zoom:** zoom in when playback movies and photos or watch AV source
- 29) **9pic:** During playback photos, press “9 pic” and 9 thumbnail pictures can be previewed and you can select the desired one to start playback.

5. Hard Disk Insertion

Important! Handle the HDD carefully to prevent damage from impact or vibration. Do not press on the top or bottom of the HDD.

Important! Please assure yourself to unload the unit of any electrostatic charge. During the installation of the hard drive, do not connect any outer cables, like A/V cable, component video cable. Plug the adapter into the AC outlet AFTER all the cables have been connected including A/V cable, component cable, power cable.

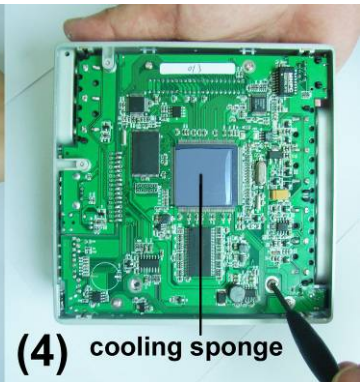
Important! The cooling sponge covered on the main chipset should never be removed. In case it is relocated during the installation of the hard drive, put it back on the chipset.

Please insert the HDD according to the following instructions.

- 1) Unfasten the eight screws on the two sides.
- 2) Remove the top and bottom aluminum covers.



- 3) Attach the HDD. Examine the pins of HDD and insert it carefully. It is recommended that the insertion of 2.5" HDD should be completed by a qualified technician.
- 4) Fasten the HDD to the main body with two screws (supplied).



- 5) Close the aluminum covers and secure them with the eight screws that were previously removed.

6. Hard disk formatting and partition

CS-T60C can recognize any formatted HDD. If the hard disk has been partitioned and formatted, you can skip this step.

When you insert a new hard disk into CS-T60C, you can connect CS-T60C to the PC and make Hard disk formatting and partition through PC.

6.1. Making partition & Formatting the HDD under Windows 98SE/ME

- 1) Click the Windows Start button, and select "Run" and the "Run" window will appear. Type "fdisk" in the text box of the "Run" window then click the "OK" button.
- 2) Select "5. Change current fixed disk drive" and press [Enter].
- 3) Type the last Disk number in 0% usage.

- 4) Select “1. Create DOS partition or Logical DOS Drive” and press [Enter].
- 5) Select “ 1. Create Primary DOS Partition ” and press [Enter].
- 6) Wait until finishing verifying the drive integrity.
- 7) After finishing drive integrity verification, type “Y” at “Do you wish to use the maximum available size for a Primary DOS Partition (Y/N)”.
- 8) Type the capacity or % which you want to use and press [Enter].
- 9) Drive integrity verification will start again. After finishing that, press [ESC] key when the “Primary DOS Partition created, drive letters changed or added” message displays.
- 10) Press [ESC] key again. “ Shut down Windows before restarting” message will be displayed. Press [ESC] key finally for exiting FDISK.
- 11) Type “ exit ” command at “C:WINDOWS>” and press [Enter] for returning to windows screen.
- 12) Unplug CS-T60C and plug again. New volume will be appeared at [My Computer]. Click mouse right button at the new volume and select [Format].

6.2. Making partition & formatting the HDD under Windows 2000/XP/Vista

The drive is initially not visible in Windows Explorer. For the drive to be seen in Windows Explorer it needs to be configured via the disk management Utility. Win-XP will normally recognize the unformatted /unpartitioned drive when you open disk management and start the wizard.

- 1) Right click on “My Computer”. Choose “Manage” from the pop up menu and “Computer Management” window will appear. Under “Storage”, choose the “Disk Management” folder.
- 2) The disk list will appear on the right side of the “Computer Management” windows. Right click the HDD of CS-T60C (marked as “Unallocated HDD”) from the list and from the pop up menu choose “New Partition” to make partitions on the chosen disk.
- 3) The New Partition Wizard opens up. Click Next.
- 4) Select the appropriate Partition Type. Choose Primary partition.

Primary –Normal selection for less than 4 partitions.

Extended – Used for 4 or more partitions.

- 5) Select the Partition Size. If you want one partition, simply click “Next”.

Set the size of the partition (The full drive capacity is the default). If the full Partition size is not used, right click on the remaining free space once the wizard has completed to partition that space. Repeat the Partition Wizard until the drive is how you want it.

Note: For the FAT32 Formatting, Partition Size is limited to 32GB.

- 6) Select the Driver letter. This allows you to select the drive letter for this partition. This will be the identification label of CS-T60C on your PC. We

recommend that you do not change anything on this screen and simply press “Next”.

7) Select the Partition Format. NTFS is the default format type in Windows XP/Vista, but FAT32 is popular for users that dual boot between XP and 9X. There is a limit that Windows XP/Vista cannot create a partition larger than 32 GB using FAT32. If you want the FAT32, Partition Size is limited to 32GB.

8) When the formatting is completed, detailed information will appear. Click the “FINISH” button to complete the work.

9) Once the drive has been initialized, partitioned, and formatted it will display as a healthy drive with the size and type of partition below the volume name and drive letter.

7. Installation and Connection

1) Connection to PC for file transfer /file management through USB

You can transfer the files from PC to HDD of CS-T60C and manage all the files on HDD. Copy compatible video/audio/image files to HDD so you can enjoy them when CS-T60C works as a multimedia player. You can also use CS-T60C as a USB hard disk enclosure and store all kinds of data files on HDD of CS-T60C.

- a) Before connecting to PC, make sure that the HDD is ready.
- b) Connect CS-T60C’s USB OTG port to PC’s USB port using the USB cable (supplied).
- c) Switch on the unit. Then you can see a new hard disk in your computer.

Note: Among all the connecting operations, connecting to PC has the highest priority. When it is being connected to PC as a removable hard disk, it cannot play or record.

Note: Upon connection your PC (Win-ME/2000/XP/Vista) should recognize the new USB connected drive without installing driver. For Windows98/98SE, Mackintosh system, you need to install the USB driver as per the following steps.

- a) Execute the run setup file of the USB driver installation software.
- b) Follow the instructions on the screen.
- c) Reboot your PC at the end of the installation.
- d) You should see the new Hard disk in Windows explorer.

2) Video-out connections

This unit supports Composite and Component video outputs.

- Composite Video: Video of RCA, use yellow connector of RCA cable (supplied)
- Component video: YPbCbPrCr, use red/green/blue component cable

Depending on the capabilities of your TV, you only need to make one video connection from these two options. Component video provides much better

quality as compared to a composite connection.

Note: After the connection is finished, turn on CS-T60C and TV. Select appropriate video input mode on your TV. Select correct video output of CS-T60C by pressing “TV system” on the remote control until you get the right screen.

3) Audio-out connections

This unit supports L/R audio of RCA and optical audio outputs.

- L/R audio of RCA: use white, red connectors of RCA cable (supplied). Connect this unit to the corresponding AUDIO-IN jacks on your TV or Hi-Fi Device.
- Optical audio: When you have a multi channel decoder/amplifier with optical input, you can enjoy 5.1CH high quality sound via optical cable.

4) AV-in connections (with Set top box/DVD player/other AV source)

Connect left (white), right (red) audio input and video (yellow) input to the appropriate terminal of your Set top box or DVD player or other AV source.

5) Connection to PC through a network for file sharing

Use LAN (Ethernet, RJ-45) cables to connect to your network Switch / Hub / Router to share the media files residing within folders or drives on your (wired-networked) PC. You can also choose to use the specified WIFI dongle (plug it into the USB host of CS-T60C).

8. Getting Started (Basic operations)

Power on CS-T60C, you can see the start up screen. Don't press any buttons before Home menu appears automatically, this will take some seconds.

Home menu



At the first glance of the Home menu, you can see a list of items including “Movie”, “Music”, “Photo”, “All files”, “Recorded file” and “TV”. Keep pressing “Down”, you can see there is “Setting” under “TV”.

Select “Movie”, you can see the “Movie” tab on the upper left corner of the screen and a main content list under the tab. On “Movie”, “Music”, “Photo” and “All

files” modes , you can always see the main content list. CS-T60C provides playback of media files residing on your PC(via network streaming), local HDD (installed inside CS-T60C) or external storage device (via USB-Host). Note that the main content list always includes “Network neighborhood”, partitions of hard disk(like c/d/e), “playlist” and “usb”. When there are many partitions of hard disk listed, you may not be able to see the full list on the first page. Keep pressing “Down” when you want to see the full list.

Main Content List



Basic operations:

- Press “up” and “down” to locate the cursor.
- Press “ok” to confirm.
- Press “left” to return to the previous screen, folder or device. Note that you cannot press “left” to return when the file is under playback status.
- Press “stop/exit” to exit a menu/window.
- Except on “Setting” mode, you can press “Home” to return to the Home menu anytime.
- When you shift between “movie”, “music”, “photo”, the player can memorize the last file/folder location. But if you go back to home menu or enter AV source mode, the memory function will fail.

The system has file filter function. On “Movie” mode, only video files can be played in the current directory. The same applies to “Music” and “Photo” mode. On “All files” mode, file filter is disabled and you can view all the video, audio and image files, but still you cannot see other data files.

9. Media playback

9.1 Watching Movies

Press “Movie” on the remote control or select “Movie” in the home menu, a main content list will appear. Press “up” , “down” and “ok” to locate the cursor at your desired file. When the cursor locates at the file, a preview of the selected movie without audio will show in the preview window on the right side of the screen.

Playback operations for playing movies:

- OK: When the cursor locates at the file, press “ok” to start playback.
- Display: display video file information
- Mute: Stop Audio Output from the Player
- Play/Pause: pause or resume play the current playback.
- Function: When the cursor locates at the file, press “function” or “right” to pop up “function select menu”. Press “left” or “stop/exit” to exit.
- Stop/Exit: stop playback or exit a menu/window.
- Playmode: press “Playmode” to pop up the “set play mode” menu. When the cursor locates on “shuffle”, press “ok” to pop up the options. If “shuffle” is turned on, the system will randomly playback all the files. Repeat options include none (don’t repeat), single (repeat a single file), folder (repeat the folder). When finish settings, press “Playmode” or “stop/exit” to exit.
- Seek: randomly access any time point of the selected movie. During playback, press “Seek” and “Time search” window will appear, input your desired time and the playback will jump to that time point. If you don’t want to choose any time point, press “Seek” or “stop/exit” to exit. If you input a time longer than the file duration, a warning window will display the file duration and the operation is prohibited, press “ok” to exit the warning window.
- FR: step backward
- FF: fast forward at 1x, 2x, 3x speed without sound.
- PREV/NEXT: skip backward/skip forward
- Vol+/Vol-: increase/decrease the volume
- Playlist: when you browse movie/music/photo/all files, you can press “playlist” to instantly access playlists.
- Subtitle: select a subtitle
- Zoom : normal, 2x, 3x, 4x

9.2 Listening Music

Press “Music” on the remote control or select “Music” in the home menu, a main content list will appear. Press “up”, “down” and “ok” to locate the cursor at your desired file. When the track is under playback, the playback time information will be displayed above the system logo window and file information under the window.

Playback operations for playing music:

- OK: When the cursor locates at the file, press “ok” to start playback.
- Play/Pause: pause or resume play the current playback.
- Function: When the cursor locates at the file, press “function” or “right”

to pop up “function select menu”. Press “left” or “stop/exit” to exit.

- Stop/Exit: stop playback or exit a menu/window.
- Playmode: press “Playmode” to pop up the “set play mode” menu. When the cursor locates on “shuffle”, press “ok” to pop up the options. If “shuffle” is turned on, the system will randomly playback all the files. Repeat options include none (don’t repeat), single (repeat a single file), folder (repeat the folder). When finish settings, press “Playmode” or “stop/exit” to exit.
- Seek: randomly access any time point of the current track. During playback, press “Seek” and “Time search” window will appear, input your desired time and the playback will jump to that time point. If you don’t want to choose any time point, press “Seek” or “stop/exit” to exit. If you input a time longer than the file duration, a warning window will display the file duration and the operation is prohibited, press “ok” to exit the warning window.
- FF: playback at faster speed with continuous sound. Press “FF” again or “play/pause” to resume normal playback.
- PREV/NEXT: skip backward/skip forward
- Vol+/Vol-: increase/decrease the volume
- Playlist: when you browse movie/music/photo/all files, you can press “playlist” to instantly access playlists.

9.3 Viewing Photos

Press “Photo” on the remote control or select “Photo” in the home menu, a main content list will appear. Press “up”, “down” and “ok” to locate the cursor at your desired file. When the cursor locates at the file, a preview of the photo will show in the preview window and file information will be displayed under the preview window.

Playback operations for viewing photos:

- OK: When the cursor locates at the file, press “ok” to start playback.
- Slide show: When the photo is displayed in full screen mode, the slide show starts automatically. In “Setting→system setup→slideshow time”, when the interval is set as 5 or 10 seconds, the system playbacks all pictures in the same folder and every picture will be displayed for 5 or 10 seconds. When the interval is set as 0 seconds, the pictures will be displayed one by one without interval.
- Previous/Next: manually playback the previous/next photo. This will not stop slide show.
- Playmode: press “Playmode” to pop up the “set play mode” menu. When the cursor locates on “shuffle”, press “ok” to pop up the options. If “shuffle” is turned on, the system will randomly playback all the files.

Repeat options include none (don't repeat), single (repeat a single file), folder (repeat the folder). When finish settings, press "Playmode" or "stop/exit" to exit. In addition, there is another feature for photo playback, i.e. special effects for scene shift. Press "Playmode" twice to pop up "Set Picture Transition". The options include "none" (normal playback), "cover bottom"(from top to bottom) and "cover top"(from bottom to top). When finish settings, press "Playmode" or "stop/exit" to exit.

- Rotate a photo: While browsing a photo, press "right" repeatedly to rotate clockwise (90° → 180° → 270° → 0°), press "left" repeatedly to rotate anticlockwise. Rotating will stop slide show. Press "play/pause" or "previous" or "next" to resume slide show.
- Zoom in: Press "zoom" to zoom in the photo. Five zoom levels are available (normal, 2x, 3x, 4x, 5x). When the photo is zoomed in, you can press "left/right/up/down" to move the photo. Zoom will stop slide show.
- Stop: press "stop/exit" to stop viewing photo and return to the file browser.
- 9pic: During playback, press "9 pic" and 9 thumbnail pictures can be previewed and you can select the desired one to start playback.

9.4 Browse All Files & File management

On "All files" mode, file filter is disabled and you can view all the video, audio and image files, but still you cannot see other data files.

9.4.1 Music slide show

On "music" or "all files" mode, navigate to the folder containing audio files that you will like to use for background music. Start audio playback.

Enter "photo" or "all files" mode, navigate to the folder that containing image files and start photo slide show. Then you can view images while listening music. Press "stop" to stop photo slide show but remain music on , press "stop" again to stop music.

9.4.2 Playback files on external USB device

Connect the external storage device (like SD card, USB drive, USB HDD, digital camera) to CS-T60C's USB host port. Access Movie/Music/Photo/All Files mode, press "down" to locate the cursor at "USB". Press "ok" to enter the folder.

9.4.3 Playlist and file management

Playlist is a convenient and efficient way to access your favorite files. Playlist is simply a playback list of files stored everywhere inside the HDD. When the files are added to a playlist, the files are not copied nor moved to a new folder. When a file is removed from a playlist or the whole playlist is deleted, the file/files are not deleted from the HDD. A playlist can be a mix of movies, music and photos.

1) Create a playlist and playlist management

On main content list, enter “playlist”. You can also press “playlist” to instantly access “playlist” when you browse media files (on movie/ music/ photo/all files modes).

Press “function” or “right” to pop up the function select menu.

- New folder: create a new playlist
- Rename: rename the current playlist. A soft keyboard window will pop up and the cursor will locate at “enter” and full name will be selected by default. Press “up/down/left/right” to move the cursor. When the cursor moves to “->” and press “ok” to enter, the full name can be deselected. When the cursor locates at “Aa”, press “ok” on the remote control to toggle between lowercase and uppercase. Enter “Delete” to delete the letter before the cursor.
- Select: select the current playlist
- Select All: select all the playlists
- Deselect: deselect the current playlist
- Deselect All : Cancel the selection of all the selected playlists
- Delete: Delete all the selected playlists

When the cursor locates at a file inside the playlist, press “function” or “right” to pop up the menu. After the file is selected, press “function” and choose “delete” to remove the file from the playlist.

2) File management and add files to a playlist

When the cursor locates at a file or a folder, press “function” or “right” to pop up “function select menu”. Press “left” or “stop/exit” to exit.

Function Select Menu



- Select: select the current file
- Select All: select all the files and/or all the folders
- Deselect: deselect the current file
- Deselect All : Cancel the selection of all the selected files

- Add to playlist: The files must be selected first before they can be added to a playlist. After the files are selected, press “function” or “right” to pop up the “function select menu”, then locate the cursor at “Add to playlist”. Press “ok” on the remote control to pop up the “Add to...” window, the default playlist will be displayed and the cursor will locate at “ok” button. Press “up” and “ok” on the remote control to pop up the playlists. Press “up/down” to locate the cursor at the desired playlist and press “ok” to confirm selection. Finally locate the cursor at “ok” button to finish the operation. Press “cancel” to cancel the operation.
- Delete: Delete all the selected items
- Paste: Copy selected file to current directory.
Firstly select a file or a group of files in any directory, and go to destination directory, press “function” and select “paste”. “Paste” is only available after you have selected any files in some directory. If you select several groups of files in different directory, only the latest group of files will be copied.
- New folder: create a new folder
- Rename: Rename the current file or folder

9.4.4 File copy/transfer between network, PC and USB

The storage devices attached to CS-T60C include the internal HDD, the external USB device(through USB host) and the PCs on network(through wired Ethernet or WIFI dongle). CS-T60C supports file transfer between internal HDD, external USB device and network PC.

Access any directory on any storage device mentioned above. When the cursor locates at the desired file or folder, press “function” to pop up “function select menu”, select a file/folder or a group of files/folders. Go to destination directory, press “function” and select “paste”. “Paste” is only available after you have selected any files in some directory. If you select several groups of files in different directory, only the latest group of files will be copied.

9.4.5 Playback files on network neighborhood

Connect CS-T60C to a network through Wired (via 10/100 LAN, RJ45 port) Network Connections or wireless network (via WIFI dongle).

Access Music/Photo/All Files mode, select the first item “Network neighborhood” on the main content list. Press OK to confirm. The system will start to search network neighborhood automatically, this will take a few seconds. Then you can see all the PCs on the network and browse the shared files.

Before using the Network functions, please check the following items:

- 1) Enable NetBIOS over TCP/IP on your PC.

To enable NetBIOS over TCP/IP on Windows XP and Windows 2000:

- a) Click Start Control Panel - Network and Internet Connections- Network Connections.
- b) Right click the local area network connection and click Properties.

- c) Double click Internet Protocol (TCP/IP).
 - d) Click Advanced.
 - e) Click WINS.
 - f) Click the Enable NetBIOS over TCP/IP button.
- 2) Enable the guest account on your PC.
 - 3) Adjust the Windows Firewall settings on your PC.
 - a) Go to Start - Control Panel, and double-click the Windows Firewall applet.
 - b) Clear “Disallow exceptions”. If you check “Disallow Exceptions”, the Windows Firewall will block any connection attempts including those you have specifically allowed in the Exceptions settings.
 - 4) Share the folders on your PC which you wish to browse through CS-T60C. Grant accession permission to everyone.
 - 5) Modify the IP address of CS-T60C in Setting-Network setup if necessary.

10. Browse and manage recorded files

In the home menu, access “Recorded file”. A list of recorded files are displayed on the left of the screen. When the cursor locates at a file, you can see the preview of the clip on the right preview window and file information under the preview window.

You can manage the recorded files using “function select menu”. Refer to 9.4.3 for file management.

Note:

The recorded file is stored in “recorded” directory of partition “c” by default.

When you access “Recorded file” from home menu, you can only the recorded files stored on partition “c”.

If you choose to store the recorded files on other partitions of the internal hard disk or the external USB devices, you need to enter “Movie” or “All files” mode, select the destination device and go to “recorded” directory.

11. Recording

11.1 instant recording

1) Press “TV” to access the AV source. Make sure the TV system of AV source and CS-T60C are the same, for example, both are PAL system.

2) Press “REC” and a dialogue box of “recording setting” will show up so you can setup the recording path and recording quality (choose from high, medium and low quality). For the recording path, you can choose from internal HDD (c/d/e) and external USB device (USB-multimedia1). Don’t bother with settings if you find the default settings are just all right.

Tip: The default recording path is always “c”. And you can easily find the recorded files by selecting “Recorded Files” on the home menu if you choose the default path “c”. If you choose other path, you will need to go to

the destination on “Movie” or “All files” mode.

You can change setting of “record quality” every time you press “REC” but this setting cannot be remained for next time. To remain the setting of “record quality”, go to “Setting→Recording Setup”.

3) Press “OK” to start recording. When recording is going on, a symbol keeps being displayed on the left bottom corner of the screen.

4) Press “STOP” to stop recording.

Notes:

- When the recording is going on, you should only make limited operations including pressing “Vol+”, “Vol-”, “Mute”. If you press “Movie”, “Music”, “Photo” or “Home”, the system will not be able to access the AV source and recording will be terminated.
- When there is no space left in the recordable device, a special window “Hard disk is full or hard disk errors!” will appear and recording will be terminated. Press “OK” to exit this window.

11.2 Timer recording – Advanced Scheduler

- 1) Press “TV” to access the AV source. When it is already in AV source mode, you can ignore this step.
- 2) Press “REC list” and the Timer Record menu with/without schedule list appears. The Timer Record menu allows you to modify, remove, create recording schedules and view all schedule status and history.
- 3) Press “up/down” to select a schedule. Press “OK” and the schedule edit window will pop up.

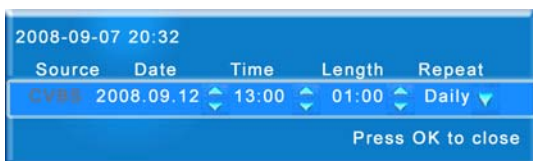
Timer record menu with schedule edit window

Source	Date	Time	Modify	Repeat	Status
1 CVBS	2008-09-05	1	Remove	Daily	Ready
2 CVBS	2008-09-08	1	New	Once	Ready
			Cancel		

- Modify: edit the selected schedule. Select “Modify” and press “OK” then the schedule setting window appears.
- Remove: remove the selected schedule. Select “Remove” and press “OK” to confirm.
- New: create a schedule. Select “New” and press “OK” then the schedule setting window appears.
- Cancel: exit the window. Select “Cancel” and press “OK” to confirm.

4) Press “REC list” or “stop/exit” to exit the Timer Record menu.

Schedule Setting Window



Source	The unit can support record CVBS only, so just remain the default setting.
Start Time (Date and time)	Enter the date and time at which the recording should be started.
Length	Enter the length of the recording.
Repeat	Select how often you want the schedule to record. Choose from Once, Daily and Weekly.
Press OK to close	Press “left/right” on the remote control to move between fields. Press “up/down” to adjust each setting. Press “ok” to confirm completing editing a schedule.

Notes:

- For timer recording, you must keep the set top box tuned into the appropriate channel and keep the set top box on or make it power on automatically at the specified time.
- For timer recording, CS-T60C can be in three status, power on or standby or power off.
 - 1) When CS-T60C is working on other modes like “Movie”, “Music”, “Photo”, “All files”, the system can automatically switch to “AV source” mode and start recording at the specified time.
 - 2) Press “standby” on the remote control, the system will exit and enter “standby” status. The system can automatically turn on and display home menu, then automatically enter “AV source” mode and start recording at the specified time.
 - 3) Press “standby” on the remote control then press the power button on the front panel, CS-T60C will be shut off and this will save more power than in standby status. The unit can automatically power on, turn on the system, display the home menu, then automatically enter “AV source” mode and start recording. Note that if you directly press power button on the front panel without pressing “standby” on the remote control, the system will not be able to automatically turn on and start recording.
- It is a must to set the local date and time correctly for timer recording. Refer to “Setup-System-Time”.
- When it is in recording status, you cannot access the Timer Record

menu.

- For timer recording, the record clips are stored on partition “c” by default.

12. Setting

The Setup menu allows you to configure the settings of system, video, audio, recording and network.

To enter the menu, select “Setting” from home menu. Press “left/right” to move the cursor. Press “ok” to pop up the options. When the cursor locates on the desired options, press “ok” to confirm selection.

1) System setup

- Menu language: English and Chinese
- Slideshow time: 0 Sec, 5 Secs, 10 Secs
- Skin type: the style of user interface. Classic Blue is available.
- Current time: current time of the system. Correct setting of current time is a must for timer recording.
- Firmware update: Press “OK” to update firmware. The player will search for Firmware Upgrade file. To ensure a smooth error-free upgrade process, transfer the firmware upgrade file to the internal HDD of CS-T60C before performing the firmware upgrade procedure. Do NOT turn off the unit or select any other command during the Firmware Upgrade Process.
- Default setting: reset all video settings
- Software Version: the current software version



2) Video setup

- TV system: PAL and NTSC
- Video output: CVBS and component
- Video resolution: 480i/576i, 480p/576p, 720p
- Aspect Ratio: 16:9, 4:3
- Aspect Ratio Converter: Full screen, Letter Box, Zoom

Full Screen 4:3: Adjusting widescreen film images by cutting off portions on two sides to suit the screen of a standard TV (4:3). Select when a standard TV (4:3) is connected.

Letter Box 4:3: Fitting the wide screen HDTV image (16:9) into a standard TV (4:3) creates the "letterbox effect" (black bars on top and bottom). Select when a standard TV (4:3) is connected.

16:9: Squeeze the 4:3 TV images horizontally to fit the 16:9 ratio of wide screen. Select when a 16:9 TV is connected.



3) Audio setup

SPDIF output: Off, RAW, PCM.

RAW is to be used when you have a receiver that can decode the signal, while PCM is to be used when your receiver does not have the ability to decode the signal. RAW is the preferred option, if you can't hear anything then switch to PCM or off.

4) Recording setup:

- Recording Quality: High, Medium, Low

5) Network setup:



13. Troubleshooting

Under no circumstances should you try to repair the system yourself, as this will invalidate the warranty. If a fault occurs, first check the points listed below before taking the system for repair.

TV no response

- Make sure that TV is powered on, and is in "Video" mode;
- Make sure that AV cable is connected properly;
- Make sure that the unit is correctly set up in "Video output" mode.

No sound or bad sound

- Make sure that audio cable is connected properly;
- Check whether the unit is in MUTE mode;
- Check whether the volume is set to the minimal level;
- Make sure that the audio output setting is correct.

No image or bad image

- Make sure that video cable is connected properly;
- Make sure that the color type of the unit and TV are matched.

The unit cannot be connected to PC

- Make sure that the unit is powered on;
- Make sure that USB cable is connected properly;
- Make sure that HDD is installed properly.

Remote control does not work

- Make sure that the battery of remote control is installed properly;
- Make sure that the battery is in good condition;
- Check whether remote control is too far from the unit, or control angle is not proper, or there is block between remote control and the unit.

Keys don't work properly

- In order to activate the reset, unplug the power supply cord for 10 seconds.