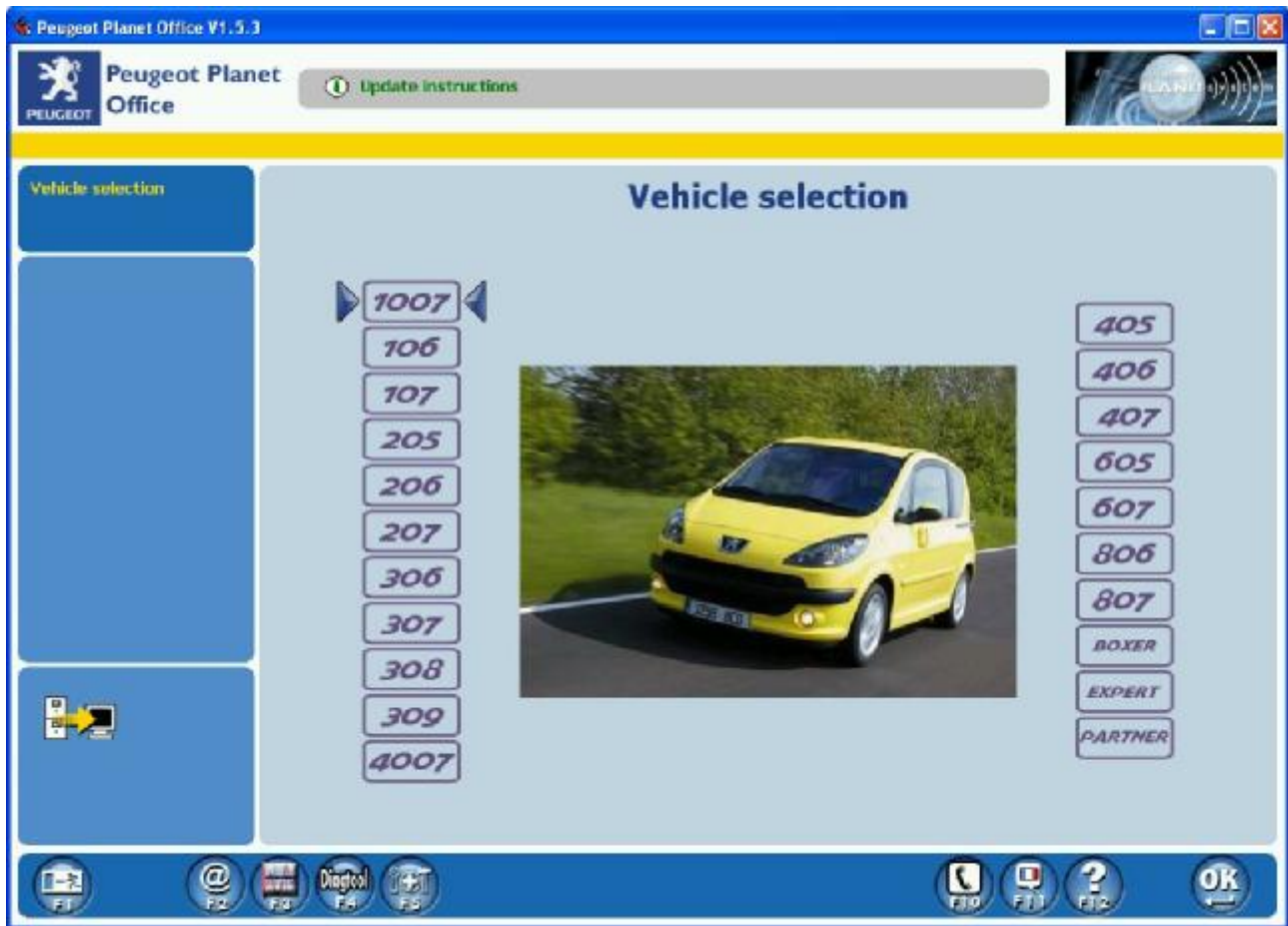


How to activate Peugeot Planet Office

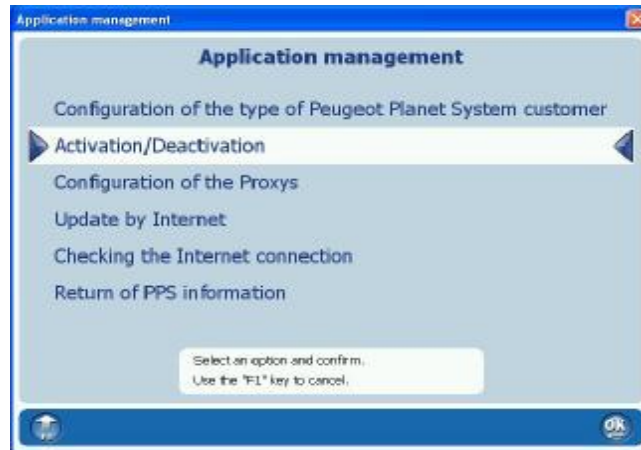
After Peugeot Planet Office (PPO) is installed, connect device to the PC then run the PPO software.
Without device connected PPO will not run!

If PPO asks to get internet updates answer **No**.

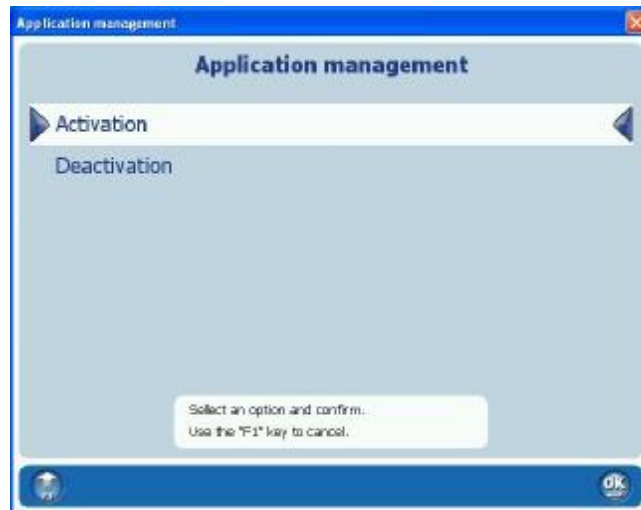
After this main screen should appear:



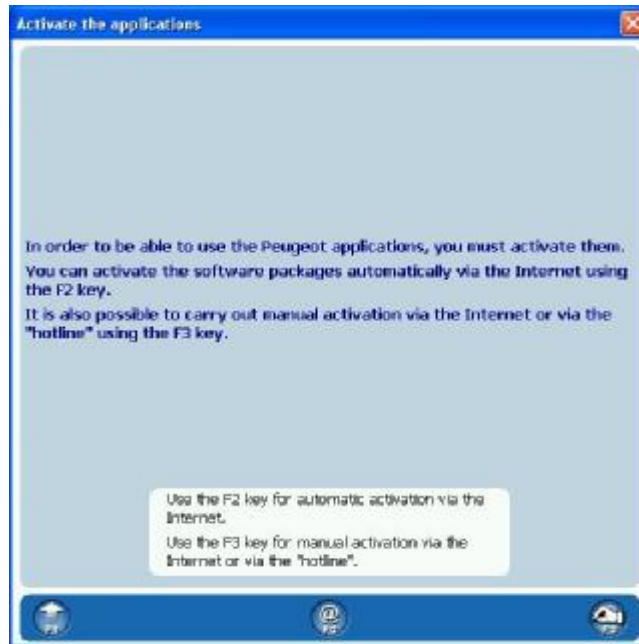
Press **F5**:



Select **Activation/Deactivation**, press **OK**:



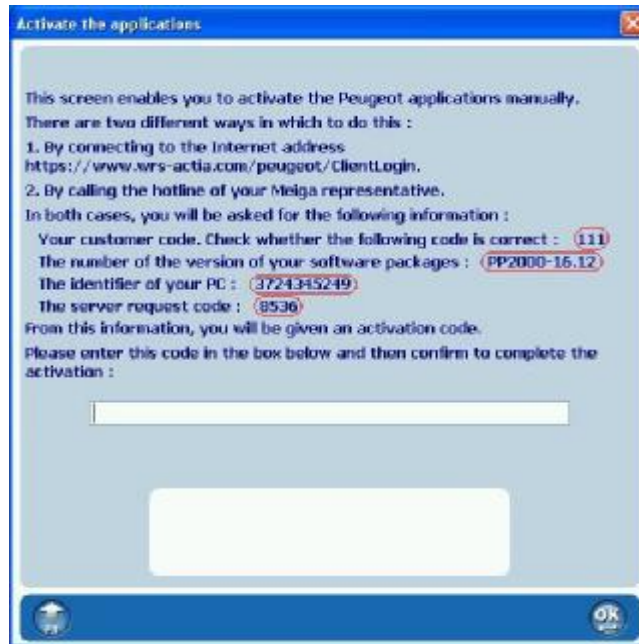
Select **Activation**, press **OK**:



Press **F3** for manual activation:



Find the serial number of your Lexia device (it is labeled on device, 7 digits) & enter it as your customer code. For this demonstration we will use **111**. Press **OK**. **Note: Do not enter 111 enter the real serial number from your device!**



In the window above information need for activation is shown. Please contact us & send us numbers marked with red, we will send you the correct activation code back. **Do not close this window until you receive the code from us, otherwise different server request code will be generated & code we send you will not match!**

Enter code you received from us & press **OK**. If code was ok then window will appear:



Press OK. Finished, your PPO is activated now!