

---

# Mini Matchbox DVR(6 in 1)

## User Manual

### Preface

Thank you for your purchase "Mini Matchbox DVR(6 in 1)" The Manual details the function of this machine, let you easily manipulate the full experience of this product for you to enjoy the value. Please read carefully before use of this Manual.

### Notes

1. The Mini Matchbox DVR(6 in 1) is a high-precision electronic products, please do not self-demolition, please do not change any part of the machine, otherwise the warranty null and void.
2. To avoid strong collisions, beat the DVR.
3. In the following environment to avoid the Mini Matchbox DVR(6 in 1) placement: high temperature, humid, dusty, powerful magnetic field and long-term exposure to strong sunlight under.
4. Screw can be used wet-dry cotton cloth gently wipe the Mini Matchbox DVR(6 in 1) case, no other chemicals used in cleaning solution.
5. The Mini Matchbox DVR(6 in 1) should not be subjected to micro-droplets and water splash.
6. Please Hope you use only manufacturer batteries, chargers and accessories. The use of any other types of warranty products will be in violation of regulations, and can be dangerous.
7. Please follow the relevant local environmental laws to dispose of abandoned machinery and accessories.
8. If you have any questions, please contact the Company Customer Service Center or contact the seller.

### Statement

1. Warranty in order to prevent data loss, it is recommended users safekeeping. Warranty if the damage caused by data loss, the Company shall not be responsible.
2. The Manual to the original version of this product as the standard for production, if the upgraded version of the functional operations of additions and deletions and changes, please refer to the corresponding CD-ROM version of the random or the corresponding version of the specification shall prevail.
3. Brochure picture is for reference only, product in order to prevail in kind.
4. This product is applicable to commercial office owners, teachers, students recording classroom training places, business negotiations, the case records of the athletes training, tourism, recreational activities, such as the super-essential products.

## Contents

### I. Product Introduction

1. Brief Introduction
2. Product specifications
3. Random Annex
4. Minimum computer requirements

---

5. And computer connections

## **II . Key functions and indicator description**

1. Buttons / slots introduced

2. Function model introduced

(1). Camera model

(2). Video mode

(3). TV-out mode

(4). USB mode

3. Light management

4. Remote control

5. Power Management

## **III、 Operating instructions**

1. Switch machine

2. Camera operator

3. TV-out operation

4. Video equipment

5. Mobile U disk

6. Other

## **IV、 Memory card**

## **V. Driver installation**

## **VI 、 Storm video software installation and Use**

### **1. Products**

1. Brief Introduction

---

"Mini Matchbox DVR(6 in 1)" is a multi-purpose, low power micro-digital camera, mold beautiful fashion, complete a powerful and easy to use simple and easy to carry. Support five million pixel camera, 30 VGA / QVGA video (synchronized video recording), video, TV output, U disk, TF card.

## 2. Product specifications

- 1): product size is: 48 \* 30 \* 13.5mm Net Weight: 39 grams;
- 2): the use of two million-pixel CMOS camera module with high-definition camera effects;
- 3): Video files: 640 \* 480 resolution, 30 frames / s camera documents: 2592 \* 1944 resolution;
- 4): video format: MJPEG, recommended player: Storm CD;
- 5): support for TV output, in film content playback on TV;
- 6): support network video chat with video chat software;
- 7): high sensitivity of the microphone, in the 64 to clear the square of the recorded sound, play without noise effects;
- 8): support to the 16GB TF card;
- 9): Support infrared remote control operation;
- 10): built-in high-capacity polymer lithium-ion battery, continuous 90-minute video, a random configuration can carry sufficient for charging;
- 11): USB 2.0 standard interface, no external power supply, video drivers with the network;
- 11): applies to any computer with USB interface and other electronic equipment, data read and write speeds of about 700K bytes / sec;
- 13): Support for XP / MAS OS / LINUX / VISTER and automatically identify the operating system, install the appropriate drivers, no need to manually install;

## 3. Random Annex

This product includes the following annexes:

- 1): remote control (a)
- 2): Chargers (1)
- 3): USB communication line (1)

- 4): TV output line (1)
  - 5): Lanyard (1)
  - 6): Statement (1)
  - 7): document CD-ROM drive (1)
  - 8): Certification (a)
  - 9): warranty cards (1)
4. Computer configuration requirements
- 1): Microsoft Windows 98/2000/ME/XP/MAC
  - 2): USB interface
  - 3): CD-ROM drive
  - 4): 40MB hard disk space
  - 5): 256MB Memory
5. Computer connections

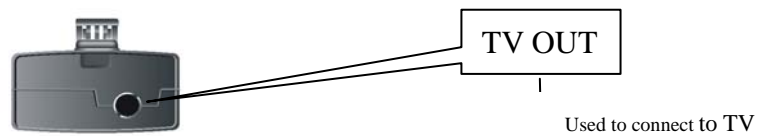
Connect the drive before the CD-ROM driver installation, the use of random attachment or 5P USB communication line as the local media with the computer connected to a square end of the USB communication line inserted in the machine's USB jack, the USB will be a rectangular Even the end of communication line of the USB interface on the computer.

**Note: It is necessary to switch a state in order to connect the computer.**

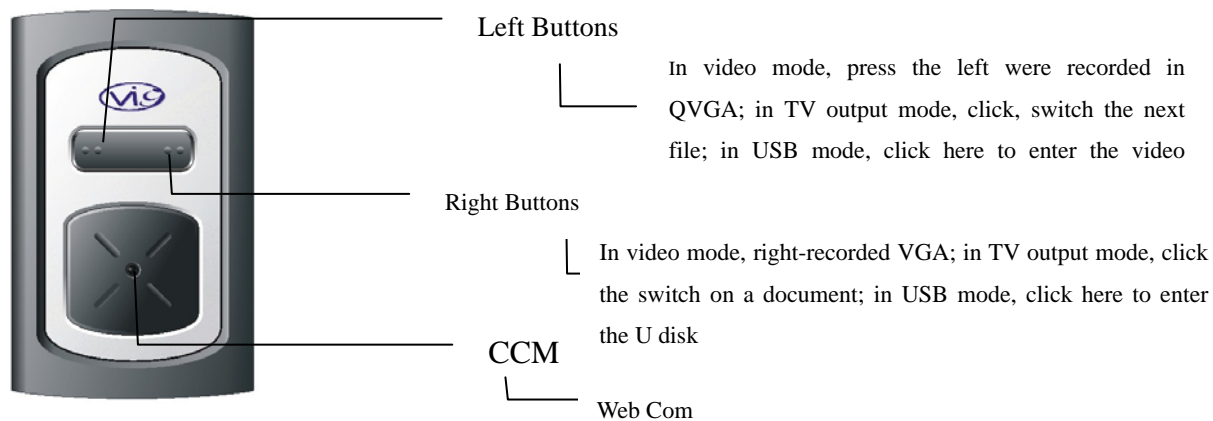
## 2、 Key functions and indicator description

### 1. Buttons / slots introduced

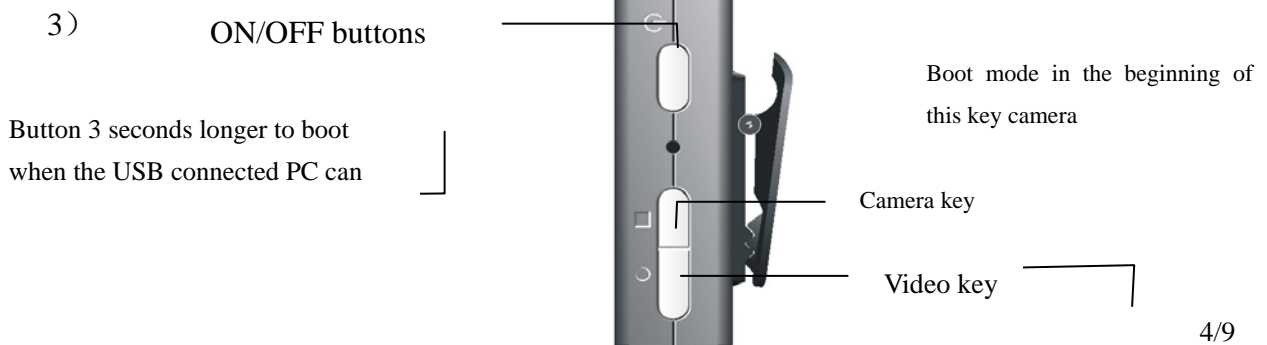
1)



2)

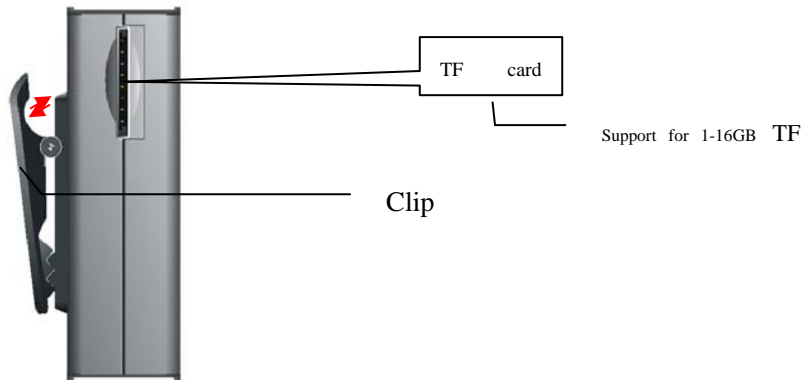


3)

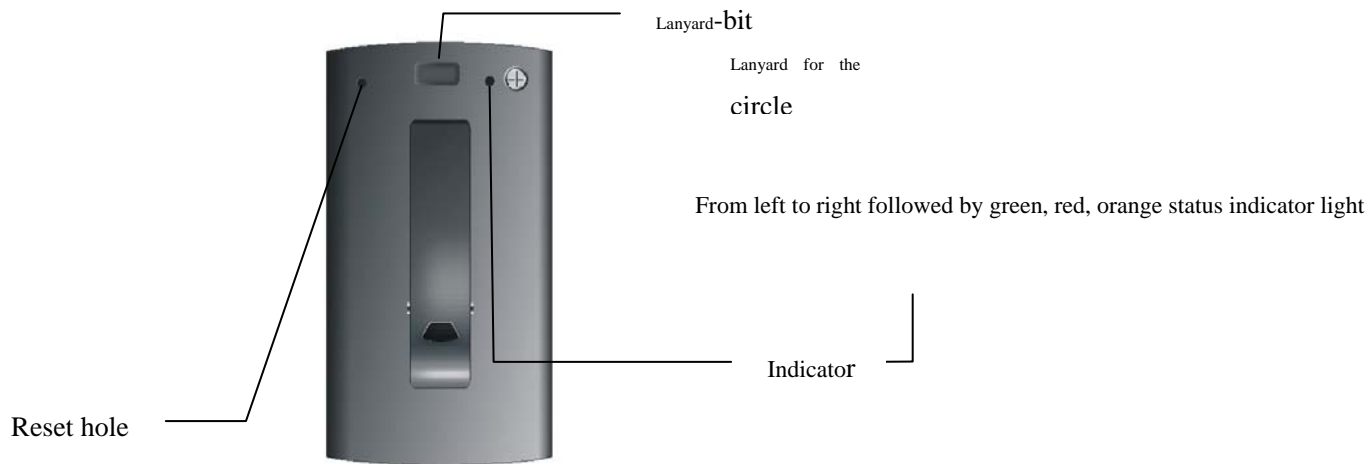


4)

In boot mode, this button simultaneously recording video.



5)



## 2. Function model introduced

### 1): camera mode:

After boot, without connecting lines, as well as TV-out USB line, the system model into the standby mode. In this mode button can be taken through the camera 5000000 pixels JPEG photos, and automatically saved to the TF card inside, pamphlets time shooting two seconds.

### 2): video mode:

After boot, without connecting lines, as well as TV-out USB line, the system model into the standby mode. In this mode through the key can take VGA video with sound Size MJPEG document camera button again to stop the video.

### 3): TV-out mode:

Does not boot after USB line to connect, the connection TV output line, will automatically enter the TV-out mode, support for PAL and NTSC standard two. In this mode ,playback through your television screen photographs or image files.

### 4): video mode:

---

Boot not connected TV in the case of output lines to connect USB to PC, switch mode button to enter the video equipment. This mode access video equipment by opening the video chat software .

5): the mobile U disk mode:

Boot not connected TV in the case of output lines to connect USB to PC, switch right into the U disk mode. This mode can be achieved each copy document.

### 3. Light management

The host have four lights, in which the three side-by-side green, red, orange indicator lights for the operation; the other side of a red indicator light for power management.

On / off, the green, red, orange lights are all bright, and some release button when the lights go out you can normally switch the machine;

After booting the default mode for the video, when the green, red, orange lights out; camera mode, the red light, green light, orange light out. Video when the green light flashes, when the red light camera will be out until after the completion of filming will become bright.

If inserted after boot television output line, when the orange light, green light, red light out, said to enter the TV-out mode, in this mode, according to documents about the time switch lantern orange button with the flash.

USB connection, the default mode for MSDC U disk, this time for the green light, red light, orange light out, contrary to the network mode for video, red, orange light, green light out.

When a USB connection or have the charger, the red light or flashing lights, to judge just based on the connection when the president of the bright, if we find the need to charge that started blinking, has begun to charge; charge for long after the completion of the restoration of light, until the need to charge so far.

USB or charger is not connected when the red lights went out.

### 4. Remote control

After boot you can use to wear the remote control to operate the. With the definition and key features as follows:

power	up	menu
left	ok	right
video	down	picture

By POWER button turned off, by the beginning VIDEO video, video light will be blinking at this time; VIDEO once again by the end of the video. PICTURE began to take pictures by photographing the process of light out at this time is the interception of data, do not shake to avoid

fuzzy pictures. After the camera lights brighten the end of filming again.

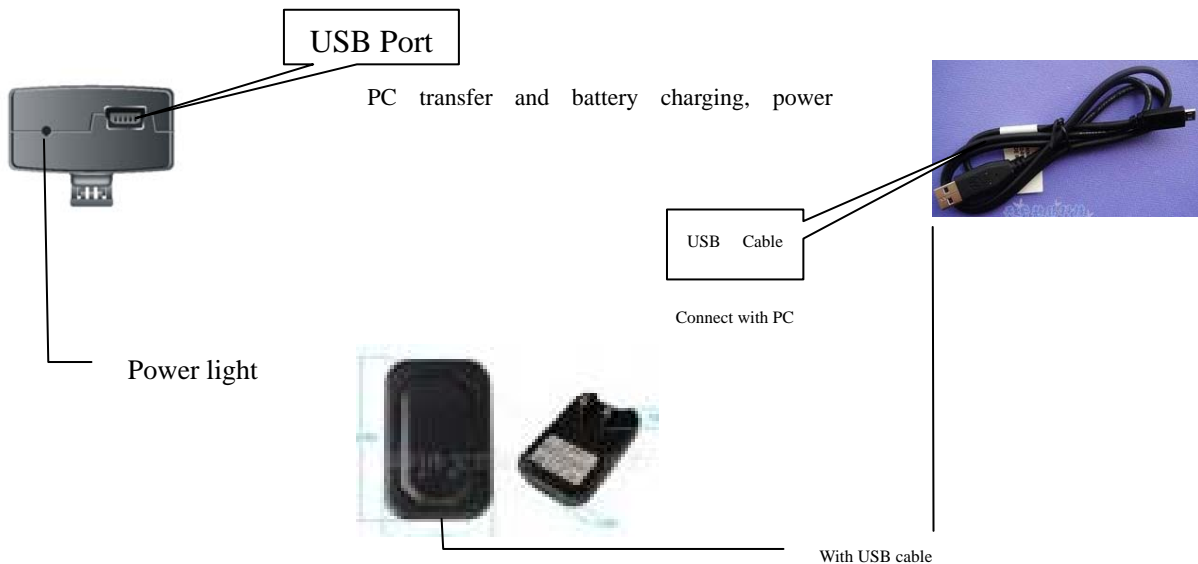
TV OUT line connected, you can switch on the television about key files on the playback, press OK button to play the current selected files; press MENU key to enter the settings menu interface, this could be the frequency of the power, time, format, etc. to operate .

Using UP-DOWN, LEFT-RIGHT to choose; confirm with OK; then MENU to exit this mode.

VIDEO playback process can be launched by the OK button halfway.

## 5. Power Management

- 1) It could be the Mini Matchbox DVR(6 in 1) through the USB line to connect to the computer's USB port;
- 2) the use of random Annex USB line to connect to the charger for the charge;



**Note: When charging, the power indicator light is flashing red lights, the battery is full, the power indicator light longer.**

## 3. Instructions and Notes

### 1. On / off

Long press on / off button 3 seconds (to the bright light from the individual all-out time) on the boot completed, the default video mode to enter. Boot again by the key switch will automatically shut down machines. In addition, if not three minutes for the operation of equipment is automatically turned off. The need for a long time to boot by a period of time, or cannot drive to open at the same time if too long, will that open the boot and then press the key left in the implementation of the shutdown action.

### 2. Camera operator

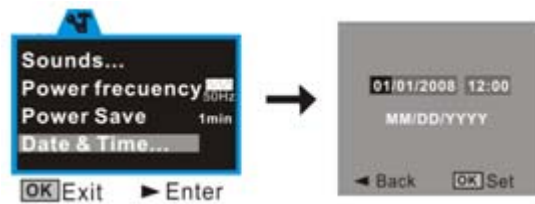
---

Our equipment is the software used in Anti-Shake technology, the need to take pictures when on the one hand, careful not to tremor, on the other hand do not always hold down the button. Not going to take pictures during the plug TF card, causing an error to write data. In this mode there is no right-left response keys cut by mode to VIDEO mode.

### 3. TV-out operation

TV line connections when the need to pay attention to video and audio signal lines, not to take anti-a. At the same time, the need to adjust TV to AV2 mode, and select an equipment consistent with standard television.

In this mode press camera button will enter a set menu, as shown below.



Equipment to provide power to choose the frequency, time calibration, options and standard TV output formatting functions.

After entering the main interface through the left switch for more than four-phase content, as well as by right into the next choice, after entering

Flip through the left-down options, select the display mode highlight key table according to the entry into force is set up. Again by the camera

Button launch the set up menu.

### 4. Video equipment

This mode is mainly used for video chat network, USB connection, press left to enter this mode, the computer will be identified at this time of the video equipment, and then open the chat tool when the device will be able to choose the video. From the software when you shut down, and then remove the USB. In the use of this model line from time to time due to USB issues will have the effect of some unstable, it is not recommended to extend the line to use with the USB cable.

### 5. Mobile U disk

U disk model is used in USB2.0, more than in the Win98 operating system in order to avoid a sudden this mini digital video camera from the USB port off caused by data loss, please double-click the bottom right corner of Windows desktop "Safely Remove Hardware" icon, according to their step-by-step prompts to complete the security removed from the computer USB.

### 6. Other

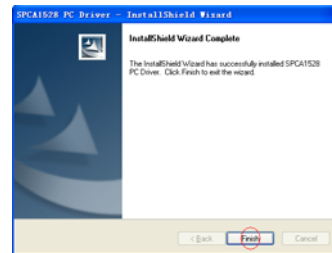
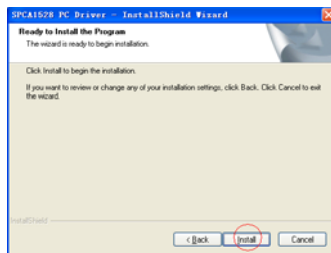
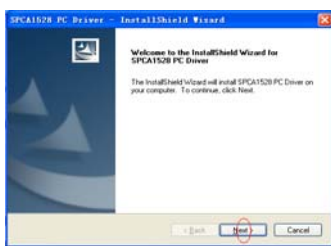
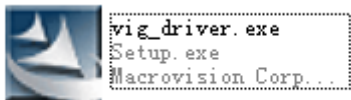
In the process of mode switching, the system will take time to make switching action, when in operation, therefore, do not have to continuous operation of the keys, so easily lead to misoperation. Key post in the corresponding normal light

Further follow-up operation.

Low power consumption may be opened when the machine cannot, such a situation, please connect the USB charger or try, if you boot, you need to re-use charge.

#### 4. Memory card

Mini digital video camera to support the XP / MAS OS / LINUX / VISTER and automatically identify the operating system without the use of U disk. The micro-digital camera memory card data to be high-speed 2.0 USB interface and connect the computer to randomly attachment CD-ROM CD-ROM into your computer, install the appropriate driver, no external power supply, documents show the computer screen.

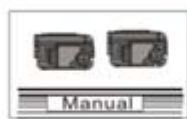


#### VI. Storm video software installation use

Random attachments to CD-ROM into your computer.  
User CD-ROM Click "Storm video" to install.



Camera



User's Manual



CD



USB Cable



TV cable