



## Test Report

No.: GZ0906056406/CHEM

Date: JUN 24, 2009

Page 1 of 5

CHANGJIANG CONNECTORS CO., LTD  
ZHU'AO INDUSTRIAL PARK NO.E BUILDING GUSHU VILLAGE BAO'AN DISTRICT SHENZHEN CHINA

The following sample(s) was/were submitted and identified on behalf of the applicant as TERMINAL

SGS Job No. : SZ11916724  
SGS Internal Reference No. : 3.2  
Client Reference Information : See Remark  
Date of Sample Received : JUN 19, 2009  
Testing Period : JUN 19, 2009 TO JUN 24, 2009

Test Requested : Selected test (s) as requested by client.

Test Method : Please refer to next page(s).

Test Result(s) : Please refer to next page(s).

Signed for and on behalf of  
SGS-CSTC Ltd.

Sunny Huang  
Lab Sr. Supervisor

This document is issued by the Company under its General Conditions of Service printed overleaf or available on request and accessible at [http://www.sgs.com/terms\\_and\\_conditions.htm](http://www.sgs.com/terms_and_conditions.htm). Attention is drawn to the limitation of liability, indemnification and jurisdiction issues defined therein. Any holder of this document is advised that information contained hereon reflects the Company's findings at the time of its intervention only and within the limits of Client's instructions, if any. The Company's sole responsibility is to its Client and this document does not generate parties to a transaction from exercising all their rights and obligations under the transaction documents. Any unauthorized alteration, forgery or falsification of the content or appearance of this document is unlawful and offenders may be prosecuted to the fullest extent of the law.  
Unless otherwise stated, the results shown in this test report refer only to the sample(s) tested. This document cannot be reproduced except in full, without prior approval of the Company.



SGS-CSTC Standards Technical Services Co., Ltd  
Guangzhou Industrial Chemical Laboratory

198 Kazhu Road, Sointech Park, Guangzhou Economic & Technology Development District, Guangzhou, China 510663 | (86-20) 82155555 | (86-20) 82075125 | www.cn.sgs.com  
中国·广州·经济技术开发区科学城科珠路198号 邮编: 510663 | (86-20) 82155555 | (86-20) 82075125 | e: sgs.china@sgs.com

Member of the SGS Group (SGS SA)

**Test Results:**

Description for specimen 1 : Brassy metal

**Elementary Analysis**

Test Item(s)	Unit	Test Method (Reference)	Result	MDL
Cadmium (Cd)	mg/kg	IEC 62321: 2008, ICP-OES	N.D.	2
Lead (Pb)	mg/kg	IEC 62321: 2008, ICP-OES	12	2
Mercury (Hg)	mg/kg	IEC 62321: 2008, ICP-OES	N.D.	2
Hexavalent Chromium (CrVI) by boiling water extraction	-	IEC 62321: 2008, UV-Vis	Negative	◇

**Note:**

1. mg/kg = ppm
  2. N.D. = Not Detected (< MDL)
  3. MDL = Method Detection Limit
  4. ◇ = Spot test:
    - Negative = Absence of CrVI coating, Positive = Presence of CrVI coating;
    - (The tested sample should be further verified by boiling water extraction method if the spot test result is negative or cannot be confirmed.)
- Boiling water extraction:
- Negative = Absence of CrVI coating
  - Positive = Presence of CrVI coating; the detected concentration in boiling water extraction solution is equal or greater than 0.02 mg/kg with 50 cm<sup>2</sup> sample surface area.
- Storage conditions and production date of the tested sample are unavailable and thus results of Cr(VI) represent status of the sample at the time of testing.
5. "-" = Not regulated

This document is issued by the Company under its General Conditions of Service printed overleaf or available on request and accessible at [http://www.sgs.com/terms\\_and\\_conditions.htm](http://www.sgs.com/terms_and_conditions.htm). Attention is drawn to the limitation of liability, indemnification and jurisdiction issues defined therein. Any holder of this document is advised that information contained hereon reflects the Company's findings at the time of its intervention only and within the limits of Client's instructions, if any. The Company's sole responsibility is to its Client and this document does not generate parties to a transaction from exercising all their rights and obligations under the transaction documents. Any unauthorized alteration, forgery or falsification of the content or appearance of this document is unlawful and offenders may be prosecuted to the fullest extent of the law.

Unless otherwise stated, the results shown in this test report refer only to the sample(s) tested. This document cannot be reproduced except in full, without prior approval of the Company.



**Remark:****TERMINAL(Brass/Phosphor bronze)**

A0501,A0502,A1001,A1002,A1003,A1004,A1005,A1006,A1007,A1008,A1201,A1251,A1252,A1253,A1254,A1255,A1256,A1257,A1258,A1270,A1271,A1272,A1273,A1501,A1502,A1561,A1562,A2001,A2002,A2003,A2004,A2005,A2006,A2007,A2008,A2009,A2010,A2011,A2012,A2013,A2014,A2361,A2362,A2501,A2502,A2503,A2504,A2505,A2506,A2507,A2508,A2509,A2510,A2512,A2513,A2514,A2515,A2516,A2517,A2541,A2542,A2543,A2544,A2545,A2547,A2549,A2550,A3501,A3502,A3961,A3962,A3963,A3964,A3965,A3966,A4001,A4001A,A5001,A5081,A5082,A5083,A6525,A7501,A7801,A7921,A13001,A13002,A1188,A21201,B1000,B1001,B1251,B1501,B1502,B2011,B2012,B2512,B2513,B2541,B3951,B3952,B3961,B1401,B1601,B1602,B1603,B1801,B1802,B1803,B1804,B1805,B1806,B1807,B1808,B1809,B2401,B3201,B3202,B3203,B3204,B3205,C1301,C1581,C1801,C2003,C2020,C2361,C2501,C2504,C2521,C3030,C3961,C3962,C3963,C4140,C4201,C4501,C4801,C5030,C5081,C6001,C6201,C6202,C6500,C8381,D0801,D1000,D1271,D1271,D2541,D3961

This document is issued by the Company under its General Conditions of Service printed overleaf or available on request and accessible at [http://www.sgs.com/terms\\_and\\_conditions.htm](http://www.sgs.com/terms_and_conditions.htm). Attention is drawn to the limitation of liability, indemnification and jurisdiction issues defined therein. Any holder of this document is advised that information contained hereon reflects the Company's findings at the time of its intervention only and within the limits of Client's instructions, if any. The Company's sole responsibility is to its Client and this document does not generate parties to a transaction from exercising all their rights and obligations under the transaction documents. Any unauthorized alteration, forgery or falsification of the content or appearance of this document is unlawful and offenders may be prosecuted to the fullest extent of the law.

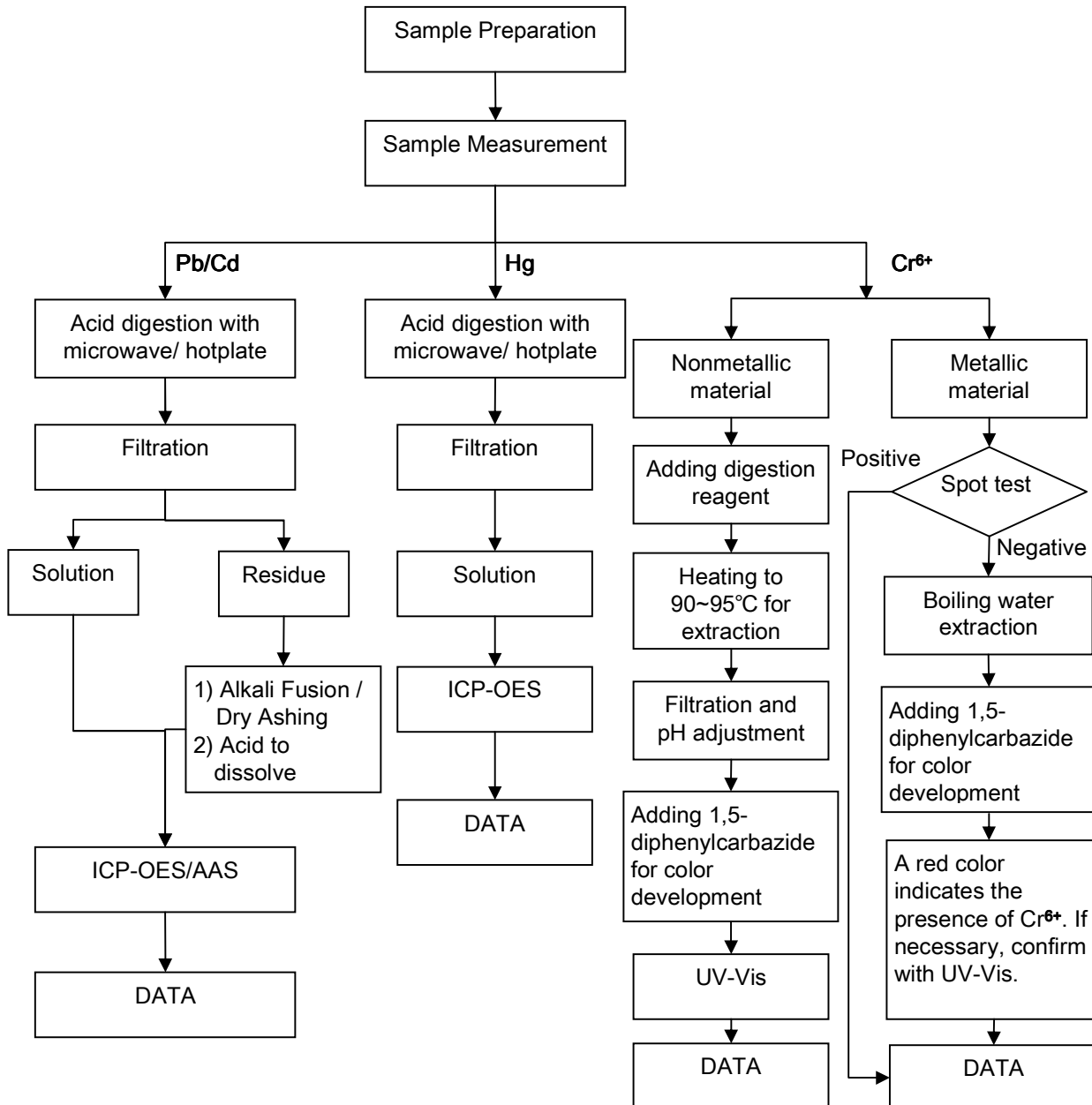
Unless otherwise stated, the results shown in this test report refer only to the sample(s) tested. This document cannot be reproduced except in full, without prior approval of the Company.



### ATTACHMENTS

#### Testing Flow Chart

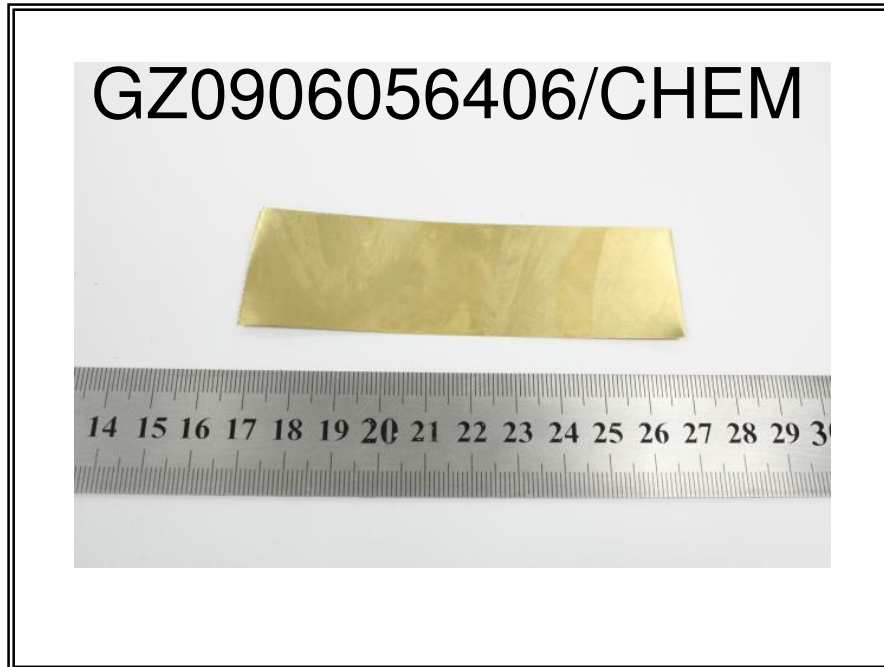
- 1) Name of the person who made measurement: Luke Xu / Lily Lee
- 2) Name of the person in charge of measurement: Adams Yu / Leo Wang
- 3) These samples were dissolved totally by pre-conditioning method according to below flow chart (Cr<sup>6+</sup> test method excluded).



This document is issued by the Company under its General Conditions of Service printed overleaf or available on request and accessible at [http://www.sgs.com/terms\\_and\\_conditions.htm](http://www.sgs.com/terms_and_conditions.htm). Attention is drawn to the limitation of liability, indemnification and jurisdiction issues defined therein. Any holder of this document is advised that information contained hereon reflects the Company's findings at the time of its intervention only and within the limits of Client's instructions, if any. The Company's sole responsibility is to its Client and this document does not generate parties to a transaction from exercising all their rights and obligations under the transaction documents. Any unauthorized alteration, forgery or falsification of the content or appearance of this document is unlawful and offenders may be prosecuted to the fullest extent of the law. Unless otherwise stated, the results shown in this test report refer only to the sample(s) tested. This document cannot be reproduced except in full, without prior approval of the Company.



Sample photo :



SGS authenticate the photo on original report only

\*\*\* End of Report \*\*\*

This document is issued by the Company under its General Conditions of Service printed overleaf or available on request and accessible at [http://www.sgs.com/terms\\_and\\_conditions.htm](http://www.sgs.com/terms_and_conditions.htm). Attention is drawn to the limitation of liability, indemnification and jurisdiction issues defined therein. Any holder of this document is advised that information contained hereon reflects the Company's findings at the time of its intervention only and within the limits of Client's instructions, if any. The Company's sole responsibility is to its Client and this document does not generate parties to a transaction from exercising all their rights and obligations under the transaction documents. Any unauthorized alteration, forgery or falsification of the content or appearance of this document is unlawful and offenders may be prosecuted to the fullest extent of the law. Unless otherwise stated, the results shown in this test report refer only to the sample(s) tested. This document cannot be reproduced except in full, without prior approval of the Company.

