

## UNIVERSAL CHIP RESETTER

The price of the original EPSON ink cartridge is expensive. How to decrease and save the cost of printing is our concern. The ink level of EPSON intelligent cartridge is recorded in the IC. It accurately records and controls the ink level. It can not be reused only by refilling the empty ink cartridge. This results in the high expense.

**UNIVERSAL CHIP RESTTER** can reset the IC in the Epson intelligent ink cartridges, and does not change the property of the cartridge. Then the empty cartridge to be reset and refilled to full can be reused after the ink is refilled.

**UNIVERSAL CHIP RESTTER** is versatile. It will automatically identify the cartridge model and detect the chip on the cartridge is in a good state or not, then reset the chip (both old and new types). It is the first product that is compatible with most of the Epson intelligent Ink Cartridges in the market. It can also reset some unoriginal ink cartridges.

You will get the ability to refill/reset the following ink cartridges with built in IC: T007/T008/T009/T015/T016/T017/T018/T026/T027/T028/T029/T036/T037/T038/T039/T040/T041/T0321~324/T0421~424/T0331~336/T0341~348/IC1BK13/IC5C L13/T0431/T0441~444/T0461/T0472~474/T0481~486/T0491~T0496/T0540~549/T0551~554/T0557/T0561~564/T0591~599/T5591~5596/T057/T058/T0601~0604/T0611~614/T0631~634 etc. And all updated model.

It allows you to completely recharge the ink cartridges for the following printer models:

Epson Stylus Photo

780/785EPX/790/810/820/830/870/870LE/875DC/875DCS/890/895/915/925/1270/1280/1290/2000P/950/2100/2200/PM740C/RX200/300/500/600/R210/310/353/510/R800/R1800/RX420/RX425/R2400/RX700 and

Stylus

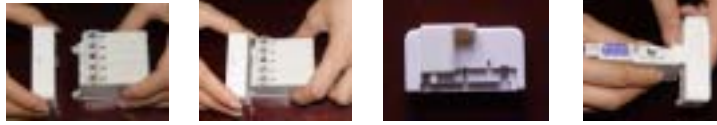
C41/C42/C43/C44/C45/C46/CX1500/C50/C60/C61/C62/C63/C64/C65/C66/C67/C68/C70/C80/C82/C84/C85/C86/C87/C88/D88/DX3800/DX3850/DX4800/CX3100/CX3200/CX3700/CX3800/CX3810/CX4100/CX4200/CX4700/CX4800/CX6300/CX6400/CX6500/CX6600/CX5100/CX5200/CX5300/CX5400/RX430/ and Color 680/777/777i etc.



**Main unit**

## OPERATION

As shown in the below figure, some special notch is designed for different Epson ink cartridges in the resetter. The pins in the resetter should tightly contact the terminal in the IC of the cartridge as the left-bottom figure. After a few seconds, the LED indicator will light up and flash about 3~4 seconds in red, if the LED turned into green color, it means the resetting operation has been successfully completed, and the chip is in a good state; if the LED turned into red color, it means that the chip on the cartridge is abnormal. After reset, you refill the cartridge with ink and mount the cartridge in the printer.



## TROUBLESHOOTING :

1. The LED in the universal chip resetter does not flash/turn green.  
Causation:
  - a). The pins do not contact well with the terminal of the IC in the cartridge.
  - b). The ink cartridge is not the original Epson ink cartridge or unlike the design of the Epson.
2. The quality of printing is not good.  
Causation:
  - a). During refilling, some air has entered into the ink cartridge. To avoid this, let the cartridge rest for about 24 hours.
  - b). The quality of ink is not good.

### **How to reset and refill the C70/C80/950/2100/2200/C63/65/67/87/R200/R210 etc. ink cartridge:**

1. Fix the plate A or B in the unit as above figure.
2. The pins in the unit should contact the terminals of the cartridge tightly as above figure.
3. Then the LED in the unit will flash in 3~4seconds and turn into green color..
4. The reset is finished.  
Cartridge is now ready for refilling with ink.