

PWS-SERIES – THE RATIONAL CHOICE.

DISTRIBUTOR:
Easycom Industrial Co.,Ltd.
Tel:+86-20-38473560
Fax:+86-20-38473550
<http://www.gzeasycom.com>
Email: info@gzeasycom.com



The rational choice

Operator terminals matching your specific needs

The PWS-series offers valuable HMI functionality at an affordable level. The series include keypad and touch screen interfaces and is available in five different sizes from 3 to 10.4 inches. Offering three levels of functionality - Standard, Plus and Network – the PWS-series enables you to select and pay for what level of HMI technology you need.



Configuration software for the PWS-terminal

The ADP software is a versatile and intuitive HMI configuration software. It has been created with users in mind and is ideal for machine builders and system integrators. With flexible tools that allow projects to be created in minutes, ADP is the perfect software to create simple or complex projects. The configuration software is available free of charge on www.beijerelectronics.com.

Screen management

The "Screen Manager" function makes project management easy and enables the configurator to always oversee the entire project. It is possible to select between thumbnail and detailed zoomed views, allowing for dynamic screens to be created and viewed.

- Ideal for project cutting and pasting, browsing, editing and co-ordinating the operator terminal screens
- Ensures fast and easy project creation

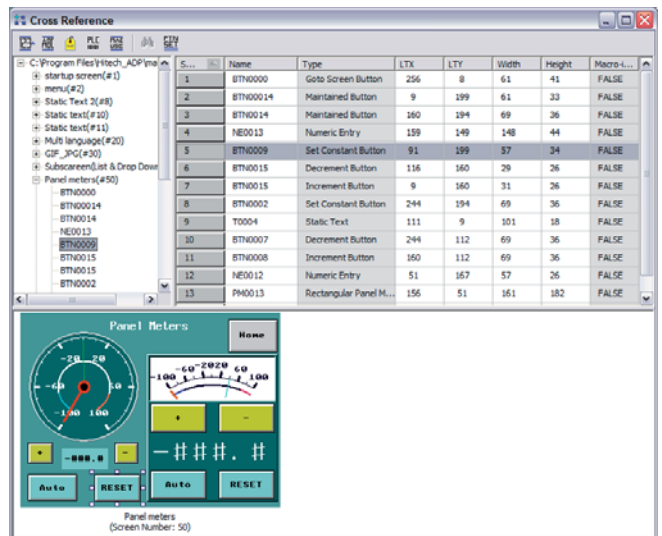
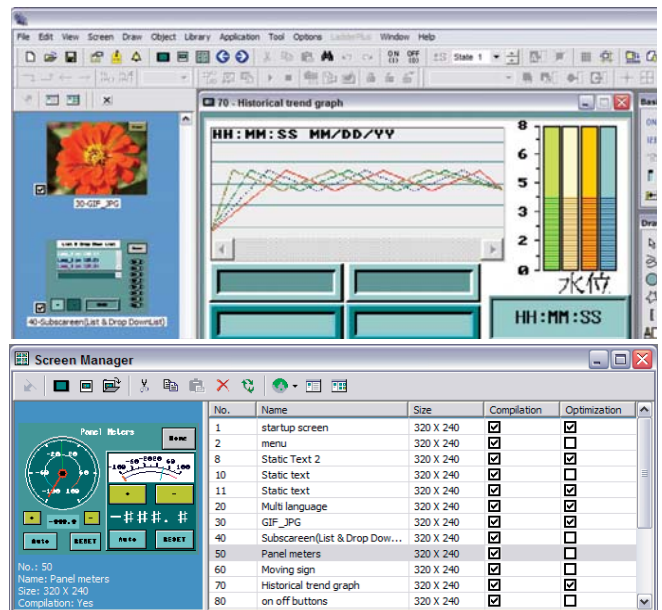
Cross references

"Cross Reference" is a feature that enables the configurator to easily handle project tags, objects and signals. These can quickly be located and listed to get an overview of where and how they are used. If data has to be changed, it can be made in the tag list and the data will then automatically be changed everywhere else in the project.

- The list has up to 3 windows, giving a complete project overview
- Sort the Cross Reference list by screen number, screen name, tag name or controller address
- Locate objects and change parameters directly from the list

All Windows™ fonts supported

Since the ADP software is based around the Windows™ operating system, a font library with up to 16 different fonts can be defined, exported and imported.



Off-line and on-line simulation

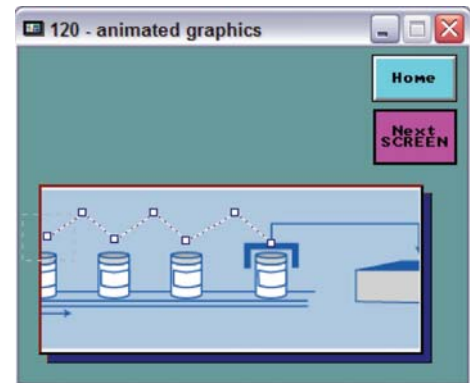
In order to save valuable time and money at on-site commissioning, The ADP software provides powerful "Off-line and On-line Simulation". This allows for the HMI project to be thoroughly tested either just on a PC, or by combining the HMI with a PC to comprehensively test HMI and controller reactions, communications etc.

- Off-line simulation allows the developer to quickly test the entire project and verify the overall functionality of screens and alarms
- On-line simulation proves the communication and the functionality of the host controller, such as a PLC or inverter

Animated graphics

The graphic handling in the PWS-series is developed with both the configurator and the user in mind. The animated graphics allow a variety of graphic possibilities with only the configurator's imagination being the limit.

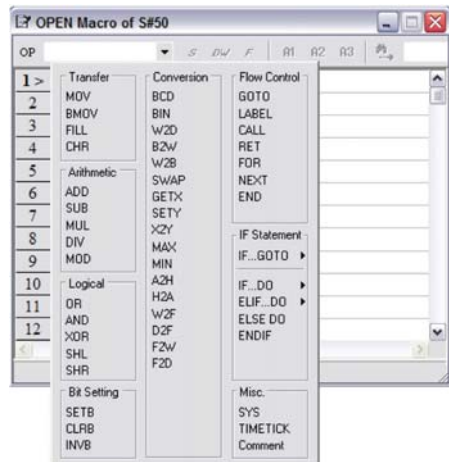
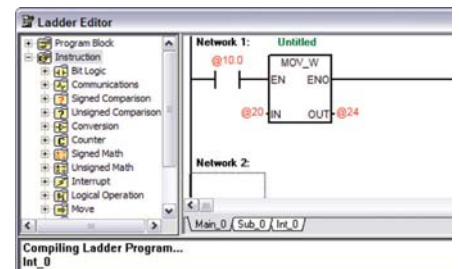
- Import graphic formats such as Bitmaps, JPEG, GIF and AutoCAD™ files (*.bmp, *.jpg, *.gif, *.dwg, *.dxf)
- Supports animated gif images for complex and flexible screen creations
- Graphics can be moved in predefined paths or freely controlled by the host controller to maximize screen space
- Scrolling text can be used allowing long text strings to be displayed



Ladder or macro functionality

The ADP software saves valuable time by providing ready-made modules for e.g. arithmetic calculations, logical operators and bit settings. These can easily be linked to each other or to other data within the project using ladder or macro functionality.

- Screen open macro
- Screen close macro
- Cyclic macro
- Initial application macro
- Clock macro
- Macros triggered by digital signals
- Sub-macros that can be triggered from other macros



PWS6300



PWS6400



PWS6500



PWS6600



PWS6620

Communication drivers

To accompany this inspiring range of HMIs is a range of free of charge communication drivers. This increasing list of drivers totals over a 100 and can be used for connecting the HMIs to various automation equipment such as PLCs, inverters, and servo controllers. Main worldwide brands such as Siemens, Omron and Allen Bradley are already included and new drivers are continuously being developed and updated.

Multi-language support

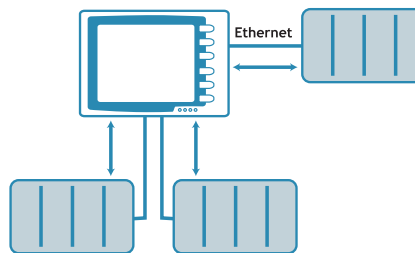
Making it easy for manufacturers who export all over the world, multi-language support allows the configurator to develop projects that can be used basically anywhere. With this setup within the HMI, to change languages is just a switch away. The language can also be changed during normal operation so that each operator can decide what language to use.

- Develop the application in up to 5 different languages
- Switch languages freely during normal operation

Multi-channel communication

Multi-channel communication is a unique feature that allows a different controller to be connected on each serial or Ethernet port. This flexible communications solution not only saves on buying multiple HMIs, but also removes the need for expensive protocol converters.

- Connect a controller to each available port either via serial or Ethernet connection
- Move values between the drivers via macros
- Use values from several controllers in calculations



File protection

Protecting the application from unauthorized upload and download is essential in today's manufacturing world. The "File Protection" feature ensures that only authorized users can access sensitive information.

- Impossible to upload the protected application from the terminal without the correct password



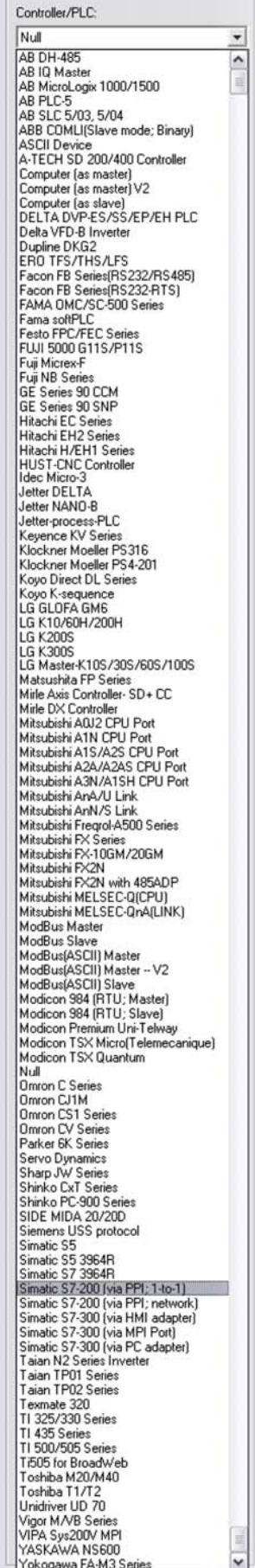
PWS6700



PWS6800



PWS6A00



The list of drivers is continuously updated.

PWS-series overview



	PWS6300-S	PWS6400F-S	PWS6500S-S	PWS6600S-S	PWS6600S-P	PWS6600C-S	PWS6600C-P	PWS6600C-N
LCD Type	Mono STN LCD	Mono STN LCD	Mono STN LCD	Mono STN LCD	Mono STN LCD	Mono STN LCD	Color STN LCD	Color STN LCD
Screen size	3" (diagonal)	3.3" (diagonal)	4.7" (diagonal)	5.7" (diagonal)				
Display resolution	160 x 80	240x240	240 x 128	320 x 240	320 x 240			
Brightness (cd/m2)	35	110	110	110	110			180
CPU	32 bits RISC	32 bits RISC	32 bits RISC	32 bits RISC	32 bits RISC			32 bits RISC
Contrast adjustment	Via VR	Via touch panel	Via touch panel	Via external keyboard (sold separately)	Via touch panel			Via touch panel
Display colors	16 shades of gray	16 shades of gray	16 shades of blue	16 shades of blue	16 shades of blue			256 colors
Back light type	LED	LED	CCFT	CCFT	CCFT			CCFT
Back light life	50,000 hours	10,000 hours	50,000 hours	50,000 hours	50,000 hours			50,000 hours
Operation Status LED	PWR & COM2 LEDs	PWR & COM1 LEDs	PWR & COM1, COM2 LEDs	PWR & COM1, COM2 LEDs	PWR & COM1, COM2 LEDs			PWR, COM1, COM2, Ethernet LEDs
Touch screen	—	Analog	Analog	Via external keyboard (sold separately)	Analog			Analog
Touch screen (number of times)	—	> 1,000,000	> 1,000,000	—	> 1,000,000			> 1,000,000
Keypad	16 mechanical switches	—	—	128	1 Menu key and 5 user-defined function keys (F1—F5)			
Application Flash ROM	4MB	4MB	4MB	4MB	4MB			4MB
RTC (w/rechargeable lithium battery)	Yes	Yes	Yes	Yes	Yes			Yes
Data/Recipe	—	—	—	—	—			512KB
Data storage (CF card)	—	—	—	—	—			—
COM1	—	9-pin female (RS232/RS422/RS485)	9-pin female (RS232/RS485)	9-pin female (RS232/RS485)	9-pin female (RS232/RS485)			9-pin female (RS232/RS485)
COM2	9-pin female (RS232/RS422/RS485)	—	9-pin female (RS422/RS485)	9-pin female (RS422/RS485)	25-pin female (RS232/RS422/RS485)			25-pin female (RS232/RS422/RS485)
COM3	—	—	—	—	—			—
USB Host	—	—	—	—	—			—
USB Device	—	—	—	—	—			—
Multi-functional port	—	—	—	—	—	26-pin connector for printer	—	26-pin connector for printer
Ethernet	—	—	—	—	—	—	Yes	—
Certification	CE	CE	CE	CE	CE			CE
External dimensions (mm)	173.0 (W) x 105.5 (H) x 51.8 (D)	96.0 (W) x 96.0 (H) x 40.6 (D)	170.3 (W) x 102.6 (H) x 45.3(D)	195.0 (W) x 145.0 (H) x 59.1 (D)	195.0 (W) x 145.0 (H) x 59.1 (D)			185.8 x 135.8
Cut-out dimensions (mm)	160.8 x 93.3	89.3 x 89.3	160.7 x 93.0	160.7 x 93.0	160.7 x 93.0			185.8 x 135.8
Supply voltage	24V DC ±15 %, < 8W	24V/DC ±15 %, < 4W	24V DC ±15 %, < 12W	24V DC ±15 %, < 20W	24V DC ±15 %, < 20W			24V DC ±15 %, < 20W
Front protection	IP65	IP65	IP65	IP65	IP65			IP65
Weight (kg)	0.37	0.21	0.47	0.47	0.47			0.81

The PWS-series consists of various models and versions

PWS-6se0d-v

S: Size (Inch)

e: Enhancement model

d: Display (C: color, T: TFT, S: STN, F: FSTN)

V: Version (S: standard, P: plus, N: network)



	PWS6600T-S	PWS6600T-P	PWS6600T-N	PWS6620S-P	PWS6620S-N	PWS6620T-P	PWS6620T-N	PWS6700T-P	PWS6700T-N	PWS6800C-P	PWS6800C-N	PWS6A00F-P	PWS6A00T-P	PWS6A00T-N
LCD Type		Color TFT LCD		Mono STN LCD	5.7" (diagonal)	Color TFT LCD		Color TFT LCD		Color STN LCD		Mono LCD		Color TFT LCD
Screen size		5.7" (diagonal)		5.7" (diagonal)	320x240	7" (diagonal)		7" (diagonal)		7.5" (diagonal)				10.4" (diagonal)
Display resolution		320x240		320x240	800x480	800x480		800x480		640 x 480				640 x 480
Brightness (cd/m ²)		350		110	350	350		350		200				400
CPU		32 bits RISC		32 bits RISC	32 bits RISC	32 bits RISC		32 bits RISC		32 bits RISC				32 bits RISC
Contrast adjustment		—		Via touch panel	—	—		—		Via touch panel				—
Display colors		256 colors		16 shades of blue	64K colors	64K colors		64K colors		64K colors		16 shades of gray		64K color
Back light type		CCFT		CCFT	CCFT	CCFT		CCFT		CCFT		CCFT		CCFT
Back light life		60,000 hours		50,000 hours	60,000 hours	50,000 hours		50,000 hours		58,000 hours				50,000 hours
Operation Status LED		PWR, COM1, COM 2, Ethernet LEDs		PWR, COM1, COM 2, Ethernet LEDs		PWR, COM1—3, Ethernet LEDs		PWR, COM1—3, Ethernet LEDs		PWR, COM1—3, Ethernet LEDs				PWR, COM1—3, Ethernet LEDs
Touch screen		Analog		Analog	Analog	Analog		Analog		Analog				Analog
Touch screen (number of times)		> 1,000,000		> 1,000,000	> 1,000,000	> 1,000,000		> 1,000,000		> 1,000,000				> 1,000,000
Keypad		1 Menu key and 5 user-defined function keys (F1—F5)		1 Menu key and 5 user-defined function keys (F1—F5)		1 Menu key and 6 user-defined function keys (F1—F6)		1 Menu key and 6 user-defined function keys (F1—F6)		1 Menu key and 6 user-defined function keys (F1—F6)				1 Menu key and 7 user-defined function keys (F1—F7)
Application Flash ROM		4MB		4MB	4MB	8MB		8MB		8MB		4MB		8MB
RTC (w/rechargeable lithium battery)		Yes		Yes	Yes	Yes		Yes		Yes				Yes
Data/Recipe		—	512KB	512KB	512KB	512KB		512KB		512KB				512KB
Data storage (CF card)		—	—	Yes	Yes	Yes		Yes		Yes				Yes
COM1		9-pin female (RS232/RS485)		9-pin female (RS232/RS485)	9-pin female (RS232/RS485)	9-pin female (RS232/RS485)		9-pin female (RS232/RS485)		9-pin female (RS232/RS485)				9-pin female (RS232/RS485)
COM2		25-pin female (RS232/RS422/RS485)		25-pin female (RS232/RS422/RS485)	25-pin female (RS232/RS422/RS485)	25-pin female (RS232/RS422/RS485)		25-pin female (RS232/RS422/RS485)		25-pin female (RS232/RS422/RS485)				25-pin female (RS232/RS422/RS485)
COM3		—	—	—	—	9-pin female (RS422/RS485)		9-pin female (RS422/RS485)		9-pin female (RS422/RS485)				9-pin female (RS422/RS485)
USB Host		—	—	1	1	2		2		2				2
USB Device		—	—	1	1	1		1		1				1
Multi-functional port		—	26-pin connector for printer	—	—	—		—		—				—
Ethernet		—	Yes	Yes	Yes	Yes		Yes		Yes				Yes
Certification		CE	CE	CE	CE	CE		CE		CE				CE
External dimensions (mm)		195.0 (W) x 145.0 (H) x 59.1 (D)	195.0 (W) x 145.0 (H) x 59.1 (D)	195.0 (W) x 145.0 (H) x 59.1 (D)	195.0 (W) x 145.0 (H) x 59.1 (D)	231.0 (W) x 176.0 (H) x 46.8 (D)		231.0 (W) x 176.0 (H) x 46.8 (D)		231.0 (W) x 176.0 (H) x 46.8 (D)				297.0 (W) x 222.0 (H) x 52.3 (D)
Cut-out dimensions (mm)		185.8 x 135.8	185.8 x 135.8	185.8 x 135.8	185.8 x 135.8	220.8 x 165.8		220.8 x 165.8		220.8 x 165.8				286.0 x 211.0
Supply voltage		24V DC ±15 %, < 20W	24V DC ±15 %, < 20W	24V DC ±15 %, < 20W	24V DC ±15 %, < 20W	24V DC ±15 %, < 24W		24V DC ±15 %, < 24W		24V DC ±15 %, < 24W				24V DC ±15 %, < 30W
Front protection		IP65	IP65	IP65	IP65	IP65		IP65		IP65				IP65
Weight (kg)		0.81	0.86	0.86	0.86	1.20		1.20		1.20				1.90

Standard version

Includes most software and hardware requirements for an operator terminal, such as alarm handling, Windows™ fonts, multi-language support, animated graphics and macro/ladder features.

Plus version

Has the same functionality as the Standard version as well as data/recipe handling and a communication port for a printer or external keyboard.

Network version

The network version is a Plus version with an integral Ethernet networking port.