

报告编号: CTT11080779CN

日期: 2011年08月09日

第 2 页 共 2 页

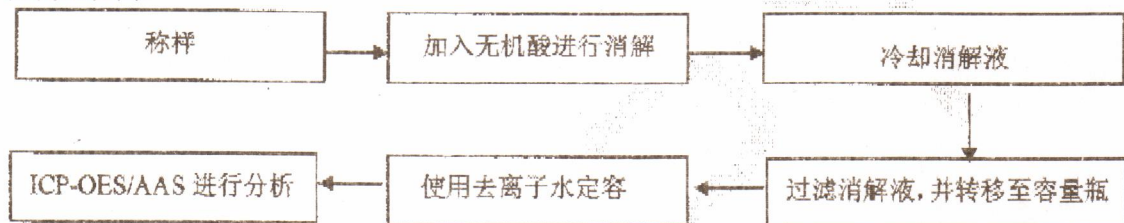
**检测结果: 铅(Pb)**

材料编号	描述	位置
1	银色金属	本体

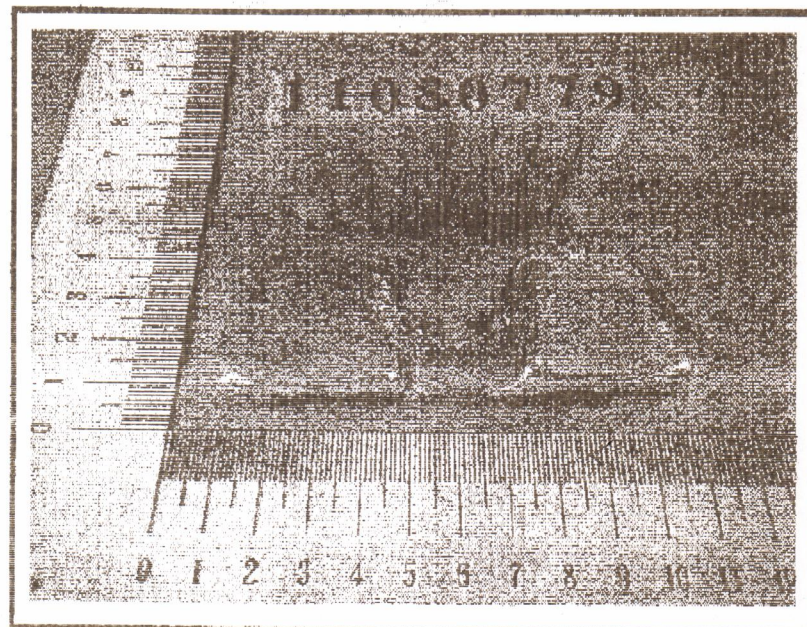
材料编号	检测项目	单位	报告限值	结果
1	铅(Pb)	ppm	10	32

备注: 1. ppm = 百万分之一 (毫克/千克);  
2. N.D. = 未检测到。

**检测流程图:**



**样品照片:**



\*\*\*报告完\*\*\*

This test report is issued by the company subject to its General Conditions of Services printed overleaf or available on request at [www.cttlab.com](http://www.cttlab.com). Attention is drawn to the limitations of liability, indemnification and jurisdictional issues defined therein. Unless otherwise stated the results shown in this report refer only to the sample(s) tested. Without prior written permission of the company, this test report cannot be reproduced, except in full.