



OSHEN INDUSTRY GROUP HYFONG MARINE ENGINES

THANKS FOR YOUR SELECTING OUR OSHEN-HYFONG BRAND 4 STROKE OUTBOARD MOTORS, ALL PRICES ARE BASED ON FOB NINGBO/SHANGHAI TERMS, VALID WITHIN 10 DAYS



MODEL	Item	T2BMS	T2.5BMS	T2.6BMS	T3.5BMS	T4BMS	T5BMS	T6BMS	T9.9BM	T13.5BM	T15BM
2 TROKE											
Overall length	mm(in.)	550(21.6)	560(22.1)	605(23.8)	620(24.4)	700(27.6)			873(34.4)		
Overall width	mm(in.)	220(8.6)	220(8.6)	200(7.9)	220(8.6)	310(12.2)			330(13.0)		
Overall heigth	mm(in.)	920(36.2)	900(35.4)	945(37.2)	960(37.8)	1007(39.6)			1167(45.9)		
Transom heigh	mm(in.)	417(16.4)			432(17.0)	435(17.1)			567(22.3)		
Weight	kg	8		10	17	20			37.5		



OSHEN INDUSTRY GROUP

HYFONG MARINE ENGINES

MODEL	Item	T2BMS	T2.5BMS	T2.6BMS	T3.5BMS	T4BMS	T5BMS	T6BMS	T9.9BM	T13.5BM	T15BM	
Full throttle operating range	r/min	4000-5500		3800-5200	4200-5300	4500-5500						
Maximum output	kw(HP)@r/min	1.4(2)@5000	1.8(2.5)@5000	1.9(2.6)@5000	2.5(3.5)@5000	2.9(4)@5000	3.6(5)@5000	4.4(6)@5000	7.3(9.9)@5000	9.9(13.5)@5000	11(15)@5000	
Idling speed (in neutral)	r/min	1400-1500		1250-1350		1000-1100			700-800			
Engine type		2-Stroke										
Cylinders		1						2				
Displacement	cm ³	43	41	50	74.6	102			246			
Bore x stroke	mm(in.)	40x34(1.57x1.34)	40x32(1.57x1.26)	42x36(1.65x1.42)	47x43(1.85x1.69)	55x43(2.17x1.69)			56x50(2.20x1.97)			
Ignition system		TCI			CDI							
Control system		Tiller										
Starting system		Manual										
Gear positions		\	\	\	Forward-neutral	Forward-neutral-reverse						
Gear ratio		2.08(27/13)				2.15(28/13)			2.08(27/13)			
Trim and tilt system		Manual tilt										
Integral fuel tank capacity	L	1.1	0.9	1.4	1.5	2.5			\	\	\	
Separate fuel tank capacity	L	\	\	\	\	12			24			
Maximum fuel waste	L/h	0.6	0.9	1.4	1.8	2.2	2.7	3.1	5.1	6.1	7.9	
Engine oil capacity (without oil filter)	L	Fuel:oil ratio:25:1			Fuel:oil ratio:50:1							
Gear oil capacity	cm ³	45			75	195			250			
Propeller options*	in	3x7 1/4"x5"			3x7 1/4"x6"	3x7 4/5"x8"			3x9 1/4"x8"			

*** Propeller choice will vary by boat size and application.**

4 STROKE

Model	Unit	F2.5BMS	F4BMS	F5BMS	F6BMS	F9.9BML	F13.5BML	F15BML
Item								
Overall length	mm(in.)	623(25.4)	680(26.8)			1001(39.4)		
Overall width	mm(in.)	345(13.6)	325(15.8)			427(16.8)		
Overall height	mm(in.)	1021(40.2)	1073(42.2)			1167(45.9)		
Transom height	mm(in.)	432(17.0)	435(17.1)			1080(42.5)		
Weight	kg	17	26			47		
Full throttle operating range	r/min	5250-5750	4500-5500	5000-6000		4500-5500		
Maximum output	(HP)@r/min	1.8(2.5)@5500	2.9(4)@5000	3.7(5)@5500	4.4(6)@5500	7.3(9.9)@5000	9.9(13.5)@5000	11(15)@5000
Idling speed (in neutral)	r/min	1800-2000	1500-1600			900-1000		
Engine type		OHV				OHC		
Cylinders		1				2		
Displacement	cm ³	72	123			323		
Bore x stroke	mm(in.)	54x31.5(2.13x1.24)	59x45(2.32x1.77)			59x59(2.32x2.32)		
Ignition system		TCI				CDI		
Control system		Tiller						
Starting system		Manual						
Gear positions		Forward-neutral	Forward-neutral-reverse					
Gear ratio		2.08(27/13)	2.15(28/13)			2.08(27/13)		
Trim and tilt system		Manual tilt						
Integral fuel tank capacity	L	1	1.1			\	\	\
Separate fuel tank capacity	L	\	12			24		
Maximum fuel waste	L/h	1.1	1.6	2	2.4	3.5	4.8	5.3
Engine oil capacity (without oil filter)	L	0.35	0.45			1		
Gear oil capacity	cm ³	75	195			250		
Propeller options*	in	3x7 1/4"x6"	3x7 4/5"x8"			3x9 1/4"x11"		

*** Propeller choice will vary by boat size and application.**



OSHEN INDUSTRY GROUP HYFONG MARINE ENGINES

HYFONG MARINE MOTORS

4
STROKE

PEACEFUL!
POWERFUL!
CHEAP PRICE!

F2.5BMS F4BMS F5BMS F6BMS

WWW.OSHENMOTO.COM

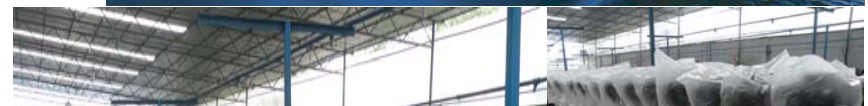
4 stroke
2 stroke
Fresh star
in Marine
industry

WWW.OSHENOTO.COM

T4BMS T5BMS T6BMS

WWW.OSHENOTO.COM

T9.9BML T13.5BML T15BML





OSHEN INDUSTRY GROUP HYFONG MARINE ENGINES



INDUSTRY GROUP/
SHANGHAI SCIENCE & TECH IMP/EXP CO.,LTD.

