



Tec-solar is a Chinese manufacturer of solar thermal water heating products, the products from Tec-solar are widely used in both residential and commercial applications to provide hot water, space heating, swimming pool, project etc. Installing Tec-solar products can reduce CO₂ levels as much as planting trees. It is perfect choice for people to enjoy sunshine and reduce the carbon.

Non-Pressure solar water heater

Features

- ★ Inner water tank SUS 304 food grade stainless steel with automatic welding technique.
- ★ Silicon rings is to seal inner tank.
- ★ Insulation of water tanks' polyurethane foam is 50-60MM thickness.
- ★ The tubes and frame angles are adjustable for your local latitude.
- ★ Non pressure solar water(open-loop) works with atmospheric pressure, the water follows with the pressure caused by the height difference between water tank and shower nozzle, so the water pressure is not very high when the hot water is used small tank feeds the cold water.

Models	Vacuum Tube			Capacity (Lt/Day)	Weight (kg)	Quantity Per20/40 Cont
	Diameter	Length	Quantity			
TS-16-58-180SS(CC)	58mm	1800mm	16pcs	180	55	54/108
TS-18-58-200SS(CC)	58mm	1800mm	18pcs	200	65	50/100
TS-20-58-225SS(CC)	58mm	1800mm	20pcs	225	74	43/86
TS-24-58-270SS(CC)	58mm	1800mm	24pcs	270	87	36/72
TS-30-58-330SS(CC)	58mm	1800mm	30pcs	330	95	31/62



Specification:

- Inner tank: SUS 304-2B food grade stainless steel.
- Outer tank: Stainless steel./Galvanized steel/color steel
- Frame: Stainless steel./Galvanized sheet with powder coating
- Vacuum tube: AL/N/AL selective absorbing coating.
- Package: Cartons with foam.

Pre-heated solar water heater

Features

- ★ The type uses a copper coil heat exchanger inside the tank which provides heat transfer area
- ★ The tank is working by atmospheric pressure, but the copper coil working with pressure. Each SWH is tested by water at 1.2Mpa pressure and by air at 0.6Mpa pressure in the production procedure.
- ★ Since it isn't suitable for bacterial reproduction on copper surface and so it is popular to use it as tap water transport pipe in Eur. And North American markets to make sure the water clean with high quality.
- ★ When the sunshine is weak for several days, the water in the tank can be heated by electric heater , but remember to shut it off before taking shower.
- ★ The water in the tank is always full and hot, no need to load cold water everyday by user since it will be filled with water by the assistant tank automatically.
- ★ The copper coils inlet is connected with tap cold water ,outlet is connected with hot water supplier.
- ★ The hot water flow rate depend on the cold water pressure, more higher pressure of tap water ,the more stronger flow rate of hot water.

Models	Vacuum Tube			Capacity (Lt/Day)	Weight (kg)	Quantity Per20/40 Cont
	Diameter	Length	Quantity			
TS-20-58-225CCP	58mm	1800mm	20pcs	225	80	43/86
TS-24-58-270CCP	58mm	1800mm	24pcs	270	95	36/72
TS-30-58-330CCP	58mm	1800mm	30pcs	330	105	31/62

Key Specification:

- Inner tank: SUS 304-2B food grade stainless steel sheet.
- Outer tank: Galvanized steel/color steel/stainless steel
- Frame: Galvanized sheet with electrostatic plastic coating.
- Vacuum tube: AL-SS.CU coating tube
- Polyurethane: thickness 55-60mm.
- copper coil: T2 copper
- Angle: Adjust it according to different countries' latitude and usage.



Compact pressurized solar water heater

Features

- ★ There is not any water in the vacuum tube, the heat pipe inside each of vacuum tube, thus the water will not flow out if the tube is damage under very cold climate, and it can still operate as usual
- ★ The inner tank is pressure tank, it is tested by 1.2Mpa pressure.
- ★ Before using the hot water, open the hot water outlet value to let hot water in the tank flow down automatically which is corresponding with the water supply pressure. More higher pressure cold water tap, more stronger flowing rate of the hot water for user.
- ★ When the sunshine is weak for several days, the water in the tank can be heated by electric heater , but remember to shut it off before taking shower.
- ★ This system is closed system, so it can save heat energy better than the open system

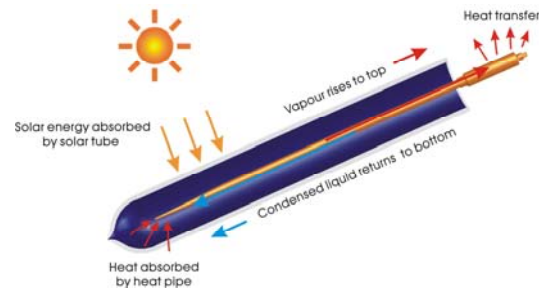
Models	Vacuum Tube			Capacity (Lt/Day)	Weight (kg)	Quantity Per20/40 Cont
	Diameter	Length	Quantity			
TS-20-58-165CPP	58mm	1800mm	20pcs	165	110	35/72
TS-24-58-200CPP	58mm	1800mm	24pcs	200	125	30/61
TS-30-58-250CPP	58mm	1800mm	30pcs	250	145	25/50



Key Specification:

- Inner tank: 304#/316#steel sheet. //Porcelain enamel
- Outer tank: Galvanized steel/color steel/stainless steel
- Vacuum tube: AL-SS.CU coating tube with heat pipe.
- Operation pressure : 0.6Mpa
- Polyurethane: thickness 55-60mm.
- Frame: Stainless steel./Galvanized sheet with powder coating

Evacuated tubes heat pipe solar collector

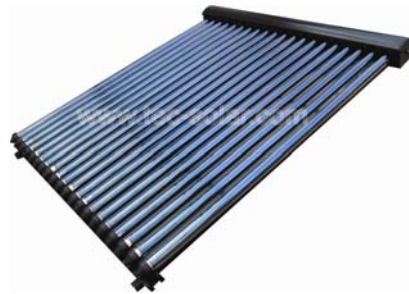


Advantage

- High quality standard heat pipe manufacturer
- Design and manufacturing of high performance collectors for solar thermal systems.
- Certified according to DIN EN ISO9001
- Attractive design, standard frame suitable for pitched roof or flat roof .
- Easy plug-in installation.
- Improves the environment and save your fuel cost.



Flat roof installation



Pitch roof installation

Model name with specification:

Models	Vacuum Tube			Capacity (Lt/Day)	Aperture Area (m ²)	Weight (kg)	Quantity per 20/40 Cont
	Diameter	Lenght	Quantity				
TS-18-58PA	φ 58mm	1800mm	18pcs	162	1.71	68	96/192
TS-20-58PA	φ 58mm	1800mm	20pcs	180	1.9	76	89/179
TS-24-58PA	φ 58mm	1800mm	24pcs	216	3.6	90	77/154
TS-30-58PA	φ 58mm	1800mm	30pcs	270	2.85	110	61/122



SOLAR STREET LIGHT

30W solar LED street light

Specification:

LED lamp: 30W/12V	Battery: 80AH/12V GEL battery
Lamp material: Aluminum die-casting	Life: 3 years warranty, 8 years life
CT: 2700K~6500K	Pole: 6m galvanized
Life: 3 years warranty, 50,000hours life	Material: Q235 or SS400
Solar panel: 120W/12V Poly panel	Life: 10 years warranty, 20 years life.
Life: 10 years warranty, 25 years life	System working temperature: -30°C~ 75°C
Controller: 10A/12V water-proof controller	System working humidity: 10 %~ 90 % RH
Function: Time control+ Light control	Daily working hours: 10 hours
Protection: IP67	Backup for rainy or cloudy days: 3 days
Life: 2 years warranty, 8 years life	Illumination: 6m>25LUX



TSL-001



TSL-002



TSL-003



TSL-004

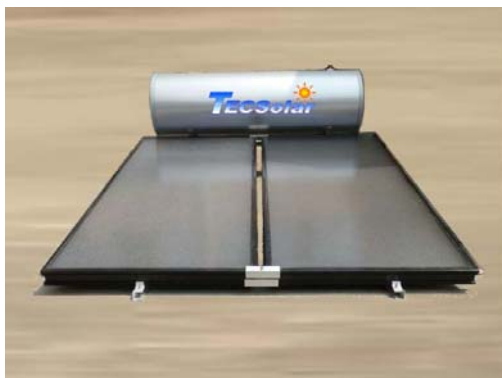


TSL-005



TSL-007

Compact flat solar water heater



Model name with specification:

Compact Flat Solar Water Heater (Direct Type)			
Water Tank	Model	TS-FPS200-PS	TS-FPS300-PS
	Circulation type	Direct circulation	
	Tank capacity	200L	300L
	External dimension (mm)	Φ 580x1000	Φ 580x1900
	Outer tank material	Color coating galvanized steel	
	Inner tank material	SUS304-2B OR SUS 316L Stainless steel / 1.2 MM	
	Max working pressure	6 Bar	
Flat Solar Collector	Model No.	TS-PG2.5	TS-PG2.0
	Dimension(L x W x T)(mm)	2000x1250x80	2000x1000x80
	Total area	2.5m ² x1pc	2.0m ² x2pcs
	Absorber coating	Blue Selective Coating	
	Header pipe	Red copper / Φ22x0.6	
	Riser pipe	Red copper / Φ10x0.5	
	Quantity of riser pipe	9pcs	8pcs
	Welding	Laser welding	
	Cover material	Low iron tempered textured glass	
	Frame material	Anodize aluminum alloy	
	Insulation material	Glass wool	
	Piping connector size	Φ 22	