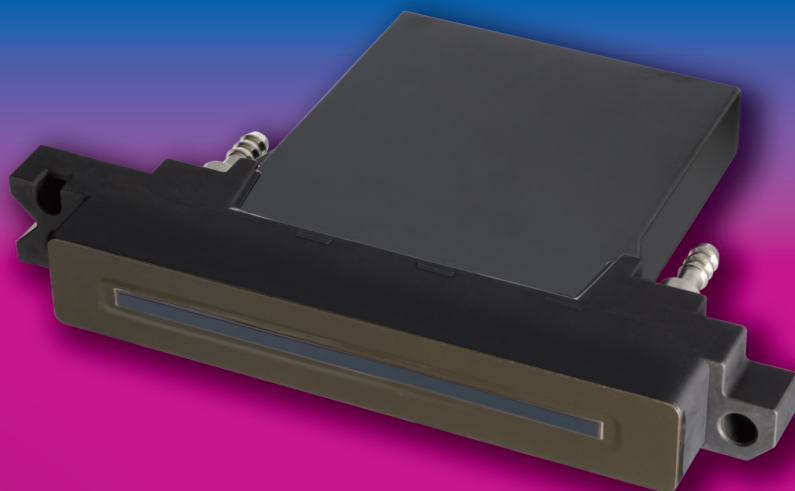


KONICA MINOLTA

INKJET PRINTHEAD

KM1024

New 72mm-Wide Inkjet Printhead, Reducing Energy Consumption by 50%



Environmentally Friendly Inkjet

1024
Nozzles

360
dpi

14pl
Ink drop size

72
mm
Print width

8
levels
Grey scale

Solvent
Ink

UV
Ink



The essentials of imaging

■ Main Features

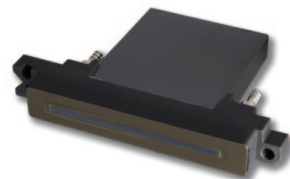
Major improvement in productivity by use of 1024 multi-nozzles and realization of wide print width of 72mm.

The unit is equipped with twice the number of nozzles mounted on the KM512 printhead, enabling the high density required to realize the 72mm print width. This increased width further enhances applicability to printing systems (e.g. Single-pass inkjet printers) that demand high productivity.

Printhead power consumption is reduced by 50%* through the use of a new, high efficiency piezo actuator.

Konica Minolta piezo on-demand inkjet heads are already driven using lower voltages than other inkjet heads and the new actuator used in the KM1024 reduces power consumption even further. This makes the printhead ideally suited to “green” design and shows Konica Minolta’s ongoing consideration for the environment.

*In comparison with the energy consumption per nozzle of the conventional KM512 series.

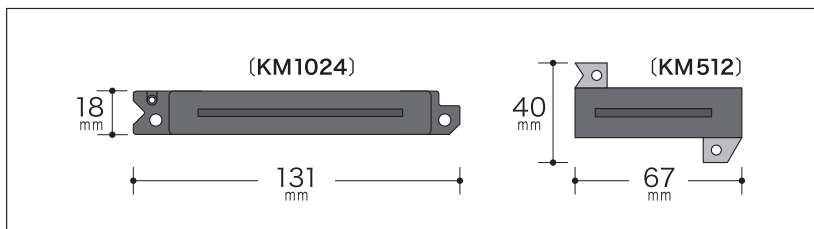


Increased grey-scale levels produce richer tones and more subtle gradients making the printhead even more attractive to existing and new print applications.

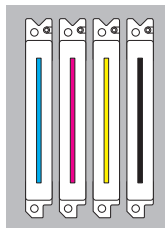
Equipped with a new control IC, the KM1024 printhead can print up to a maximum of 8 drop sizes. This allows even greater control of the printed image resulting in smoother colour gradients and more precisely matched tones.

The ultra-slim, space saving printhead shape improves print quality and allows more compact machine design.

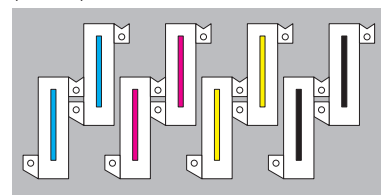
The KM1024 printheads can be mounted very closely together minimising out of alignment errors in the transport or traverse system. This improves print registration resulting in consistently higher quality print. As multiple printheads can be mounted in a smaller space it is often possible to greatly reduce the length of the print path resulting in an overall reduction in machine size.



(KM1024)



(KM512)



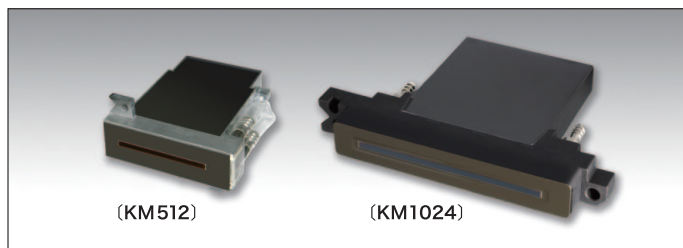
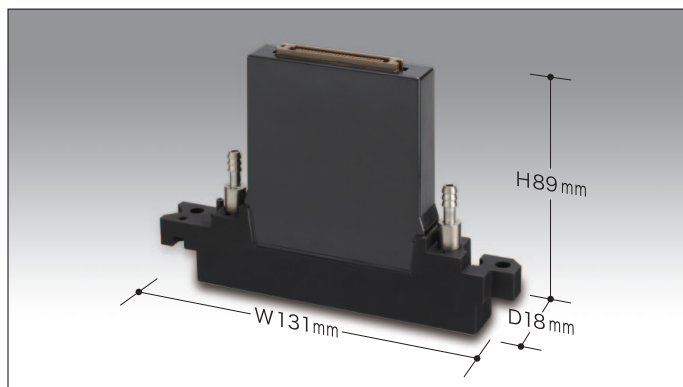
The KM1024 is suitable for use in a diverse range of industrial printing applications.

The product range includes with an integral heater and compatibility with solvent, UV and oil ink types.

■ Specifications

Printhead Name	KM1024MNB	KM1024MHB
Technology	Piezo Drop on Demand (Shared wall 3 cycle)	
Resolution	180dpi × 2lines = 360dpi	
Number of Nozzles	512nozzles × 2lines = 1024nozzles	
Nozzle Pitch	70.5μm (141μm 2lines)	
Drop Size	14pl	
Max Frequency	12.8kHz	
Printing Width	72mm	
Dimensions	W131mm × D18mm × H89mm	
Weight	140g	
Grey scale	8 levels	
Internal Heater		Available
Solvent Ink	OK	
UV Ink		OK
Oil Ink	OK	

*Specifications above could be changed without any announcement.



KONICA MINOLTA IJ TECHNOLOGIES, INC.

No.1 Sakura-machi, Hino-shi, Tokyo 191-8511, Japan
Tel: +81-42-589-3701 Fax: +81-42-589-3865

■ URL: <http://konicaminolta.com>

H102T10B1E