

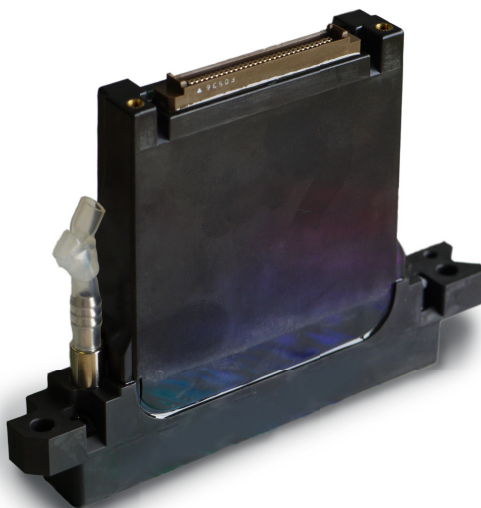


Industrial Inkjet Ltd

Making inkjet work



KMDB



KM1024i MHE

KM1024 'I Series' Printheads

New from Konica Minolta Inkjet technologies, a new, high speed printhead family. The Konica Minolta "i" series printhead family provide reliable high frequency high resolution print in a compact design. Jetting frequency and linear print speed is 3 times existing "shared wall" printheads.

- Excellent jetting stability and print reliability
- Excellent consistency of angle deviation, drop velocity and drop volume
- Same small footprint and simple mounting arrangements as existing KM1024
- Twin ink ports for full ink recirculation
- Simple, easy to implement, electrical interface
- Built-in electrical ink heater
- Suitable for UV, water-based, solvent, ceramic or nano-conductive inks

The KM1024 i series printheads provide print speeds three times those of current printheads, while retaining full 360dpi print resolution. Mechanically the "i" series heads are a direct drop-in replacement for the extremely popular KM1024 series printheads. The electrical interface remains simple and requires low voltages only. Typical high voltage pulses are less than 15volts.

The "I" series design also provides higher print quality through:-

- NO "ABC " nozzle stagger – accurate drop placement at any speed
- Hugely reduced crosstalk over conventional shared wall designs – drop speed independent of printed image

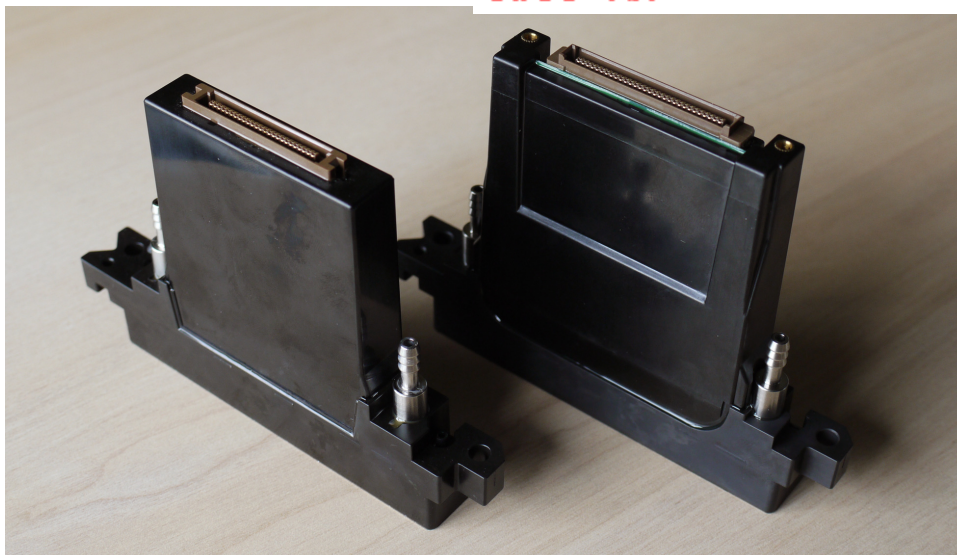
KM1024i MHE now available (13pl version)

Proven reliable 40kHz jetting with standard UV inks.



i SERIES - 05/09/2011

Konica Minolta KM1024'i Series' Printheads



KM1024

KM1024i MHE

Konica Minolta KM1024i MHE - Print Speeds

Mode	pL	Nozzles per inch	Print resolution	Max drops per pixel	Freq (Hz)	Speed /head (m/min)	Speed /head (ft/min)	Area coverage /head (m2 /hr)
Binary	14	360	360	1	40,000	84.7	277.8	365.8
Greyscale	14	360	360	3	13,333.3	56.4	185.2	243.2

Konica Minolta KM1024i MHE - Specification

Nozzles	-	1024 (4 rows x 256 nozzles)
Print width	-	72.19mm
Drop size	-	13pl (tuneable)
Grey levels	-	7 (3 bits)
Ink Ports	-	2 (barbed fittings for 6mm external/ 4mm internal diameter pipe)
Fire Frequency (/drop)	-	35 to 45kHz depending on ink (40khz typical with UV ink)
Ink print rate	-	52ml/min typical
Electrical Connector	-	60 way KEL 8911-060-178L-F
Dimensions	-	17.2mm thick x 93.7mm high x 131.2 long (incl. mounting lugs)
Printhead pitch	-	< 20mm (when mounted in an array)
Weight	-	<150g

Simple mechanical alignment features (across print and rotation)

KMDB

"KMDB" Interface Board available. TTL interface. Simplifies and speeds up integration. Provides automatic printhead temperature control and high voltage drive pulses. Gives full waveform access.



KONICA MINOLTA

www.konicaminolta.com