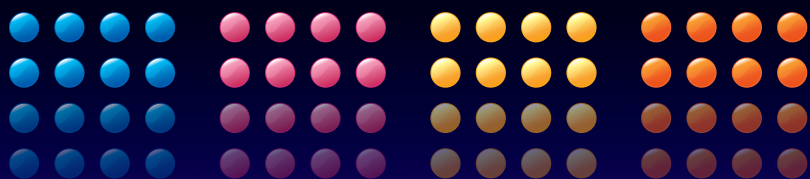


KONICA MINOLTA

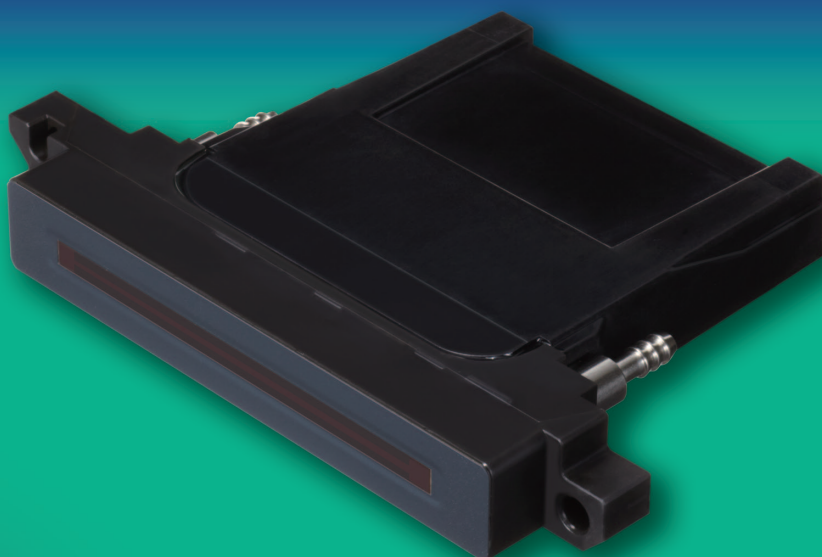
# INKJET PRINTHEAD

## KM1024i Series

Inkjet Printhead featuring an All-nozzle Independent Drive System



green products



**1024**  
Nozzles

**360**  
npi

**13pl**  
Ink drop size

**45kHz**  
Max Frequency

**72mm**  
Print width

**8**  
levels  
Grey scale

**Solvent**  
Ink

**UV**  
Ink

**Oil**  
Ink



Giving Shape to Ideas



## ■ Main Features

### Inkjet Printhead featuring an All-nozzle Independent Drive System with a Multi-line Structure

In contrast with the existing 3-cycle system drive, an independent drive system that enables simultaneous emission from all 1024 nozzles has been adopted. The high-density structure featuring 4 lines of 256 nozzles aligned with high precision enhances positioning accuracy to realize high-definition print quality.

### Maximum Drive Frequency (45 kHz) approximately 3 Times greater than that of the KM1024 Series

Adoption of an independent drive system has made it possible to realize a drive frequency (45 kHz) approximately 3 times greater than that of the KM1024 Series. This is the ideal inkjet printhead for development of single-pass system inkjet printers capable of high-speed printing.

### Head Structure featuring Stable Emission Performance and Outstanding Ink Tolerance

KM1024i enables stable emission of a wide variety of industrial inks and features and ink-tolerant structure. In addition, the structure is capable of ink circulation, making it possible to also use ink prone to precipitation.

### Appropriate Control of Ink Temperature by the High-performance Built-in Heater

KM1024i features a high-performance heater built into the head, enabling stable temperature control of high-viscosity and other inks used in industrial applications.

### Capable of Printing of a Maximum of 8 drop sizes, High Resolution Nozzles of 360 npi

Like the existing KM1024 Series, KM1024i is mounted with a high-performance IC to enable printing of a maximum of 8 drop sizes. This makes the product ideal for new applications that require even greater richness of gradient expression and high-definition image quality.

### Environmentally-considerate Approved Green Product (\*1)

KM1024i incorporates only approximately one-third (\*2) of the petroleum-derived materials and toxic chemicals used in the current KM1024 Series. In addition, the nozzle unit surface area is the same as that of the KM1024 Series.

#### \*1: Concerning Green Product Approval

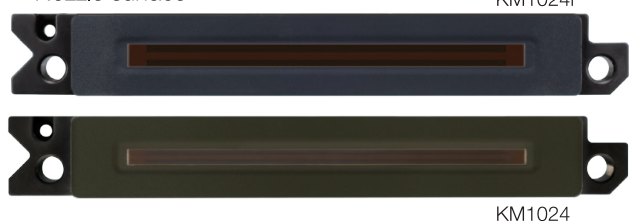
The Konica Minolta Group has launched the "Green Product Approval System" which is designed to evaluate products with outstanding environmental performance in accordance with original standards. Inkjet Printhead KM1024i is a product that has gained this system standard.

\*2: Approximately One-third of the Amount of Petroleum-derived Resources and Toxic Substances



**Reduction of the amount of petroleum-derived resources used to approximately one-third**  
(Comparison with KM1024 in terms per productivity)

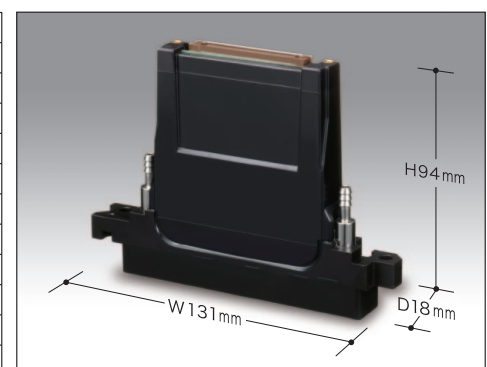
■ Nozzle surface



## ■ Specifications

Printhead Name	KM1024iMHE
Technology	Piezo Drop on Demand
Drive System	Independent drive system
Resolution	360npi (90npi × 4lines)
Number of Nozzles	1024nozzles (256nozzles × 4lines)
Drop Size	13pl
Max Frequency	45 kHz
Printing Width	72mm
Dimensions	W131mm × D18mm × H94mm
Weight	Approx.150g
Grey scale	8 levels
Compatible Ink	Solvent Ink, UV Ink, Oil Ink

\*Specifications above could be changed without any announcement.



**KONICA MINOLTA, INC.**

**Inkjet Business Unit**

No.1 Sakura-machi, Hino-shi, Tokyo 191-8511, Japan  
Tel: +81-42-589-3701 Fax: +81-42-589-3865

■ URL: <http://konicaminolta.com>

Recycled Paper H1306002B1E