



GB-1823 升华打印机

Inkjet printer

操作说明

Operational Instruction



ZS-GB1823

东莞市至上印花机械有限公司

Best Printing Machine Limited 30-1

Website: [Http://www.zsheatpress.com](http://www.zsheatpress.com)

Email: sales@zsheatpress.com



GB-1823

Inkjet printer instruction

Website: [Http://www.zsheatpress.com](http://www.zsheatpress.com)

东莞市至上印花机械有限公司

Best Printing Machine Limited 30-2

Website: [Http://www.zsheatpress.com](http://www.zsheatpress.com)

Email: sales@zsheatpress.com



Preface/序言

非常感谢你购买写真机

为了确保全面了解本产品性能和正确安全地使用，请务必读本手册并将其妥善保管。

禁止全部或部分非法复制本手册，否则本公司将依法追究其法律责任。

本手册的内容和本产品参数若有改动，恕不通知。

我方已尽力编辑本手册并检测本产品，如果你发现任何错误，请告知我们，我们将成分感谢。

Thank you very much for purchasing the inkjet printer

To ensure a comprehensive understanding of the product's performance and proper and safe use, be sure to read this manual and keep it in a safe place.

It is forbidden to copy this manual in whole or in part illegally, otherwise the Company will be held liable according to law.

The contents of this manual and the parameters of this product are subject to change without notice.

We have endeavored to edit this manual and to test the product. If you find any errors, please let us know and we will be grateful for the ingredients

使用约定/Reminding

确保安全和正确使用本产品可避免人员受伤和财产损失。有关安全预防知识在本手册中归为 3 类进行描述，在阅读手册前确保对以下这些分类之间的差异进行全面的理解。

Ensure safe and proper use of this product to avoid personal injury and property damage. Knowledge of safety precautions is described in this manual in three categories, and a thorough understanding of the differences between these categories is ensured before reading the manual.

DANGER

这类的预防信息被忽视，将可能给操作员带来严重的伤害。

This kind of precautionary information is ignored and can cause serious injury to the operator.

WARNING

这类的预防信息被忽视，可能导致操作员受伤。

This kind of prevention information is ignored, may lead to operator injuries.

CAUTION

这类的预防信息被忽视，可能导致操作受伤或设备损坏。

Such precautions are ignored and may result in injury to operation or damage to the equipment.



■ 安全符号解释



注意危险。

Danger



禁止执行操作。

Strictly prohibit operation



必须执行操作。

The operation must be performed

注意危险-Danger

禁止执行操作- Strictly prohibit operation

必须执行操作- The operation must be performed

安全指导/ Safety Instructions

◆ 打印机安装/installed

WARNING

请勿在易挥发的溶剂（酒精或稀释剂）附近安装打印机。

-挥发性溶剂与电子部件接触，可能会引起火灾和设备短路。

请勿在本产品上面放置任何物品。

-物品会引起设备故障

Do not install the printer near volatile solvents (alcohol or thinner).

- Volatile solvents in contact with electronic components may cause fire and equipment short-circuits.

Do not place anything on top of this product.

- Items may cause equipment malfunction

CAUTION

请勿将本产品放置在倾斜或者容易振动的地方。

这样的放置区将会造成设备倾翻或损坏。

Do not place the product in an inclined or vibration-prone location.

东莞市至上印花机械有限公司

Best Printing Machine Limited 30-4

Website: [Http://www.zsheatpress.com](http://www.zsheatpress.com)

Email: sales@zsheatpress.com



Such a placement area will cause the device to tip over or be damaged.

如果设备放置在平滑的台面上，请确保使用轮刹，以免设备工作时移动。

如果设备放置不合适，将造成设备倾翻或损坏。

If the equipment is placed on a smooth surface, make sure to use wheel brakes to avoid movement while the unit is in operation.

If the equipment is not properly placed, it will cause the equipment to overturn or damage.

避免在下列地方使用本产品

在以下地方使用本产品可能会引起火灾和短路。

过分潮湿和干燥的地方

阳光直射的地方

高温的地方

靠近明火或湿气的地方

Avoid using this product in the following locations

Using the product in the following locations may cause fire and short-circuit.

Excessive moisture and dry place

Direct sunlight

High temperature place

Near a fire or moisture

在以下地方使用本产品可能会引起机器故障

产生强磁场或磁场设备附近的地方

本产品合适使用温度为 20°C-28°C，湿度为 40%-70%。

Using the product in the following places may cause malfunction of the machine

Produce a strong magnetic field or magnetic field near the equipment

This product is suitable for the use of temperature 20 °C -28 °C, humidity 40 % -70 %.

保证设备有足够操作空间

为保证顺利操作，应在设备前后左右预留足够操作时间（前后约 2M,左右约 3M）。

Ensure that the equipment has sufficient operating space

In order to ensure smooth operation, should be left in the equipment around enough time to reserve (before and after about 2M, about 3M).

◆ 电源安全/Power safety

WARNING

如电源线出现损坏，请勿自行修理

这样可能会在损坏处产生漏电，从而引起火灾或短路。

东莞市至上印花机械有限公司

Best Printing Machine Limited 30-5

Website: [Http://www.zsheatpress .com](http://www.zsheatpress.com)

Email: sales@zsheatpress.com



禁止用湿手去播拔电源，避免引起触电事故或短路。

If the power cord is damaged, do not repair it yourself

This may lead to a fire or short circuit in the event of electrical leakage outside the damage.

Do not use wet hands to play power, avoid electric shock or short circuit.

避免多个设备使用同一个电源插座。

这样可能会引起火灾或短路。

Avoid multiple devices using the same power outlet.

This may cause a fire or a short circuit.

请勿捆绑或缠绕电源线。

这样可能会引起火灾或短路。

Do not bundle or wind the power cord.

This may cause a fire or a short circuit.

确保电源线稳固和插入电源插座。

否则可能会引起火灾或短路。

Ensure that the power cord is secure and plugged into an electrical outlet.

This may cause a fire or a short circuit.

不要使用与本产吕型号不匹配的电源线。

这样可能会引起火灾或短路。

Do not use a power cord that does not match the model.

This may cause a fire or a short circuit.

连接地线请注意如下要点。

适合连接的地线位置

电源的接地端

完好的地桩地端

禁止连接的接地位置

水管

煤气管

电话线和导闪电线

Please note the following points to connect the ground wire.

The ground position for the connection

The ground terminal of the power supply

Good ground pile to the end

The grounding position of the connection is prohibited

Water pipes

Gas pipe

Telephone lines and lightning lead wires

东莞市至上印花机械有限公司

Best Printing Machine Limited 30-6

Website: [Http://www.zsheatpress .com](http://www.zsheatpress.com)

Email: sales@zsheatpress.com



CAUTION

请按说明使用电源电压

未使用指定的电源电压可能会引起火灾或短路

Use the power supply voltage as described

Failure to use the specified mains voltage may cause a fire or a short circuit

断开电源线时，一定要拉着插头，而不要拉着电源线本身。

When disconnecting the power cord, be sure to pull the plug, not the power cord itself.

一般情况下不要使用附加电源线

Under normal circumstances do not use an additional power cord

如果使用附加电源线，切记插入该附加电源线的设备的总安培数不要超过该电源的额定安培数，另外，切记插入墙上的所有设备的总安培数不要超过墙上插座的额定安培数。

If you are using an additional power cord, be sure that the total ampere rating of the device plugged into the add-in power cord does not exceed the ampere rating of the power supply, and that the total amperage of all devices plugged into the wall does not exceed the amperes rating of the wall outlet.

确保电源插头在任何时间可以容易的拔下，确保没有物体放在它的周围。

Make sure that the power plug can be easily unplugged at any time, ensuring that no object is placed around it.

保证接地良好

To ensure good grounding.

避免所使用的插座与复印机或空调系统这些规则地在开和关之间切换的设备在同一回路中。

Avoid using sockets that are in the same circuit as the copier or air conditioning system, which regularly switches between on and off.

避免使用由墙上开关或自动定时器控制插座。

Avoid using a wall socket switch or automatic timer control socket.

将您的计算机系统远离潜在的电磁干扰源。

例如：扬声器或无绳电话机座。

Keep your computer system away from potential sources of electromagnetic interference.

Such as a speaker or a cordless telephone base.

不要使用损坏或损磨的电源线

Do not use damaged or damaged power cords.



◆ 操作安全注意事项/Operation

WARNING

不要试图自己拆装和修理打印机。

Do not attempt to disassemble and repair the printer yourself.

如果打印机产生异常噪声，产生烟尘，温度升高，发出奇怪的气味或者其他功能不正常，应立即关掉电源，拔掉电源线与你购买打印机的厂商联系。

If the printer generates abnormal noise, smoke, temperature, strange smell or other abnormalities, immediately turn off the power, unplug the power cord and you buy the printer manufacturers to contact.

在打印机的周围不要使用易燃性物体或者类似的产品。

Do not use flammable objects or similar products around the printer.

在移动打印机之前，确保关掉电源，拔掉电源线。

Before moving the printer, be sure to turn off the power and unplug the power cord.

始终使用电源开关来关闭打印机，但该键被按下时，电源将被切断，在电源被切断之前，不要拔下打印机插头或数据线。

Always use the power switch to turn off the printer, but when the key is pressed, the power will be cut off. Do not unplug the printer plug or data cable until the power is turned off.

在搬运打印机之前确保打印头固定在初始位置，并使之固定

Make sure that the print-head is held in its original position and secured before handling the printer

CAUTION

注意防止金属物品或液体接触到内部电气部件，否则可能导致火警或触电。

Prevent metal objects or liquids from touching internal electrical components, as this could result in fire or electric shock.

在打印的时候严禁把手放在打印机上。

Do not put your hand on the printer while printing.

确保电源线连接正确。

Make sure that the power cord is properly connected.

在遇到下列情况时，切断电源后请有经验的维修人员来维护：

In the following cases, the power cut off after experienced maintenance personnel to maintain:

- 如果电源线或插头损坏
- 如果液体溅入打印机中

东莞市至上印花机械有限公司

Best Printing Machine Limited 30-8

Website: [Http://www.zsheatpress .com](http://www.zsheatpress.com)

Email: sales@zsheatpress.com



- 如果打印机摔下来或机壳破损
- 如果打印机不能正常操作或者性能上有明显的变化:
- If the power cord or plug is damaged
- If liquid is spilled into the printer
- If the printer is dropped or the case is damaged
- If the printer does not operate properly or there is a significant performance change:

◆ 维修和检查防范/Repair

WARNING

请务必在关掉电源，在将电源插头从电源插座上拔出之前，不从事清洁作业。

- 如果不这样做，可能会导致火灾的危险或触电

Be sure to turn off the power and do not perform any cleaning work until the power plug is unplugged from the power outlet.

- Failure to do so may result in a fire hazard or electric shock

用已经被清洗液润湿的布料清洗打印机，不要使用如酒精，苯等易挥发的溶剂去清洗打印机，对机器的部件不要使用任何润滑剂。

Clean the printer with a cloth that has been wetted with the cleaning solution. Do not use any volatile solvents such as alcohol or benzene to clean the printer. Do not use any lubricant on the parts of the machine.

CAUTION

每年进行至少进行一次，清除电源插头从到电源插座和清理周边区域。

- 积聚的灰尘可能会导致火灾的危险。

当清洁或检查里面的打印机时，要确保金属物体，如项链或手镯，不要接触任何内部组件。

- 这种行为可能会导致伤害或触电

At least once a year, clear the power plug from the power outlet and clean the surrounding area.

- Accumulated dust may cause fire hazard.

When cleaning or checking the inside of the printer, make sure that metal objects, such as necklaces or bracelets, do not touch any of the internal components.

- This behavior may result in injury or electric shock

◆ 防范处理消耗品/Consumables

CAUTION

在打印机运作的时候，不要触摸任何金属部件及打印头。

- 打印故障可能发生。

东莞市至上印花机械有限公司

Best Printing Machine Limited 30-9

Website: [Http://www.zsheatpress.com](http://www.zsheatpress.com)

Email: sales@zsheatpress.com



- 容易产生静电会造成损害
- 为安全起见，存储打印头和墨水在一个儿童够不到的地方。
- 如果油墨被舔或摄入体内，请立即请教医生

Do not touch any metal parts or print-heads while the printer is in operation.

- Print failure may occur.
 - Easily produce static electricity can cause damage
- For security reasons, store the print head and ink out of the reach of a child.
- If the ink is licked or ingested, consult a physician immediately

WARNING

注意不要让墨水溅到你的眼睛里或口中。

- 这可能导致呼吸困难或损坏你的眼睛。
- 如果油墨溅入你的眼睛。立即冲洗，并请教医生。

如果你意外食用油墨，不要试图诱使呕吐。立即咨询医生。

- 流入油墨是可能造成损害，从而影响打印机的表面涂层。

Be careful not to spill ink into your eyes or mouth.

- This may cause difficulty in breathing or damage to your eyes.
- If ink splashes into your eyes. Rinse immediately and consult a doctor.

If you accidentally consume ink, do not try to induce vomiting. Consult a doctor immediately.

- Inflow of ink is likely to cause damage, thus affecting the surface coating of the printer.

CAUTION

不要使用指定以外的任何墨水，因为他可能不仅扰乱印刷质量，而且导致故障。

不要使用过期的油墨，因为他可能会引起故障。

废墨的处置是请遵照有关法规执行。

小心不要让墨水进入你的皮肤或者衣服。如果油墨进去你的皮肤，立即用肥皂和水冲洗它。

定期检查废墨水瓶，以避免溢出。

存放油墨，在黑暗寒冷的地方，不要储存地点暴露于高温或者阳光直接照射。这可能影响其质量。

Do not use any ink other than specified because he may not only disrupt print quality, but also cause a malfunction.

Do not use expired ink because it may cause a malfunction.

Dispose of waste ink is in accordance with the relevant laws and regulations.

Be careful not to let ink get into your skin or clothes. If ink goes into your skin, immediately rinse it with soap and water.

Check the waste ink bottle periodically to avoid spillage.

Store the ink in a dark, cold place, do not store the location of exposure to high temperature or direct sunlight. This may affect its quality.

东莞市至上印花机械有限公司

Best Printing Machine Limited 30-10

Website: [Http://www.zsheatpress.com](http://www.zsheatpress.com)

Email: sales@zsheatpress.com



第一章 概述/Overview

技术参数

产品型号	GB-1823	
打印宽度	1800mm	
打印分辨率	360DPI /720DPI /1800DPI	
墨点类型	灰度可变点	
喷头数量	2	
打印精度及速度	3PASS (360×1800)	50 m²/h
	4PASS (720×1200)	40m²/h
	6PASS (720×1800)	30 m²/h
墨水类型	水性染料，水性颜料，热升华	
墨水颜色	4 色，CMYK	
供墨方式	卡盒式供墨盒系统、连续供墨系统为选配件	
墨盒容量	标准 1500ML/盒	
介质类型	PP 合成纸，高光相纸，灯片，PVC，旗帜布等	
放卷方式	标配无动力放布，自动放布和自动收布为选配件	
介质最大宽度	1800mm	
介质最大重量	自动放布，自动收卷（选配），小于 50KG/卷	
喷头架高度	1.5 毫米-3.5 毫米喷头高度可调	
喷头清洗系统	喷头自动清洗系统，具有防堵闪喷和自动保湿功能	
介质加热系统	前后加热采用远红外纳米恒温加热系统	
	台板加热温度可调	
画面烘干系统	标准冷风配置，PTC 热风选配	
显示	LCD 液晶显示和电脑软件面板操作	
数据接口	USB2.0	
RIP 软件	标准 MainTop RIP , PrintDream	
操作平台	Win 7, Win 8, Win 10	
电源	220V , 50HZ/ 60HZ	
运行环境	温度： 20℃-28℃ 湿度： 40%-70%	
打印机尺寸/重量	净尺寸/重量： 3070(L)mm×750mm(W)×1380mm(H)/260KG	

以上产品之技术参数若有变化，恕不另行通知。

东莞市至上印花机械有限公司

Best Printing Machine Limited 30-11

Website: [Http://www.zsheatpress.com](http://www.zsheatpress.com)

Email: sales@zsheatpress.com



Technical parameters

Model	GB-1823	
Width	1800mm	
Resolution	360DPI /720DPI /1800DPI	
Dot type	Halftone Gradient	
Print-head number	2	
Print speed	3PASS (360×1800)	50 m²/h
	4PASS (720×1200)	40m²/h
	6PASS (720×1800)	30 m²/h
Ink Type	Water-based dyes, water-based pigments, sublimation	
Ink color	4 colors , CMYK	
Ink supply	Cartridge for the cartridge system, continuous ink system for the optional accessories	
Ink box volume	Standard 1500ML	
Substrate	PP synthetic paper, high-photo paper, light films, PVC, such as flag cloth	
Feeding	Standard non-powered release, automatic release and automatic collection cloth as an option	
Material max width	1800mm	
Roller weight	50KG/Roller	
Height of print head	1.5mm--3.5mm	
Print-head clean system	Automatically clean system	
Drying system	IR drying device, Temperature adjustable	
Screen	LCD	
Data interface	USB2.0	
RIP software	MainTop RIP , PrintDream	
Operation system	Win 7, Win 8, Win 10	
Power supply	220V , 50HZ/ 60HZ	
Working room	Tem: 20℃-28℃ Hum: 40%-70%	
Outer size/weight	3070(L)mm×750mm(W)×1380mm(H)/260KG	



第二章 安装指南/Installing

2.1 安装打印机机架/Installing printer frame

WARNING

安装打印机机架时至上 2 人以上安装，防止机架在安装过程中不稳而倒下伤人。

2.1.1 安装机脚组件

将包装箱中的机脚底座和机脚立柱取出，准备安装机脚组件

2.1.2 安装机架

将机身安装在机脚组件上

注意：考虑到机身有一定的重量，请借助于叉车来辅助安装，如果没有叉车需要确保有足够的人员来抬起机架，否则有可能会由于机身翻到而引起对设备和人员的损伤。

When installing the printer rack, install more than 2 persons to prevent the rack from falling down and wounding during the installation.

2.1.1 Install the foot assembly

Remove the base and foot posts from the box and prepare the foot assembly

2.1.2 Installing the Rack

Install the body on the foot unit

Note: In view of the fuselage have a certain weight, please use the forklift to assist in the installation, if there is no need to ensure that there is sufficient forklift staff to lift the rack, otherwise there may be due to turn the body caused by the equipment and personnel damage.

2.2 安装烘干器组件/Installing Drying Component

WARNING

安装烘干器组件时至少 2 人以上安装，防止冷风组件坠落伤人

2.2.1 安装烘干器支架

取下捆绑在烘干器组件上的安装支架，拧下固定在机架组件上的安装螺丝（M8×14 内六角螺丝）

2.2.2 安装烘干器组件

When installing the dryer assembly, install at least 2 persons to prevent the cold air components from falling and wounding

2.2.1 Install the dryer bracket

Remove the mounting bracket that is attached to the dryer assembly and remove the mounting screws (M8 x 14 hexagon socket screws) that are secured to the rack assembly.

2.2.2 Install the dryer assembly



2.3 通电开机/Start printer

2.3.1 选择合适的电源

(1) 电源电压的要求:

根据国家和地区不同, 可选用:

打印机电源: AC 220V 50HZ 或者 AC 110V 60HZ

电脑电源: 选择与电脑和显示器相匹配的电源要求

对该设备来说: 接地一定要良好。(建议在机器的接地端子上单独接一根接地线接大地)

为保证供电稳定, 最好配置在线式 UPS 稳压电源。

2.3.1 Select the appropriate power supply

(1) Power supply voltage requirements:

According to different countries and regions, can choose:

Printer power supply: AC 220V 50HZ or AC 110V 60HZ

PC Power: Selects the power requirements that match the computer and monitor

For this equipment: Grounding must be good. (Recommended in the machine's ground terminal on a separate then a ground wire to the earth)

In order to ensure stable power supply, the best configuration on-line UPS power supply.

CAUTION

请选用打印机标识的电源, 以免因使用不符合要求的电源, 而使机器被损坏。

(2) 接通电源钱请仔细清理检查其内部的包装泡沫纸、胶带及固定喷头的卡子等。

(3) 连接电源线

2.3.2 开机系统自检

注意: 在开机之前建议用户先将小车人工左右满行程拉动一次, 以确保打印台板无异物与喷头底板干涉, 确保小车架上的管路没有与打印机外壳有任何干涉

Please use the power of the printer logo, so as not to use the power supply does not meet the requirements of the machine is damaged.

(2) Turn on the power supply Please carefully clean up check the internal packaging foam paper, tape and fixed nozzle of the clamp and so on.

(3) Connect the power cord

2.3.2 boot system self-test

Note: Before turning on, it is recommended that you pull the car manually all the way around to ensure that the platen does not interfere with the nozzle plate, and make sure the tubing on the carriage does not interfere with the printer case.



第三章 软件安装/ Software installing

1.控制软件安装/Controlling software setup

1.安装前准备工作/Prepare

推荐电脑硬件和软件配置：

硬件

处理器：Inte (R) Core (TM) i5-6300HQ CPU @ 2.30GHZ 2.30 GHZ

系统类型：(RAM):8.00GB

Recommended computer hardware and software configuration:

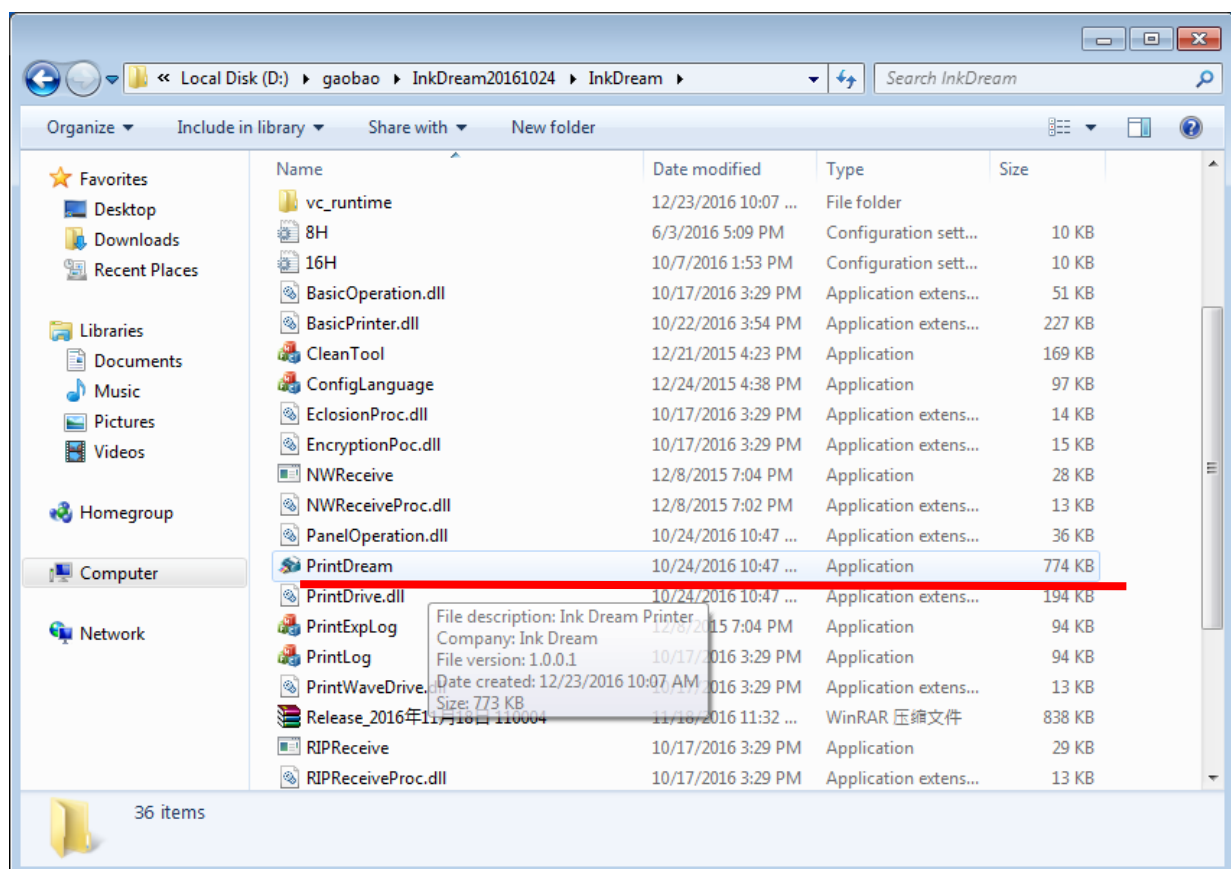
hardware

Processor: Inte (R) Core (TM) i5-6300HQ CPU @ 2.30GHZ 2.30 GHZ

System type: (RAM): 8.00GB

2.PrintDream 打印控制软件的安装

将打印软件压缩包解压出来并将应用程序发送至桌面快捷方式即可



东莞市至上印花机械有限公司

Best Printing Machine Limited 30-15

Website: [Http://www.zsheatpress.com](http://www.zsheatpress.com)

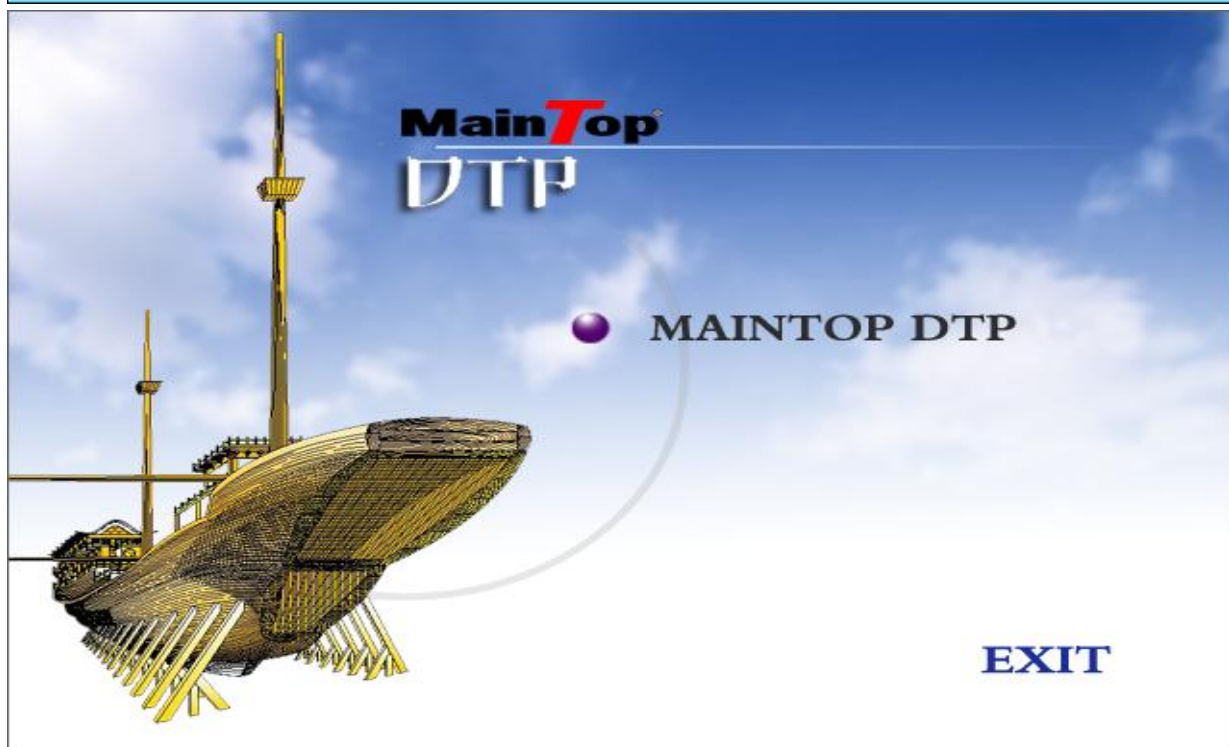
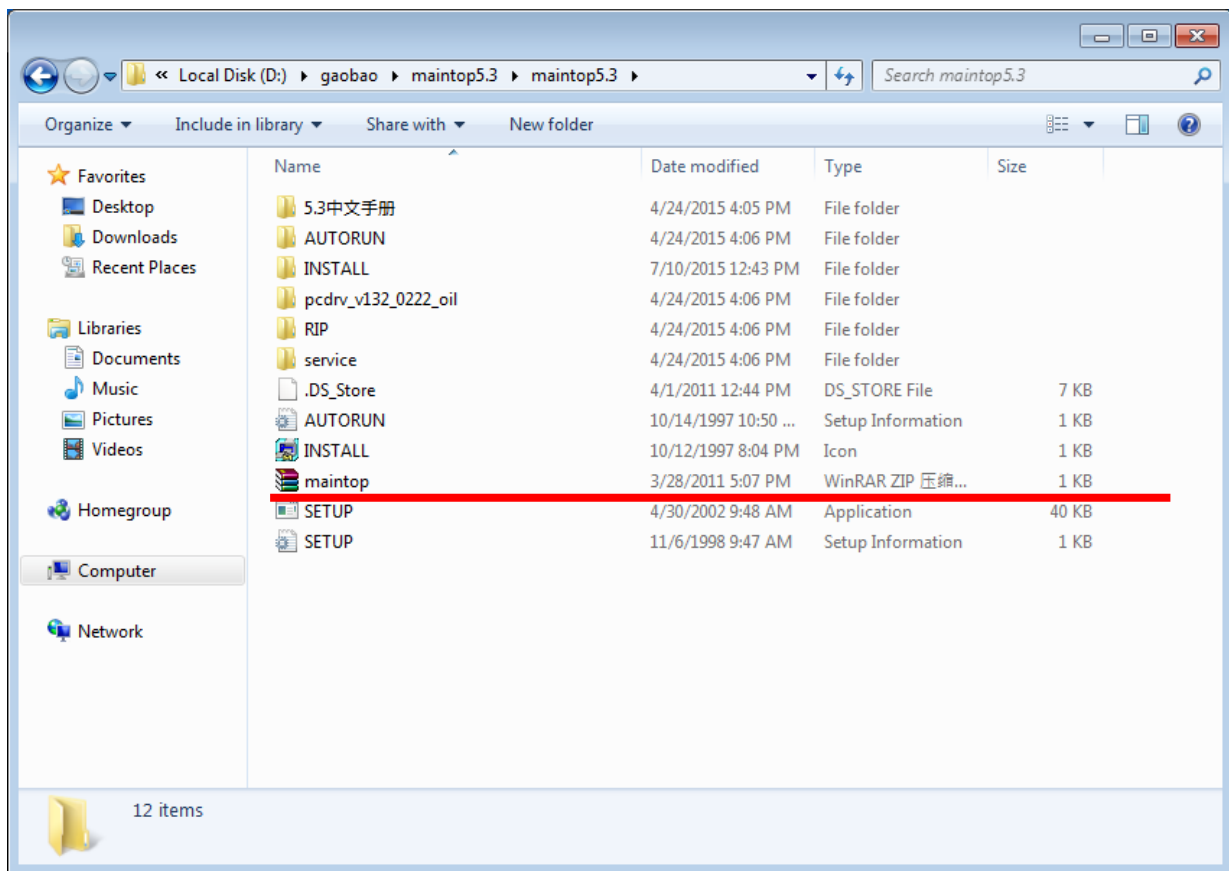
Email: sales@zsheatpress.com



2. 蒙泰安装/maintop system setup

1) 将蒙泰解压至电脑硬盘

1) Unzip **Maintop** to the computer hard drive



东莞市至上印花机械有限公司

Best Printing Machine Limited 30-16

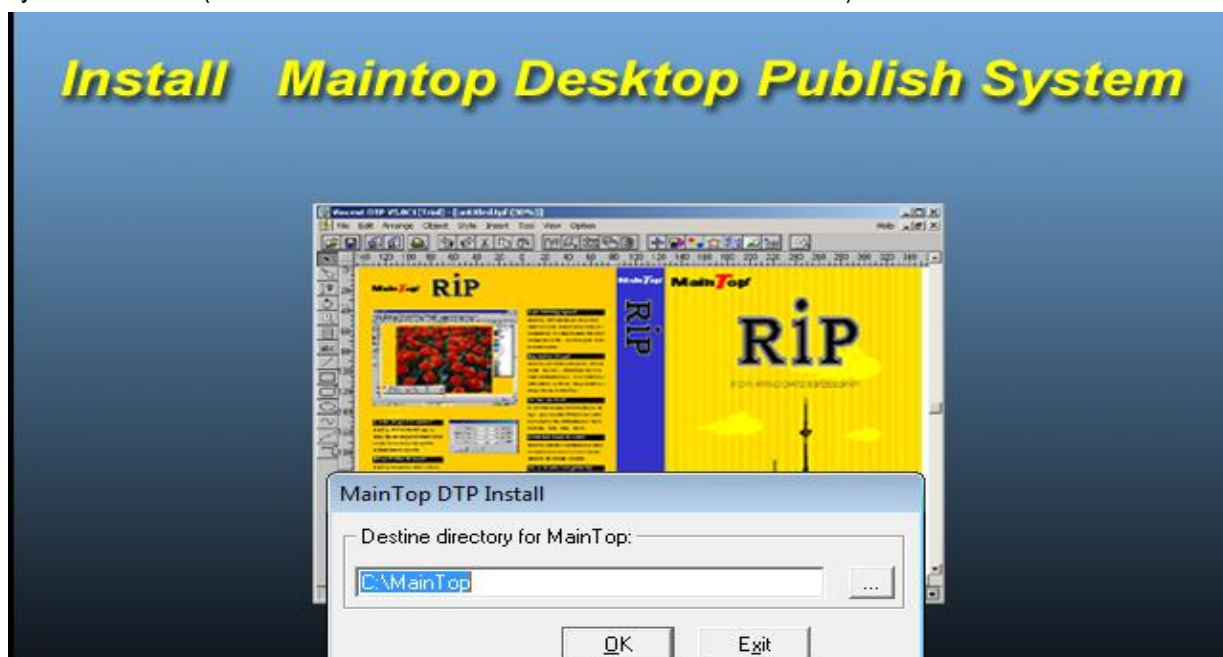
Website: [Http://www.zsheatpress.com](http://www.zsheatpress.com)

Email: sales@zsheatpress.com



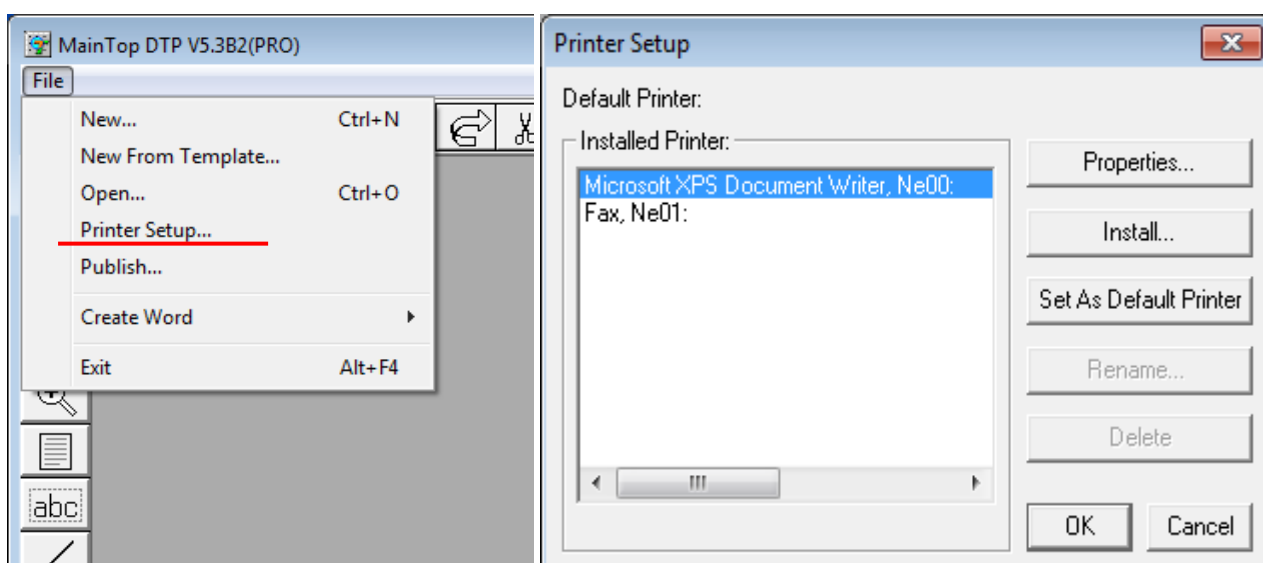
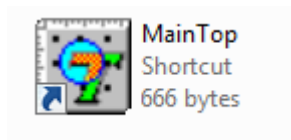
2. 打开 “ SETUP” 应用程序点击第一项-蒙泰 DTPV5.3 彩色电子出版系统 进行安装（建议安装到除 C 盘以外的其他磁盘）

2. open the "SETUP" "Application Click the first item - Maintop DTPV5.3 color electronic publishing system to install (recommended to install to a disk other than the C drive)



3. 安装完成后将图标移到桌面， 打开蒙泰， 点击文件-打印机设定-安装蒙泰打印机

3. After installation is complete, move the icon to the desktop, open Maintop , click File - Printer Settings - Install the Maintop printer



东莞市至上印花机械有限公司

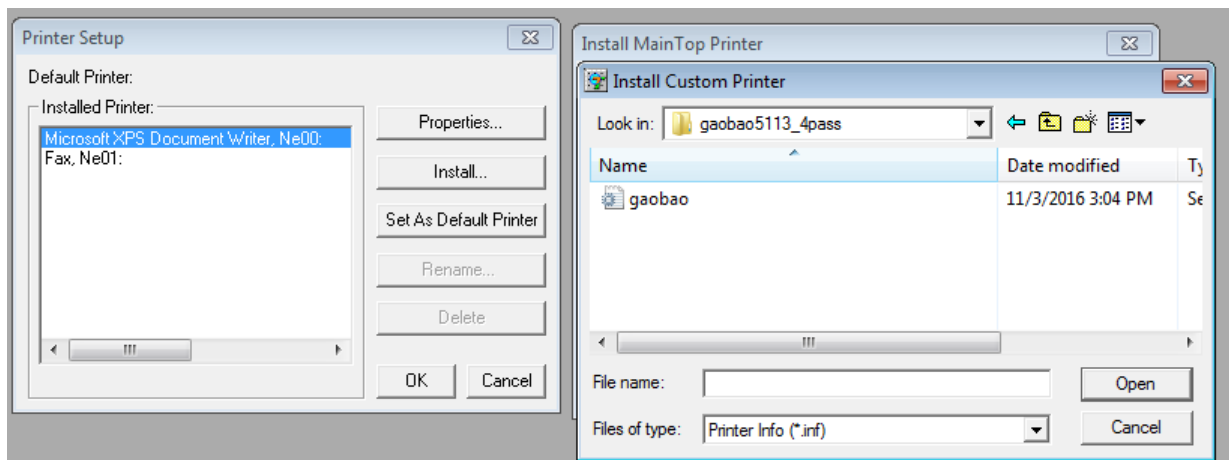
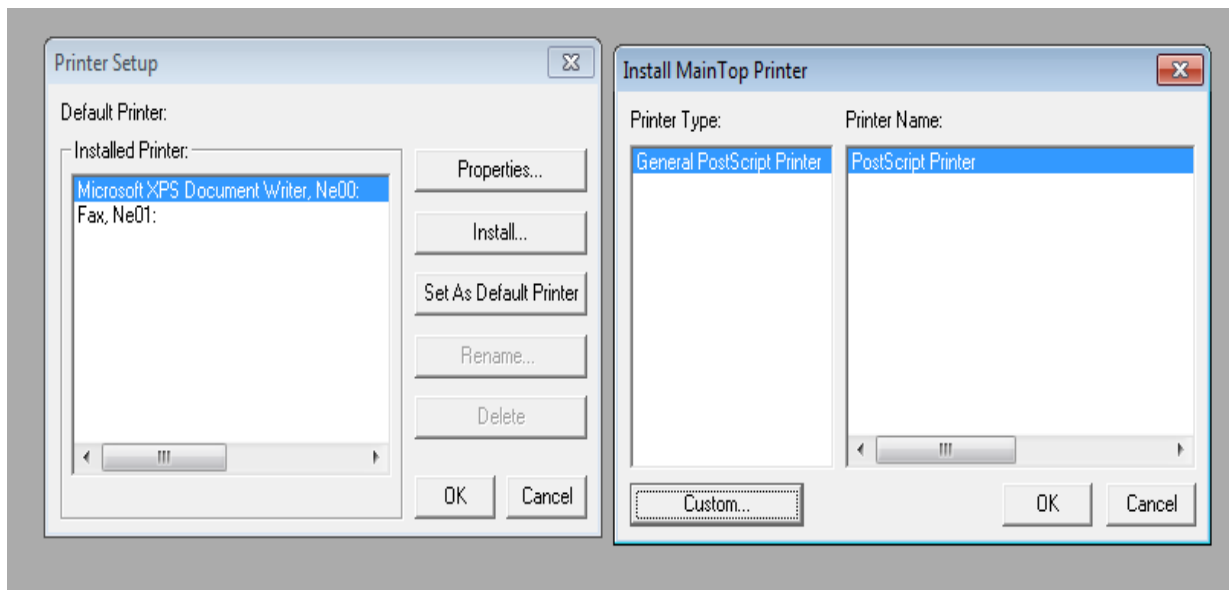
Best Printing Machine Limited 30-17

Website: [Http://www.zsheatpress.com](http://www.zsheatpress.com)

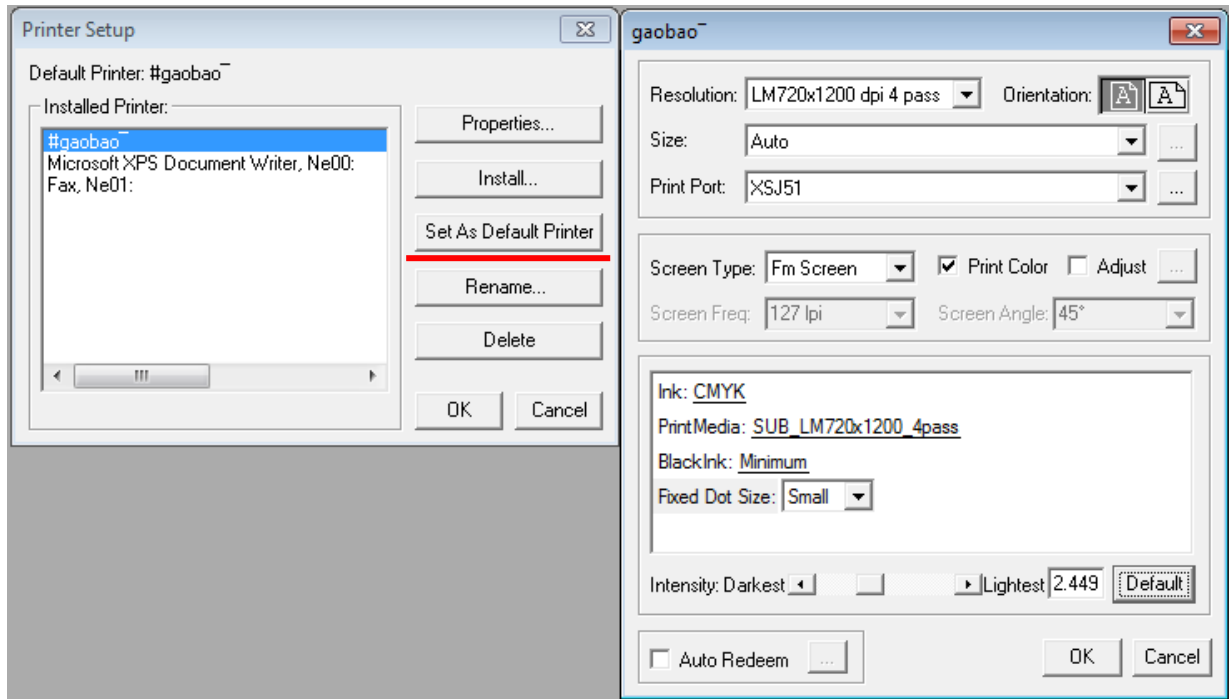
Email: sales@zsheatpress.com



4. 选择自定义打印机， 选择蒙泰专用曲线
4. Select the Default printer, and select the Maintop profile



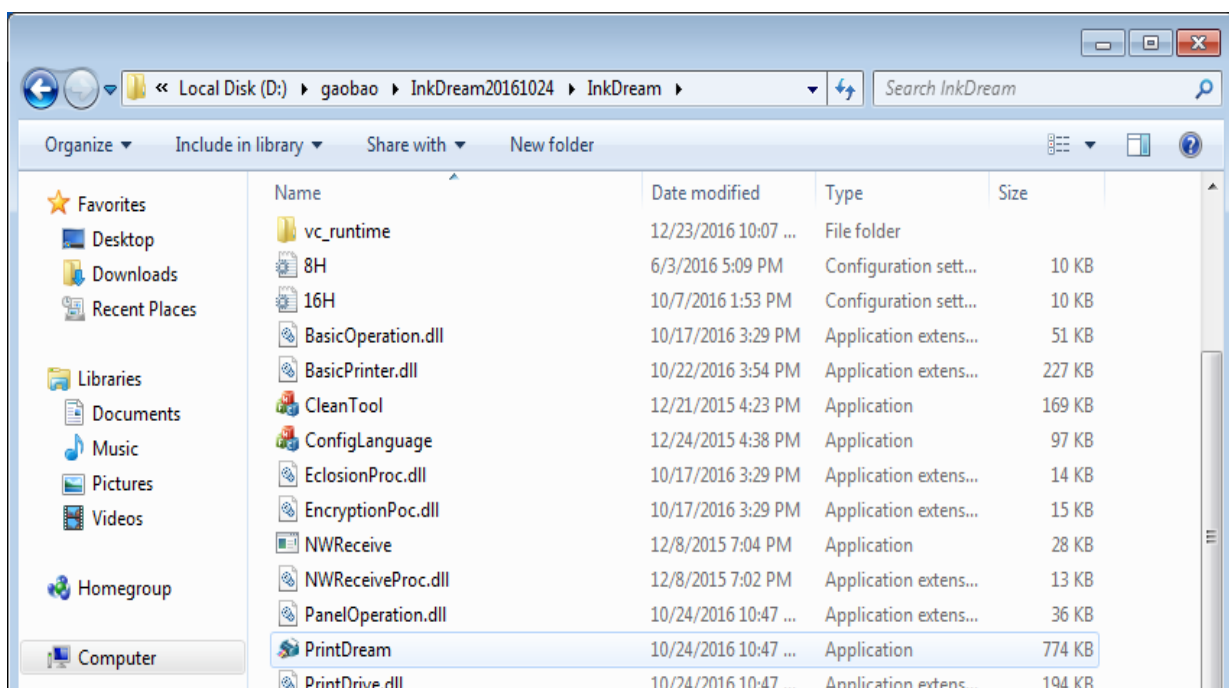
5. 设定打印机
5. Click" Properties" to set the printer



6. 完成设定后点: “设为默认打印机”

6. After setting , Click" Set as default printer

第五章 参数设置/Setting



1) Press " Printdream" , The setting screen will be display:

东莞市至上印花机械有限公司

Best Printing Machine Limited 30-19

Website: Http://www.zsheatpress .com

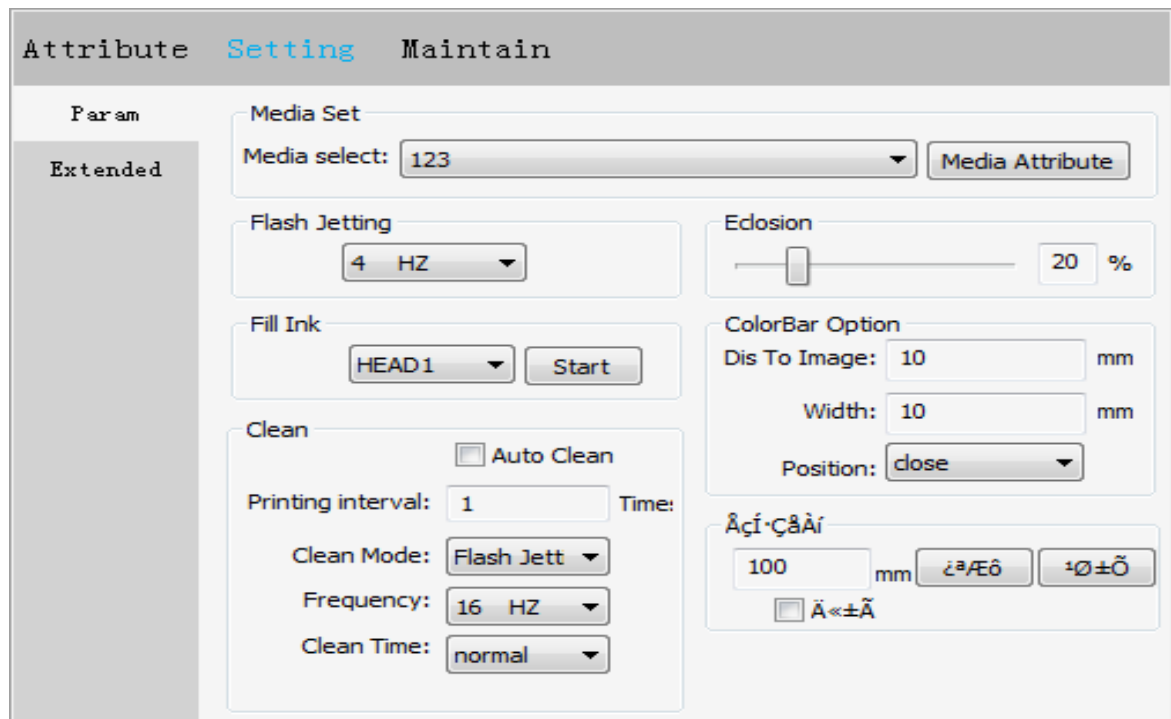
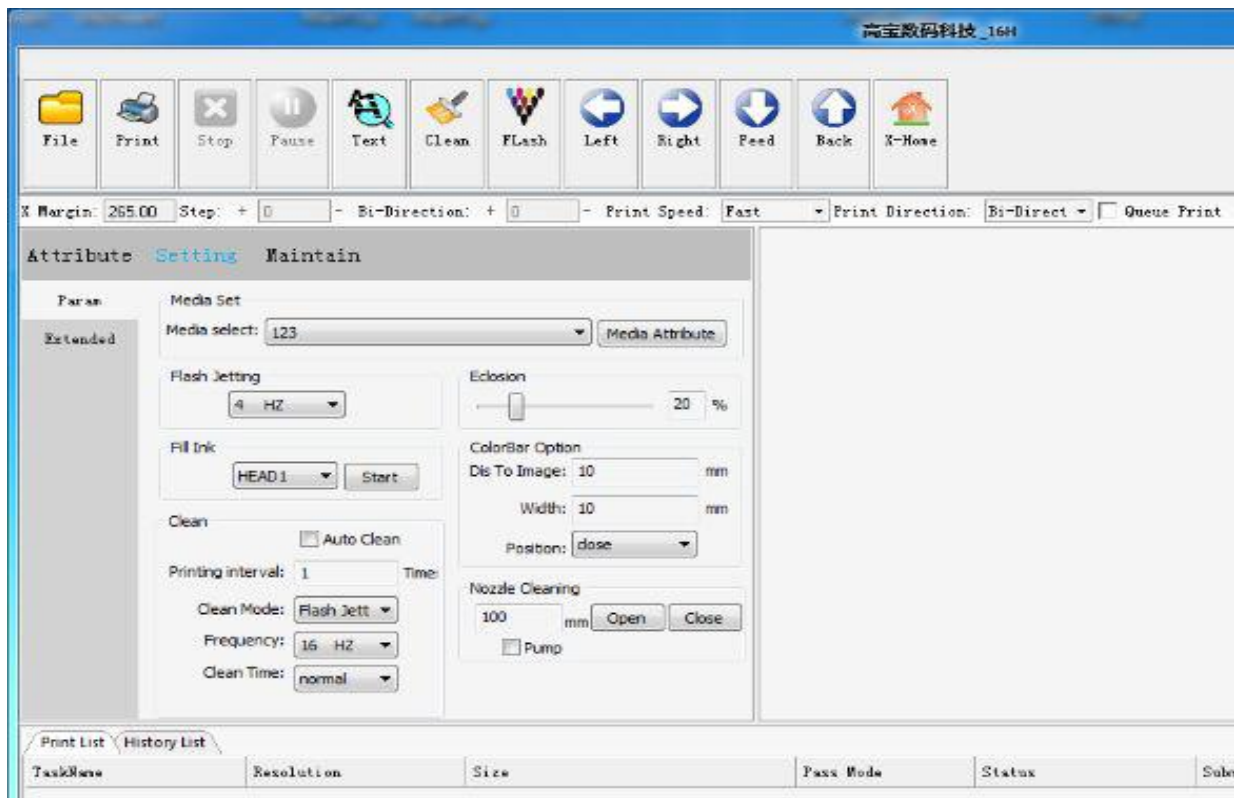
Email: sales@zsheatpress.com



材料设置/Media setting:

1) Print setting/ click [Param](#)-Enter into [Media set](#) screen.

1) 打印设置/ 根据材料不同进行参数设置。



东莞市至上印花机械有限公司

Best Printing Machine Limited 30-20

Website: [Http://www.zsheatpress.com](http://www.zsheatpress.com)

Email: sales@zsheatpress.com



1. 闪喷

闪喷频率：喷头闪喷频率幅度（1HZ-4KHZ）

1. Flash Jetting

Flashing frequency: nozzle flashing frequency range (1HZ-4KHZ)

2. 清洗

自动清洗：选取时为打印过程中自动清洗，自动清洗采用闪喷模式（根据以下设置的参数进行清洗）

打印次数间隔：打印多少次数后自动清洗

2. Clean

Automatic cleaning: Select the automatic cleaning process during printing, automatic cleaning using flash jet mode (according to the following parameters set to clean)

清洗模式：自动清洗采用闪喷模式

清洗闪喷频率：清洗时闪喷频率大小

清洗时间：设置自动清洗过程的时间

Print interval: How many times to print after the automatic cleaning

Cleaning mode: automatic cleaning with flash-jet mode

Cleaning flashing frequency: the size of flash frequency when cleaning

Cleaning time: Set the time for the automatic cleaning process

3. 自动跳白：空白的画面跳过不打印

3. Auto-skip: blank screen skip does not print

4. 边缘羽化：喷头边缘羽化，优化 PASS 道，可根据幅度值调节羽化效果

4. Eclosion : nozzle edge feathers, optimize the PASS Road, according to the amplitude value of regulation feather effect

5 彩条

彩条距离：彩条距离图像边缘的位置

彩条宽度：设置彩条宽度

彩条位置：彩条所在打印图像的位置（图左侧，图右侧，图两侧）可选。

5 color bar option

Distance to imagine: The position of the color bar from the edge of the image

Width: Set the color bar width

Position: The position where the color bar prints the image (left side of the figure, right side of the figure, both sides of the figure).

6. 走料

走料速度：材料进退速度（慢速，中速，快速）可选

6. Speed

Feeding speed: material advance and retreat speed (slow, medium speed, fast) optional

7. 均匀模式

选择均匀模式，可以更好的改善打印过程中的偶尔出现的深浅道问题，不选择图片打印的精度更高，

东莞市至上印花机械有限公司

Best Printing Machine Limited 30-21

Website: [Http://www.zsheatpress .com](http://www.zsheatpress.com)

Email: sales@zsheatpress.com



建议根据打印图片的不同选择正确的打印模式。

7. Uniform mode

Select the uniform mode, you can better improve the printing process, the occasional shadows, do not choose the image printing accuracy is higher, it is recommended according to the different print pictures choose the correct print mode.

8.打印完后自动走纸，打印完成任务后自动走纸

8. Automatically after printing paper, print the task automatically after the completion of paper

2) 偏差校正/Maintain

Press the":Maintain", Below screen will be shown,

Attribute

Setting

Maintain

Voltage Set

Calibration

Nozzles Adjust

Bi-Dir Calibration

Fast

-32

Print

Step Calibration

1 Pass

0.00

0

Print

Color Calibration

		CH01	CH02	CH03	CH04	CH05	CH06	CH07	CH08	
	G00	K	C	M	Y	Y	M	C	K	
	iüiý	0	0	0	0	0	0	0	0	
	<--	0	0	0	0	0	0	0	0	
	-->	0	0	0	0	0	0	0	0	
	G01	K	C	M	Y	Y	M	C	K	
	iüiý	0	0	0	0	0	0	0	0	
	<--	0	0	0	0	0	0	0	0	
	-->	1	1	1	1	1	1	1	1	

Print

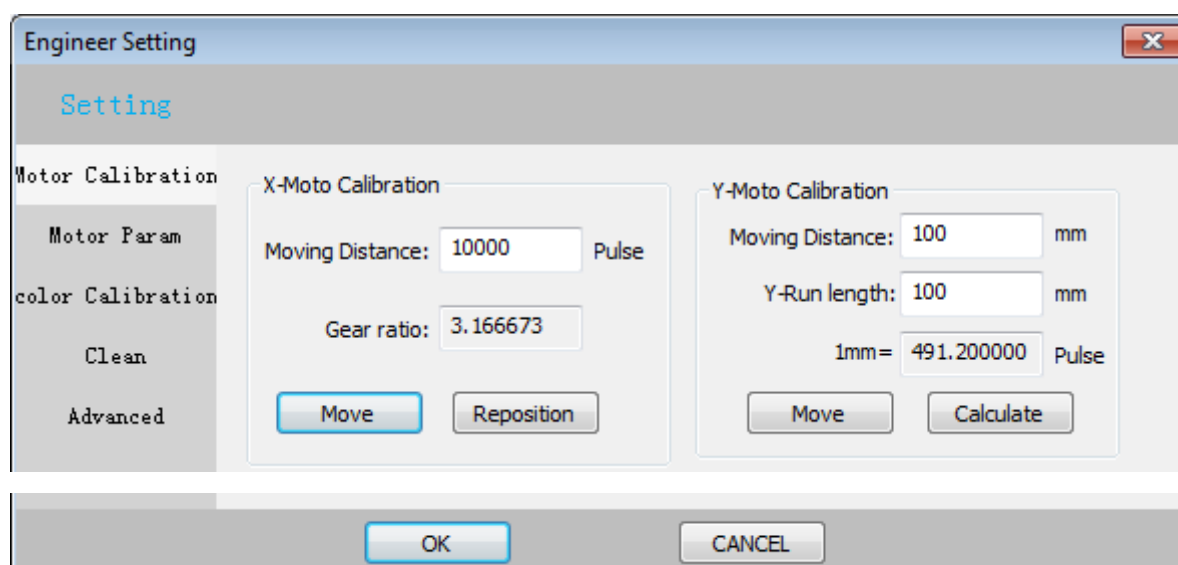


安装完软件后必须先进行横向齿轮比较准，再进行洗墨和其他效准。

After installing the software must first be more accurate lateral gear, and then wash the ink and other standards

一. 安装完软件后，连接后先效效准齿轮

- 1.按 “Ctrl+T”进入工程师模式
- 2.选择电机效准,X 电机效准
- 3.在移动距离输入 “180000” 点击移动，注意这时小车会向左移动
- 4.小车移支停止以后再点击复位
- 5.最后点击应用再确定，X 电机齿轮比较准完成



一. After installing the software, The gear ratio is calibrated first.

1. Press "Ctrl + T" to enter "[Engineer setting](#)"
2. Select "[Motor Calibration](#)"- [X motor Calibration](#)
3. In the "[Moving distance](#)" input "180000" click to move, note that the print-head move to the left
4. After the print-head stops moving, click [Reposition](#)
5. Finally click on the application to determine, X motor gear more accurate completion

二. 在没装喷头之前执行清洗操作，观看清洗动作是否正常，如有偏差可以执行下面操作来调节清洗动作的各项脉冲。（每次改完数字记得点应用再点确定才能保存）

Perform the cleaning operation before the nozzle is installed to observe whether the cleaning action is normal. If there is any deviation, you can perform the following operations to adjust the pulse of the cleaning action. (Each time you change the number of points to remember the point application to determine the point to save)

Engineer Setting

Setting

Motor Calibration Normal

Motor Param

color Calibration

Clean

Advanced

Pump Ink Time: 800 ms After Pump Ink Wait Time: 10000 ms

Flash Time: 10000 ms Pump Waste Ink Time: 5000 ms

Free Pump Ink Interval: 7483647 ms Free Pump Ink Time: 0 ms

Pump Ink Times: 1

MOTO_X

Flash Position: 0 mm Move Out X Scraping Position: 60 mm

Move Out X Scraping1 Position: 155 mm Move Out X Scraping2 Position: 255 mm

Move Out X Scraping3 Position: mm Move Out X Scraping4 Position: mm

InkStack

Flash Height: 0 Pulse Pump Ink Height: 10000 Pulse

Scrap Height: 4000 Pulse

Scrap

Move Out Scraping1 Distance: 4000 Pulse Move Out Scraping2 Distance: 1700 Pulse

Move Out Scraping3 Distance: Pulse Move Out Scraping4 Distance: Pulse

MOTO_Z

Flash Height: 0 mm Pump Ink Height: mm

Scrap Height: mm

HardWare Comfig

OK CANCEL

- 1.按“Ctrl+T”打开工程师模式
- 2.再点击清洗设置
- 3.选择清洗选项卡，在这里可以调节抽墨动作和各项脉冲。注意平台刮墨的脉冲不要设置的太高，防止在刮墨时平台太高会刮到喷头。

1. Press "Ctrl + T" to open the [Engineer setting](#)
2. Click [Clean](#) Settings
3. Select the Cleaning tab, where you can adjust the ink draw action and each pulse. Note that the platform scraping the pulse Do not set too high, to prevent the scraping ink when the platform is too high will be blown to the nozzle.

三. 检查安装好的两个喷头是否与平台平行，然后进行洗墨过程，让喷头有一个良好的状态。

Check the installed two spray heads are parallel to the platform, and then wash the ink process, so that the nozzle has a good state.

东莞市至上印花机械有限公司

Best Printing Machine Limited 30-24

Website: Http://www.zsheatpress.com

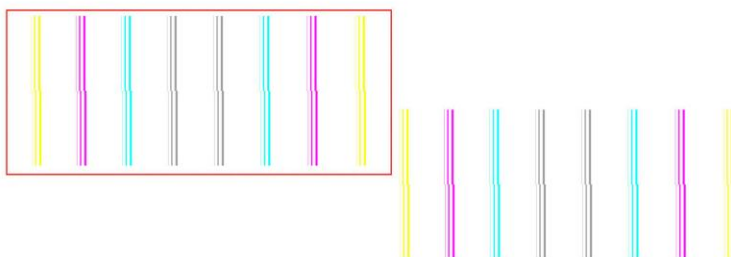
Email: sales@zsheatpress.com

Operating instructions

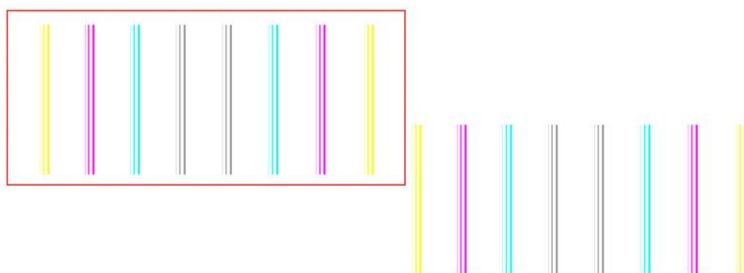
Nozzle calibration

四 Vertical alignment of sprinklers (Double-head alignment draw, Simple-head machine print in Red line frame)

1) Click Text- Vertical calibration(Below calibration drawing will be print)



2) By adjusting the horizontal tilt of the print head, the printed vertical alignment chart is straightened



五 Adjust the left and right direction of the two nozzles (Simple-head printer have no this)

1) Click text- Double head calibration (Below calibration drawing will be printed)



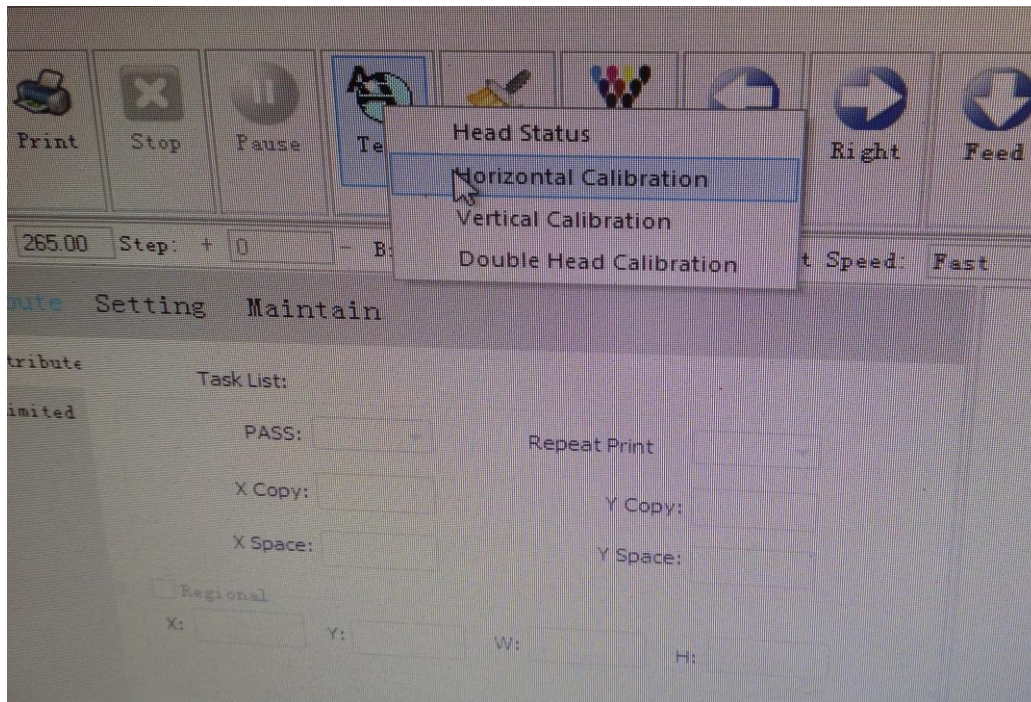
2) Click setting-Extend- distance between head 1 and Head 2. Please change the number to adjust.





六. 进行双向校准。

Perform bi-directional calibration



1. 在软件待机界面点击系统维护-校准设置
2. 选择双向校准--打印测试图（小车会打印测试图）

1. In the software standby screen, click [Maintain](#) - [Calibration](#) Settings
2. Select [Bi-Directional Calibration](#) - Print a test chart (the cart will print a test chart)



3. 根据上下▯形对称最直的数值更改软件参数进行加减，直到测试图中数值“0”的上下▯形为最直
3. According to the top and bottom of the undisputed symmetry of the most straightforward numerical changes in software parameters for addition and subtraction, until the test chart value "0" up and down the form of the most



东莞市至上印花机械有限公司

Best Printing Machine Limited 30-26

Website: [Http://www.zsheatpress.com](http://www.zsheatpress.com)

Email: sales@zsheatpress.com



七，进行步进校准/Step calibration

1.在软件待机界面点击系统维护-校准设置

2.选择步进校准-打印测试图（小车会印机测试图）

1. In the software standby screen, click System Maintenance - Calibration Settings

2. Select Step Calibration - Print Test Chart (Trolley Printer Test Chart)



3.在打出来的图上找到直线和斜线的重合并记住相对的数字。

4.在软件上更改正对应的对数。

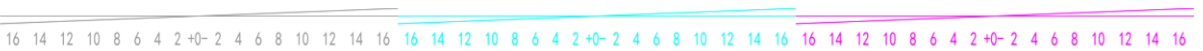
5.直到打出来校准图直线和斜线的重合点在 0 的位置

6.

3. in the fight out of the map to find the line and the slash of the coincidence and remember the relative figures.

4. Change the corresponding logarithm on the software.

5. until the calibration curve out of the line and the slash coincide with the location of the 0





第六章 错误代码/Error Code

Print Dream 打印控制软件错误代码

错误代码	错误信息描述	解决方案
Error Code	Description	Solution
10001	文件映射失败 File mapping failed	确认打印文件是否被其它软件的开 Make sure the print file is opened by other software
10002	马达停止失败 Motor stop failed	
10003	获取 X 光栅位置失败 Failed to acquire X raster position	检查 USB 连接是否正常并稳定 Check the USB connection is normal and stable
10004	马达运动当中 Motor running	
10005	启动马达失败 Motor startup failed	
10006	小车越过打印起始位置 The cart passes over the print start position	1. 确认 X 齿轮比是否正常 2. 电机能否左右高速运动 1. Check that the X gear ratio is normal 2. Motor can about high-speed movement
10007	未打印足够的列数 Not enough columns printed	1. 确认 X 齿轮比是否正常 2. 电机能否左右调整运动 3. 光迁通讯是否稳定（包刮喷头的供电） 1. Check that the X gear ratio is normal 2. Motor can adjust the movement around 3. Optical migration is stable (packet scraping nozzle power supply)
10008	写入数据到板卡错误 Write data error	检查 USB 连接是否正常并稳定 Check the USB connection is normal and stable
10009	马达复位中 Motor is reset	判断 X 电机是否处于运动状态 To determine whether the X motor is in motion
10010	动态分配内存失败 Dynamic allocation of memory failed	1. 检查电脑内存是否足够 2. 关闭一些不需要的软件 1. Check the computer memory is sufficient 2. Close some unwanted software...



10011	数据协议失败 Data protocol failed	
10012	读数据填充数据失败 Failed to read data Fill data	
10013	彩条数据填充数据失败 Color bar data Fill data failed	
10014	读数据失败 Failed to read data	确认打印文件 是否被其它软件打印 Make sure the print file is printed by another software
10015	打印动作线程异常 Print action thread exception	
10016	写数据线程异常 Write data thread exception	1. 确认 USB 是否连接正常 2. 确认光纤否正常 1. Make sure USB is connected properly 2. Check whether the fiber is normal
10017	数据处理线程异常 Data processing thread exception	
10018	处理 1PASS 数据异常 Dealing with 1PASS data exception	
10019	未打印清洗配置文件 Cleaning profile is not printed	确认软件目录下 <u>Config</u> 文件下 <u>Chac.c</u> 文件是否存在 Verify that the <u>Chac.c</u> file exists in the <u>Config</u> file under the software directory
10020	Z 轴位置计算线程错误 Z-axis position calculation thread error	
10021	打印未就绪 Printing is not ready	1. X 是否回到原点或闪喷位 2. 是否有其它动作正在执行 1. X return to the origin or flash bit 2. Is there any other action in progress?
10022	创建邮槽失败 Failed to create mail slot	确认 RIP-receive 是否关闭 Confirm RIP-Receive shut off and on



10023	<p>图像 YDPI 太小</p> <p>Drawing YDPI too small</p>	<p>确认图片横向纵向精度，横向（X 方向）是否是光栅的倍数，纵向（Y 方向）是否是喷头物理数度的倍数</p> <p>(X direction) is a multiple of the grating, vertical (Y direction) is a multiple of the physical number of nozzles</p>
10024	<p>图像颜色不匹配</p> <p>The image colors do not match</p>	<p>确认图片颜色数量与当前软件配置的颜色数量是否一致（附：4 色加白能打印的颜色位 4 色和 5 色，不勾白墨打 4 色，勾上白墨打 5 色）</p> <p>Make sure the color of the picture is the same as the number of color of the current software configuration (attached: 4-color plus white 4-color and 5-color for printing, 4-color for white ink and 5 for white)</p>
10025	<p>超出宽幅</p> <p>Beyond the wide</p>	<p>1. 图片宽度是否超出机器最大打印宽度</p> <p>2. UV 灯喷头之间的距离及左灯到喷头 1 之间的距离是否设置过大</p> <p>1. Whether the width of the picture exceeds the maximum print width of the machine</p> <p>2. The distance between the UV lamp head and the distance between the left lamp and the nozzle 1 is too large</p>
10026	读 FLASH 错误 Read Flash error	
10027	分期错误 Date error	
10028	<p>42V 未开启</p> <p>42V not startup</p>	<p>1. 检查 42V 电源是否在 36V 到 45V 之间</p> <p>2. 检查喷头转接板是滞安装正确</p> <p>3. 检查喷头数据线是否安装正确</p> <p>4. 检查喷头转接板上的保险丝是否常</p> <p>5. 确认是否是喷头问题</p> <p>1. Check that the 42V power supply is between 36V and 45V</p> <p>2. Check that the nozzle adapter plate is properly installed</p> <p>3. Check the nozzle cable is installed correctly</p> <p>4. Check if the fuse on the adapter plate is regular</p> <p>5. Confirm whether the nozzle problem</p>
10029	<p>超出幅长</p> <p>Beyond the length</p>	<p>1. 确认图片高度是否超出机器设置的长度（由参数 dwMaDi stance of YMove 控制）</p> <p>2. 确认软件左下角 Y 位置是否为负数如果出现负数请勾选定位打印（附有 Y 轴定位功能才有可能报此错误）</p> <p>1. Make sure the height of the image exceeds the length set by the machine (controlled by the parameter dwMaDi stance of Y-)</p> <p>2. Check if the Y position in the lower left corner of the software is negative. If a negative number is selected, please check the position printing (Y axis positioning function may report this error)</p>
10030	<p>未检测到纸张</p> <p>Paper is not detected</p>	