

手动单轨小车

Manual Single Track Crab

起重量0.5-20吨

Lifting Capacity: 0.5 - 20t

Operation and Maintenance manual



说明书

一、功用

手动单轨小车 可悬挂在各式小型吊车或安装在固定的工字钢上,配以手拉葫芦组成完整的起重机械。对于工作效率要求不高的仓库,车间和电站,可作为安装,检修设备或吊运重物之用。

1. Function

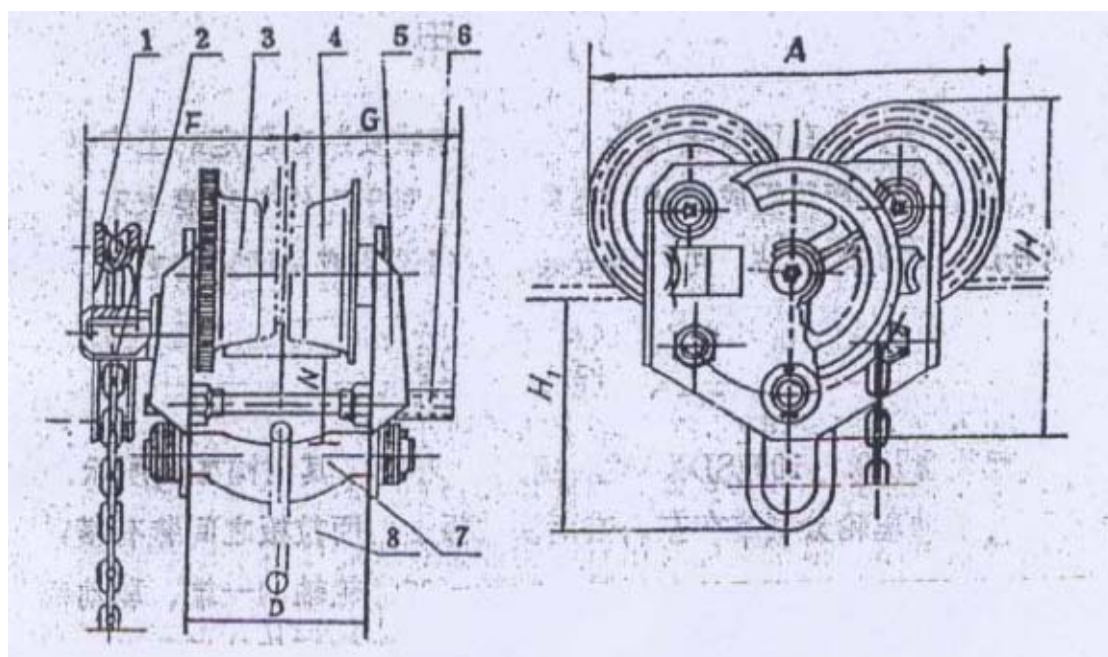
Manual single-track crab can be appended on different types of small crane or installed on the fixed T-steel with the assisted by manual hoist. This makes up of the completed crane. It can be use for installation, equipment repair or hoisting the heavy things at store, factory and power station, which is not, required higher working efficiency.

二、结构

起重量从 0.5-10 吨 SDX-3 型手动单轨小车,其结构如图所示。两对主从动车轮分别装在左右两块拉板上,两拉板之间装有横梁并用螺栓连接,横梁上有吊环,链轮装在齿轮轴的一端,驱动链轮则齿轮轴致使主动车轮旋转,小车即可沿工字钢作往返移动。

2. Structure

The manual single crab SDX-3 with hoist capacity from 0.5 to 10 tons, Its structure is described as the picture, there are two pairs of main and auxiliary wheel installed at the left and right board respectively, and there is a cross-hanger installed between the two board and connected with bolts. There is hung a hoist ring on the cross-hanger. The chain wheel is installed at a side of wheel bearing. The side wheel bearing of driving chain wheel drives the main wheel to rotate, therefore the crab can be moved back and forth along the T-steel.



1 chain wheel 2 wheel bearing 3 main wheel 4 auxiliary wheel
5 board 6 bolt 7 cross-hanger 8 hoist ring

三、规格及性能

起重量从 0.5-10 吨的 SDX-3 型手动单轨小车的规格及性能可参看图及表 1。

3. Specification and function

The specification and function of manual single crab SDX 3 with hoist capacity from 0.5 to

10 tons can be seen at picture and form 1.

表 1 FORM1

起重量 (t)Capacity	工字钢型号 I-steel specification	基本尺寸 (mm) basic dimensions							行走拉力 drawing capacity	总重量 total weight
		D	F	G	N	A	H	H1		
0.5	12.6	124	157	128	74.6	269	214	145	4 kg	16 kg
	14	132	161	124	73.9			144		
	16	140	165	128	73			143		
	18	144	167	118	72.3			152		
	20a	152	171	114	71.6			541		
	22a	160	175	110	70.7			140		
	25a	168	179	106	70			140		
1	16	134	164	161	68.1	300	242	158	6 kg	20 kg
	18	146	168	158	67.3			157		
	20a	150	170	155	66.6			156		
	22a	162	176	151	65.7			155.5		
	25a	166	178	147	65			155		
	28a	174	182	144	64.3			154		
	30a	178	184	142	63.6			153.5		
	32a	182	186	140	63			153		
	36a	186	188	137	62.2			152		
2	20a	156	173	150	64	344	274	174	12 kg	31 kg
	22a	164	177	146	63			173		
	25a	172	181	142	62			172		
	28a	180	185	138	61			171		
	30a	184	187	136	61			171		
	32a	188	189	134	60			170		
	36a	192	191	132	59			169		
	3	20a	196	193	130			59		
22a		170	228	181	82.7	222.7				
25a		178	231	177	82	222				
28a		182	234	175	81.3	221				
30a		186	236	173	80.6	220.6				
32a		190	238	171	80	220				
36a		198	242	167	79.2	219				
40a		202	244	165	78.5	218				
5	30a	186	195	178	80	425	354	240	20 kg	62 kg
	32a	190	197	176	79			239		
	36a	198	201	172	78			238		
	40a	202	203	170	77			237		
	45a	210	207	166	75			235		
	50a	218	217	162	74			234		
10	40a	226	277	231	75.5	550	450	285	25	144
	45a	234	281	227	74			284		
	50a	242	285	223	72			282		
	56a	250	289	219	71			281		

	63a	264	294	214	70			280		
--	-----	-----	-----	-----	----	--	--	-----	--	--

四、安装

手动单轨小车的安装，必须根据工字钢的规格不同，以调整垫调整拉板内“D”尺寸（按表尺寸）。

4. Installation

The installation of manual single track crab must be according to the different T-steel specification to adjust the D size inside the board by the adjust mat.(According to the form size)

五、润滑

手动单轨小车所有润滑处，必须每三个月注黄干油一次，以保证该机正常工作。

5. Lubrication

All the lubricant place of manual single track crab must be oiled with dried butter once every 3 months, in order to the machine under the normal working condition.

六、使用与维护

- (1) 使用时不得超过小车铭牌上所规定的起重量。
- (2) 运送货物时，重物不得在人头上越过。
- (3) 操作者应站在与手链轮同一平面内拉动手链条，不要在与手链轮不同平面的斜向拉动手链条。
- (4) 拉动手链条时，用力应均匀和缓，不要用力过猛。

6. use and maintenance

- (1) The weight cannot be over the designed weight described on the crab nameplate.
- (2) When delivering the cargo, it cannot be overpass from people.
- (3) The operator should stand at the same plane with the manual chain wheel and pull the manual chain, do not stand at the different plane with the manual chain wheel and pull the manual chain.
- (4) When pulling the manual chain, it should pull stable rather than jerk.

七、滚动轴承目录

所有轴承均根据 GB276-64 采用单列向心球轴承。

7. rolling bearing directory

All the bearing should use the single row centripetal ball bearing according to GB276-64

起重量(t)capacity	0.5	1	2	3	5	10
轴承代号 bearing no	轴承数量 bearing quality					
403	4					
404		4				
405			4			
406				4		
407					4	
410						4
105	2	2	2			
106				2	2	
107						2