



Test Report

Report No.: HLF15012273E

Date: Dec 30, 2015

Page 1 of 6

Applicant : SHENZHEN TAMPRINTER ORGANIC SILICONE CO., LTD

Address : NO.12,6 ZU TANBEIYICUN, GUANLAN DISTRICT, SHENZHEN CITY518110,CHINA

The following sample(s) and sample information was/were submitted and identified by/on behalf of the client

Sample Name : Pad printing silicone
Sample Model : 4845AB, 506AB, 626AB
Sample Lot : /
Sample Received Date : Dec 25, 2015
Test Completed Date : Dec 30, 2015
Test Method : Refer to the next page(s).
Test Results : Refer to the next page(s).

Test Requested	Conclusion
RoHS Directive 2011/65/EU Annex II – Lead(Pb), Cadmium(Cd), Mercury(Hg), Hexavalent Chromium(CrVI), Polybrominated Biphenyls (PBBs), Polybrominated Biphenyl Ethers(PBDEs)	PASS
Halogen free requirement in Standard IEC 61249-2-21 – Halogen	PASS

Reviewed by:

Lab Senior Engineer

Authorized Signature:

Technology Manager

In no circumstances shall the Company's responsibility extend beyond inspection, testing and reporting upon the samples actually drawn from the bulk and inspected, tested and surveyed by the Company and any inference to be drawn from the results of such inspection or survey or testing shall be entirely in the discretion and at the sole and exclusive responsibility of the Principal. This test report cannot be reproduced except in full.

FLION TESTING TECHNOLOGIES

Add: Gangzi Industrial Park, Furong Industrial Area, Xinqiao Village, Shajing Town, Bao'an District, Shenzhen City

Tel : 86-0755-2724 8885

Fax : 86-0755-2746 0090

Http://www.cnfft.com





Test Report

Report No.: HLF15012273E

Date: Dec 30, 2015

Page 2 of 6

Pb, Cd, Hg, Cr(VI), PBBs, PBDEs Test Results:

Test Item	Test method/Instrument	MDL (mg/kg)	Result (mg/kg)	Limit (mg/kg)
			A+B	
Lead(Pb)	IEC62321-5:2013/ICP-OES	2	N.D.	1000
Cadmium(Cd)	IEC62321-5:2013/ICP-OES	2	N.D.	100
Mercury(Hg)	IEC62321-4:2013/ICP-OES	2	N.D.	1000
Hexavalent Chromium(CrVI)	IEC62321:2008 /UV-VIS	2	N.D.	1000
Sum of PBBs	-	-	N.D.	1000
Monobromobiphenyl	IEC62321:2008 /GC-MS	5	N.D.	--
Dibromobiphenyl	IEC62321:2008 /GC-MS	5	N.D.	--
Tribromobiphenyl	IEC62321:2008 /GC-MS	5	N.D.	--
Tetrabromobiphenyl	IEC62321:2008 /GC-MS	5	N.D.	--
Pentabromodiphenyl	IEC62321:2008 /GC-MS	5	N.D.	--
Hexabromobiphenyl	IEC62321:2008 /GC-MS	5	N.D.	--
Heptabromobiphenyl	IEC62321:2008 /GC-MS	5	N.D.	--
Octabromobiphenyl	IEC62321:2008 /GC-MS	5	N.D.	--
Nonabromobiphenyl	IEC62321:2008 /GC-MS	5	N.D.	--
Decabromobiphenyl	IEC62321:2008 /GC-MS	5	N.D.	--
Sum of PBDEs	-	-	N.D.	1000
Monobromobiphenyl ether	IEC62321:2008 /GC-MS	5	N.D.	--
Dibromobiphenyl ether	IEC62321:2008 /GC-MS	5	N.D.	--
Tribromobiphenyl ether	IEC62321:2008 /GC-MS	5	N.D.	--
Tetrabromobiphenyl ether	IEC62321:2008 /GC-MS	5	N.D.	--
Pentabromobiphenyl ether	IEC62321:2008 /GC-MS	5	N.D.	--
Hexabromobiphenyl ether	IEC62321:2008 /GC-MS	5	N.D.	--
Heptabromobiphenyl ether	IEC62321:2008 /GC-MS	5	N.D.	--
Octabromobiphenyl ether	IEC62321:2008 /GC-MS	5	N.D.	--
Nonabromobiphenyl ether	IEC62321:2008 /GC-MS	5	N.D.	--
Decabromobiphenyl ether	IEC62321:2008 /GC-MS	5	N.D.	--

Note:

- (1) 1 mg/kg = 1 ppm = 0.0001%
- (2) N.D. = Not Detected (less than MDL)
- (3) MDL = Method Detection Limit
- (4) "--" = Not Regulated

In no circumstances shall the Company's responsibility extend beyond inspection, testing and reporting upon the samples actually drawn from the bulk and inspected, tested and surveyed by the Company and any inference to be drawn from the results of such inspection or survey or testing shall be entirely in the discretion and at the sole and exclusive responsibility of the Principal. This test report cannot be reproduced except in full.

FLION TESTING TECHNOLOGIES

Add: Gangzi Industrial Park, Furong Industrial Area, Xinqiao Village, Shajing Town, Bao'an District, Shenzhen City

Tel : 86-0755-2724 8885

Fax : 86-0755-2746 0090

Http://www.cnfft.com





Test Report

Report No.: HLF15012273E

Date: Dec 30, 2015

Page 3 of 6

Halogen Test Results:

Test Item	Test Method / Instrument	MDL (mg/kg)	Result (mg/kg)	Limit (mg/kg)
			A+B	
Fluorine(F)	EN14582(2007) & EPA9056A(2007) / IC	50	N.D.	--
Chlorine(Cl)	EN14582(2007) & EPA9056A(2007) / IC	50	154	900
Bromine(Br)	EN14582(2007) & EPA9056A(2007) / IC	50	N.D.	900
Iodine(I)	EN14582(2007) & EPA9056A(2007) / IC	50	N.D.	--
Chlorine(Cl)+Bromine(Br)	-	-	154	1500

Note:

- (1) 1 mg/kg = 1 ppm = 0.0001%
- (2) N.D. = Not Detected (less than MDL)
- (3) MDL = Method Detection Limit
- (4) "--" = Not Regulated

In no circumstances shall the Company's responsibility extend beyond inspection, testing and reporting upon the samples actually drawn from the bulk and inspected, tested and surveyed by the Company and any inference to be drawn from the results of such inspection or survey or testing shall be entirely in the discretion and at the sole and exclusive responsibility of the Principal. This test report cannot be reproduced except in full.

FLION TESTING TECHNOLOGIES

Add: Gangzi Industrial Park, Furong Industrial Area, Xinqiao Village, Shajing Town, Bao'an District, Shenzhen City

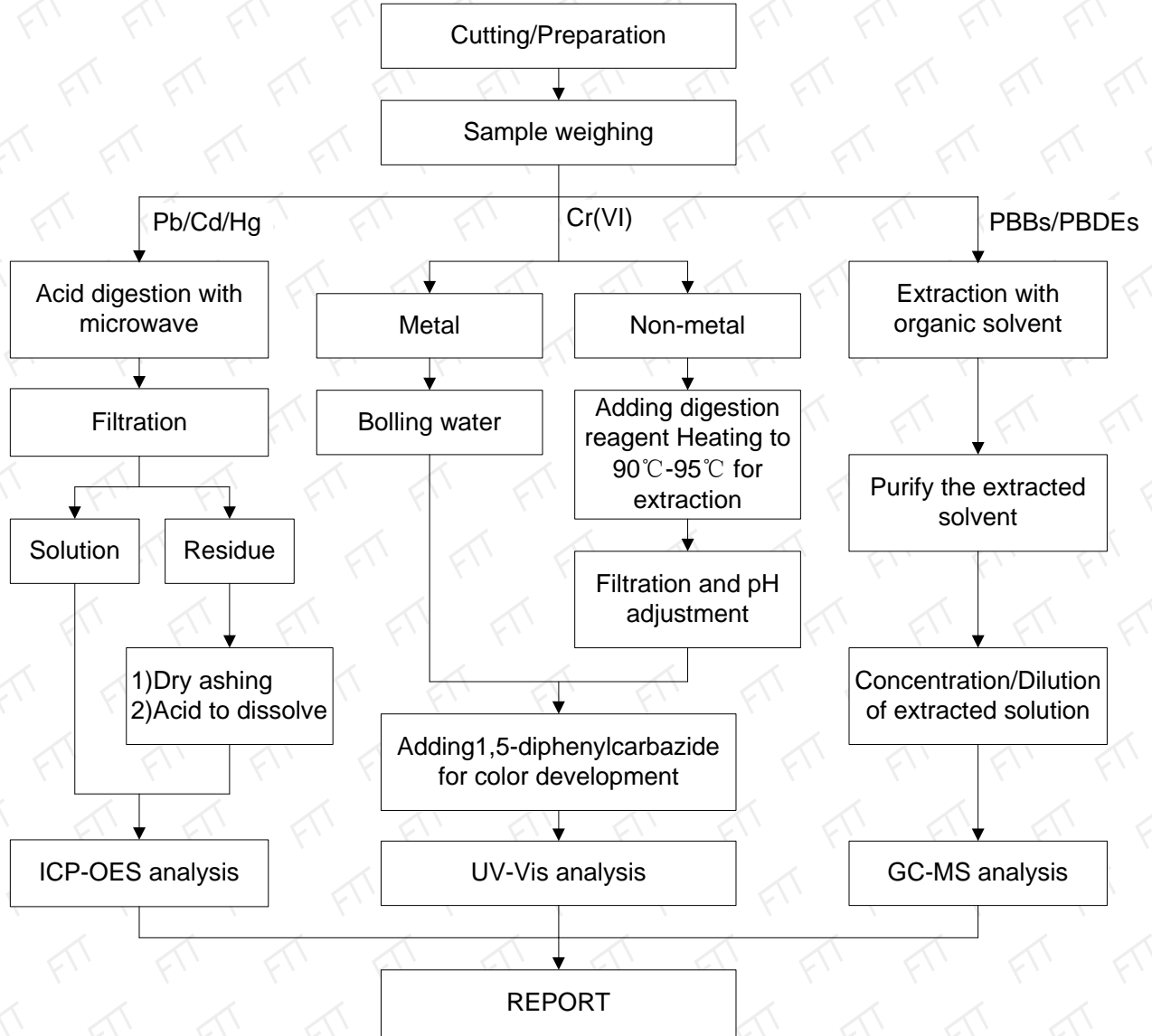
Tel : 86-0755-2724 8885

Fax : 86-0755-2746 0090

Http://www.cnftt.com



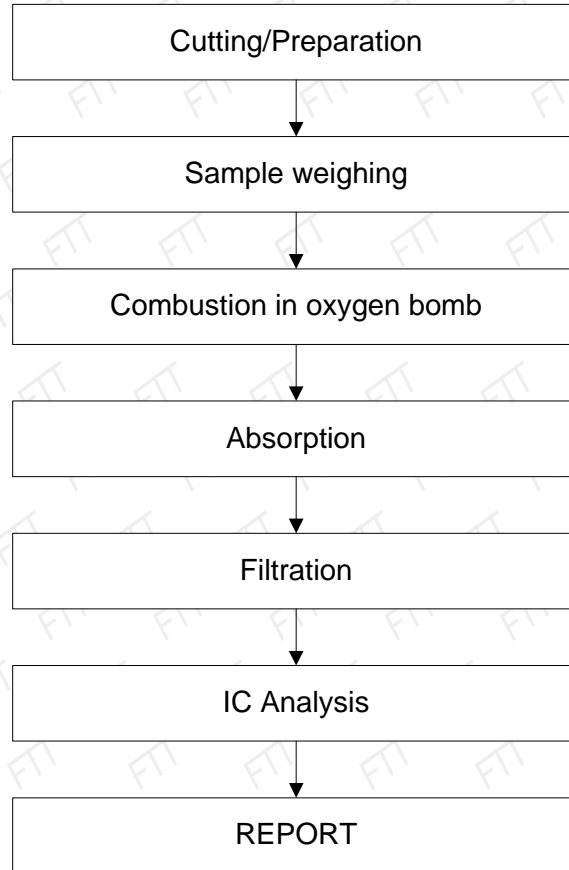
Pb, Cd, Hg, Cr(VI), PBBs, PBDEs Testing Flow Chart:



In no circumstances shall the Company's responsibility extend beyond inspection, testing and reporting upon the samples actually drawn from the bulk and inspected, tested and surveyed by the Company and any inference to be drawn from the results of such inspection or survey or testing shall be entirely in the discretion and at the sole and exclusive responsibility of the Principal. This test report cannot be reproduced except in full.



Halogen Testing Flow Chart:



In no circumstances shall the Company's responsibility extend beyond inspection, testing and reporting upon the samples actually drawn from the bulk and inspected, tested and surveyed by the Company and any inference to be drawn from the results of such inspection or survey or testing shall be entirely in the discretion and at the sole and exclusive responsibility of the Principal. This test report cannot be reproduced except in full.

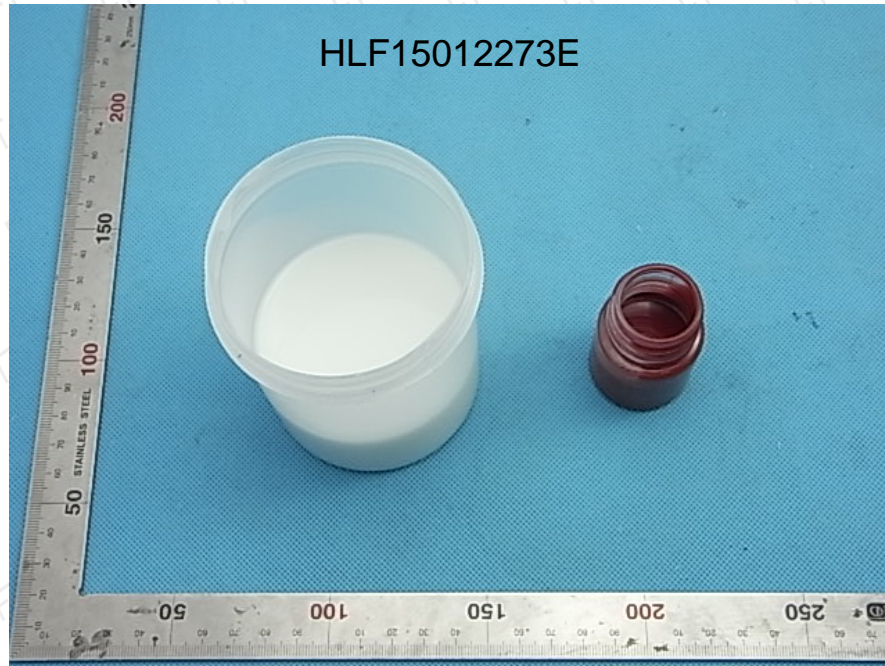


Test Part Description:

A: White glue

B: Red glue

Sample Photo



Remark: According to client's requirement, samples provided by the white glue and red glue mixed according to the ratio of 9:1 sampling test

Note: The results shown in this report refer only to the sample(s) tested.

***** End of Report *****

In no circumstances shall the Company's responsibility extend beyond inspection, testing and reporting upon the samples actually drawn from the bulk and inspected, tested and surveyed by the Company and any inference to be drawn from the results of such inspection or survey or testing shall be entirely in the discretion and at the sole and exclusive responsibility of the Principal. This test report cannot be reproduced except in full.

FLION TESTING TECHNOLOGIES

Add: Gangzi Industrial Park, Furong Industrial Area, Xinqiao Village, Shajing Town, Bao'an District, Shenzhen City

Tel : 86-0755-2724 8885

Fax : 86-0755-2746 0090

Http://www.cnfft.com

