

E-Tag Installation Manual



Catalogue

1. System Composition.....	3
2. Installation Method of E-Station.....	4
2.1 Connection Method of E-Station.....	4
2.2 Installation Method of E-Station Base.....	5
3. Installation/Replacement/Disassembly Method of E-Tag.....	6
3.1 Installation/Replacement/Disassembly Method of Rail Type E-Tag.....	7
3.2 Installation/Replacement/Disassembly Method of Suspension Type E-Tag.....	12
3.3 Installation/Replacement/Disassembly Method of Vertical Type E-Tag.....	15

1. System Composition

Conventional E-Tag System includes these devices (Picture 1-1):

- (1) E-Tag ESL Management Server (1 Set)
- (2) E-Tag Wireless E-Station(≥ 1 Set)
- (3) E-Tag ≥ 1 PCS
- (4) E-Touch Handheld PDA ≥ 1 Set



Picture 1-1

2. Installation Method of E-Station

2.1 Connection Method of E-Station

As the **picture 2-1-1**, the function of E-Station Connection

Port A、B、C Respectively is :

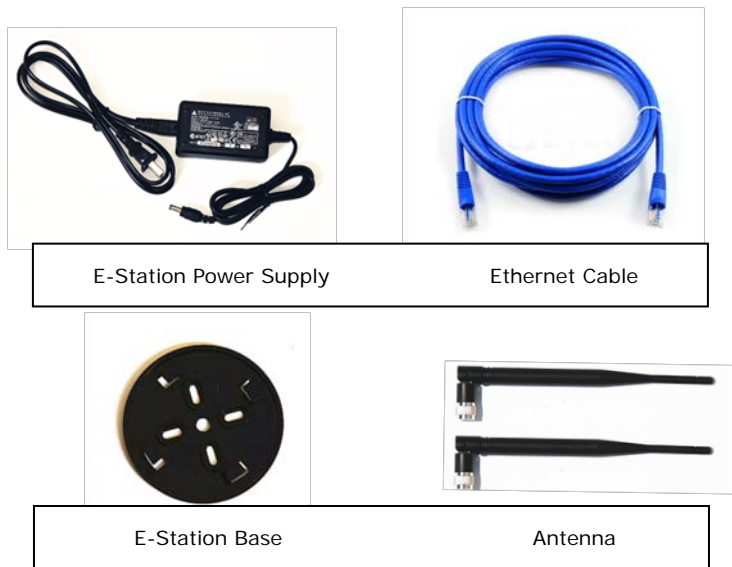
Port A: TCP/IP Connection Port (E-Station Connected to the Server)

Port B: 5V/2ADC Power Port(Connect and supply power to the E-Station)

Port C1、C2: E-Station Antenna Port



Picture 2-1-1



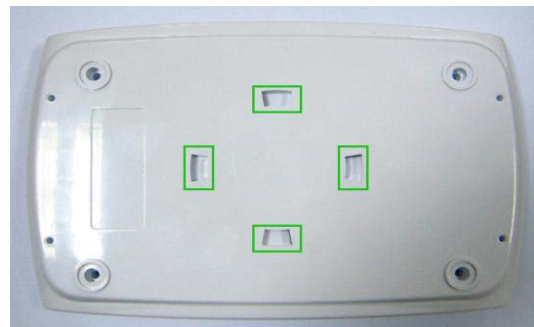
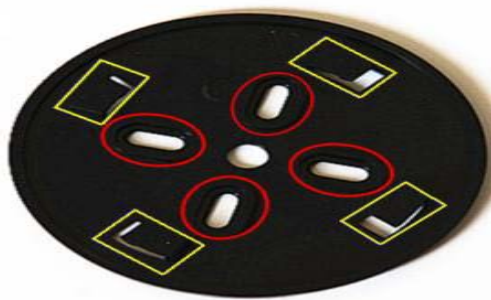
Picture 2-1-2

2.2 Installation Method of E-Station Base (Picture 2-2-1)

Red circle part: This part is fixed on the wall or other surface by screw.

Yellow and **Green** Square part: These parts are joints, to fix the base to the

E-Station bottom.



Picture 2-2-1



3. Installation/Replacement/Disassembly Method of

E-Tag (Picture 3-1)

E-Tag has 3 kinds of installation methods depend on different situations: Slideway Type, Suspension Type , Vertical Type.



Picture 3-1

3.1 Installation/Replacement/Disassembly Method of Rail

Type E-Tag

Before you installation Slideway Type E-Tag, you need to learn more about the installation accessories.

(1) **Slideway**(Picture 3-1-1): The Slideway is fixed on the goods shelf, to put

the E-Tag on it. There are grooves on up and down sides of the rail. E-Tag

slides into the rail from one side of the rail, and it can slide free to adjust

position on the rail. There is groove on the slideway and security rivet

beside the rail, to avoid E-Tag being theft and to realize anti-theft

function. It is splint and installation hole design behind slideway, to make

the slideway looks more compact.



Picture 3-1-1

- (2) **Security Rivet** (Picture 3-1-2): Fixed on both sides of rail, to avoid E-Tag

slipping out or being theft.



Picture 3-1-2

- (3) **Dovetail Nail** (Picture 3-1-3): To fix rail on the shelf.



Picture 3-1-3

- (4) **Detacher** (Picture 3-1-3): Special tool, to pick up Security Rivet.



Picture 3-1-3

Installation Method of Rail Type E-Tag

Step One: To fix rail on the shelf.

Firstly, turn up the back side of the rail, confirm the installation place of Dovetail

Nail depends on the length of rail. Using Dovetail Nail to fix the rail on the shelf

by electric drill, then make sure they are fixed well.



Picture 3-1-4

Step Two: To fix E-Tag on the rail.

To make the E-Tag slip through the rail from one side of the rail, and make sure

the tags can slip free. Then slip all the tags into the rail you need one by one.



Step Three: To fix the Security Rivet

To make a hole in the ends of the guide rail (about 8mm distance in the middle of the rail) by 2mm broach (You just need make the hole on front side of rail).

Then fix the Security Rivet on the rail, and make sure it is firm enough.



Step Four: To Adjust the Viewing Angle of E-Tag.

To adjust the angle between the front and back splint to make the best

performance. Fixed the angle by angle demodulator. Then we have finished fixing the slideway and tags.



Replacement and Disassembly Method of Rail Type E-Tag

Step One: Picking up the Security Rivet by Detacher



Step Two: Picking up the E-Tag and replace the new one on the rail, then adjust

the angle of the rail. Final, finishing Replacement and Disassembly.



3.2 Installation/Replacement/Disassembly Method of

Suspension Type E-Tag

Before you installation Suspension Type E-Tag, you need to learn more about

the installation accessories.

(1) Suspension Type E-Tag Holder



(2) E-Tag Ribbon



Installation Method of Suspension Type E-Tag

Step One: To fix the tag on the holder.

To put the tag on the holder, then push the tag into the holder (make sure the direction of the tag is correct with the holder).



Step Two: To fix the holder on the shelf hook.

Then fix the back side of the holder on the shelf hook.



Step Three: Making the E-Tag Ribbon through the Security hole of the tag.

Then fix the E-Tag Ribbon hard on the hook. Cutting down the redundant part of the E-Tag Ribbon. Final finishing installation.



Replacement and Disassembly Method of Suspension Type E-Tag

Cut down the ribbon by scissor, picking up the hook from the shelf, then picking up the E-Tag and holder, then replace new one as the steps above. Final, fixing the hook on the shelf.



3.3 Installation Method of Vertical Type E-Tag

Before you installation Vertical Type E-Tag, you need to learn more about the installation accessories.

(1) Vertical Type E-Tag Rack



(2) Sticker Button



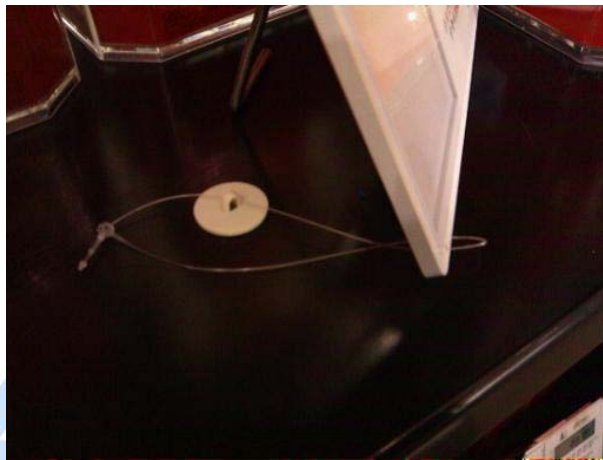
(3) E-Tag Seal Ribbon



Installation Method of Vertical Type E-Tag

Step One: Picking up the protection film on the tag surface.

Then fix the Sticker Button with the E-Tag by E-Tag Ribbon. Final to make sure they are well fixed.



Step Two: Picking up 3M Sticker under the Sticker Button.

Sticking the tag at the right place that you need. Then take out of the metal rack behind the E-Tag, adjust the angle and the place.



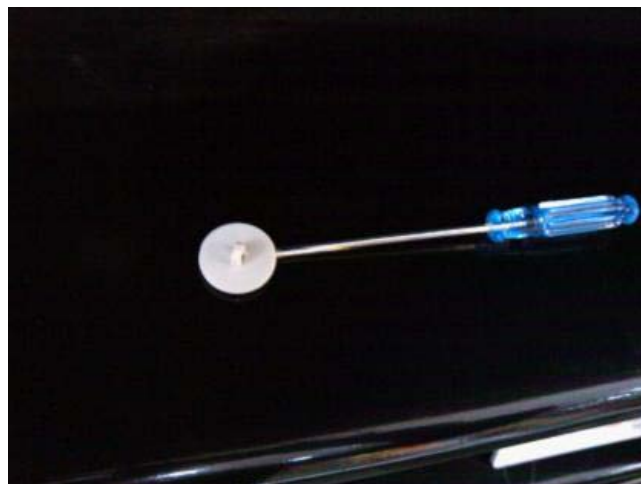
Step Three: Put the good's information paper into the left side groove of the tag. The paper size needs to be 92*64mm. Final, finishing installation.

Replacement and Disassembly Method of Vertical Type E-Tag

Step One: Cut down the E-Tag Ribbon, to separate the E-tag Rack with Sticker Button.

Step Two: If you need to replace the Vertical Type E-Tag, you need to replace the new one , do as Installation Method of Vertical Type E-Tag.

Final fishing Replacement.



If you need to dismantle Vertical Type E-Tag: Using flat head screw driver dismantle the sticker button, final finishing Disassembly.