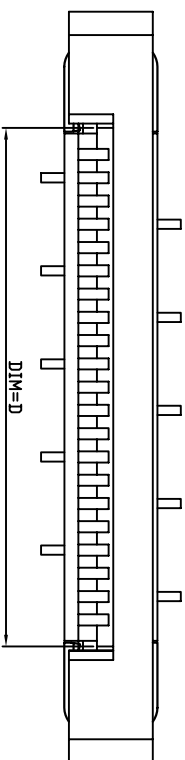
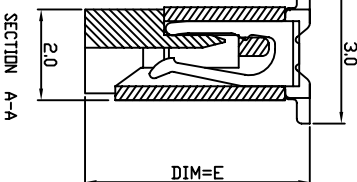
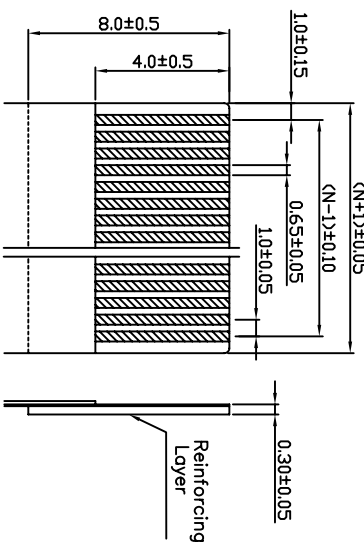
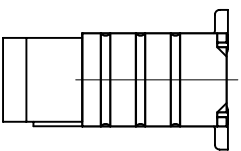
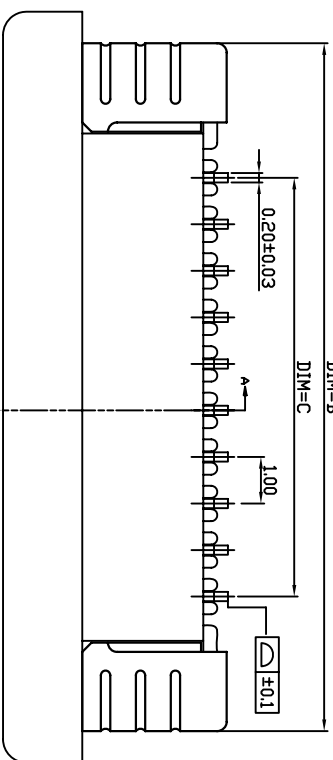
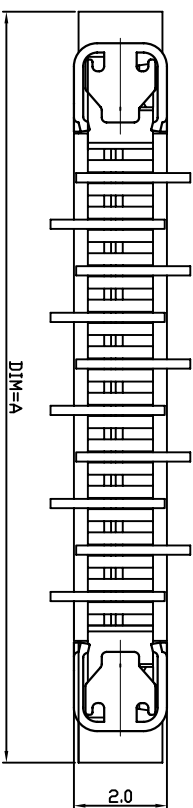
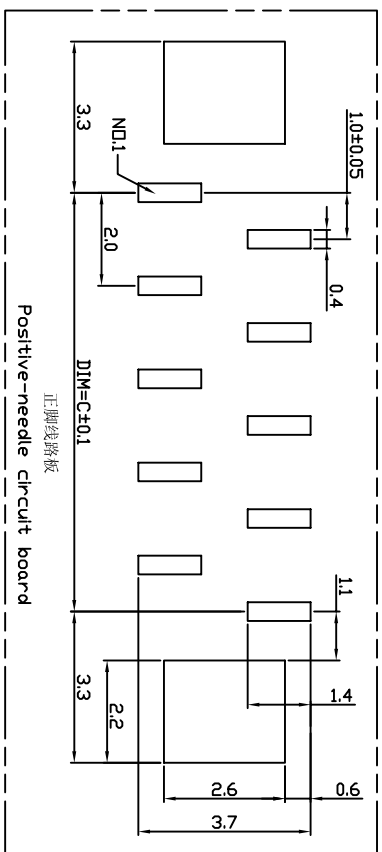


PIN数	DIM=A	DIM=B	DIM=C	DIM=D	DIM=E
30P	36.1	34.8	29.00	31.10	
29P	35.1	33.8	28.00	30.10	
28P	34.1	32.8	27.00	29.10	
27P	33.1	31.8	26.00	28.10	
26P	32.1	30.8	25.00	27.10	
25P	31.1	29.8	24.00	26.10	
24P	30.1	28.8	23.00	25.10	4.9
23P	29.1	27.8	22.00	24.10	
22P	28.1	26.8	21.00	23.10	
21P	27.1	25.8	20.00	22.10	
20P	26.1	24.8	19.00	21.10	
19P	25.1	23.8	18.00	20.10	
18P	24.1	22.8	17.00	19.10	
17P	23.1	21.8	16.00	18.10	
16P	22.1	20.8	15.00	17.10	
15P	21.1	19.8	14.00	16.10	
14P	20.1	18.8	13.00	15.10	
13P	19.1	17.8	12.00	14.10	
12P	18.1	16.8	11.00	13.10	
11P	17.1	15.8	10.00	12.10	
10P	16.1	14.8	9.00	11.10	4.4
9P	15.1	13.8	8.00	10.10	
8P	14.1	12.8	7.00	9.10	
7P	13.1	11.8	6.00	8.10	
6P	12.1	10.8	5.00	7.10	
5P	11.1	9.8	4.00	6.10	
4P	10.1	8.8	3.00	5.10	

NOTES:
 1.PLASTIC BURRS 0.1mm MAX
 2.PART NO. SPECIFICATION: 11-58-XX01-XX

NO. OF CONTACT CODE →
 Plating code:
 1: Tin-Leadplated
 2: Gold flash
 3: Gold 3μ'
 4: Gold 5μ'



东莞市宽拓电子科技有限公司
 Dongguan Kuantuo Electronics Co.,Ltd

UNLESS OTHERWISE SPECIFIED TOLERANCES ARE		APPROVED		PART NO.	
XX	±0.15 Δ	DATE	DATE	11-58-XX01-XX	
XXX	±0.05	CHECKED	DATE	DRAWING NO.	JB96*08005
XXX		DRAWN	DATE	COMPUTER NO.	RD00502
ANG.	±0°30'	物大流	2008/06/01	SCALE	SIZE NAME
MM		NUMBER	81	A3	FPC 1.0 CONNECTOR
		REV		A	

SER	AREA	REVISIONS	CHK	DATE
Δ				
Δ				
Δ				