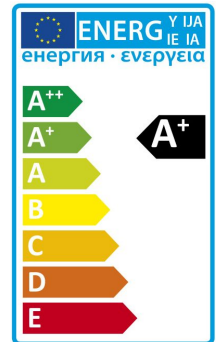


T8 LED Tube Light



100-240VAC Super-Bright Retrofit LED Tubes

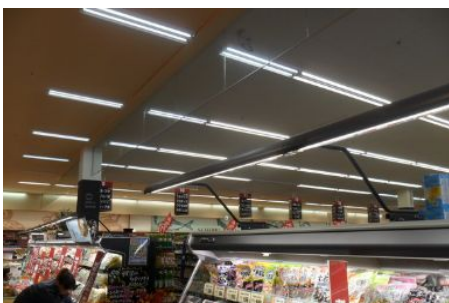
"Super-Bright" T8, T10 & T12 EASY-retrofit LED tubes delivering 50%-80% greater illumination than Fluoro tubes within a 120° quadrant. Eradicate mercury with exceptionally low power consumption and increased light quality for demanding applications. The best "lumen-for money" LED tubes on the market.



Main sizes: A=2ft (588mm) 4ft (1198mm) 5ft (1498mm) 8ft (2367mm)

Applications:

The premier and most comprehensive range of affordable mainstream LED retrofit bulbs and integrated LED system. Backed by photometrics and being Precision-engineered, these Tier 1 LEDs are produced with first-class components from the Taiwan. With up to 120lm/w high-luminosity, our high-efficiency LEDs come with a 'Full 3-Year replacement Guarantee'. We produce over 300 varieties to directly retrofit all existing popular light fittings. Our long-life, safety-certified products can be used near people and offer the consumer up to 90% savings on lighting energy bills and maintenance costs because they simply use 1/10 the energy of incandescent or Halogen bulbs of similar luminosity. Consuming less than 1/4 the energy of the short-life, vibration-prone Mercury Vapour, Sodium gas-discharge and Fluorescent lamps, they have overtaken them and the Mercury-laden Fluoro CFLs as the energy-efficient, yet healthy lighting source of choice.



Widely used in supermarket, factories, office, hotels, hospitals, commercial buildings, and so on.

Specifications

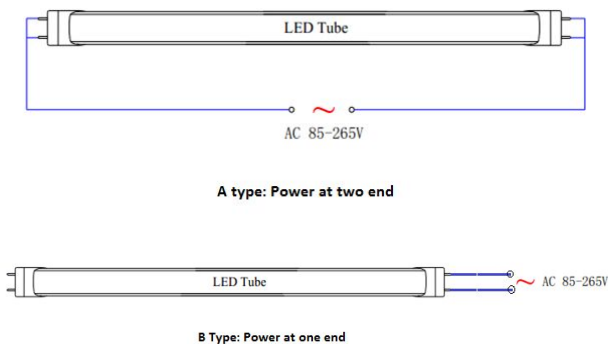
Max.Power	10W(2ft), 18W(4ft), 24W(5ft), 36W(8ft)
LED Class/Brand	Surface Mount Technology (SMT), Sanan 2835 SMD LEDs
Special Features	Internal LED Driver (EMC, LVD/Safety Certified)
LED Lifespan	50,000hours
IP Rating	Indoor IP54 (for outdoor, use appropriate fitting)
Luminosity (@Cool)	100-110 lm/w
Mains Voltage	85-265VAC
Beam Angle	120° standard
White Colour Temp (K)	Cool (6000), Day (4000), Warm (3000K)
Finish/Lens	Milk/Frosted, Clear Lens optional
Power Factor	>0.90 (Commercial/Industrial Grade) Emergency Class
CRI	75-85
Dimensions mm (in)	Dia: 26 (1") Length: 600, 1200, 1500, 2400
Weight	0.20Kg (2ft), 0.4KG (4ft), 0.55KG (5ft), 0.76KG (8ft)
Base/Caps	Standard G13 (2-pins 13mm apart) / Single PIN



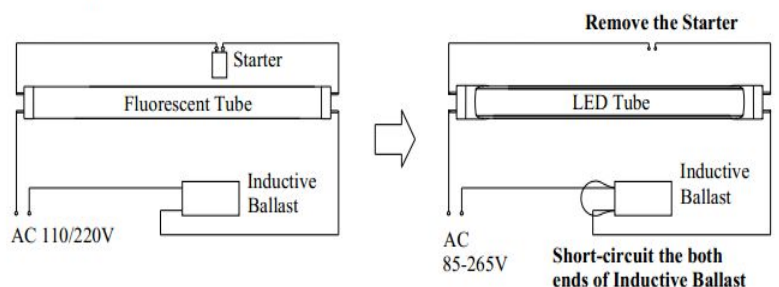
Model	Size	Watts	Lumen	Voltage	CTN size	CTN/QTY	G.W.
KL-T8-600-9W	2ft(600mm)	10W	1000 lm	AC85-265V	65*22*23cm	30pcs	6.5KG
KL-T8-1200-18W	4ft(1200mm)	18W	1900 lm	AC85-265V	125*22*23cm	30pcs	12.5KG
KL-T8-1500-24W	5ft(1500mm)	24W	2500 lm	AC85-265V	160*22*23cm	30pcs	16.5KG
KL-T8-2400-36W	8ft(2400mm)	36W	3800 lm	AC85-265V	246*22*23cm	30pcs	26.2KG

Installation:

A. Directly through the new joint use of electricity



B. Lamp bracket of Inductive Ballast



C. Lamp bracket of Electronic Ballast

