



# METALS INTERNATIONAL LIMITED

金属国际有限公司

1068 Wuzhong Road, Shanghai 201103, P.R. China  
Tel: +86-21-60900836/60900837 Fax: +86-21-60900838  
www.klsteel.com Email: metalsintl@klsteel.com

Page 1 of 5

## INSPECTION REPORT

Report No.: MIL 1755-12 KS

Issued on: May 14<sup>th</sup>, 2012

Inspection Time: May 10<sup>th</sup>&11<sup>th</sup>, 2012

P.O. No.  
A6JV-5-0002-PO/A6JV100297

Inspection Subject: Stainless Steel Welded Pipe

Specification: ASTM A312 Gr. TP316L

Inspector: Lin Gaojie

### Visit Summary:

#### Scope of Inspection

- Visual inspection.
- Dimension inspection.
- Packaging, quantity and marking inspection.
- Physical and Chemical analysis verification.
- Documents review.
- Part photo service.

### Results of inspection to MIL 1755-12 KS

#### ● Process Verification

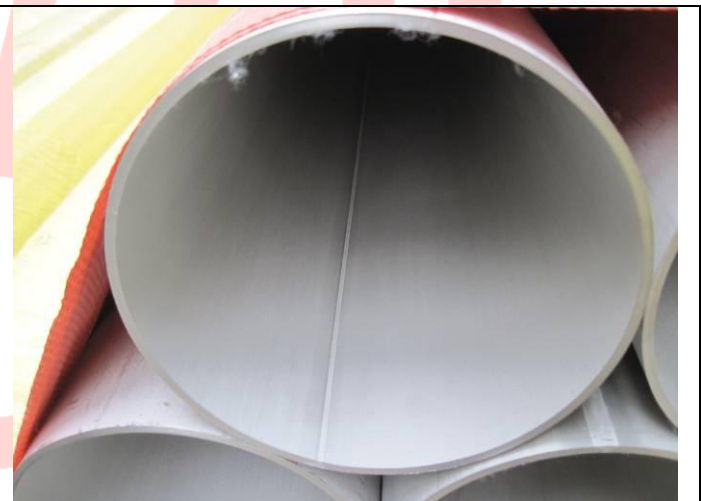
##### 1. Visual Inspection

The pipes were pickled well with plain ends.

Photo attachment as below



Pickled pipes



Plain end



# METALS INTERNATIONAL LIMITED

金属国际有限公司

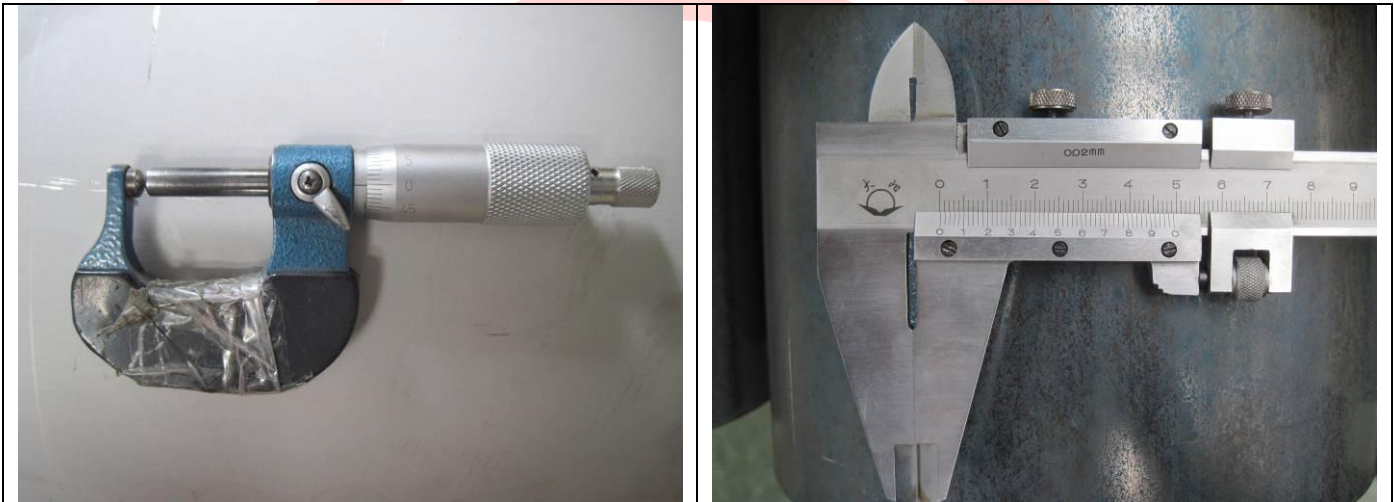
1068 Wuzhong Road, Shanghai 201103, P.R. China  
Tel: +86-21-60900836/60900837 Fax: +86-21-60900838  
www.klsteel.com Email: metalsintl@klsteel.com

## 2. Dimension inspection

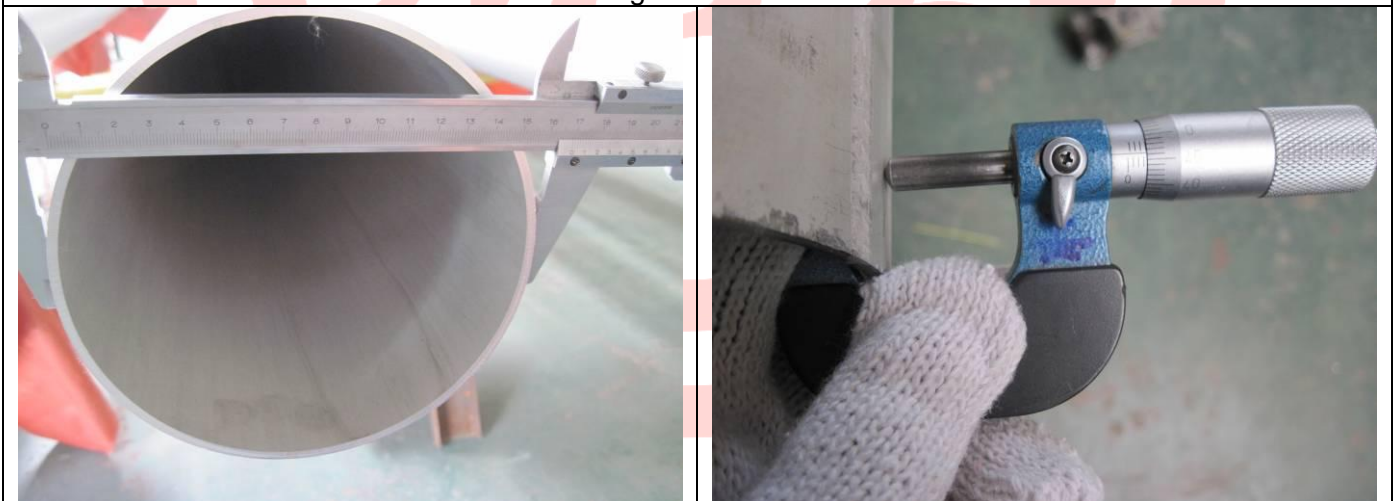
We had measured pipe dimensions randomly.  
The detailed data is in the following table.

| Size         | Heat No.     | Inspection Amount / pc | OD / mm     | WT / mm   | Length / mm |
|--------------|--------------|------------------------|-------------|-----------|-------------|
| 168.3*3.40mm | 11211240300  | 4                      | 167.8~169.1 | 3.46~3.60 | 6005~6014   |
| 219.1*3.76mm | 112109260100 | 3                      | 218.1~219.4 | 3.53~3.63 | 6010~6011   |
| 273.1*4.19mm | A2104364     | 1                      | 272.4~274.1 | 4.67~4.68 | 6001        |

Photo attachment as below



Gage calibration



Measuring OD

Measuring WT



# METALS INTERNATIONAL LIMITED

金属国际有限公司

1068 Wuzhong Road, Shanghai 201103, P.R. China

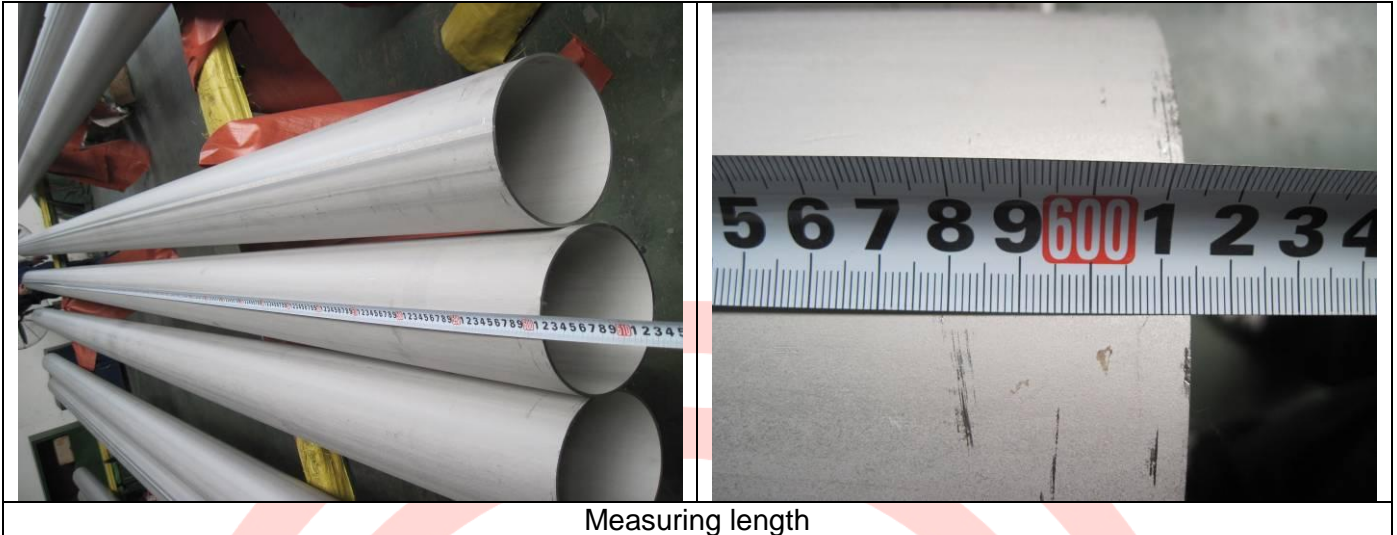
Tel: +86-21-60900836/60900837

Fax: +86-21-60900838

www.klsteel.com

Email: metalsintl@klsteel.com

Page 3 of 5



Measuring length

### 3. Packaging, quantity and marking inspection

- 1) The mill had fixed caps on both of pipe ends beveled and they were packaged by the polypropylene knitted bag;
- 2) The quantity was right;
- 3) The mark was right.

Photo attachment as below



Packaging



# METALS INTERNATIONAL LIMITED

金属国际有限公司

1068 Wuzhong Road, Shanghai 201103, P.R. China  
Tel: +86-21-60900836/60900837 Fax: +86-21-60900838  
www.klsteel.com Email: metalsintl@klsteel.com



Marking

#### 4. Physical and Chemical analysis verification

We had verifacated physical and chemical analysis of one sample. And they were all qualified.  
Photo attachment as below



Tensile Testing



T.G.B Test on HAZ



# METALS INTERNATIONAL LIMITED

金属国际有限公司

1068 Wuzhong Road, Shanghai 201103, P.R. China

Tel: +86-21-60900836/60900837

Fax: +86-21-60900838

www.klsteel.com

Email: metalsintl@klsteel.com

Page 5 of 5



Spectrographic Analysis

- **Review of Documentation**

Raw Material Test Certificate.

ET Record.

X-ray Test Record.

Physical and Chemical Inspection Report.

Inspection Report of Finished product.

- **Conclusions:**

The inspection results that the pipes are in full conformity with the Specifications.