

Palm Garden Four-wheel Articulated Transport Tractor

Engine: 1 cylinder diesel engine 25hp or 2 cylinder diesel engine 35HP.

Drive mode: four-drive/two-drive mode, switch at will.

Steering mode: articulated folding waist steering.

Brake: Breakage brake.

Loading weight: 2000-3000 KG.



Main machine pictures



Main machine pictures

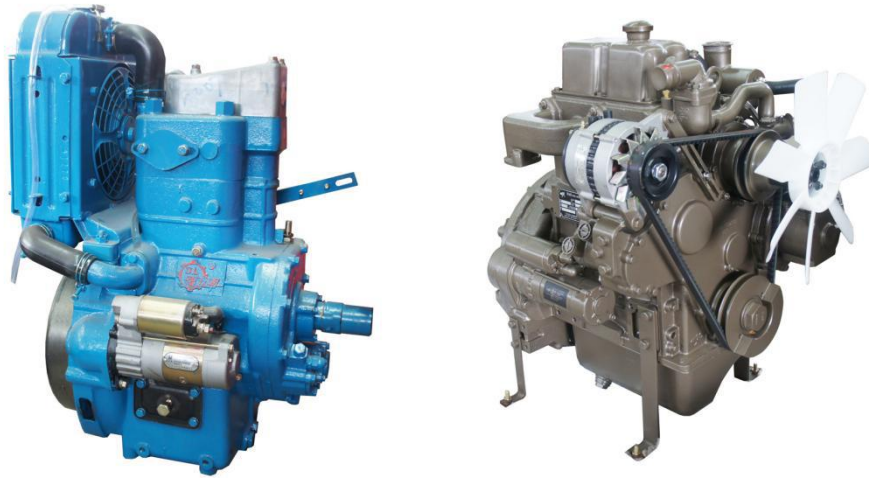


Main machine pictures



Model	WNJ-254/354
Start type	Electric
Engine	Deli diesel engine 1 cylinder 25HP JiangHuai diesel engine 2 cylinder 35HP
Engine power	14/25.74 kw/2300r/min
Break system	Rear axle Breakage brake
Tyre	1000-16 / 31.5-15
Drive type	4x2 / 4x4
Axle	Front 130 /rear1050
Net weight	1550 KG
Loading weight	2000 KG
Oveall size	4850x1600x1800 mm
Contain size	2400x1500x600 mm
Ground distance	220mm
Speed	0-40km/h
Gear box	Integral gearbox 4+1*2
Steering system	Articulated steering
Dump type	Double hydraulic dump

Engine Power system



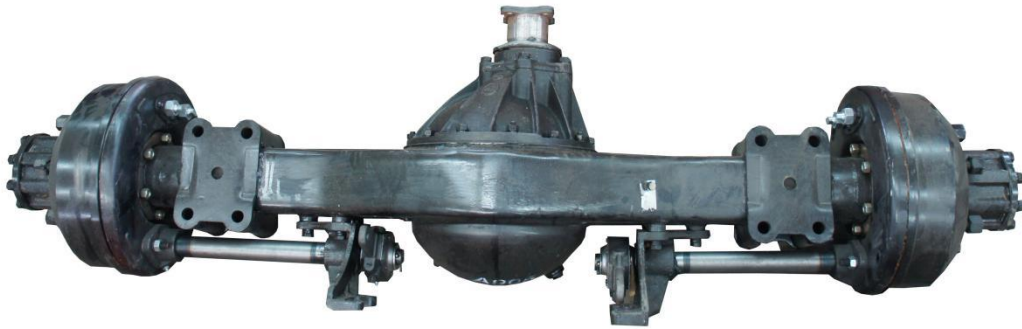
Configuration the Deli one cylinder diesel engine 25hp or Jianghuai /Yuchait two cylinder diesel engine 35HP.

Gear box system



Configuration the Integral gearbox, smaller size, lower failure rate, you can also choose 140 gearbox according to the work request.

Driving axle system



High-quality driving axle, front axle 130, rear axle 1050.

Operation panel



Operating panel: Integrated operation, simpler and more centralized operation.

Brake system



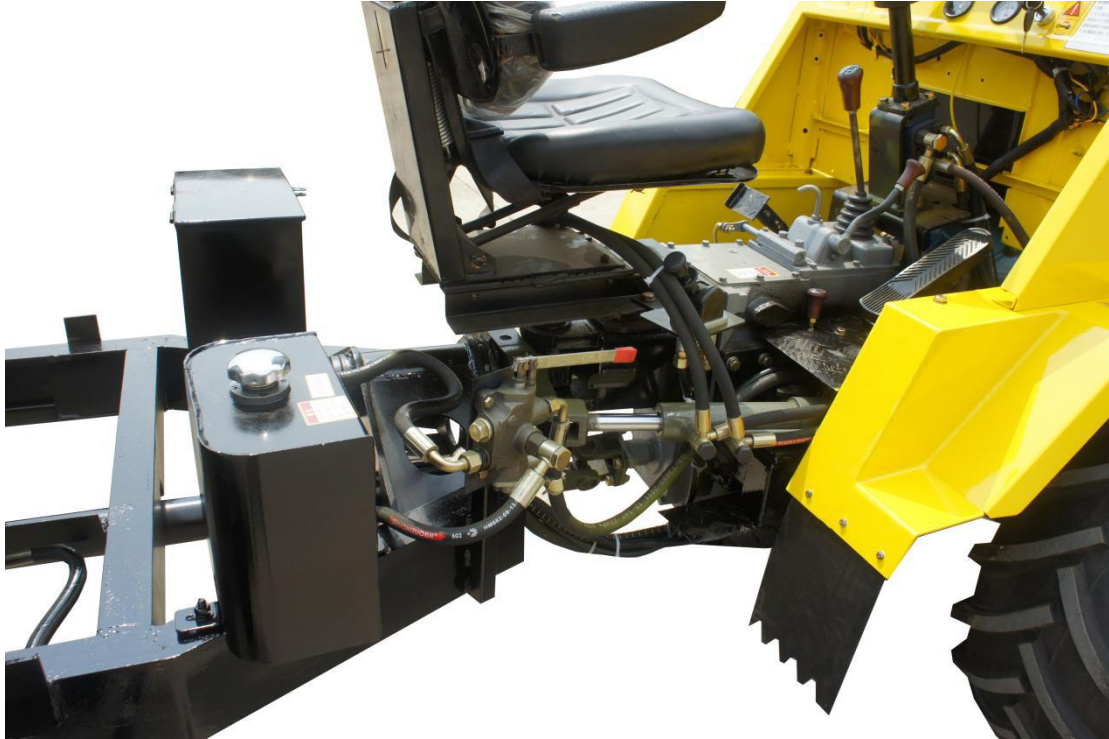
The rear axle is equipped with air-breaking brake, which is more suitable for mountain operation.

Hydraulic dump system



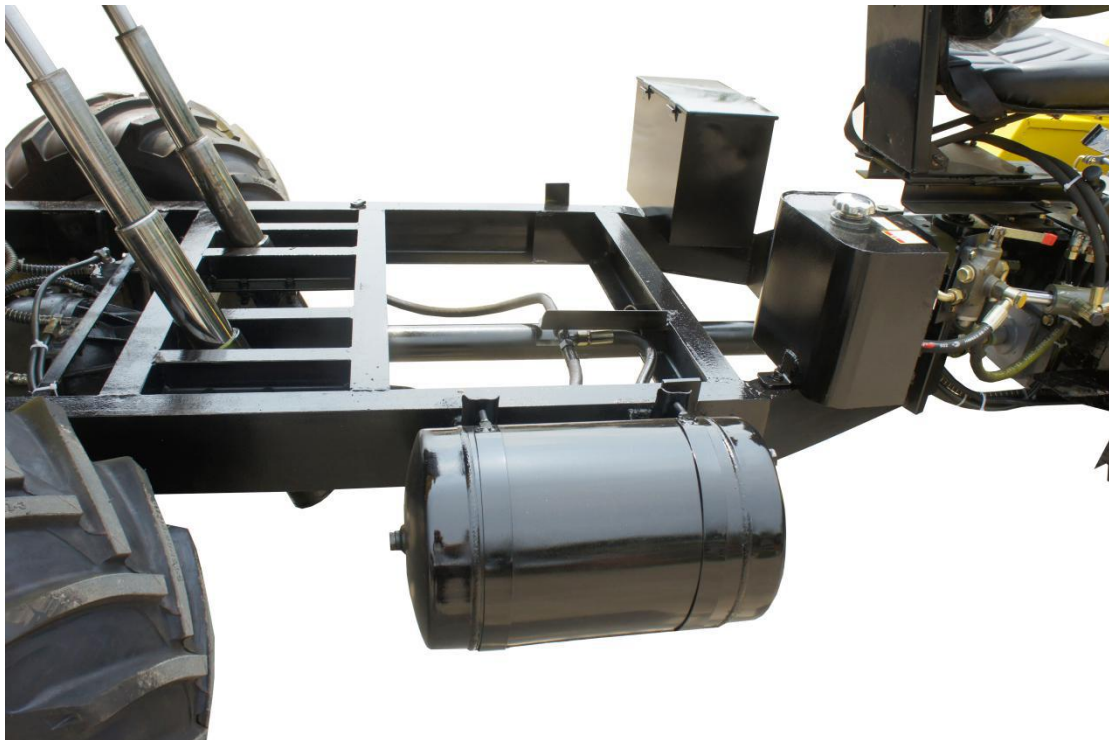
Dual hydraulic cylinder dumper is more stable.

Steering system



Steering system: smaller turning radius, more flexible.

Chassis structure



Upgraded chassis system has better throughput and bearing capacity.

Tyre Size



Ultra-wide and low-pressure tyres suitable for operation in tropical rainforest marshes.

Container customization



Conctainer size and shape can according to actual work request.