



WASTON 华森  
M E D I C A L

PROFESSIONAL  
RELIABLE

# TRAUMA CATALOGUE

Health is Important



## Introduction

Changzhou Waston Medical Appliance Co., Ltd, which is one of China's most dynamic and innovative surgical medical device manufacturers and service providers, was founded in 2002. It consists of five divisions, including the Orthopedics Department, Surgical Stapler Department, Thoracic Surgery Department, Surgical Instruments Department and New Product Development Department. Our company has three R&D and production bases, they are National Changzhou Hi-tech Industry Zone of Jiangsu, National Wujin Hi-tech Industry Zone of Jiangsu, and Science and Technology Center of Changzhou separately.

Version:190906

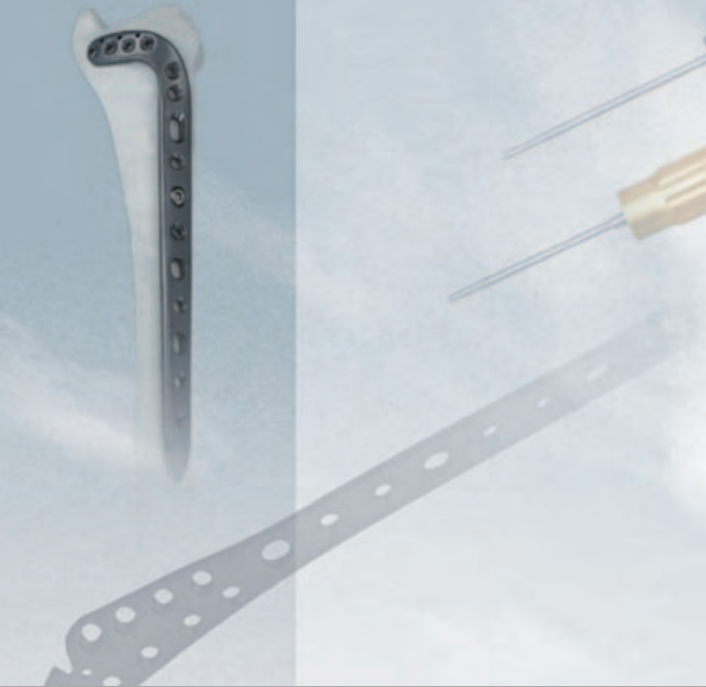


Waston's Orthopedics Department locates at Wujin National Hi-Tech Industry zone of Jiangsu. Our company covers an area of 100,000 m<sup>2</sup>, with standard factory 50,000 m<sup>2</sup>, purification plant 3,000 m<sup>2</sup> and R & D center 3,000m<sup>2</sup>. The company has workers with senior or above level who are responsible for the R&D, manufacture and management accounting for more than 40% of the total number of employees. We have a full set of international advanced equipment such as 5-axis machining centers, slitting machine tools, CNC machine tools and 3D printers. Relying on the Beijing Union Medical College Hospital, Beijing Military General Hospital, Southern Medical University, South China University of Technology, Suzhou University, Changzhou Science & Education Town and other institutions of technical support and close cooperation, Watson company has the domestic first-class R&D and processing capacity. In strict implementation of ISO and CMD standard operating, all the products have passed European Union CE certificates of TUV and parts of them have been proved by FDA With reliable quality, attentive service, WASTON is widely recognized within the industry in the domestic market.

Corporate philosophy: Create by heart, Share of development

Corporate mission and objectives:with rigorous scientific attitude, the concept of continuous innovation and a deep understanding of clinical medicine to research and develop high-quality medical products which fit the clinical and is easy-to-use. It may be waston's greatest happiness to be domestic and foreign customers trusted national brands.

# Locking Plate System



- Anatomical design according to human body bone, reducing the moulding need in operation and the implant irritation on soft tissue
- Avoid the loss of original and secondary reduction, less contact area between plates and periosteum, providing a fixed holding force sufficiently for both normal and osteoporosis bones
- Different screw fixation ways in the operation, using a combination of normal and locking screws, fully meet the needs of operation
- The locking screw be fixed in angle, increases the stability of internal fixation system, more suitable for comminuted fracture and osteoporosis in the elderly.
- Bevel design on plate end, convenient for minimally invasive insertion.

## 30700

Humerus Locking Plate



Used for humeral shaft fracture.

Screw: 10751 3.5 Locking Screw / 10503 3.5 Cortical Screw

Instrument Set: 15001-888 Small Bone Fragment Instrument Set

Product No.	Holes	Length(mm)
30700-005	5	69
30700-006	6	82
30700-007	7	95
30700-008	8	108
30700-009	9	121
30700-010	10	134
30700-011	11	147
30700-012	12	160

## 30701

Ulna & Radius Locking Plate



Used for ulna, radius fracture.

Screw: 10751 3.5 Locking Screw / 10503 3.5 Cortical Screw

Instrument Set: 15001-888 Small Fragment Instrument Set

Product No.	Holes	Length(mm)
30701-005	5	69
30701-006	6	82
30701-007	7	95
30701-008	8	108
30701-009	9	121
30701-010	10	134
30701-011	11	147
30701-012	12	160

### 30702

Tibia Locking Plate



Used for tibial shaft fracture.

Screw: 10755,10757 5.0 Locking Screw / 10508 4.5 Cortical Screw

Instrument Set: 15003-888 Large Bone Fragment Instrument Set

Product No.	Holes	Length(mm)
30702-006	6	109
30702-007	7	127
30702-008	8	145
30702-009	9	163
30702-010	10	181
30702-012	12	217
30702-014	14	253

### 30703

Femoral Locking Plate



Used for femur fracture.

Screw: 10755,10755 5.0 Locking Screw / 10508 4.5 Cortical Screw

Instrument Set: 15003-888 Large Bone Fragment Instrument Set

Product No.	Holes	Length(mm)
30703-006	6	110
30703-007	7	128
30703-008	8	146
30703-009	9	164
30703-010	10	182
30703-012	12	218
30703-014	14	254
30703-016	16	290
30703-018	18	326

## 10704

### Reconstruction Locking Plate I



Used for clavicle and fibular fracture.

Screw: 10751 3.5 Locking Screw / 10503 3.5 Cortical Screw

Instrument Set: 15001-888 Small Bone Fragment Instrument Set

+ 15005-999 Reconstruction Plate Instrument Set

Product No.	Holes	Length(mm)
10704-006	6	76
10704-007	7	88
10704-008	8	100
10704-009	9	112
10704-010	10	124
10704-012	12	148
10704-014	14	172
10704-016	16	196
10704-018	18	220

## 10743

### Curved Reconstruction Locking Plate



Used for pelvic fracture.

Screw: 10751 3.5 Locking Screw / 10503 3.5 Cortical Screw

Instrument Set: 15001-888 Small Bone Fragment Instrument Set

+ 15005-999 Reconstruction Plate Instrument Set

Product No.	Holes	Length(mm)
10743-006	6	71
10743-008	8	93.5
10743-010	10	115
10743-012	12	135

### 10732

S-clavicle Locking Plate II



Used for clavicle shaft fracture.

Screw: 10751 3.5 Locking Screw

10503 3.5 Cortical Screw

10520,10521 HB4.0 Cancellous screw

Instrument Set: 15001-888 Small Bone Fragment Instrument Set

Product No.		Holes	Length(mm)
10732-006	L	6	88
10732-106	R		
10732-007	L	7	101
10732-107	R		
10732-008	L	8	114
10732-108	R		
10732-010	L	10	137
10732-110	R		

### 10733

Extremitas Acromialis Clavicle Locking Plate (R/L)



Standard type is used for acromial end of clavicle fracture.

Extra-long type is used for acromial end and shaft of clavicle fracture.

Screw: Head part 10960 2.7 Locking Screw (20°)

Shaft part 10751 3.5 Locking Screw

10503 3.5 Cortical Screw

10520,10521 HB4.0 Cancellous Screw

Instrument Set: 15001-888 Small Bone Fragment Instrument Set

+ 15066-999 2.7 Locking Screw Instrument Set

	Product No.		Holes	Length(mm)
Standard	10733-003	L	3	61
	10733-103	R		
	10733-004	L	4	74
	10733-104	R		
	10733-005	L	5	87
	10733-105	R		
Extra-long	10733-006	L	6	100
	10733-106	R		
	10733-007	L	7	113
	10733-107	R		
	10733-008	L	8	126
	10733-108	R		



## 10734

### Clavicle Hook Locking Plate



Used for fracture of acromial end of clavicle (Neer II), dislocation of acromioclavicular joint (Tossy III).

Screw: 10751 3.5 Locking Screw

10503 3.5 Cortical Screw

10520,10521 HB4.0 Cancellous Screw

Instrument Set: 15001-888 Small Bone Fragment Instrument Set

Product No.		Holes	Length(mm)	Height(mm)
10734-004	L	4	63.5	12
10734-104	R			15
10734-204	L			18
10734-304	R			
10734-404	L	5	79	12
10734-504	R			15
10734-005	L			18
10734-105	R			
10734-205	L	6	94.5	12
10734-305	R			15
10734-405	L			18
10734-505	R			
10734-006	L	7	110	12
10734-106	R			15
10734-206	L			18
10734-306	R			
10734-406	L	7	110	12
10734-506	R			15
10734-007	L			18
10734-107	R			
10734-207	L	7	110	12
10734-307	R			15
10734-407	L			18
10734-507	R			

### 30708

Proximal Humeral Locking Plate II



Used for proximal humeral fracture.

Screw: 10751 3.5 Locking screw / 10503 3.5 Cortical Screw  
10520,10521 HB4.0 Cancellous Screw

Instrument Set: 15001-888 Small Bone Fragment Instrument Set

Product No.		Holes	Length(mm)
30708-003	L	3	90
30708-103	R		
30708-005	L	5	116
30708-105	R		
30708-007	L	7	142
30708-107	R		
30708-009	L	9	168
30708-109	R		
30708-011	L	11	194
30708-111	R		

### 30735

Proximal Humeral Locking Plate III



Used for proximal lateral humeral fracture.

Screw: 10751 3.5 Locking Screw / 10503 3.5 Cortical Screw  
10520,10521 4.0 Cancellous Screw

Instrument Set: 15001-888 Small Bone Fragment Instrument Set

Product No.	Holes	Length(mm)
30735-003	3	90
30735-004	4	102
30735-005	5	114
30735-006	6	146
30735-008	8	178
30735-010	10	210
30735-012	12	242

30718

Distal Medial Humeral Locking Plate



Product No.		Holes	Length(mm)
30718-003	L	3	58
30718-103	R		
30718-005	L	5	84
30718-105	R		
30718-007	L	7	110
30718-107	R		
30718-009	L	9	136
30718-109	R		
30718-011	L	11	162
30718-111	R		
30718-013	L	13	188
30718-113	R		

Used for distal medial humeral fracture, supracondylar fracture of humerus and nonunions of humeral fracture

Screw: Head Part 10960 2.7 Self-tapping Locking Screw (20°)

Shaft Part 10751 3.5 Locking Screw

10503 3.5 Cortical Screw

10520,10521 HB4.0 Cancellous Screw

Instrument Set: 15001-888 Small Bone Fragment Instrument Set

### 30719

Distal Lateral Humeral Locking Plate I



Used for distal humeral fracture, supracondylar fracture of humerus and nonunions of humeral fracture

Screw: Head part 10960 2.7 Self-tapping Locking Screw (20°)

Shaft part 10751 3.5 Locking Screw /

10503 3.5 Cortical Screw

10520,10521 HB4.0 Cancellous Screw

Instrument Set: 15001-888 Small Bone Fragment Instrument Set

Product No.		Holes	Length(mm)
30719-003	L	3	65
30719-103	R		
30719-005	L	5	91
30719-105	R		
30719-007	L	7	117
30719-107	R		
30719-009	L	9	143
30719-109	R		
30719-011	L	11	169
30719-111	R		
30719-013	L	13	195
30719-113	R		

### 30719

Distal lateral humeral Locking Plate II



Used for distal humeral fracture, supracondylar fracture of humerus and nonunions of humeral fracture

Screw: Head part 10960 2.7 Self-tapping Locking screw (20°)

Shaft part 10751 3.5 Locking Screw /

10503 3.5 Cortical Screw

10520,10521 HB4.0 Cancellous Screw

Instrument Set: 15001-888 Small Bone Fragment Instrument Set

Product No.		Holes	Length(mm)
30719-203	L	3	65
30719-303	R		
30719-205	L	5	91
30719-305	R		
30719-207	L	7	117
30719-307	R		
30719-209	L	9	143
30719-309	R		
30719-211	L	11	169
30719-311	R		
30719-213	L	13	195
30719-313	R		

30717

Olecranon Locking Plate



Product No.		Holes	Length(mm)
30717-103	L	3	93
30717-203	R		
30717-105	L	5	123
30717-205	R		
30717-107	L	7	149
30717-207	R		
30717-109	L	9	174.5
30717-209	R		
30717-111	L	11	200
30717-211	R		
30717-113	L	13	226
30717-213	R		

Used for proximal lateral ulnar fracture.

Screw: 10751 3.5 Locking Screw / 10503 3.5 Cortical Screw

Instrument Set: 15001-888 Small Bone Fragment Instrument Set

10709

Distal Medial Radius Locking Plate I



Product No.		Holes	Length(mm)
10709-003	L	3	52
10709-103	R		
10709-004	L	4	60
10709-104	R		
10709-005	L	5	68
10709-105	R		
10709-007	L	7	90
10709-107	R		

Used for distal radius fracture.

Screw: Head Part 10753-(110~130) 2.5 Self-tapping Locking Screw (Half-threaded)

10753-(310~330) 2.5 Self-tapping Locking Screw (Full-threaded)

10753-(210~230) 2.5 Self-tapping Screw (Full-threaded)

Shaft Part 10751 3.5 Locking Screw

Instrument Set: 15001-888 Small Bone Fragment Instrument Set

+ 15063-999 Distal Medial Radius Locking Plate Instrument Set

## 10709

### Distal Medial Radius Locking Plate (YAP)



Used for distal volar radius fracture.

Screw: Head Part 10753-(110~130) 2.5 Self-tapping Locking Screw (Half-threaded)  
 10753-(310~330) 2.5 Self-tapping Locking Screw (Full-threaded)  
 10753-(210~230) 2.5 Self-tapping Screw (Full-threaded)

Shaft Part 10751 3.5 Locking Screw / 10503 3.5 Cortical

Instrument Set: 15001-888 Small Bone Fragment Instrument Set

+ 15063-999 Distal Medial Radius Locking Plate Instrument Set

Product No.		Holes	Length(mm)
10709-403	L	3	59
10709-503	R		
10709-404	L	4	71
10709-504	R		
10709-405	L	5	83
10709-505	R		
10709-407	L	7	107
10709-507	R		

## 10901

### Distal Radius Volar Juxta-articular Locking Plate



Used for distal radius fracture.

Screw: Head Part 10961 2.5 Locking Screw (20°)

Shaft Part 10960 2.7 Locking Screw (20°)

10961 2.5 Locking Screw (20°)

10950 2.7 Screw /10951 2.5 Screw

Instrument Set: 15018-199 Ulna & Radius Locking Plate Instrument Set

+ 15063-999 Distal Radius Volar Locking Plate Instrument Set

Product No.		Holes	Length(mm)
10901-003	L	3	43
10901-103	R		
10901-004	L	4	52
10901-104	R		
10901-005	L	5	61
10901-105	R		

10902

Distal Radius Volar Extra-articular Locking Plate  
(4 head holes)



Product No.		Holes	Length(mm)
10902-003	L	3	47.8
10902-103	R		
10902-005	L	5	65.8
10902-105	R		

10902

Distal Radius Volar Extra-articular Locking Plate  
(5 head holes)



Product No.		Holes	Length(mm)
10902-203	L	3	48.5
10902-303	R		
10902-205	L	5	66.5
10902-305	R		

Used for distal radius fracture.

Screw: Head Part 10961 2.5 Locking Screw (20°)

Shaft Part 10960 2.7 Locking Screw (20°)

10961 2.5 Locking Screw (20°)

10950 2.7 Screw

10951 2.5 Self-tapping Screw

Instrument Set: 15018-199 Ulna & Radius Locking Plate Instrument Set

+ 15063-999 Distal Medial Radius Locking Plate Instrument Set



## 10903

### Distal Radius Volar Juxta-articular Locking Plate



Product No.		Holes	Length(mm)
10903-003	L	3	49
10903-103	R		
10903-004	L	4	58
10903-104	R		
10903-005	L	5	67
10903-105	R		

Used for distal radius fracture, especially for osteoporotic or comminuted fracture conditions.

Screw: Head Part 10961 2.5 Locking Screw (20°)

Shaft Part 10960 2.7 Locking Screw (20°)

10961 2.5 Locking Screw (20°)

10950 2.7 Self-tapping Screw / 10951 2.5 Self-tapping Screw

Instrument Set: 15018-199 Ulna & Radius Locking Plate Instrument Set

+ 15063-999 Distal Radius Volar Locking Plate Instrument Set

## 10904

### T-shaped Distal Radius Dorsal Locking Plate



Product No.	Holes	Length(mm)
10904-003	3	40
10904-104	4	49

Used for distal radius fracture with dorsal approach.

Screw: Head Part 10961 2.5 Locking Screw (20°)

Shaft Part 10960 2.7 Locking Screw (20°)

10961 2.5 Locking Screw (20°)

10950 2.7 Self-tapping Screw / 10951 2.5 Self-tapping Screw

Instrument Set: 15018-199 Ulna & Radius Locking Plate Instrument Set

+ 15063-999 Distal Radius Volar Locking Plate Instrument Set

10905

Oblique L-shaped Distal Radius Dorsal Locking Plate



Product No.		Holes	Length(mm)
10905-003	L	3	43
10905-103	R		
10905-004	L	4	52
10905-104	R		

10905

L-shaped Distal Radius Dorsal Locking Plate



Product No.		Holes	Length(mm)
10905-203	L	3	40
10905-303	R		
10905-204	L	4	49
10905-304	R		

10905

Small L-shaped Distal Radius Dorsal Locking Plate



Product No.		Holes	Length(mm)
10905-403	L	3	40
10905-503	R		
10905-405	L	4	49
10905-505	R		

Used for distal radius fracture with dorsal approach.

Screw: Head Part 10961 2.5 Locking Screw (20°)

Shaft Part 10960 2.7 Locking Screw (20°)

10961 2.5 Locking Screw (20°)

10950 2.7 Screw / 10951 2.5 Screw

Instrument Set: 15018-199 Ulna & Radius Locking Plate Instrument Set

## 10906

### Distal Radius Dorsal Radiocarpal Locking Plate



Used for distal radius fracture.

Screw: Head Part 10961 2.5 Locking Screw (20°)

Shaft Part 10960 2.7 Locking Screw (20°)

10961 2.5 Locking Screw (20°)

10950 2.7 Screw / 10951 2.5 Screw

Instrument Set: 15018-199 Ulna & Radius Locking Plate Instrument Set

+ 15063-999 Distal Radius Volar Locking Plate Instrument Set

Product No.	Holes	Length(mm)
10906-005	5	48
10906-006	6	57

## 10907

### Distal Radius T-shaped Locking Plate (Extra-long)



Used for distal radius with shaft fracture.

Screw: Head Part 10961 2.5 Locking Screw (20°)

Shaft Part 10960 2.7 Locking Screw (20°)

10961 2.5 Locking Screw (20°)

10950 2.7 Screw / 10951 2.5 Screw

Instrument Set: 15018-199 Ulna & Radius Locking Plate Instrument Set

+ 15063-999 Distal Radius Volar Locking Plate Instrument Set

Product No.	Holes	Length(mm)
10907-008	8	100
10907-010	10	120
10907-012	12	140

### 30713

Proximal Radius Locking Plate



Used for proximal radius fracture.

Screw: 30765 2.4 Locking Screw

30552 2.4 Cortical Screw

Instrument Set: 15063-888 Distal Radius Volar Locking Plate Instrument Set

Product No.		Holes	Length(mm)
30713-003	L	3	47.5
30713-103	R		
30713-004	L	4	57
30713-104	R		
30713-005	L	5	66.5
30713-105	R		
30713-006	L	6	76
30713-106	R		

### 30731

Distal Radius Volar Locking Plate (VA)

(5 holes Head, W=25mm)



Used for distal radius fracture.

Screw: 30765 2.4 Locking Screw

30552 2.4 Cortical Screw

Instrument Set: 15063-888 Distal Radius Volar Locking Plate Instrument Set

Product No.		Holes	Length(mm)
30731-002	L	2	49
30731-102	R		
30731-003	L	3	57.2
30731-103	R		
30731-004	L	4	68.2
30731-104	R		
30731-005	L	5	76.4
30731-105	R		
30731-006	L	6	84.6
30731-106	R		
30731-007	L	7	92.8
30731-107	R		
30731-008	L	8	101
30731-108	R		

### 30731

Distal Radius Volar Locking Plate (VA)  
(4 holes Head, W=19.5mm)



(4 holes Head, W=22mm)



Used for proximal radius fracture of acromion.  
Screw: 30765 2.4 Locking Screw  
30552 2.4 Cortical Screw  
Instrument Set: 15063-888 Distal Radius Volar  
Locking Plate Instrument Set

Product No.		Holes	Length(mm)
30731-402	L	2	44.4
30731-502	R		
30731-403	L	3	52.6
30731-503	R		
30731-404	L	4	63.6
30731-504	R		
30731-405	L	5	71.8
30731-505	R		
30731-406	L	6	80
30731-506	R		
30731-407	L	7	88.2
30731-507	R		
30731-408	L	8	96.4
30731-508	R		

Product No.		Holes	Length(mm)
30731-202	L	2	47
30731-302	R		
30731-203	L	3	55.2
30731-303	R		
30731-204	L	4	66.2
30731-304	R		
30731-205	L	5	74.4
30731-305	R		
30731-206	L	6	82.6
30731-306	R		
30731-207	L	7	90.8
30731-307	R		
30731-208	L	8	99
30731-308	R		

### 30721

Proximal Lateral Femoral Locking Plate I



Used for proximal femoral fracture.

Screw: 10755,10757 5.0 Locking Screw /  
10508 4.5 Cortical Screw

Instrument Set: 15003-888 Large Bone Fragment  
Instrument Set

Product No.		Holes	Length(mm)
30721-005	L	5	136
30721-105	R		
30721-007	L	7	172
30721-107	R		
30721-009	L	9	208
30721-109	R		
30721-011	L	11	244
30721-111	R		
30721-013	L	13	280
30721-113	R		

### 30716

Proximal Lateral Femoral (Condylar) Locking Plate II



Used for proximal lateral (condylar) femoral fracture.

Screw: Head Part 10756 6.5 Cannulated Locking Screw  
Shaft Part 10755,10757 5.0 Locking Screw  
10756 6.5 Cannulated Locking Screw

Instrument Set: 15003-888 Large Bone Fragment Instrument Set  
+ 15015-999 HB6.5 Cannulated Locking Screw Instrument Set

Product No.		Holes	Length(mm)
30716-005	L	5	136
30716-105	R		
30716-007	L	7	172
30716-107	R		
30716-009	L	9	208
30716-109	R		
30716-011	L	11	244
30716-111	R		
30716-013	L	13	280
30716-113	R		

## 30715

### Proximal Lateral Femoral (Condylar) Locking Plate III



Used for proximal femoral (condylar) fracture.

Screw: Head Part 10756 6.5 Cannulated Locking Screw

Shaft Part 10755 5.0 Locking Screw

10508 4.5 Cortical Screws

Instrument Set: 15003-888 Large Bone Fragment Instrument Set

+ 15015-999 HB6.5 Cannulated Locking Screw Instrument Set

Product No.		Holes	Length(mm)
30722-005	L	5	161
30722-105	R		
30722-007	L	7	201
30722-107	R		
30722-009	L	9	241
30722-109	R		
30722-011	L	11	281
30722-111	R		
30722-013	L	13	321
30722-113	R		

## 30722

### Distal Lateral Femoral (Condylar) Locking Plate



Used for distal femoral (condylar) fracture.

Screw: 10755, 10757 5.0 Locking Screw / 10508 4.5 Cortical Screw

Instrument Set: 15003-888 Large Bone Fragment Instrument Set

Product No.		Holes	Length(mm)
30722-005	L	5	161
30722-105	R		
30722-007	L	7	201
30722-107	R		
30722-009	L	9	241
30722-109	R		
30722-011	L	11	281
30722-111	R		
30722-013	L	13	321
30722-113	R		

30722

Distal Lateral Femoral LOC Plate (LISS)



Used for distal lateral femoral (condylar) fracture.  
 Screw: 10755,10757 5.0 Locking Screw / 10508 4.5 Cortical Screw  
 Instrument Set: 15035-999 Femoral LISS Instrument Set

Product No.		Holes	Length(mm)
30722-405	L	5	156
30722-505	R		
30722-407	L	7	196
30722-507	R		
30722-409	L	9	236
30722-509	R		
30722-411	L	11	276
30722-511	R		
30722-413	L	13	316
30722-513	R		

10741

Femoral Trochanter Locking Plate



Used for femoral trochanter fracture.  
 Screw: Head Part 10756 6.5 Cannulated Locking Screw  
                   10760 6.5 Locking Screw (Half-threaded)  
           Shaft Part 10755, 10757 5.0 Locking Screw  
 Instrument Set: 15003-888 Full Set for Large Bone LOC System  
                   + 15015-999 HB6.5 Cannulated Locking Screw Instrument Set

Product No.		Holes
10741-005	L	5
10741-105	R	



## 10742

### Femoral Neck Locking Plate



Product No.		Holes
10742-005	L	5
10742-105	R	

Used for femoral neck fracture.

Screw: Head Part 10756 6.5 Cannulated Locking Screw  
10760 6.5 Locking Screw (Half-threaded)

Shaft Part 10755,10757 5.0 Locking Screw

Instrument Set: 15003-888 Full Set for Large Bone LOC System  
+ 15015-999 HB6.5 Cannulated Locking Screw Instrument Set

## 10747

### Dynamic Hip Screw Locking Plate (DHS)



Product No.	Angle	Holes	Length(mm)
10747-003	135°	3	65
10747-004		4	83
10747-005		5	101
10747-006		6	119
10747-008		8	155
10747-010		10	191
10747-012		12	227

Used for femoral trochanter fracture.

Screw: Head Part 10403 Lag Screw

Shaft Part 10755,10757 5.0 Locking Screw

Instrument Set: 15003-888 Full Set for Large Bone LOC System  
+ 15006-999 DHS / DCS Plate Instrument Set

10748

Dynamic Condylar Screw Locking Plate (DCS)



Product No.	Angle	Holes	L length(mm)
10748-006	95°	6	143
10748-008		8	175
10748-010		10	207
10748-012		12	239

Used for femoral condylar fracture.

Screw: Head Part 10403 Lag Screw

Shaft Part 10755,10757 5.0 Locking Screw

Instrument Set: 15003-888 Full Set for Large Bone LOC System

+ 15006-999 DHS / DCS Plate Instrument Set

30723

5.0mm Proximal Lateral Tibial Golf Locking Plate



Product No.		Holes	Length(mm)
30723-003	L	3	105
30723-103	R		
30723-005	L	5	145
30723-105	R		
30723-007	L	7	185
30723-107	R		
30723-009	L	9	225
30723-109	R		
30723-011	L	11	265
30723-111	R		
30723-013	L	13	305
30723-113	R		

Used for tibial plateau fracture.

Screw: 10755,10757 5.0 Locking Screw

10508 4.5 Cortical Screw

Instrument Set: 15003-888 Full Set for Large Bone LOC System

## 30723

### Proximal Lateral Tibial Locking Plate (LISS)



Used for proximal tibial fracture.

Screw: 10755,10757 5.0 Locking Screw / 10508 4.5 Cortical Screw

Instrument Set: 15036-999 Tibial LISS Instrument Set

Product No.		Holes	Length(mm)
30723-405	L	5	140
30723-505	R		
30723-407	L	7	180
30723-507	R		
30723-409	L	9	220
30723-509	R		
30723-411	L	11	260
30723-511	R		
30723-413	L	13	300
30723-513	R		

## 10739

### 3.5mm Proximal Lateral Tibial Locking Plate III



Used for proximal tibial fracture.

Screw: Head Part 10751 3.5 Locking Screw  
10524,10526,10528 6.5 Cancellous Screw

Shaft Part 10755,10757 5.0 Locking Screw  
10508 4.5 Cortical Screw

Instrument Set: 15003-888 Full Set for Large Bone LOC System  
+ 15001-888 Full Set for Small Bone LOC System

Product No.		Holes	Length(mm)
10739-204	L	4	109
10739-304	R		
10739-206	L	6	141
10739-306	R		
10739-208	L	8	173
10739-308	R		
10739-210	L	10	205
10739-310	R		
10739-212	L	12	237
10739-312	R		

30726

3.5mm T-shaped Locking Plate III



Used for tibial plateau medial fracture.

Screw: Head Part 10751 3.5 Locking Screw

Shaft Part 10751 3.5 Locking Screw

10503 3.5 Cortical Screw

Instrument Set: 15001-888 Full Set Small Bone LOC System

Product No.		Holes	Length(mm)
30726-204	L	4	97.5
30726-304	R		
30726-205	L	5	110.5
30726-305	R		
30726-206	L	6	123.5
30726-306	R		
30726-208	L	8	149.5
30726-308	R		
30726-210	L	10	175.5
30726-310	R		
30726-212	L	12	201.5
30726-312	R		

30726

5mm T-shaped Locking Plate IV



Used for tibial plateau medial fracture.

Screw: Head Part 10755,10757 5.0 Locking Screw

Shaft Part 10755,10757 5.0 Locking Screw

10508 4.5 Cortical Screw

Instrument Set: 15003-888 Full Set for Large Bone LOC System

Product No.		Holes	Length(mm)
30726-404	L	4	105
30726-504	R		
30726-405	L	5	123
30726-505	R		
30726-406	L	6	141
30726-506	R		
30726-408	L	8	177
30726-508	R		
30726-410	L	10	213
30726-510	R		
30726-412	L	12	249
30726-512	R		

### 30727

#### 3.5mm L-buttress Locking Plate III



Used for tibial plateau lateral fracture.

Screw: Head Part 10751 3.5 Locking Screw  
 Shaft Part 10751 3.5 Locking Screw /  
 10503 3.5 Cortical Screw

Instrument Set: 15001-888 Full Set for Small Bone LOC System

Product No.		Holes	Length(mm)
30727-404	L	4	81.5
30727-504	R		
30727-405	L	5	94.5
30727-505	R		
30727-406	L	6	107.5
30727-506	R		
30727-408	L	8	133.5
30727-508	R		
30727-410	L	10	159.5
30727-510	R		
30727-412	L	12	185.5
30727-512	R		

### 30727

#### 5mm L-buttress Locking Plate IV



Used for tibial plateau lateral fracture.

Screw: Head Part 10755,10757 5.0 Locking Screw  
 Two Holes Under Head 10508 4.5 Cortical Screw  
 10524,10526,10528 6.5 Cancellous Screw  
 Shaft Part 10755,10757 5.0 Locking Screw /  
 10508 4.5 Cortical Screw

Instrument Set: 15058-666 Large Bone Fragment Instrument Set  
 + 15003-888 Full Set for Large Bone LOC System

Product No.		Holes	Length(mm)
30727-604	L	4	82.5
30727-704	R		
30727-605	L	5	100.5
30727-705	R		
30727-606	L	6	118.5
30727-706	R		
30727-608	L	8	154.5
30727-708	R		
30727-610	L	10	190.5
30727-710	R		
30727-612	L	12	226.5
30727-712	R		

30749

Proximal Posterior Medial Tibial Locking Plate



Used for tibial plateall fracture.

Screw: 10751 3.5 Locking Screw / 10520,10521 4.0 Cancellous Screw

Instrument Set: 15057-666 Small Bone Fragment Instrument Set

Or 15001-888 Full Set for Small Bone LOC System

Product No.	Holes	Length(mm)
30749-005	5	68
30749-006	6	80
30749-008	8	104
30749-010	10	128
30749-012	12	152
30749-014	14	176

30724

Distal Medial Tibial Locking Plate II



Used for distal tibial fracture.

Screw: 10751 3.5 Locking Screw / 10520,10521 4.0 Cancellous Screw

Instrument Set: 15001-888 Full Set for Small Bone LOC System

Product No.		Holes	Length(mm)
30724-006	L	6	142
30724-106	R		
30724-008	L	8	168
30724-108	R		
30724-010	L	10	194
30724-110	R		

10725

5.0mm Distal Lateral Tibial Locking Plate



Used for distal tibial fracture.

Screw: 10755,10757 5.0 Locking Screw

Instrument Set: 15003-888 Full Set for Large Bone LOC System

Product No.		Holes	Length(mm)
10725-005	L	5	122
10725-105	R		
10725-007	L	7	158
10725-107	R		
10725-009	L	9	194
10725-109	R		
10725-011	L	11	230
10725-111	R		

## 10737

### 3.5mm Distal Lateral Tibial Locking Plate



Used for distal lateral tibial fracture.

Screw: 10751 3.5 Locking Screw

10503 3.5 Cortical Screw

10520,10521 4.0 Cancellous Screw

Instrument Set: 15057-666 Small Bone Fragment Instrument Set

Product No.		Holes	Length(mm)
10737-005	L	5	81
10737-105	R		
10737-007	L	7	107
10737-107	R		
10737-009	L	9	133
10737-109	R		
10737-011	L	11	159
10737-111	R		
10737-013	L	13	185
10737-113	R		

## 10725

### TS Distal Posterior Tibial Locking Plate (YAP)



Used for distal posterior column fractures of tibia.

Screw: Head Part 10751 3.5 Locking Screw

Shaft Part 10751 3.5 Locking Screw

10503 3.5 Cortical Screw

Instrument Set: 15001-888 Full Set for Small Bone LOC System

Product No.		Holes	Length(mm)
10725-405	L	5	62.2
10725-505	R		
10725-407	L	7	90.2
10725-507	R		

### 10725

TS Distal Anterior Tibial Locking Plate (YAP)



Used for distal anterior column fractures of tibia.

Screw: Head part 10751 3.5 Locking Screw

Shaft part 10751 3.5 Locking Screw

10503 3.5 Cortical Screw

Instrument Set: 15001-888 Full Set for Small Bone LOC System

Product No.		Holes	Length(mm)
10725-605	L	5	78
10725-705	R		
10725-607	L	7	106
10725-707	R		

### 30748

Distal Medial Tibial Locking Plate I



Used for distal tibial fracture.

Screw: 10751 3.5 Locking Screw

10503 3.5 Cortical Screw

10520,10521 4.0 Cancellous Screw

Instrument Set: 15001-888 Full Set for Small Bone LOC System

Product No.		Holes	Length(mm)
30748-004	L	4	109
30748-104	R		
30748-006	L	6	135
30748-106	R		
30748-008	L	8	161
30748-108	R		
30748-010	L	10	187
30748-110	R		
30748-012	L	12	213
30748-112	R		
30748-014	L	14	239
30748-114	R		



## 30714

### Distal Lateral Fibular Locking Compression Plate



Used for proximal lateral fibular fracture.

Screw: Head Part 10960 2.7 Locking Screw (20° )  
10951 2.5 Self-tap-ping Screw

Shaft Part 10751 3.5 Locking Screw  
10503 3.5 Cortical Screw

Instrument Set: 15001-888 Full Set for Small Bone LOC System

Product No.		Holes	Length(mm)
30714-003	L	3	73
30714-103	R		
30714-004	L	4	86
30714-104	R		
30714-005	L	5	99
30714-105	R		
30714-006	L	6	112
30714-106	R		
30714-007	L	7	125
30714-107	R		
30714-009	L	9	151
30714-109	R		
30714-011	L	11	177
30714-111	R		
30714-013	L	13	203
30714-113	R		

### 10715

Distal Lateral Fibular Locking Plate



Used for proxiaml lateral fibular fracture.

Screw: Head Part 10960 2.7 Locking Screw (20°)

Shaft Part 10751 3.5 Locking Screw

Instrument Set: 15001-888 Full Set for Small Bone LOC System

Product No.		Holes	Length(mm)
10715-004	L	4	91
10715-104	R		
10715-006	L	6	115
10715-106	R		
10715-008	L	8	139
10715-108	R		
10715-010	L	10	163
10715-110	R		
10715-012	L	12	187
10715-112	R		

### 30740

Distal Posterior Lateral Fibular Locking Plate



Used for distal fibular fracture.

Screw: 10751 3.5 Locking Screw / 10503 3.5 Cortical Screw

Instrument Set: 15001-888 Full Set for Small Bone LOC System

Product No.	Holes	Length(mm)
30740-003	3	84
30740-005	5	110
30740-007	7	136
30740-009	9	162
30740-011	11	188
30740-013	13	214

## 19906

### Distal Lateral Fibular Locking Plate II



Note: Used for distal lateral fibular fracture.

Screw: 10960 HA2.7 Locking Screw

10751 HA3.5 Locking Screw

Instrument Set: 15001-888 Full Set for Small Bone LOC System

Product No.		Holes	Length(mm)
19906-102	L	2	63.5
19906-202	R		
19906-104	L	4	88.5
19906-204	R		
19906-106	L	6	113.5
19906-206	R		
19906-108	L	8	138.5
19906-208	R		

## 10746

### DS Butterfly-shaped Sacro-iliac Locking Plate



Used for treatment and immobilization of sacroiliac joint damage.

Screw: 10751 3.5 Locking Screw

Instrument Set: 15001-888 Full Set for Small Bone LOC System

Product No.	Holes
10746-006	6

10730

Calcaneal Locking Plate



Product No.		Holes	Length(mm)
10730-057	L	15	57
10730-157	R		
10730-067	L	15	67
10730-167	R		

10730

Calcaneal Locking Plate III



Product No.		Type	Length(mm)
10730-259	R	S	59
10730-359	L		
10730-267	R	M	66.5
10730-367	L		
10730-273	R	L	72.5
10730-373	L		

Used for calcaneal fracture.

Screw: 10751 3.5 Locking Screw

Instrument Set: 15001-888 Full Set for Small Bone LOC System

## Pediatric Hip Locking Plate



Note: The Pediatric Hip Plates 3.5 and 5.0 are intended for use in pediatrics (children from 2 to 16 years) and for small-stature adult patients. Specific indications include:

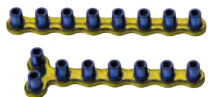
- Coxa varus
  - Coxa valgus
  - Developmental Dysplasia of the Hip (DDH)
  - Fractures of the proximal femur
- Instruments set: 15054-999 Pediatric Hip Locking Plate Instrument Set

Product Name	Product No.	Holes	Length(mm)
Pediatric Hip Locking Plate 3.5 (100°)	19904-003	3	76.5
Pediatric Hip Locking Plate 3.5 (110°)	19904-103	3	76.5
Pediatric Hip Locking Plate 3.5 (120°)	19904-204	4	85.7
Pediatric Hip Locking Plate 3.5 (120°)	19904-206	6	101.7
Pediatric Hip Locking Plate 3.5 (150°)	19904-303	3	67
Pediatric Hip Locking Plate 5.0 (100°)	19904-403	3	91.5
Pediatric Hip Locking Plate 5.0 (110°)	19904-503	3	91.5
Pediatric Hip Locking Plate 5.0 (120°)	19904-604	4	95.4
Pediatric Hip Locking Plate 5.0 (120°)	19904-606	6	127.4
Pediatric Hip Locking Plate 5.0 (150°)	19904-703	3	81
Pediatric Hip Locking Plate 3.5 (90°)	49907-000	3	76.5
Pediatric Hip Locking Plate 5.0 (90°)	49907-011	3	76.5

Screw	Product No.	Length	Increments
3.5mm Locking Screw	10751-(112~132)	12-32	2
3.5mm Locking Screw	10751-(135~160)	35-60	5
3.5mm Cortical Screw	10503-(010~050)	10-50	2
5.0mm Locking Screw	10755-(114~150)	14-50	2
5.0mm Locking Screw	10757-(055~110)	55-110	5
4.5mm Cortical Screw	10508-(020~060)	20-60	2

10731

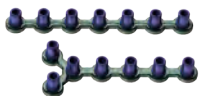
FAST Mini Locking Plate (High-strength)



Product No.	Holes	Type
10731-008	8	Straight plate
10731-108	8	Y-Plate
10731-208	8	L-Plate oblique (Left)
10731-308	8	L-Plate oblique (Right)

10731

FAST Mini Locking Plate (High-flexibility)



Product No.	Holes	Type
10731-007	7	Straight plate
10731-107	7	Y-Plate
10731-207	7	L-Plate (Left)
10731-307	7	L-Plate (Right)

Miniature locking plate system is dedicated to the fresh fracture of the non-weight-bearing bone, revision surgery, joint fusion and the skeletal reconstruction of hand, foot, wrist, ankle, humerus, scapula, fingers, toes, pelvis, and craniofacial.

Screw: 10753-(310~330) 2.5 Self-tapping Locking Screw (Full-threaded)

Instrument Set: 15069-999 Fast Mini Locking Plate Instrument Set

HA2.4 Locking Screw (Self-tapping, Torx)



Product No.	Dia	Length(mm)
30765-(012-040)	2.4	12-40(In 2mm increments)

HA2.4 Cortical Screw (Self-tapping, Torx)



Product No.	Dia	Length(mm)
30552-(012-040)	2.4	12-40(In 2mm increments)

HA1.5 Screw (Self-tapping, Cross)



Product No.	Dia	Length(mm)
11081-(004~016)	1.5	4-16(In 1mm increments)
11081-(018~024)	1.5	18-24(In 2mm increments)

HA2.0 Screw (Self-tapping, Torx)



Product No.	Dia	Length(mm)
11082-(004~016)	2.0	4-16(In 1mm increments)
11082-(015~024)	2.0	15-24(In 2mm increments)

HA2.5 Screw (Self-tapping, Torx)



Product No.	Dia	Length(mm)
10951-(004~016)	2.5	4-16(In 1mm increments)
10951-(016~030)	2.5	16-30(In 2mm increments)

HA2.7 Screw (Self-tapping, Torx)



Product No.	Dia	Length(mm)
10950-(004~016)	2.7	4-16(In 1mm increments)
10950-(018~048)	2.7	18-48(In 2mm increments)
10950-(050~060)	2.7	50-60(In 5mm increments)

HA1.5 Locking Screw (20°, Self-tapping, Torx)



HA2.0 Locking Screw (20°, Self-tapping, Torx)



HA2.5 Locking Screw (20°, Self-tapping, Torx)



HA2.7 Locking Screw (20°, Self-tapping, Torx)



HA2.5 Self-tapping Locking Screw (Half-threaded, Torx)



HA2.5 Self-tapping Screw (Fully-threaded, Torx)



HA2.5 Self-tapping Locking Screw (Fully-threaded, Torx)



Product No.	Dia	Length(mm)
11091-(004~016)	1.5	4-16(In 1mm increments)
11091-(018~024)	1.5	18-24(In 2mm increments)

Product No.	Dia	Length(mm)
11092-(006~014)	2.0	6-14(In 1mm increments)
11092-(016~030)	2.0	16-30(In 2mm increments)

Product No.	Dia	Length(mm)
10961-(006~014)	2.5	6-14(In 1mm increments)
10961-(016~030)	2.5	16-30(In 2mm increments)

Product No.	Dia	Length(mm)
10960-(010~048)	2.7	10-48(In 2mm increments)
10960-(050~060)	2.7	50-60(In 5mm increments)

Product No.	Dia	Length(mm)
10753-(110~130)	2.5	10-30(In 2mm increments)

Product No.	Dia	Length(mm)
10753-(210~230)	2.5	10-30(In 2mm increments)

Product No.	Dia	Length(mm)
10753-(310~330)	2.5	10-30(In 2mm increments)



HA3.5 / HA5.0 Locking Screw (Self-tapping,Torx)



Product No.	Dia	Length(mm)
10751-(112-160)	HA3.5	12-42(2mm increments)
		45-60(5mm increments)
10755-(114-150)	HA5.0	14-50(2mm increments)
10755-(155-170)		55-70(5mm increments)
10757-(075-110)		75-110(5mm increments)

HB6.5 Locking Screw (Hexagonal / Half-threaded)



Product No.	Dia	Length(mm)
10760-(060~120)	6.5	60-120

Note:Used for proximal lateral femoral plate II, In 5mm increments.

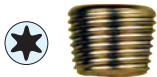
HB6.5 Cannulated Locking Screw



Product No.	Dia	Length(mm)
10756-(060~120)	6.5	60-120

Note:Used for proximal lateral femoral plate II, In 5mm increments.

Locking Spacer



Product No.	Length(mm)
10751-210	4
10755-215	5

Note:Used for Loc plates of upper and lower limbs fracture.

Headless Cannulated Compression Screw



Product No.	Dia	Length(mm)
10538-(008-030)	2.5	8/9/10/11/12/13/14/16/18/ 20/22/24/26/28/30
10539-(016-040)	3.5	16/18-38/40
10540-(016-050)	4.0	16-50
10541-(020-080)	5.0	20/25-78/80
10546-(030-100)	6.5	30-100

Note: HB2.5 In 1mm increments for 8-13, In 2mm increments for 14-18, HB3.5 In 2mm increments, HB4.0 In 2mm increments, HB5.0, HB5.5, HB6.5 In 5mm increments.

Instrument Set: 15064-999 Headless Cannulated Compression Screws Instrument Set.

Cannulated Compression Screw



HB3.5	L1	10	12	14	16	18	20	22	24	26	28	32	36	40	45	50
	L2	5	6	6	8	8	8	10	10	12	14	14	14	14	14	16

HB4.5	L1	20	22	24	26	28	30	32	34	36	38	40	42	44	46	48	50	52	54	56	60	64	68	72
	L2	6	8	8	8	8	10	10	10	12	12	12	14	14	14	16	16	16	18	18	20	20	22	24

Note: HB3.5, HB4.5 In 2mm increments

L1=total screw length, L2=threaded part length

Cannulated Compression Screw



Ti Product No.	SS Product No.	Dia	Length(mm)
10533-(060-110)	20533-(060 ~ 110)	7.3 L2=32mm	60-110
10534-(060-110)	20534-(060 ~ 110)	7.3 L2=18mm	60-110

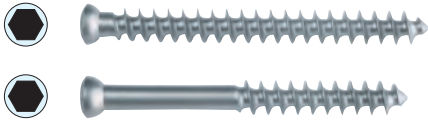
Note: HB7.3 In 5mm increments, L2=threaded part length

### Cortical Screw



Ti Product No.	SS Product No.	Dia	Length(mm)
10503-(010~050)	20503-(010~050)	3.5	10-50(In 2mm increments)
10508-(020~060)	20508-(020~060)	4.5	20-60(In 2mm increments)

### Cancellous Screw (Fully threaded / Half-threaded)



Ti Product No.	SS Product No.	Dia	Length(mm)
10520-(014~060)	20520-(014~060)	4.0 (Fully-Threaded)	14-60(In 2mm increments)
10521-(014~060)	20521-(014~060)	4.0 (Half-Threaded)	14-60(In 2mm increments)
10524-(030~100)	20524-(030~100)	6.5 (Fully-Threaded)	30-100(In 5mm increments)
10526-(030~095)	20526-(030~095)	6.5 (Half-Threaded L2=16mm)	30-95(In 5mm increments)
10528-(045~095)	20528-(045~095)	6.5 (Half-Threaded L2=32mm)	45-95(In 5mm increments)

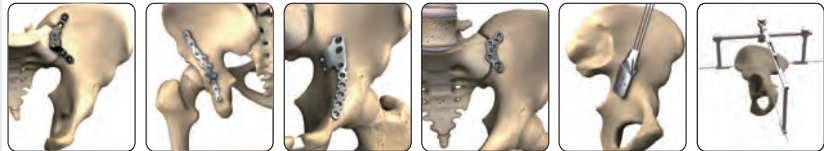
Note: L2=threaded part length

### 10403/20403 Lag Screw



Ti Product No.	SS Product No.	Length(mm)
10403-(050 ~ 110)	20403-(050 ~ 110)	50 ~ 110(In 5mm increments)

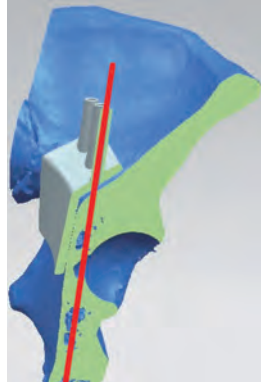
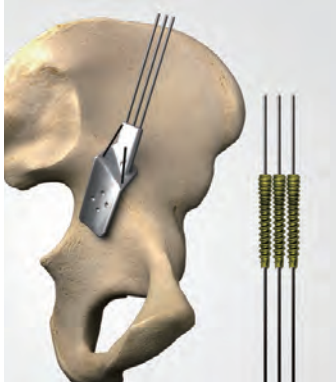
# Pelvic Master Series



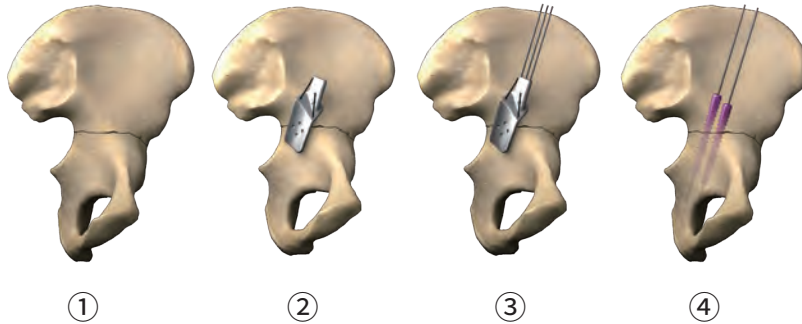
# YAP-Master guidance system for posterior column of acetabulum

## Indications:

1. Posterior column acetabular fractures without obvious displacement: Use an anterior approach, providing access to the iliac fossa. After the exposure of quadrilateral surface, YAP Guidance System for Posterior Column of Acetabulum can be used to implant lag screws. For transverse acetabular fracture, use an anterior approach and confirm anatomical reduction, then anterior plate and lag screws can be used to fix the posterior column acetabular fracture.
2. All complex acetabular fractures with posterior column involved, for example acetabulum two column fractures, T shape fractures and anterior column + posterior hemi transverse fractures. We suggest use a single anterior approach, reduce the fractures of anterior and posterior column, use plate to fix the anterior column fracture, while for posterior column fracture, YAP Guidance System for Posterior Column of Acetabulum can be used to implant lag screws.



## Indication for use:



1. Use an anterior approach, reduce the posterior column acetabular fracture fragments.
2. Position the guide template and fix it with K-wire.
3. Insert guide wires into the hole of the guide template.
4. Selecting 2 of the guide wires with good position with X-rays, then implant specific  $\Phi 5.5$  Cannulated Screws.

## Clinical characteristics

1. The Guidance System is easy to use, with precise position and orientation, which can shorten the procedure time to implant the posterior column screws. The Guidance System is applicable for primary hospitals.
2. Two surfaces of the guide template shall separately attach closely to the pelvic brim and quadrilateral surface, the posterior end of the guide template shall attach closely to the sacroiliac joint.
3. Reduce anatomically the posterior column in all efforts, as the clinical effects would be affected directly if the reduction were not achieved well.
4. Guidance template technically improved is more stable in positioning, with additional function in reduction of the posterior column, which leads to easier reduction.

# YAP-Master retrograde guidance system for posterior column of acetabulum

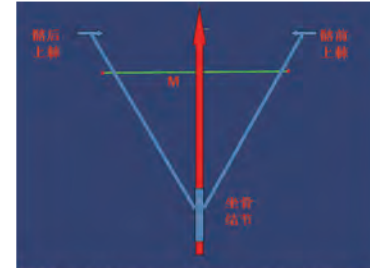
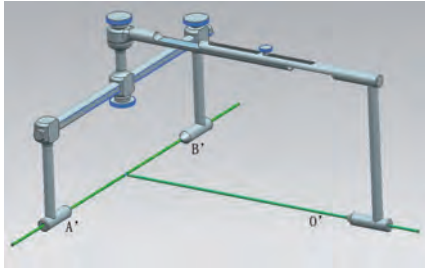
## Indications:

low profile fractures of posterior column with slight displacement. (Precautions: Not recommended for over-weighted patients).



## Inspiration:

anterior superior iliac spine, posterior superior iliac spine and ischial tuberosity bony protrusion form an isosceles triangle, in which the bony protrusions of anterior superior iliac spine and posterior superior iliac spine forms the base. Implant a  $\Phi 5.5$  Cannulated Screw via the vertical plane of the triangle aforementioned, 87.9% of the hemipelvis can be covered by the guidance system.

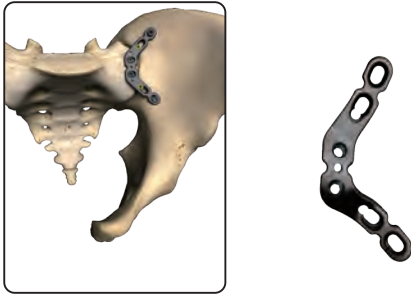


## Clinical characteristics

1. Easy to use, with precise position and orientation.
2. Shorter procedure time to implant the posterior column screws.
3. High rate of successful screw implantation with the Guidance System.
4. Higher efficiency with precise insertion in one time.
5. Advantages in rigid fixation, longer screws can be implanted with safety guaranteed.
6. Simple structure and small size to be applied, easy to be assembled, transported and sterilized.



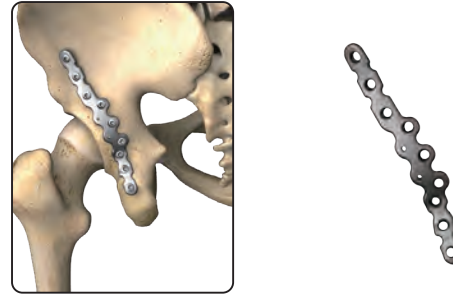
## YAP-Master sacro-iliac plate system



### Clinical characteristics

1. Shape of butterfly, reliable in fixation, with large surface to be covered.
2. Slight bending and shaping are allowed.
3. Easy to use, with function of reduction.

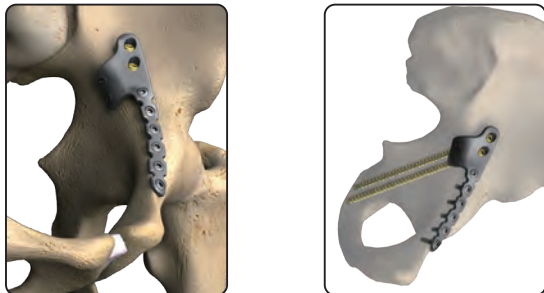
## YAP-Master posterior acetabular wall plate



### Clinical characteristics

1. Anatomical design.
2. Holes for locking screws in posterior wall of acetabulum, safe and reliable to access along the holes.
3. No need of bending, maintained reduction fixation.

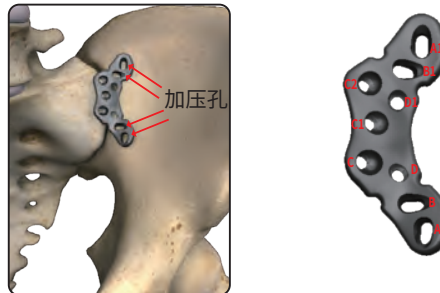
## YAP-Master anterior and posterior locking plate system



### Clinical characteristics

1. Anatomical design for anterior column locking plate, reconstruction design for the end of the locking plate.
2. Fixation solution for both anterior and posterior column with one locking plate.
3. Extra-long cannulated locking screw for fixation of posterior column, precise insertion permitted for plate with holes of locking screws, safe and reliable

## YAP-Master sacroiliac joint plate



### Clinical application

1. Fix locking screw holes of sacrum C+C1 or C+C1+C2
2. Implantation of screw through eccentric hole of hole A can reduce the ilium for a displacement downward of 2-3mm. If the reduction is not enough, another screw can be implanted through compression hole of hole A for additional displacement downward of 2-3mm. If compression should be applied to screw in hole A1, screws in hole A shall be released.
3. Screws for holes B and B1 should be twisted into the holes at the same time, which will lead to the medial displacement of 2-3mm for the reduction ilium (shorten the distance of sacroiliac joint).
4. Implant locking screws through locking holes of ilium D and D1, fished the final fixation.

# Pelvic Classic Series



## 11801

3.5 Reconstruction Plate(Low Profile, Straight)



Product No.	Holes	Length(mm)
11801005	5	65
11801006	6	78
11801007	7	91
11801008	8	104
11801009	9	117
11801010	10	130
11801012	12	156
11801014	14	182
11801016	16	208
11801018	18	234
11801020	20	260

## 11802

3.5 Reconstruction Plate(Wide Angle, Straight)



Product No.	Holes	Length(mm)
11802005	5	65
11802006	6	78
11802007	7	91
11802008	8	104
11802009	9	117
11802010	10	130
11802012	12	156
11802014	14	182
11802016	16	208
11802018	18	234
11802020	20	260

## 11803

3.5 Reconstruction Plate(Wide Angle, Straight)



Product No.	Holes	Length(mm)
11803006	6	76
11803008	8	99
11803010	10	119
11803012	12	137
11803014	14	153
11803016	16	165

## 11804

3.5 Curved Reconstruction Plate(Low profile, radius 105 mm)



Product No.	Holes	Length(mm)
11804006	6	78
11804008	8	101
11804010	10	123
11804012	12	144
11804014	14	162
11804016	16	179

11805

3.5 J-reconstruction Plate(Low profile)



Product No.	L/R	Holes	Length(mm)
11805010	L	10	112
11805012	L	12	138
11805014	L	14	164
11805016	L	16	190
11805110	R	10	112
11805112	R	12	138
11805114	R	14	164
11805116	R	16	190

11806

3.5 Reconstruction LOC Plate(Coaxial combi-holes,Straight)



Product No.	Holes	Length(mm)
11806005	5	65
11806006	6	78
11806007	7	91
11806008	8	104
11806009	9	117
11806010	10	130
11806012	12	156
11806014	14	182
11806016	16	208
11806018	18	234
11806020	20	260

11807

3.5 Symphyseal LOC Plate(Coaxial combi-holes, 2DCP)



Product No.	Holes	Length(mm)
11807004	4	58
11807006	6	81

11808

3.5 Symphyseal LOC Plate(Coaxial combi-holes)



Product No.	Holes	Length(mm)
11808004	4	58
11808006	6	81

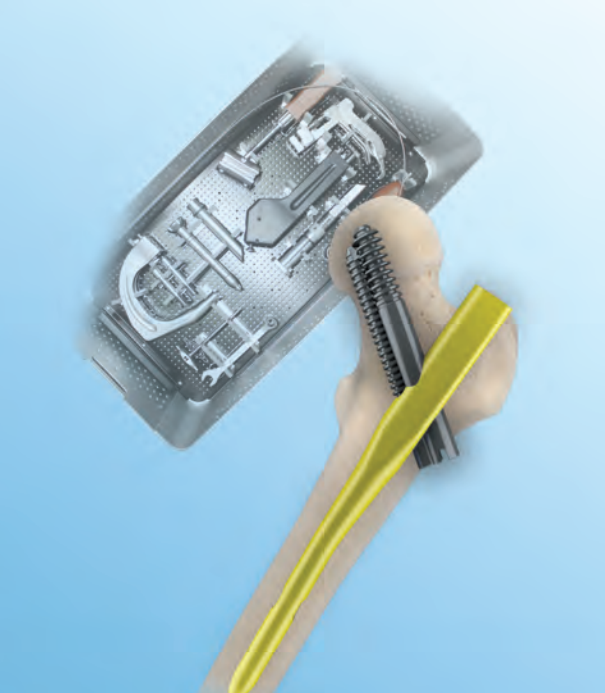
11809

3.5 J- Reconstruction LOC Plate( Coaxial combi-holes,radius 85 mm)



Product No.	L/R	Holes	Length(mm)
11809010	L	10	112
11809012	L	12	138
11809014	L	14	164
11809016	L	16	190
11809110	R	10	112
11809112	R	12	138
11809114	R	14	164
11809116	R	16	190

# Intramedullary Nail System



1. The latest anatomical type bending makes the nails much easier to insert
2. The distal tilted locking can help avoid the soft tissue irritation while enhancing the stability of the distal fracture site
3. Made of the titanium alloy, this product comes with both excellent mechanical and anti-fatigue performances



GAMMA Intramedullary Nail II



Product No.	Dia	Length(mm)
10607-117/120	9.2	170/200
10607-217/220	10	
10607-317/320	11	
10607-417/420	12	
10616-124	9.2	240
10616-324	10	
10616-524	11	
10616-724	12	

10615

GAMMA Intramedullary Nail II (Extra-long)



Product No.		Dia	Length(mm)
10615-(132 ~ 142)	L	9.2	320/340/360/ 380/400/420
10615-(232 ~ 242)	R		
10615-(332 ~ 342)	L	10	
10615-(432 ~ 442)	R		
10615-(532 ~ 544)	L	11	320/340/360/380 /400/420/440
10615-(632 ~ 644)	R		

\* Instrument Set:15050-999 (PFNA)GAMMA Intramedullary Nail Instrument II

10623

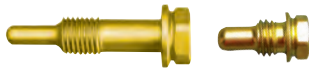
GAMMA Locking Screw II



Product No.	Dia	Length(mm)
10623-(070~120)	10	70/75/80/85/90 /95/100//120

10625

End Cap



Product No.	High(mm)
10625-(025~040)	25/40

10646

Locking Bolt



Product No.	Dia	Length(mm)
10646-(026~100)	5	26~80( In 2mm increments) 85~100( In 5mm increments)

\* Instrument Set: 15050-999 (PFNA) GAMMA Intramedullary Nail Instrument II

Femoral Intramedullary Nail (Professional X Series)

GAMMA Intramedullary Nail III (Standard)



GAMMA Intramedullary Nail III (Reconstruction)



Product No.		Dia	Length(mm)
10637-(132~142)	L	9.5	320~420
10637-(232~242)	R		
10637-(332~344)	L	10	320~440
10637-(432~444)	R		
10637-(532~544)	L	11	
10637-(632~644)	R		

Note: Standard type is used for fracture of femoral shaft, in 20mm increments. Choose 4pcs 10646 locking bolts.  
 Reconstruction type is used for subtrochanteric fracture and ipsilateral fracture of the femoral neck and shaft. Choose 2pcs 10633 GAMMA locking screws for proximal end, 2pcs 10646 locking screws for distal end.

\* Instrument Set: 15048-999 Femoral Intramedullary Nail Instrument (Professional X Series)

10633

GAMMA Locking Screw III



10646

Locking Bolt



10631

End Cap (Standard)



10632

End Cap (Extra-Long)



Product No.	Dia	Length(mm)
10633-(065~115)	6.4	65-115

In 5mm increments.

Product No.	Dia	Length(mm)
10646-(026~100)	5	26~80 ( In 2mm increments)
		85~100 ( In 5mm increments)

Product No.	Standard
10631-535	

Product No.	High
10632-(005~020)	5/10/15/20

\* Instrument Set: 15048-999 Femoral Intramedullary Nail Instrument (Professional X Series)

Tibial Intramedullary Nail (Professional X Series)



10626

Locking Screw



10627

Cancellous Locking Screw



10629

End Cap (Standard)



10628

End Cap (Extra-Long)



Product No.	Dia	Length(mm)
10617-(255~375)	8.5	255/270/285/300/315/ 330/345/360/375
10618-(255~375)	9	
10619-(255~375)	10	
10620-(255~375)	11	



Note: Used for fractures of tibial shaft, metaphysis, tibial plateau and PILON. In 15mm increments. Choose 3pcs 10627 Cancellous locking screws for proximal end, others use 10626 locking screws.

Product No.	Dia	Length(mm)
10626-(024~088)	4.5	24-88

In 2mm increments.

Product No.	Dia	Length(mm)
10627-(025~090)	4.8	25-90

In 5mm increments.

Product No.	Standard
10629-000	
10629-008	

Product No.	Length(mm)
10628-(005~015)	5/10/15

\* Instrument Set: 15049-999 Tibial Intramedullary Nail Instrument (Professional X Series)

10605

Universal Retrograde Nail (Fibular)



Product No.	Dia	Length(mm)
10605-(414~428)	4.0	140/180/220/260/280
10605-(514~528)	4.5	

Used for fibular shaft fracture with 10502 HA2.7 screw and 15046-999 Mini Intermedullary Nail Instrument Set.

10608

Universal Retrograde Nail (Ulna / Radius)



Product No.	Dia	Length(mm)
10608-(120~124)	4.0	200/220/240
10608-(220~260)	4.5	220/240/260

Used for ulna and radius shaft fracture with 10502 HA2.7 screw for proximal end and 10622 HA2.0 screw for distal end; equipped with 15046-999 Mini Intermedullary Nail Instrument Set; 1.2 square driver and 1.5 drill bit.

10622

HA2.0 Screw



Product No.	Dia	Length(mm)
10622-(714-722)	HA2.0	14~22

In 2mm increments.

10502

HA2.7 Screw



Product No.	Dia	Length(mm)
10502-(314-322)	HA2.7	14~22

In 2mm increments.

\* Instrument Set: 15046-999 Mini Intramedullary Nail Instrument

10604

Universal Flexible Retrograde Nail



Product No.	Dia	Length(mm)
10604-540	2.0	440
10604-640	2.5	
10604-740	3.0	
10604-840	3.5	
10604-940	4.0	

Used for long tubular bone fracture in children and clavicle and upper limbs fracture in adults.

10604

End Cap

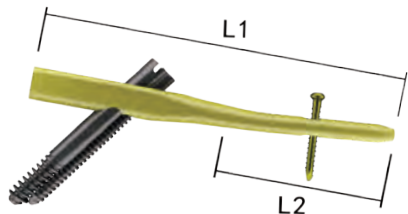


Product No.	High(mm)
10604-000	28

\* Instrument Set: 15047-999 Universal Flexible Retrograde Nail Instrument Set

### 10603

Union GAMMA Intramedullary Nail



Product No.	Dia	Length1(mm)	Length2(mm)
10603-118	9	180	72.8
10603-218	10	180	72.8
10603-318	11	180	72.8
10603-418	12	180	72.8
10603-120	9	200	92.8
10603-220	10	200	92.8
10603-320	11	200	92.8
10603-420	12	200	92.8

### 10651

Compression Screw



Product No.	Dia	Length(mm)
10651-(030/060~120)	7	30/60~120 (In 5mm increments)

### 10652

Integrated Interlocking Screws



Product No.	Dia	Length(mm)
10652-(065~120)	10	65~120(In 5mm increments)

\* Instrument Set: 15040-999 Union GAMMA Intramedullary Nail Instrument



10653

Lag Screw(Single screw)



Product No.	Dia	Length(mm)
10653-(065~120)	10	65~120(In 5mm increments)

10654

End Cap



Product No.	Length(mm)
10654-014	14

10655

Compression End Cap



Product No.	Length(mm)
10655-015	15

10646

Locking Bolt



Product No.	Dia	Length(mm)
10646-(026~100)	5	26~60(In 2mm increments) 85~100(In 5mm increments)

30647

Humeral Intramedullary Nail



Product No.	Dia	Length(mm)
30647-(116~126)	7	160~260(In 20mm increments)
30647-(216~226)	8	

Used for proximal and shaft fracture of humerus, proximal three holes used with HA5.0 locking screws, the proximal fourth holes and distal two holes used with HA3.5 locking screw.

30646 3.5

3.5 Locking screw



Product No.	Dia	Length(mm)
30646-(218~238)	3.5	18~38(In 2mm increments)
30646-(240~250)	3.5	40~50(In 5mm increments)

30646 5.0

5.0 Locking screw



Product No.	Dia	Length(mm)
30646-(120~150)	5.0	20~50(In 5mm increments)

30646

End cap



Product No.	Length(mm)
30646-300	9

# More Professional More Effective

Your Reliable Waston

WASTON 华森  
M E D I C A L

Changzhou Waston Medical Appliance Co.,Ltd  
9Xihu Road,Wujin Hi-Tech Industry Zone, Jiangsu Province,China

TEL:+86-519-89888852

Email:info@wastonmed.com

www.wastonmed.com

CE 0123