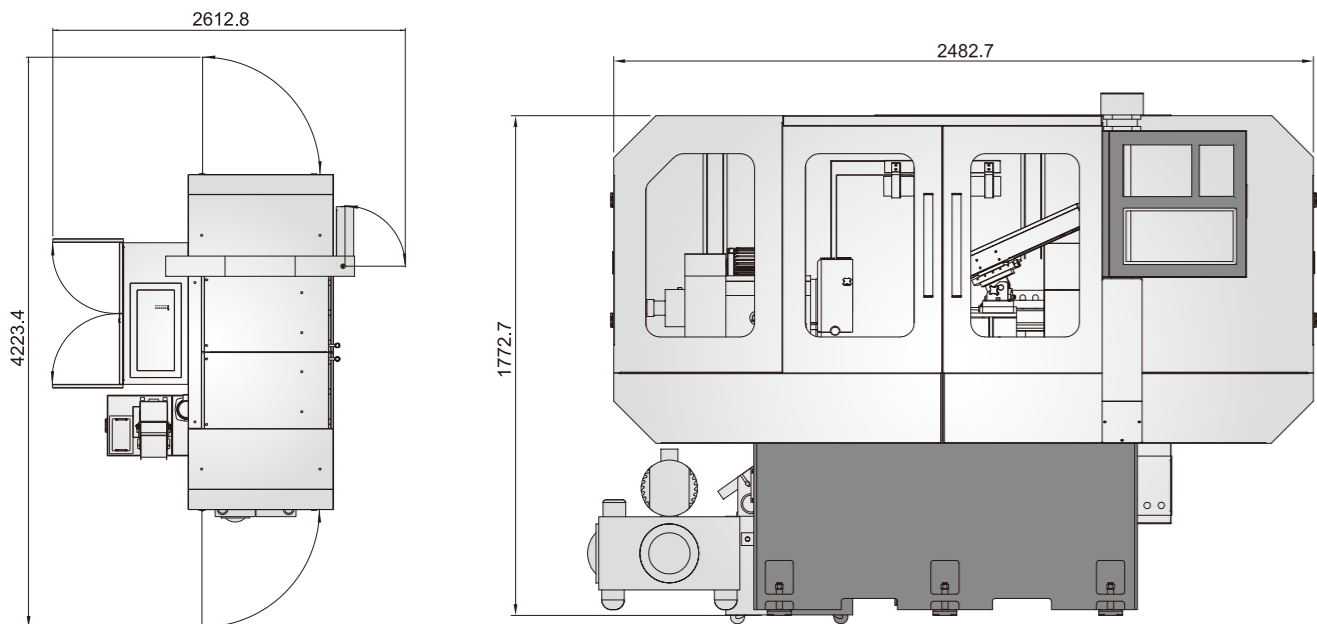


機器外觀尺寸圖  
MACHINE DIMENSIONS



選購配備  
OPTIONAL ACCESSORIES

薄膜夾具  
Fixture for Thin Parts



端面量測裝置  
End Face Touch Probe



此裝置提供快速、方便的端面基準點之量測。  
The touch probe is used for fast and convenient measurement for reference point of end face.

X軸光學尺  
X-axis Linear Scale



X, Y, Z軸可依客戶要求，加裝光學尺，提供閉迴路控制，以提升定位精度。

Upon customer's request, the X, Y, Z-axis is available to be fitted with a linear scale. It provides a close loop control for increasing positioning accuracy.

油壓夾頭含迴轉缸  
Hydraulic Chuck and Rotary Cylinder



	規格	SPECIFICATIONS	SRI-150
能力 <b>Capacity</b>	研磨內徑範圍	Inside diameter range	Ø6~Ø150mm
	最大研磨深度	Max. grinding depth	150mm
	最大夾持長度	Max. chucking length	200mm
	床面旋徑	Swing over bed	520mm
砂輪頭 <b>Wheel head</b>	防水蓋旋徑	Swing over fluid guard	320mm
	最大進給速度	Max. feed rate	8m/min
	最大行程	Max. travel	100mm
	最小設定單位	Min. setting unit	0.001mm
主軸台 <b>Work spindle head</b>	主軸轉速	Spindle speed	13-800 R.P.M
	主軸	Spindle	A2-5
	迴轉角度	Swivel angle	+3°~-7°
馬達 <b>Motor</b>	砂輪主軸馬達	Wheel spindle	2 kw
	工作主軸馬達	Workhead spindle	2HP2P + freq. inverter
	X軸伺服馬達	X-axis AC servomotor	750W AC 伺服馬達
	Y軸伺服馬達	Y-axis AC servomotor	750W AC 伺服馬達
	Z軸伺服馬達	Z-axis AC servomotor	1.5W AC 伺服馬達
	冷卻液馬達	Coolant pump	1/4HP
機器規格 <b>Machine</b>	油壓馬達	Hydraulic pump	2HP4P
	機器尺寸	Machine dimensions	2300 x1020 x 1800
	淨重	Net weight	2400 kg
	毛重	Gross weight	2600 kg

標準配備  
Standard Accessories

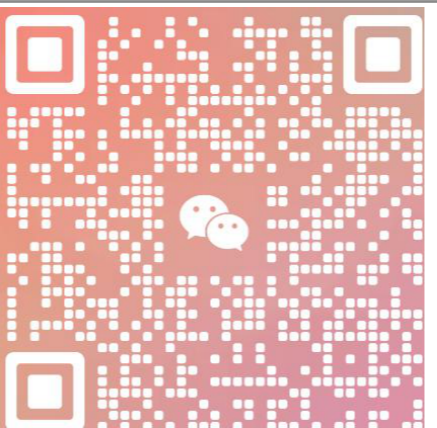
- CNC控制器
- 濾波器 80A
- 水箱 100L、1/4 泵浦
- 潤滑系統
- 日光燈 24V
- 鑽石修刀組
- 水平調整螺絲及墊塊
- 工具箱
- 砂輪主軸 (台制) (10000-50000RPM，任選一支)
- 防護系統
- 熱交換機

選購配備  
Optional Accessories

- 高速砂輪
- 高速成型砂輪
- 水冷循環機
- 電磁+紙帶過濾機
- 迴轉式修整裝置
- IMT 高速主軸
- 光學尺 (3軸)
- 備用砂輪主軸 (皮帶式)
- 砂輪軸噴霧給油裝置
- 內藏式主軸 (台制)
- 端面量測
- 電磁過濾機 40L
- 自動門
- 皮帶張力自動調整裝置
- 油壓3爪夾頭 8英寸
- 變頻器
- 空調式冷卻器 KAC-2FS



高騰達-徐国鸣/13202262841  
微信号:kennethchui888  
邮箱:everwinmold@163.com



電控系統符合歐規  
Control System Meets European Standards



電控系統完全採用高級電氣元件組成，並且符合歐洲安全特性。電控箱內部具防塵，防水特性。電氣系統具自我偵測功能，並附有警示燈指示。

The control system consists of top quality electronic components which comply with European safety requirements. The interior of the control cabinet is dust-proof and fluid-proof. The control system has a self-diagnostic function and warning light indicating machine status.

先進CNC控制器  
Advanced CNC Control



本機配備最先進的CNC控制器，附教導式畫面。易學易操控。自動以圖形對話產生加工程式。可大幅降低準備前置時間，提升加工效率。

The machine is equipped with the latest CNC control with teach-in programming function and it is easy to operate. Machining programs are automatically generated through graphic dialog. This greatly saves on preparation time while increasing efficiency.

直結傳動搭配精密鏟花滑道  
Direct Transmission System with Fine-Scrapped Slideways

X軸滑道  
X-axis Slideways



X軸滑道為鳩尾槽滑道，經精密鏟花處理。X軸採用伺服馬達驅動，配合精密滾珠螺桿傳動，定位精度。

The X-axis moves on dovetail slideways with precision scraping.

The X-axis is driven by a servo motor and transmitted through a precision ball screw for high positioning accuracy.

Y軸滑道  
Y-axis Slideways

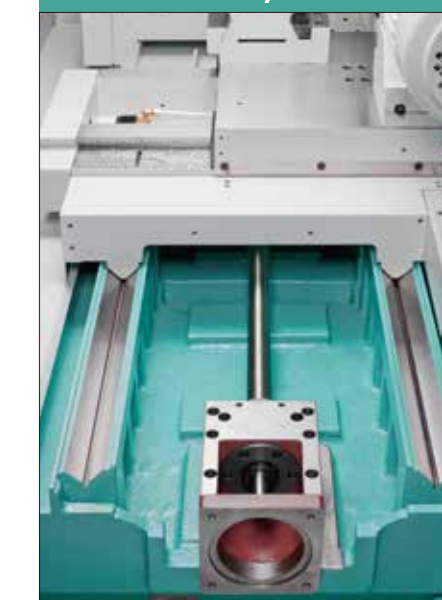


Y軸滑道為鳩尾槽滑道，經精密鏟花處理。Y軸採用伺服馬達直接驅動滾珠螺桿，動作快速順暢，定位精準。

The Y-axis moves on dovetail slideways with precision scraping.

The Y-axis employs a servo motor, which directly drives a ball screw for smooth movement and high positioning accuracy.

Z軸滑道  
Z-axis Slideways



Z軸滑道為雙“V”型滑道，配合大跨距設計，穩定性優異。Z軸採用伺服馬達直接驅動滾珠螺桿。

The Z-axis moves on double “V” slideways in combination with a large span between them, exhibiting outstanding stability.

The Z-axis employs a servo motor, which directly drives the ball screw.

# SIGMA TOP SRI-150

## 適用行業

專為精密零件內磨而打造的SRI-150，可創造出您所期望的精度與表面粗度。

- 精密機械零件
- 電子業
- 汽機車零件
- 空油壓零件
- 航太零件
- 各式軸承
- 醫療器材
- 刀具類

## Applicable Industries

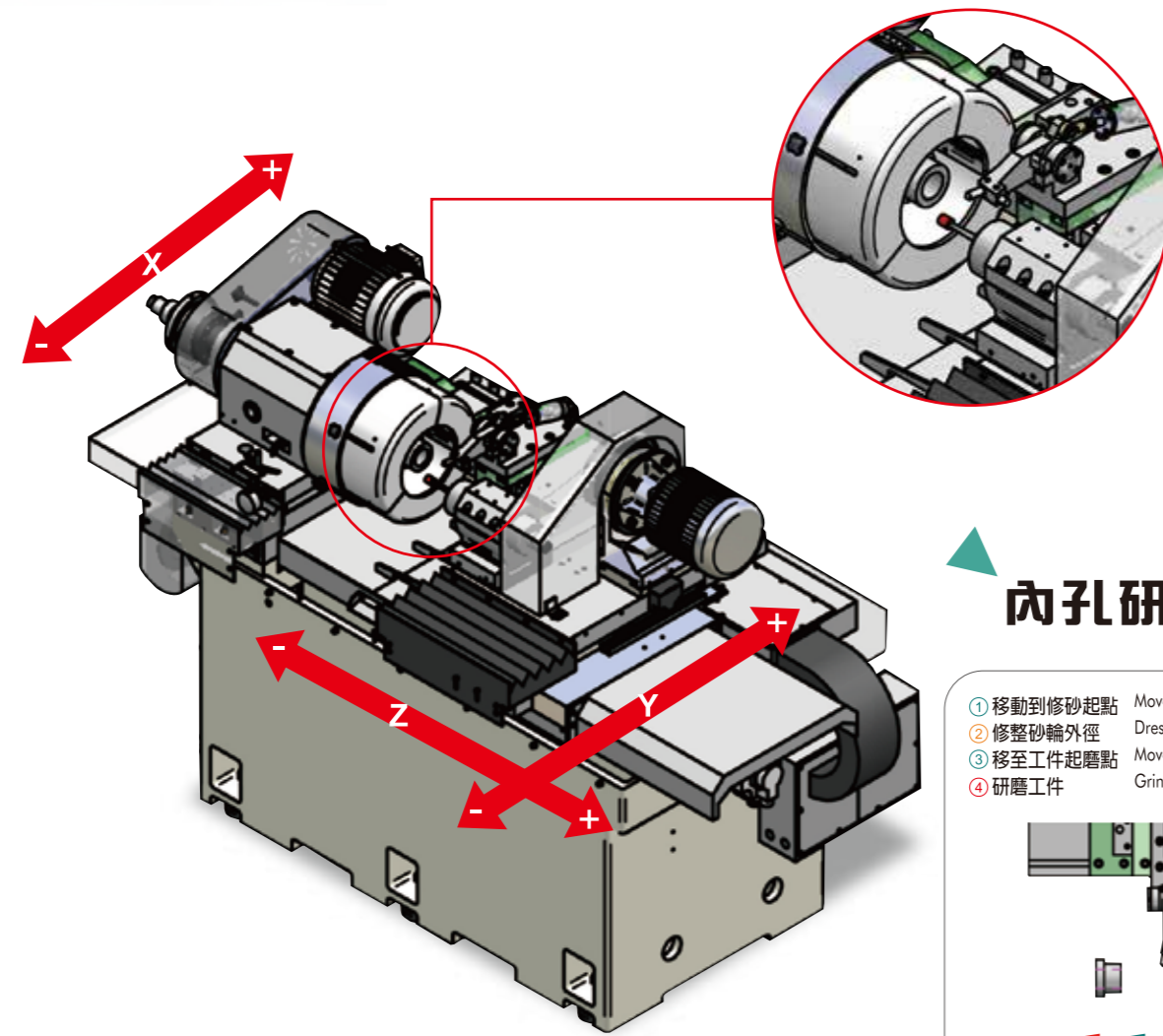
The SRI-150 from Sigma Top is designed and engineered for internal grinding of precision parts. It is capable of producing the accuracy and surface roughness you've come to expect.

- Precision machine parts
- Electronics industry
- Automotive and motorcycle parts
- Pneumatic and hydraulic parts
- Aerospace parts
- Bearings
- Medical instruments
- Cutting tools

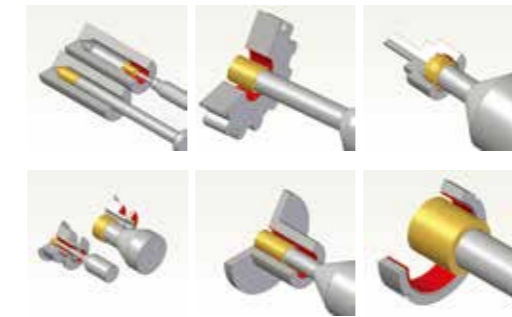
強調精密、穩定性的辛格承CNC內圓磨床，特別適用於精密機械零件，汽機車零件、醫療器材等精密零件的內孔研磨。砂輪頭最小設定單位可達0.001 mm，展現高精度研磨的獨特性能。獨創可移動式X軸，使操作更方便。更搭載最先進的教導式CNC控制器，大幅提升加工效率。

Designed with precision and stability in mind, the SIGMA TOP CNC Internal Grinder is especially ideal for precision parts grinding, such as machine parts, automotive and motorcycle parts and medical equipments, etc.

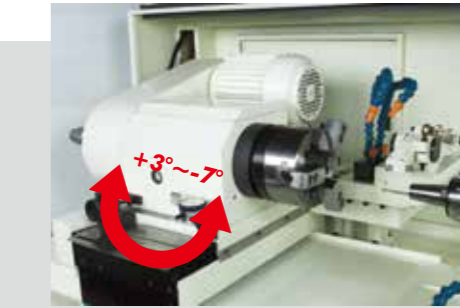
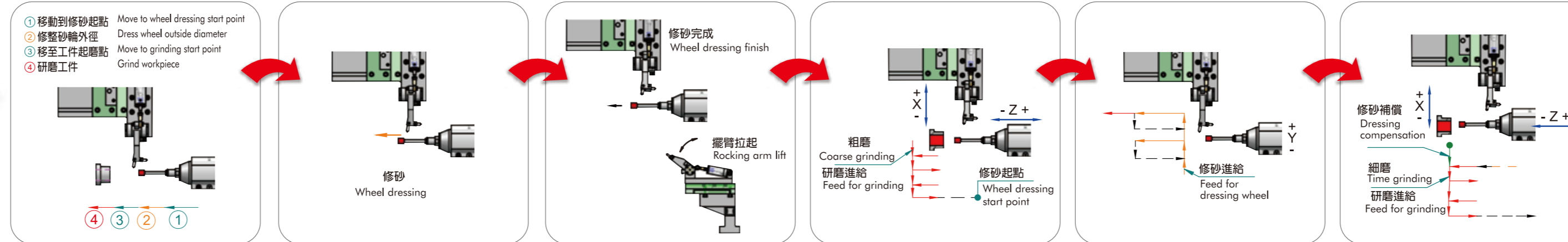
With 0.001 mm setting unit on the wheel head, this machine will fully exhibit its unmatched grinding accuracy. Exclusively designed moving X-axis provides increased convenience of operation. The machine is equipped with the latest CNC control with teach-in programming for dramatically increased efficiency.



## 研磨例 Grinding Examples



## 內孔研磨示意圖 Internal Grinding Diagram



**主軸台角度調整**  
主軸台角度調整範圍+3°~-7°適合斜度研磨。

**Work Head Swiveling Adjustment**  
The work head can be swiveled between +3°~-7° for taper grinding.



**主軸台感應器**  
主軸台裝有感應器，除了可節省砂輪及工件之裝卸時間，並可檢測主軸轉速，以及皮帶是否斷裂。

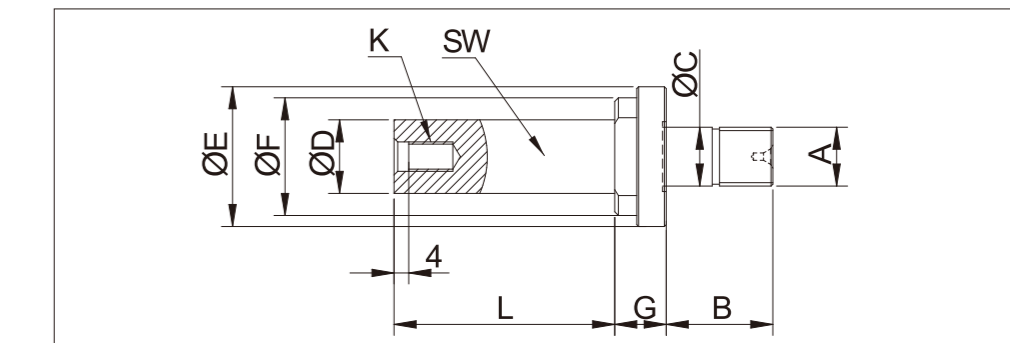
**Sensor On Work Head**  
The work head is equipped with a sensor. It not only saves time in grinding wheel and workpiece mounting and dismounting, but also can detect spindle speed and belt breakage.



**油箱**  
此油箱配備雙泵浦。可提供油壓夾頭的動力源，以及主軸台潤滑效果。

**Oil Tank**  
The oil tank is equipped with double pumps, providing power for the hydraulic chuck and lubrication for slide ways of work spindle head.

## 主軸尺寸圖 Dimensional Drawing of Spindle



註：最佳研磨工件的孔徑與研磨長度比為1:3，最大研磨長度為150 mm。  
NOTE: Optimal Grinding Size Ratio Workpiece bore: grinding length=1:3 Max. grinding length=150mm

孔徑Ø Bore Ø	主軸轉速(RPM) Spindle Speed	尺寸 Size								
		A	B	C	D	E	G	K	L	SW
80-150	8,000 Grease	M26	42	28	Ø40	58	16	M8	50 106	18
40-80	10,000 Grease	M16	29	17	Ø30	38	14	M8	90	24
	Ø25				70					
25-40	20,000 Grease	M14	28	15	Ø24	32	11	M6	80	19
	30,000 Qie mist				Ø20				60	
16-25	30,000 Grease	M10	21	10.5	Ø16	26	9	M4	40	17
	40,000 Qie mist				Ø13				30	
13-16	40,000 Grease	M8	20	8.5	Ø12	23	8	M4	35	14
	50,000 Qie mist				Ø10				30	
10-13	50,000 Grease	M7	18	7.5	Ø6	20	7	M4	30	11
	60,000 Qie mist				Ø7				25	
					Ø8				20	