

CNC 內外徑複合磨床
CNC INTERNAL CYLINDRICAL COMPLEX GRINDING MACHINE

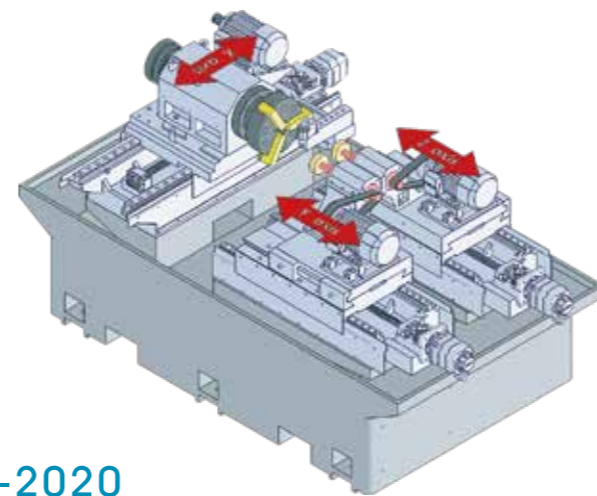


高腾达-徐国鸣/13202262841
微信号:kennethchui888
邮箱:everwinmold@163.com



各種砂輪主軸配置圖 LAYOUT OF VARIOUS WHEEL SPINDLES

三軸二砂輪機種
Three axes Two grinding wheels

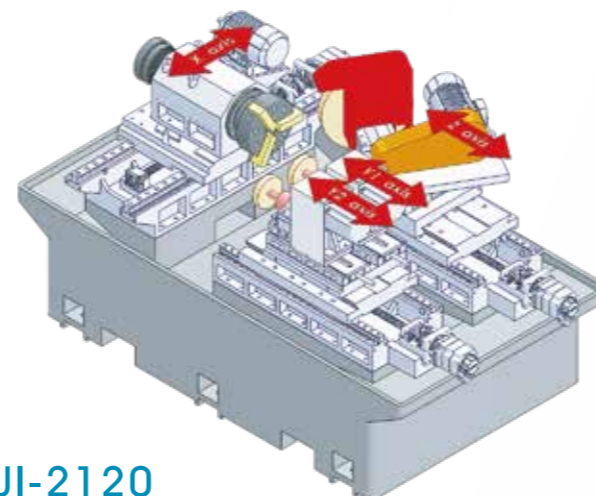


SUI-2020

Machine Features

- Twin wheel spindle design allows internal and cylindrical grinding to be accomplished at one time.
- Various models with multiple wheel spindles provide multiple surface grinding with only a single setup of the workpiece.
- The spindle head can be set within the angle range of $-5^{\circ} \sim +30^{\circ}$ for taper grinding.
- The minimum feed unit on X / Y / Z axes is 0.001 mm.
- X / Y / Z axis feeds are driven by servomotors and transmitted through ballscrews.
- X / Y / Z axes are all mounted with roller type linear guideways, providing effortless and smooth movement.
- Equipped with a Mitsubishi M80 CNC controller for user-friendly operation.
- The machine base is manufactured from high quality cast iron (FC-30), tempered and stress relieved for deformation-free performance and outstanding stability.
- Box ways or linear ways are available upon customer's request.
- Fully enclosed splash guard.

三軸三砂輪機種
Three axes Three grinding wheels

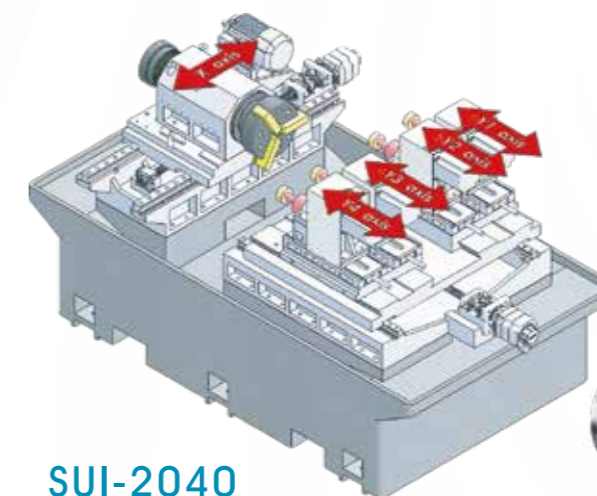


SUI-2120

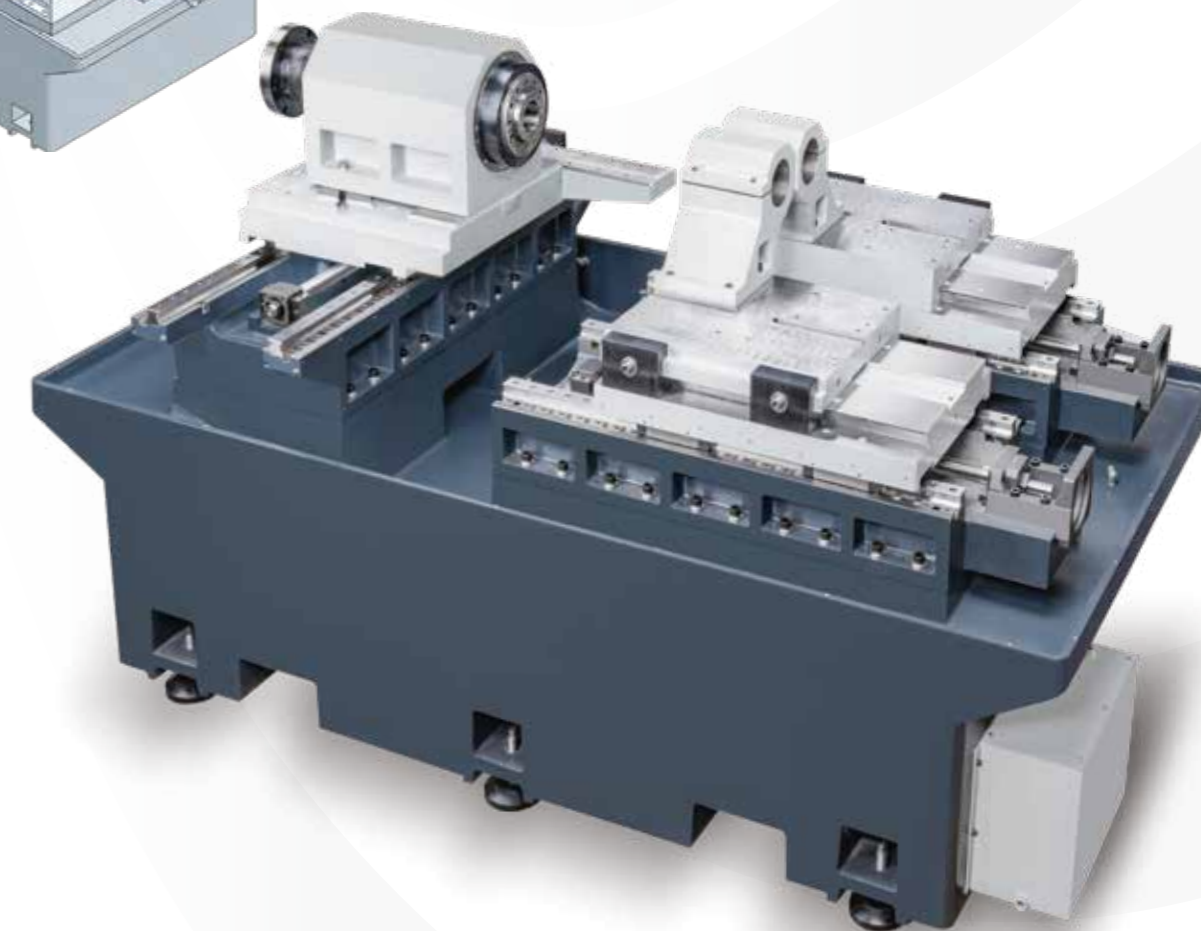
機械特性

- 雙砂輪主軸設計，內外徑研磨，一氣呵成。精準、高效率。(標準機型)
- 另有多砂輪主軸機型供選擇，多面研磨可一次完成。
- 主軸台可作 $-5^{\circ} \sim +30^{\circ}$ 角度設定，適合斜度研磨。
- X / Y / Z 軸最小位移量 0.001 mm。
- X / Y / Z 軸進給採用伺服馬達驅動，配合滾珠螺桿傳動。
- X / Y / Z 軸均配置滾柱型線性滑軌，軸向移動輕巧、順暢。
- 三菱M80 CNC控制器、操控簡易。
- 底座採用高級鑄鐵製成 (FC-30)，經回火調質及應力消除處理，機體不變形，穩定性優異。
- 軌道可依據客戶需求，設計為硬軌或線軌滑道。
- 全密閉式護罩。

二軸四砂輪機種
Two axes Four grinding wheels



SUI-2040



研磨巨集 / GRINDING MACRO



砂輪輪廓 / CONTOUR OF GRINDING WHEEL

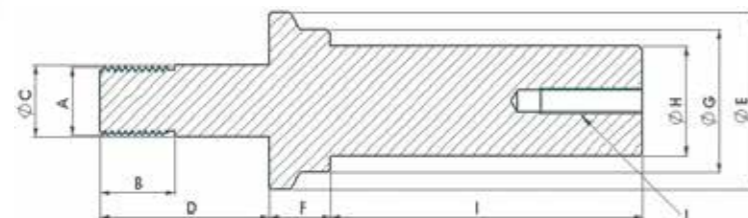


內徑研磨主軸

尹川提供各種內徑研磨主軸，以符合客戶的加工需求。

INTERNAL GRINDING MACHINE

Geogrinder offers a wide variety of internal grinding spindles to suit customers' specific machining requirements.



內徑研磨主軸規格表 SPECIFICATIONS OF INTERNAL GRINDING SPINDLE

研磨直徑 / Grinding Dia	油脂種類 / Grease Type	A	B	C	D	E	F	G	H x J	J
Ø65 ~ Ø150	8,000 rpm	M26 x 2P	28	28	42	58	16	50	Ø40 x 100	M8 x 1.25P
									Ø40 x 85	
									Ø40 x 55	
Ø40 ~ Ø80	10,000 rpm	M16 x 1.5P	17	17	29	38	14	32	Ø30 x 90	M8 x 1.25P
									Ø25 x 70	
									Ø20 x 70	
Ø35 ~ Ø70	15,000 rpm	M16 x 1.5P	17	17	29	38	14	32	Ø30 x 90	M8 x 1.25P
									Ø25 x 70	
									Ø20 x 70	
Ø24 ~ Ø40	20,000 rpm	M14 x 1.5P	10.5	10.5	28	32	11	26	Ø24 x 80	M6 x 1.0P
									Ø20 x 60	
									Ø16 x 40	
Ø15 ~ Ø25	30,000 rpm	M10 x 1.5P	10.5	10.5	21	26	9	21	Ø16 x 40	M4 x 0.7P
									Ø13 x 30	
									Ø10 x 25	
Ø12 ~ Ø16	40,000 rpm	M8 x 1.25P	8.5	8.5	20	23	8	18	Ø12 x 35	M4 x 0.7P
									Ø10 x 30	
									Ø8 x 25	
Ø9 ~ Ø13	50,000 rpm	M7 x 1P	7.5	7.5	18	20	7	15	Ø8 x 30	M4 x 0.7P
									Ø7 x 25	
									Ø6 x 20	

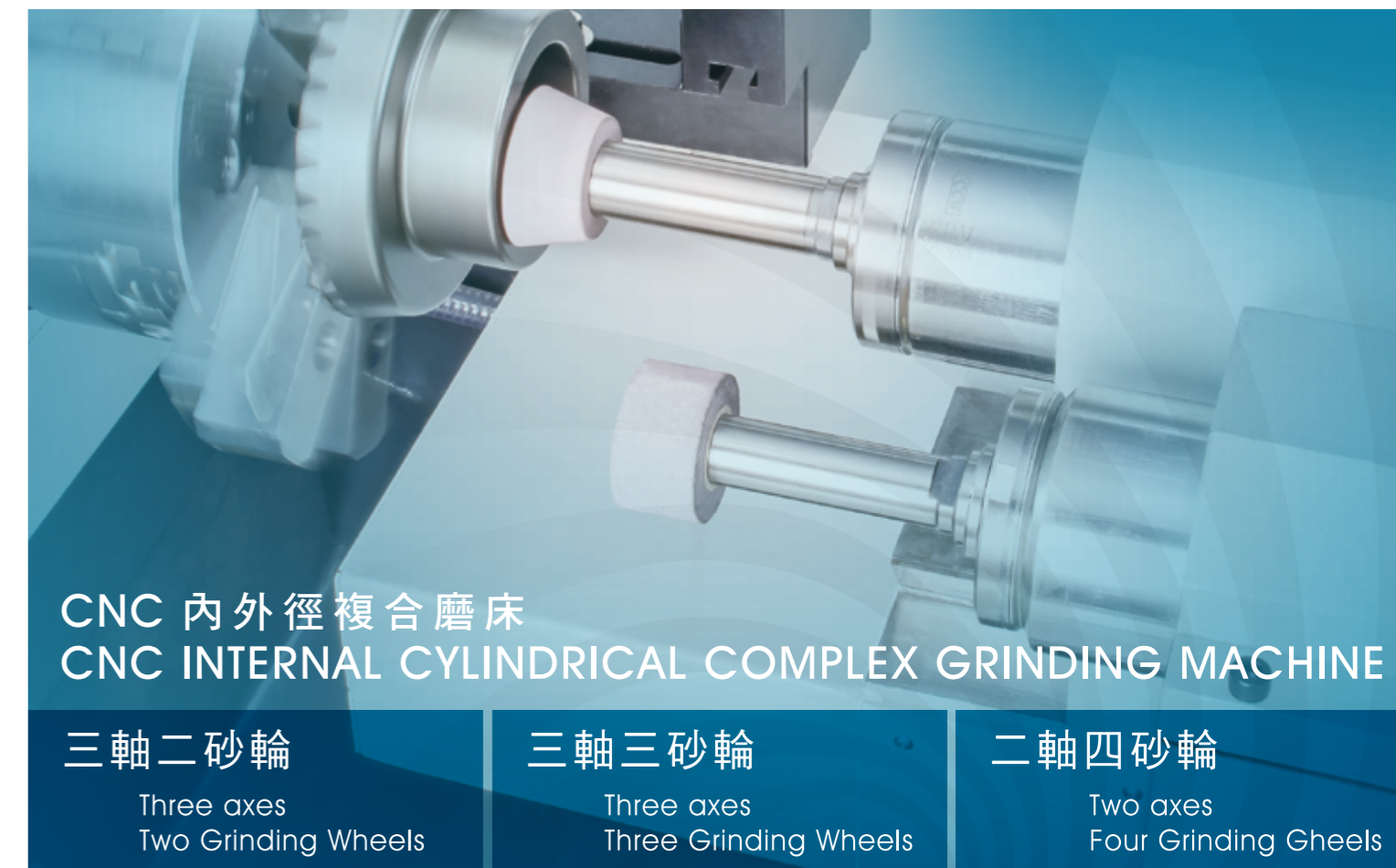
規格表 SPECIFICATIONS

項目 / MODEL	SUI-2020	SUI-2120	SUI-2040
最大可研磨外徑範圍 Max. Outside Diameter Grinding Range	Ø4 ~ 430 mm	Ø4 ~ 430 mm	Ø4 ~ 430 mm
最大可研磨長度(內徑) Max. Grinding Length (Inside Diameter)	200 mm	200 mm	200 mm
可研磨孔徑範圍 Grinding Range of Hole Diameter	Ø0 ~ 400 mm	Ø0 ~ 400 mm	Ø0 ~ 400 mm
可載裝工作重量 Workpiece Loading Capacity	56 kg	56 kg	56 kg
主軸台手動角度調整 Manual Angle Adjustment on Spindle Head	-5° ~ +30°	-5° ~ +30°	-5° ~ +30°
主軸最大旋徑 Max. Swing of Spindle	Ø450 mm	Ø450 mm	Ø450 mm
主軸迴轉速 Range of Spindle Speeds	0 ~ 1000 rpm	0 ~ 1000 rpm	0 ~ 1000 rpm
X軸最大行程 Max. Travel on X axes	750 mm	750 mm	750 mm
Y / Z軸最大行程 Max. Travel on Y / Z axes	350+200 mm	350+200 mm	350+200 mm
X / Y / Z軸最小移動單位 Minimum Feed Unit on X / Y / Z axes	0.001 mm	0.001 mm	0.001 mm
X / Y / Z軸進給速度 Feed Rates on X / Y / Z axes	0 ~ 10000 mm/min	0 ~ 10000 mm/min	0 ~ 10000 mm/min
主軸馬達 Spindle Motor	2.2 / 4P (3HP)	2.2 / 4P (3HP)	2.2 / 4P (3HP)
Y / Z軸砂輪主軸馬達 Grinding Wheel Spindle Motors on Y / Z axes	4.0 / 2P (5HP)	4.0 / 2P (5HP)	4.0 / 2P (5HP)
Y軸靜動壓主軸馬達 Static Dynamic Hybrid Spindle Motor on Y axes	-	7.5 HP	-
砂輪主軸轉速 Grinding Wheel Spindle Speed	砂輪主軸 (任選2支/油脂) 8000 ~ 50000 rpm	砂輪主軸 (任選2支/油脂) 8000 ~ 50000 rpm	砂輪主軸 (任選4支/油脂) 8000 ~ 50000 rpm
X / Y / Z軸伺服馬達 Servomotors on X / Y / Z axes	1.6 Kw	1.6 Kw	1.6 Kw
機械重量 Machine Weight	6200 kg	6500 kg	6400 kg

◎ 如有任何客製需求，歡迎來電洽詢，本公司保有修改規格之權利，不另行通知。
◎ When customized specifications are required, contact the manufacturer. Specifications shown in this catalog are subject to change without prior notice.



竝源精機有限公司
SIGMA TOP GRINDER MACHINERY CO., LTD.



竝源精機有限公司
SIGMA TOP GRINDER MACHINERY CO., LTD.

