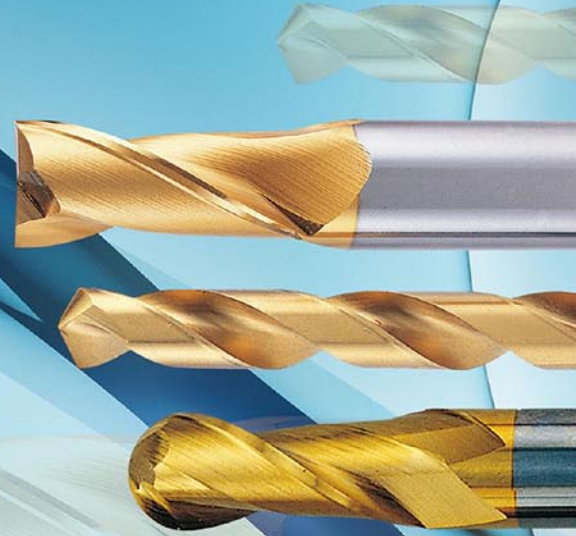




SINCE 1980



# **PEIPING**

## **UNIVERSAL TOOL & CUTTER GRINDER**

Dedicated to the pursuance of perfect design and manufacturing concept, incorporating with the continuous innovation and breakthrough. The wide range of precision tool grinders from PEIPING provide the superior operation performance.

Wyldar Group

Mobile: Kennethchui/13202262841

WeChat ID: kennethchui888

Email: everwinmold@163.com

**PEIPING PRECISION ENTERPRISE CO., LTD.**



## COMPANY PROFILE

PEIPING PRECISION ENTERPRISE CO., LTD. was established in 1980 and has been dedicated to the research and improvement of tool & cutter grinders all the time. All of the products have passed the quality inspection precisely. In addition, PEIPING PRECISION had got the Gold Medal winner at Geneva Invention and had many kinds of patents: No. 75717, No. 42447, No. 21204, etc. The quality of products is trustworthy by the customers.

### Business Philosophy

PEIPING upholds the business philosophy of "Sustainability, Growth and Excellence". With changes in time, we have imported the advanced science and technology and developed the high technical products to meet the customers' needs. At present, PEIPING PRECISION is the main professional manufacturer of tool & cutter grinder in Taiwan. Especially, we are the only producer for drill grinder that biggest drill grinding diameter is 100mm.

### Global Marketing

Our products have been sold to Europe, United States, Latin America, Asia, Middle East, Oceania, etc.

PEIPING PRECISION has the expert technique. We sincerely welcome the customers to inquire about the machinery and to have an opportunity to cooperate with us.



- Awarded Geneva Golden Prize of Invention Patent No. 21204



*Internationally  
Recognized Brand*



SINCE 1980

# PP-32N Universal Cutter Grinder

### Features:

- I. The wheel heads can be rotated 360° and be installed two wheels.  
Just rotate the wheel head, when need to grind the tool of different materials.  
It can increase the safety & save the time for changing & repairing the grinding wheel.
- II. Adopts the precision 4" 6-jaw awl type chuck. It can clip stably. At the same time, it can grind the cutting edge and web thickness of drills in one set-up.  
The both sides of drill angle and the edge length are equal. It could keep the accuracy of the center of drill without offset.
- III. Easy operation, grind fast and precisely.

### The types of tools to be ground:

Drill, step drill, center drill, spotting drill, countersink cutter, tap, chamfer cutter, edge of end mill, engraving tool, sheet metal drill, round bar, etc.



Patent No.75717  
Patented replacement-free unique cam.



### SPECIFICATIONS

Model No.	PP-32N
Grinding Capacity	φ 2 mm~ φ 32 mm
Longitudinal Travel of Table	115 mm
Horizontal Travel of Table	135 mm
Rotating Angle of Wheel Head	360°
Point Angle of Drill	90°~180°
Size of Wheel	125x50x31.75 mm
Grinding Spindle Speed	50HZ 2900 rpm 60HZ 3500 rpm
Horse Power	3/4HP (560W)
Net Weight / Gross Weight	90 kgs / 122 kgs
Packing Size (LxWxH)	95x55x68 cm

### Standard Accessories:

1. 4" 6-jaw Awl Type Chuck-1 SET
2. Chuck Handle-1 PC
3. Grinding Wheel (Type:6A)-1 PC
4. Grinding Wheel (Type:11A)-1 PC
5. Grinding Wheel Flange-2 SETS
6. Flange Wrench-1 PC
7. Morse Taper Sleeve-1 PC (No.3)
8. Screw Pin-6 PCS
9. Work Light-1 SET
10. Tools for General Use-1 SET

### Optional Accessories:

1. SDC Electroplated Grinding Wheel
2. CBN Electroplated Grinding Wheel
3. Morse Taper Sleeve (No.2)
4. Work Cabinet



# PP-600

## Universal Tool & Cutter Grinder

### Features:

- I. There are two types of wheel head: single or double.
- II. Adopt high precision cross roller guide on the table.  
The table is stable and can be operated smoothly.
- III. Adopt cast iron with high toughness.  
It can keep the precision of the machine in the long term.
- IV. There is a series of grinding attachments to choose from.

### The types of tools to be ground include:

Drill, tap, (taper) end mill, (corner) radius end mill, turning tool, radius turning tool, chamfer cutter, countersink cutter, engraving cutter, side milling cutter, hob, reamer, gun drill, hole saw, annular cutter, slitting cutter, punch, round bar, etc.

### SPECIFICATIONS

Model No.	PP-600/PP-600-DW
Longitudinal Travel of Table	185 mm
Horizontal Travel of Table	120 mm
Working Table Area	520x125 mm
Vertical Adjustment of Wheel Head	140 mm
Rotating Angle of Wheel Head	360°
Size of Wheel	125x50x31.75 mm
Grinding Spindle Speed	50HZ 2900 rpm 60HZ 3500 rpm
Horse Power	1/2HP (375W)
Net Weight / Gross Weight	130 kgs / 165 kgs
Packing Size (LxWxH)	80x75x82 cm



### Standard Accessories:

1. Grinding Wheel (Type:11A)-1 PC
2. PP-600:Grinding Wheel Flange-1 SET  
PP-600-DW:Grinding Wheel Flange-2 SETS
3. Flange Wrench-1 PC
4. Work Light-1 SET
5. Tools for General Use-1 SET

### Optional Accessories:

1. SDC Electroplated Grinding Wheel
2. CBN Electroplated Grinding Wheel
3. 5C Collet (Min.3mm~ Max.25mm)
4. 5C Special Collet (32mm/42mm)
5. Morse Taper Sleeve (No.2)
6. Work Cabinet

# PP-50

## Universal Tool & Cutter Grinder

### Features:

- I. The wheel heads can be rotated 360° and be installed two wheels.  
Just rotate the wheel head, when need to grind the tool of different materials.  
It can increase the safety & save the time for changing & repairing the grinding wheel.
- II. Adopt high precision cross roller guide on the table. The table is stable and can be operated smoothly.
- III. Adopt cast iron with high toughness. It can keep the precision of the machine in the long term.
- IV. There is a series of grinding attachments to choose from.

### The types of tools to be ground include:

Drill, tap, (taper) end mill, (corner) radius end mill, turning tool, radius turning tool, chamfer cutter, countersink cutter, engraving cutter, side milling cutter, hob, reamer, gun drill, hole saw, annular cutter, slitting cutter, punch, round bar, etc.

### SPECIFICATIONS

Model No.	PP-50
Longitudinal Travel of Table	230 mm
Horizontal Travel of Table	180 mm
Working Table Area	620x190 mm
Vertical Adjustment of Wheel Head	120 mm
Rotating Angle of Wheel Head	360°(A-axis+dual C-axis)
Size of Wheel	125x50x31.75 mm 180x26x31.75 mm
Grinding Spindle Speed	50HZ 2900 rpm 60HZ 3500 rpm
Horse Power	3/4HP (560W)
Net Weight / Gross Weight	252 kgs / 318 kgs
Packing Size (LxWxH)	105x90x154 cm

### Patent No. 42447

The spindle of wheel head is designed with A-axis+dual C-axis. The motor can be rotated 360°. Set the radial rake and relief angle easily. It can increase the grinding range & function of machinery.



### Standard Accessories:

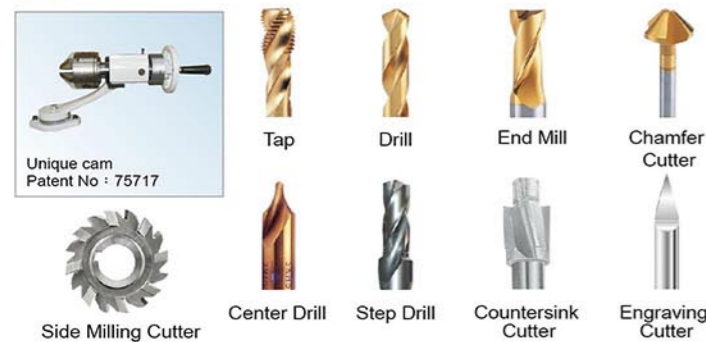
1. Grinding Wheel (Type:5A)-1 PC
2. Grinding Wheel (Type:11A)-1 PC
3. Grinding Wheel Flange-2 SETS
4. Flange Wrench-1 PC
5. Work Light-1 SET
6. Tools for General Use-1 SET
7. Work Cabinet-1 SET

### Optional Accessories:

1. SDC Electroplated Grinding Wheel
2. CBN Electroplated Grinding Wheel
3. 5C Collet (Min.3mm~ Max.25mm)
4. 5C Special Collet (32mm/42mm)
5. Morse Taper Sleeve (No.2)
6. Cast Iron Work Cabinet

### Grinding Attachment

#### 600K/50K Tool & Cutter Grinding Attachment $\phi$ 2mm~ $\phi$ 32mm



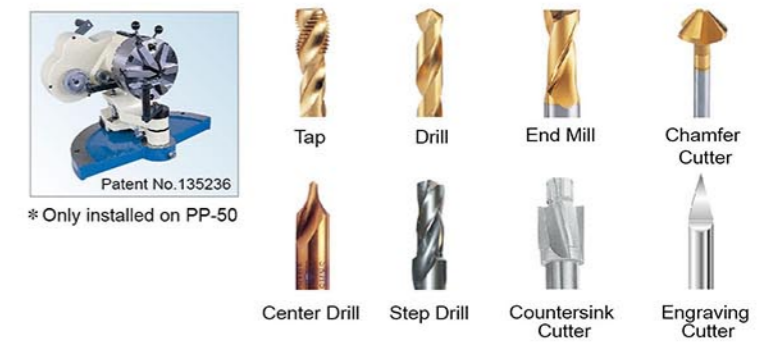
#### 600D/50D End Mill Grinding Attachment



#### 600F/50F Turning Tool Grinding Attachment



#### 50B Drill & Tap Grinding Attachment $\phi$ 2mm~ $\phi$ 60mm



#### 50SA Sprial Flute/ Helical Tool Grinding Attachment $\phi$ 6mm~ $\phi$ 32mm



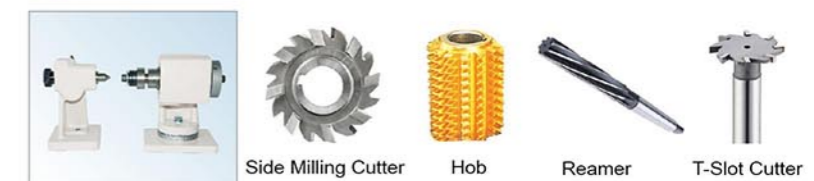
#### 50E Radius End Mill Grinding Attachment $\phi$ 3mm~ $\phi$ 25mm



#### 50EF Radius Turning Tool Grinding Attachment



#### 50H Tool Grinding Attachment



# PP-60N

## Universal Drill & Tap Grinder

### Features:

- I. There are two types of grinding wheels (5A & 12A) on wheel head of PP-60N. The end & chisel edge can be ground without changing the grinding wheel.
- II. For dressing grinding wheel, set the diamond dresser on the chuck and adjust the chuck grinding angle. The wheel motor can be adjusted 160mm vertically, 180mm horizontally and rotate 180°. It can increase the function of machinery.
- III. Adopts the precision awl type chuck. It can clip stably. At the same time, it can grind the cutting edge and web thickness of drills in one set-up. The both sides of drill angle and the edge length are equal. It could keep the accuracy of the center of drill without offset.
- IV. Easy operation, grind fast and precisely.

### The types of tools to be ground:

Drill, step drill, center drill, spotting drill, countersink cutter, tap, chamfer cutter, edge of end mill, engraving tool, sheet metal drill, round bar, etc.

### SPECIFICATIONS

Model No.	PP-60N
Grinding Capacity	φ 2 mm~ φ 60 mm
Longitudinal Travel of Table	240 mm
Horizontal Travel of Table	180 mm
Vertical Adjustment of Wheel Head	160 mm
Clearance Angle of Drill	0°~18°
Point Angle of Drill	40°~180°
Size of Wheel	180x19x31.75 mm 180x32x31.75 mm
Grinding Spindle Speed	50HZ 2800 rpm 60HZ 3360 rpm
Horse Power	1HP (750W)
Net Weight / Gross Weight	240 kgs / 310 kgs
Packing Size (LxWxH)	100x95x156 cm

### PP-60N Standard Accessories:

1. 6" 6-jaw Awl Type Chuck-1 SET
2. Chuck Handle-1 PC
3. Grinding Wheel (Type:5A)-1 PC
4. Grinding Wheel (Type:12A)-1 PC
5. Grinding Wheel Flange-1 SET
6. Flange Wrench-1 PC
7. Morse Taper Sleeve- 3 PCS (No.3,4,5)
8. Cam-5 PCS (No.4,6,8,9,A2)
9. Work Light-1 SET
10. Tools for General Use-1 SET
11. Work Cabinet-1 SET

### PP-60N Optional Accessories:

1. SDC Electroplated Grinding Wheel
2. CBN Electroplated Grinding Wheel
3. Cooling System
4. Auto Cycle Motor



Patent No. 135236  
Double cams. It can grind tool of 1/2/3/4/6 Flutes.



# PP-80N/100N

## Universal Drill & Tap Grinder

### Features:

- I. For dressing grinding wheel, set the diamond dresser on the chuck and adjust the chuck grinding angle. The wheel motor can be adjusted 160mm vertically, 180mm horizontally and rotate 180°. It can increase the function of machinery.
- II. Adopts the precision awl type chuck. It can clip stably. At the same time, it can grind the cutting edge and web thickness of drills in one set-up. The both sides of drill angle and the edge length are equal. It could keep the accuracy of the center of drill without offset.
- III. Easy operation, grind fast and precisely.

### The types of tools to be ground:

Drill, step drill, center drill, spotting drill, countersink cutter, tap, chamfer cutter, edge of end mill, engraving tool, sheet metal drill, round bar, etc.

### SPECIFICATIONS

Model No.	PP-80N	PP-100N
Grinding Capacity	φ 4 mm~ φ 80 mm	φ 5 mm~ φ 100 mm
Longitudinal Travel of Table	240 mm	240 mm
Horizontal Travel of Table	180 mm	180 mm
Vertical Adjustment of Wheel Head	160 mm	160 mm
Clearance Angle of Drill	0°~18°	0°~18°
Point Angle of Drill	40°~180°	40°~180°
Size of Wheel	180x50x31.75 mm	180x50x31.75 mm
Grinding Spindle Speed	50HZ 2800 rpm 60HZ 3360 rpm	
Horse Power	2HP (1500W)	
Net Weight / Gross Weight	309 kgs / 379 kgs	316 kgs / 386 kgs
Packing Size (LxWxH)	113x100x155 cm	113x100x155 cm

### PP-80N/100N Standard Accessories:

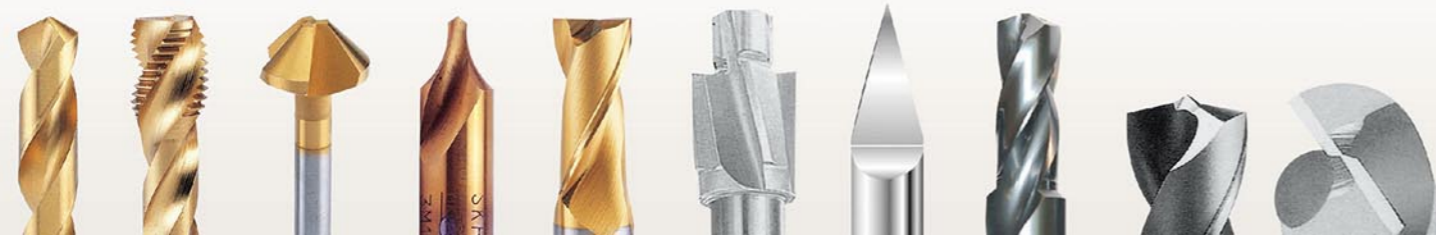
1. PP-80N: 7" 6-jaw Awl Type Chuck-1 SET;  
PP-100N: 9" 8-jaw Awl Type Chuck-1 SET
2. Chuck Handle-1 PC
3. Grinding Wheel (Type:7A)-1 PC
4. Grinding Wheel Flange-1 SET
5. Flange Wrench-1 PC
6. Morse Taper Sleeve- 4 PCS (No.3,4,5,6)
7. Cam-5 PCS (No.4,6,8,9,A2)
8. Auto Cycle Motor-1 SET
9. Cooling System-1 SET
10. Work Light-1 SET
11. Tools for General Use-1 SET
12. Work Cabinet-1 SET

### PP-80N/100N Optional Accessories:

1. SDC Electroplated Grinding Wheel
2. CBN Electroplated Grinding Wheel



Patent No. 135236  
Double cams. It can grind tool of 1/2/3/4/6 Flutes.



# PP-08 / PP-08L

## Gun Drill Grinder

### Features:

- I. PP-08 series applies the leverage. It can grind the internal and external angle of gun drill.
- II. Adopts the precision 6-jaw awl type chuck. It can clip stably and grind the 6 faces of gun drill. Any sizes could be ground and keep the accuracy of the center of drill without offset.

### SPECIFICATIONS

Model No.	PP-08	PP-08L
Grinding Capacity	φ2mm~φ32mm	φ5mm~φ60mm
Longitudinal Travel of Table	185mm	230mm
Horizontal Travel of Table	120mm	180mm
Working Table Area	520x125mm	620x190mm
Vertical Adjustment of Wheel Head	140mm	120mm
Rotating Angle of Wheel Head	360°	360°(A-axis+dual C-axis)
Size of Wheel	125x50x31.75mm	125x50x31.75mm
Grinding Spindle Speed	50HZ 2900 rpm ; 60HZ 3500 rpm	
Horse Power	1/2HP (375W)	3/4HP (560W)
Net Weight / Gross Weight	150 kgs / 210 kgs	293 kgs / 359 kgs
Packing Size (LxWxH)	85x83x155 cm	105x90x155 cm

### Standard Accessories:

1. PP-08: Grinding Attachment for Gun Drill (φ2mm~φ32mm)-1 SET  
PP-08L: Grinding Attachment for Gun Drill (φ5mm~φ60mm)-1 SET
2. SDC Resinoid Grinding Wheel (Type:11A2)-1 PC
3. Grinding Wheel Flange-1 SET

4. Flange Wrench-1 PC
5. Tool Fixed Block-1 PC
6. Work Light-1 SET
7. Tools for General Use-1 SET
8. Work Cabinet-1 SET



# PP-11

## Hole Saw & Annular Cutter Grinder

### Features:

- I. The maximum grinding capacity is 100mm.
- II. Adopts the precision 6-jaw awl type chuck. It can clip stably and grind precisely.
- III. It can grind the internal and external angle of tools within minimum angle.

### SPECIFICATIONS

Model No.	PP-11
Longitudinal Travel of Table	185mm
Horizontal Travel of Table	120mm
Working Table Area	520x125mm
Vertical Adjustment of Wheel Head	140mm
Rotating Angle of Wheel Head	360°
Size of Wheel	100x30x31.75mm
Grinding Spindle Speed	50HZ 2900 rpm 60HZ 3500 rpm
Horse Power	1/2HP (375W)
Net Weight / Gross Weight	155 kgs / 186 kgs
Packing Size (LxWxH)	80x75x82 cm

### Standard Accessories:

1. SDC Electroplated Grinding Wheel (Type:6A2)-1 PC
2. Grinding Wheel Flange-1 SET
3. Flange Wrench-1 PC
4. Work Light-1 SET
5. Tools for General Use-1 SET

### Optional Accessories:

1. SDC Electroplated Grinding Wheel
2. CBN Electroplated Grinding Wheel
3. Work Cabinet



# PP-50S

## Slitting Cutter Grinder

### Features:

Suitable for round knife, slitter knife and slitting cutter.

### SPECIFICATIONS

Model No.	PP-50S
Longitudinal Travel of Table	230mm
Horizontal Travel of Table	180mm
Working Table Area	620x190mm
Vertical Adjustment of Wheel Head	120mm
Rotating Angle of Wheel Head	360°(A-axis+dual C-axis)
Size of Wheel	125x50x31.75mm 180x26x31.75mm 180x3x31.75mm
Grinding Spindle Speed	50HZ 2900 rpm 60HZ 3500 rpm
Horse Power	3/4HP (560W)
Net Weight / Gross Weight	295 kgs / 361 kgs
Packing Size (LxWxH)	105x90x155 cm

### Standard Accessories:

1. Grinding Wheel (Type:5A)-1 PC
2. Grinding Wheel (Type:11A)-1 PC
3. CBN Resinoid Grinding Wheel (Type:1A1R)-1 PC
4. Grinding Wheel Flange-2 SETS
5. Flange Wrench-1 PC
6. Shaft-1 PC
7. Speed Control Motor-1 SET
8. Cooling System-1 SET
9. Work Light-1 SET
10. Tools for General Use-1 SET
11. Work Cabinet-1 SET

### Optional Accessories:

1. CBN Resinoid Grinding Wheel
2. Shaft (Customized Specification)
3. Oversize Grinding Attachment
4. X-axis Speed Control Motor with Reciprocation Device



# PP-50T / PP-50TL

## Straight Flute Tap Grinder

### Features:

- I. There are two range of grinding capacity: φ2~32mm & φ5~60mm.
- II. Suitable for straight flute of nut tap (bent shank), spiral point tap, hand tap and pipe tap.

### SPECIFICATIONS

Model No.	PP-50T	PP-50TL
Grinding Capacity	φ2mm~φ32mm	φ5mm~φ60mm
Longitudinal Travel of Table	230mm	230mm
Horizontal Travel of Table	180mm	180mm
Working Table Area	620x190mm	620x190mm
Vertical Adjustment of Wheel Head	120mm	120mm
Rotating Angle of Wheel Head	360°(A-axis+dual C-axis)	
Size of Wheel	180x19x31.75mm 145x15x31.75mm / 175x15x31.75mm	
Grinding Spindle Speed	50HZ 2900 rpm 60HZ 3500 rpm	
Horse Power	3/4HP (560W)	
Net Weight / Gross Weight	284 kgs / 350 kgs	310 kgs / 376 kgs
Packing Size (LxWxH)	105x90x155 cm	105x90x155 cm

### Standard Accessories:

1. PP-50T: Grinding Attachment for Straight Flute Tap (φ2mm~φ32mm)-1 SET  
PP-50TL: Grinding Attachment for Straight Flute Tap (φ5mm~φ60mm)-1 SET
2. Grinding Wheel (Type:12A)-1 PC
3. CBN Electroplated Grinding Wheel (Type:12AR)-1 PC

4. Grinding Wheel Flange-2 SETS
5. Flange Wrench-1 PC
6. Index Plate (3.4.5 Flutes)-1 PC
7. Cooling System-1 SET
8. Work Light-1 SET
9. Tools for General Use-1 SET
10. Work Cabinet-1 SET

### Optional Accessories:

1. SDC Electroplated Grinding Wheel
2. CBN Electroplated Grinding Wheel
3. X-axis Speed Control Motor with Reciprocation Device



# PP-80SF

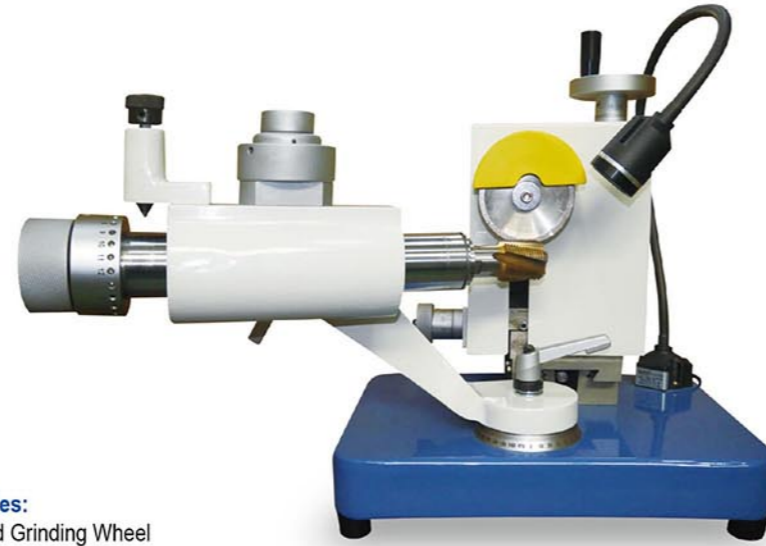
## Spiral Flute/ Helical Tool FAST Grinder

### Features:

Specially for grinding 2, 3, 4, 6 flutes spiral flute and helix angle cutting tools.  
Grind smoothly and precisely.

### SPECIFICATIONS

Model No.	PP-80SF
Max. Clamping Diameter	φ25 mm
Length of Spiral Flute	70 mm (Non-standard size can be customized)
Horizontal Travel of Table	20 mm
Longitudinal Travel of Table	20 mm
Vertical Adjustment of Wheel Head	20 mm
Net Weight / Gross Weight	35 kgs / 45 kgs
Packing Size (LxWxH)	60x40x40 cm



### Standard Accessories:

1. Diamond Grinding Wheel-1 PC
2. 5C Collets-7 PCS (6,8,10,12,16,20,25mm)
3. LED Work Light-1 SET
4. Tools for General Use-1 SET

### Optional Accessories:

1. SDC Electroplated Grinding Wheel
2. CBN Electroplated Grinding Wheel
3. Work Cabinet

# PP-U2

## Universal Cutter Grinder

### Features:

- The index head is universal: It can set the taper angle and relief angle. Rotate 360° and 180°. It can grind round, half round, taper angle and right angle of engraving tools.
- It is provided at 24 positions so that any particular angle or shape can be obtained.
- There are special grinding attachments for flutes of end mill, drill and turning tool.

### SPECIFICATIONS

Model No.	PP-U2
Max. Collet Capacity	18 mm
Max. Grinding Dimension	25 mm
Taper Angle	0°~180°
Relief Angle	0°~45°
Negative Taper Angle	0°~26°
Size of Wheel	100x50x20 mm
Grinding Spindle Speed	3600 rpm
Horse Power	1/3HP (250W)
Net Weight / Gross Weight	32 kgs / 42 kgs
Packing Size (LxWxH)	55x45x47 cm

### Standard Accessories:

1. Diamond Dresser-1 PC
2. Grinding Wheel (Type:6A)-1 PC
3. Grinding Wheel Flange-1 SET
4. U2 Collets-5 PCS (4,6,8,10,12mm)
5. Aligning Finger-1 PC
6. Drive Belt-1 SET
7. Lock Pin-1 SET
8. Tools-1 SET
9. Work Light-1 SET

### Optional Accessories:

1. Grinding Attachment for φ20 & φ25mm
2. Microscope
3. Grinding Wheel Balancing Stand
4. PP-U2 Collets- 1, 2, 2.5, 3, 5, 7, 9, 18, 20, 25mm and 1/8", 1/4", 5/16", 3/8", 1/2", 5/8"
5. Electroplated Grinding Wheel
6. Work Cabinet



# PP-25

## Precision End Mill Grinder

### Features:

Specially designed for grinding end cutting edge, relief (chip space), end gash and peripheral cutting edge. Just set up once.

### SPECIFICATIONS

Model No.	PP-25
Grinding Capacity	φ3 mm~φ25 mm
Longitudinal Travel of Table	50 mm
Horizontal Travel of Table	50 mm
Size of Wheel	125x50x31.75 mm
Grinding Spindle Speed	50HZ 2900 rpm 60HZ 3500 rpm
Horse Power	1/2HP (375W)
Net Weight / Gross Weight	50 kgs / 82 kgs
Packing Size (LxWxH)	80x65x68 cm



### Standard Accessories:

1. Grinding Wheel (Type:11A)-1 PC
2. Grinding Wheel Flange-1 SET
3. Flange Wrench-1 PC
4. 5C Collet-7 PCS (6,8,10,12,16,20,25mm)
5. Work Light-1 SET
6. Tools for General Use-1 SET

### Optional Accessories:

1. SDC Electroplated Grinding Wheel
2. CBN Electroplated Grinding Wheel
3. 5C Collet (Min.3mm~ Max.25mm)
4. Work Cabinet

# PP-26/PP-26 L

## Rotary Cutting-off & Grinding Machine

### Features:

- Suitable for the tungsten carbide and high speed steel work piece.
- Adopt keyless centering chuck.
- Rotary cutting-off, no heat and steady stiffness.
- Cutting-off and grinding in one machine.

### SPECIFICATIONS

Model No.	PP-26	PP-26L
Max. Grinding Capacity	25 mm	
Scale	300L	600L
Size of Cutting-off Wheel	180x1x31.75 mm	
Size of Grinding Wheel	100x50x20 mm	
Grinding Spindle Speed	50HZ 2900 rpm 60HZ 3500 rpm	
Horse Power	1HP (750W)	
Net Weight / Gross Weight	95 kgs / 122 kgs	
Packing Size (LxWxH)	59x56x67 cm	

### Standard Accessories:

1. Grinding Wheel (Type:6A)-1 PC
2. General Cutting-off Wheel-1 PC
3. Chuck Handle-1 PC

### Optional Accessories:

1. Grinding Wheel
2. SDC Electroplated Grinding Wheel
3. CBN Electroplated Grinding Wheel
4. SDC Cutting-off Wheel
5. CBN Cutting-off Wheel



# PP-125

## Turning Tool Grinder

### Features:

- I. Suitable for various types of turning tool.
- II. Wheel rotation is reversible. Allows for right or left hand grinding.

### SPECIFICATIONS

Model No.	PP-125
Point Angle of Tool	90°~180°
Back Rake Angle of Tool	0°~15°
Size of Wheel	125x8x31.75 mm
Speed of Wheel	3420 rpm
Horse Power	1/3HP (250W)
Net Weight / Gross Weight	33 kgs / 35 kgs
Packing Size (LxWxH)	50x40x40 cm

### Standard Accessories:

1. SDC Resinoid Grinding Wheel (12Y9C)-1 PC
2. Work Light-1 SET

### Optional Accessories:

1. SDC Resinoid Grinding Wheel
2. CBN Resinoid Grinding Wheel



# Precision Drill Grinder

## Cutting-Off Machine



### Precision Drill Grinder

Model No.	PP-13A	PP-20X
Grinding Capacity	φ 2.5 mm~ φ 13 mm	φ 3 mm~ φ 20 mm
Grinding Spindle Speed	4600 rpm	4300 rpm
Weight	10 kgs	19 kgs
Packing Size	30.5x17.2x18 cm	43x22x22 cm



### Sheet Metal Drill Grinder

Model No.	PP-13SX
Grinding Capacity	φ 2 mm~ φ 13 mm
Grinding Spindle Speed	4300 rpm
Weight	11 kgs
Packing Size	34x18.5x21 cm



Sheet Metal drill



### Precision Drill Grinder

Model No.	PP-26X	PP-32X
Grinding Capacity	φ 12 mm~ φ 26 mm	φ 12 mm~ φ 32 mm
Grinding Spindle Speed	3700 rpm	3700 rpm
Weight	29 kgs	32 kgs
Packing Size	47x26x23.5 cm	47x26x23.5 cm



### X-type (SG type) Drill Grinder

Model No.	PP-13X
Grinding Capacity	φ 3 mm~ φ 13 mm
Grinding Spindle Speed	5500 rpm
Weight	10 kgs
Packing Size	34x19.5x21 cm



X-type drill

# PP-400

## Auto Saw Blade Grinder

### Features:

- I. Suitable for HSS circular saw blade.
- II. Fast grinding and simple operation.

### SPECIFICATIONS

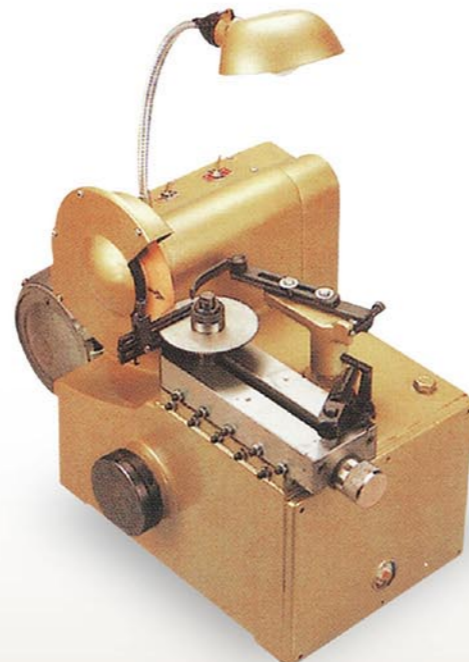
Model No.	PP-400
Grinding Capacity	φ 20 mm~ φ 400 mm
Size of Wheel	150x7x50Vx19.05 mm
Speed of Wheel	4000 rpm
Horse Power	1/4HP (185W)
Net Weight / Gross Weight	46 kgs / 58 kgs
Packing Size (LxWxH)	81x38x50 cm

### Standard Accessories:

1. Grinding Wheel-1 PC
2. Diamond Dresser-1 PC

### Optional Accessories:

1. Grinding Wheel
2. SDC Electroplated Grinding Wheel
3. CBN Electroplated Grinding Wheel



### Features:

- I. UG Drill Type - Promote the working efficiency
- II. Choose optional attachment to modify original drill into SG drill

### Super Drill Grinder

Model No.	PP-13AM	PP-20XM
Grinding Capacity	φ 2 mm~ φ 13 mm	φ 2 mm~ φ 20 mm
Grinding Spindle Speed	6200 rpm	6200 rpm
Weight	22.5 kgs	23.5 kgs
Packing Size	45x29x40 cm	45x29x40 cm



### Cutting-off Machine

Model No.	PP-16C
Grinding Capacity	φ 3 mm~ φ 16 mm
Grinding Spindle Speed	6000 rpm
Weight	13.5 kgs
Packing Size	34x21x21 cm

➤ Precision End Mill Grinder  
➤ Combination Drill & End Mill Grinder



Precision End Mill Grinder (Wag Grinding)

Model No.	PP-12D
Grinding Capacity	φ 4 mm~ φ 12 mm
Grinding Spindle Speed	5300 rpm
Weight	9 kgs
Packing Size	33x18x18 cm



Fast End Mill Grinder

Model No.	PP-20D
Grinding Capacity	φ 6 mm~ φ 20 mm
Grinding Spindle Speed	6200 rpm
Weight	13.5 kgs
Packing Size	39x29x24 cm

➤ PP-12DM / PP-20DM  
Super End Mill Grinder



Features:

- I. Re-sharpen the end mill PLUS 2 additional functions you could choose from: Cutting-off/ Neck Reduction+Side Lock/ Edge Honing/ Corner Radius.
- II. Same machine to upgrade, Add the Expansion Kit.

SPECIFICATIONS

Model No.	PP-12DM	PP-20DM
Grinding Capacity	φ 6 mm~ φ 12 mm	φ 6 mm~ φ 20 mm
Grinding Spindle Speed	6200 rpm	6200 rpm
Weight	25.5 kgs	26.5 kgs
Packing Size	45x29x40 cm	45x29x40 cm

➤ PP-213CM / PP-220CM  
Combination Drill & End Mill Grinder



Features:

- I. Two functions in one machine, Grinding Drill & End Mill.
- II. Same machine to upgrade, Add the Expansion Kit.

SPECIFICATIONS

Model No.	PP-213CM	PP-220CM
Grinding Capacity	Drill φ 2 mm~ φ 13 mm	Drill φ 2 mm~ φ 20 mm
	End Mill φ 6 mm~ φ 12 mm	End Mill φ 6 mm~ φ 20 mm
Grinding Spindle Speed	6200 rpm	6200 rpm
Weight	23 kgs	25 kgs
Packing Size	45x29x40 cm	45x29x40 cm

➤ PP-DM  
Diamond & PCBN Tool Grinder

Features:

The machine is mainly used for grinding PCD, PCBN, CBN and carbide tools. You can position the tool precisely and make sure the position by CCD and monitor. The CCD is for checking the surface of tools and measure the tools. Remark: For the diamond/ PCD form tools, we could offer customized service.

SPECIFICATIONS

Model No.	PP-DM
Longitudinal Travel of Cross Work Table	70 mm
Horizontal Travel of Cross Work Table	65 mm
Spindle Center Height	150 mm
Variable Swing Distance	0-15 mm
Variable Swing Speed	0-60 Hz/min.
Variable Swing Position	250 mm
Variable Spindle Angle	-5°~25°±10°
Size of Wheel	150x40x40 mm
Grinding Spindle Speed	0-3000 rpm
Voltage	220V
Net Weight / Gross Weight	350 kgs / 424 kgs
Packing Size (LxWxH)	104x104x195 cm

Standard Accessories:

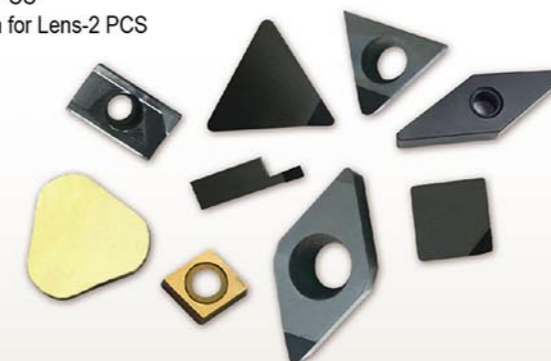
1. Vitrified Diamond Grinding Wheel-1 PC
2. Grinding Wheel Flange-1 SET
3. Flange Wrench-1 PC
4. Work Light-1 SET
5. Cooling System-1 SET
6. CCD & Monitor-1 SET
7. Rock Type Lubricator-1 SET
8. Variable Frequency Drive-2 SETS
9. Tools for General Use-1 SET

Optional Accessories:

1. Vitrified Diamond Grinding Wheel
2. Vitrified Diamond Grinding Wheel (Made in Japan)
3. Grinding Wheel Flange
4. Oil Stone
5. Auto Lubricator
6. Hollow Rotary Reducer
7. Human Machine Interface
8. Measurement Software for CCD
9. Full Guard

Tools for General Use:

1. Hexagon Wrench-10 PCS
2. Screwdriver-1 PC
3. T-Type Wrench-1 PC
4. Open Wrench-4 PCS
5. Hexagon Wrench for Lens-2 PCS





# PP-A1

## Precision Spindle Polishing Machine

### Features:

- I. Automatic spindle polishing control.
- II. Keep the precision of spindle and no damage to spindle body.
- III. One setting for the maximum convenience of operation.

### After Use:

- I. Extend the life of cutting tools.
- II. Increase the workpiece accuracy.
- III. Reduce the spindle vibration and extend the life of spindle.

### SPECIFICATIONS

Model No.	PP-A1
Taper Type of Spindle	BT Series
Speed of Spindle	30000 rpm
Voltage	100V / 110V / 220V / 240V
Net Weight / Gross Weight	11 kgs / 12 kgs
Packing Size (LxWxH)	36x27x45 cm

### Standard Accessories:

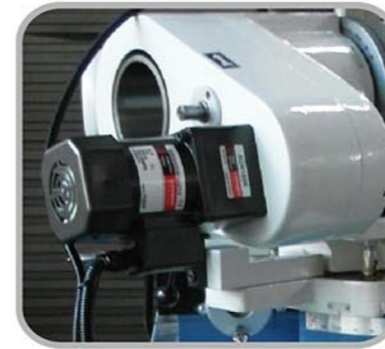
1. Grinding Wheel- for Polishing 2 PCS
2. Grinding Wheel- for Grease Dirt 2 PCS
3. Grinding Wheel- for Rust 2 PCS
4. Transformer-1 SET
5. 6mm Chuck-1 PC
6. Chuck Wrench-1 PC

### Optional Accessories:

1. Grinding Wheel- for Polishing
2. Grinding Wheel- for Grease Dirt
3. Grinding Wheel- for Rust



# Optional Accessories



**MTOR-AC**  
•Auto cycle motor



**WKL-LED**  
•LED Work light



**WKL-HL**  
•Halogen work light



**LINSC-S/M**  
•Linear scale+DRO



**CCD**  
•CCD



**WKCB**  
•Work cabinet



**YC-602**  
•Dust collection



**T-INDEX**  
•Teeth index device



**PP-CLM**  
•Cooling system

# PP-A2

## Tool Holder Maintenance & Polish Machine

### Features:

- I. Extend tool holder life.
- II. Increase tool holder accuracy.
- III. Polish & clean the grease and dirt on holder.
- IV. One setting for the maximum convenience of operation.

### Standard Accessories:

1. Abrasive Paper-3 PCS
2. Hexagon Wrench-1 PC

### Optional Accessories:

1. Abrasive Paper



### SPECIFICATIONS

Model No.	PP-A2
Specification of Tool Holder	BT30 / BT40 / BT50
Voltage	110V / 220V
Net Weight / Gross Weight	25 kgs / 27 kgs
Packing Size (LxWxH)	40x40x48 cm



**LBS**  
•Level balancing stand



**WBS**  
•Wheel balancing stand



**LBS-ARB**  
•Arbor for balancing stand

# Accessories for machine

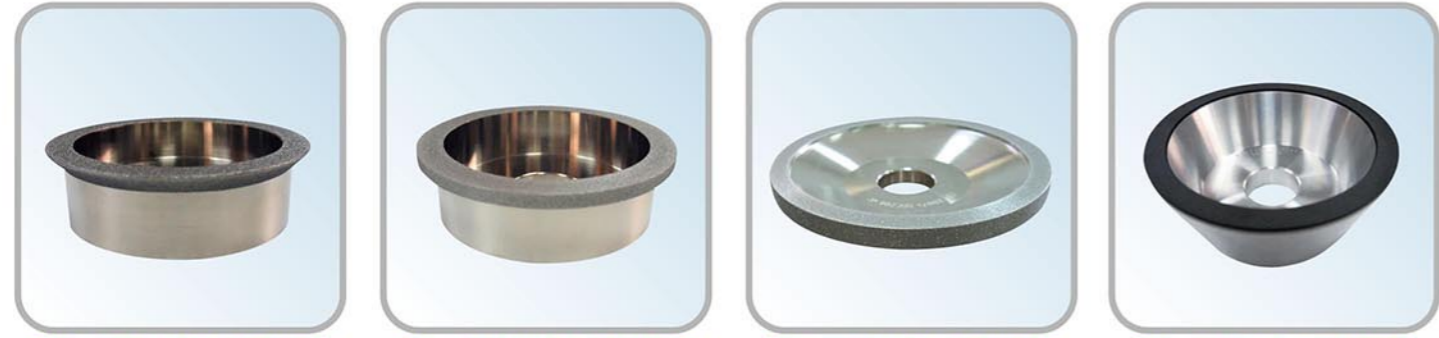


**GW-05A**  
● Grinding wheel-5A

**GW-06A**  
● Grinding wheel-6A

**GW-11A**  
● Grinding wheel-11A

**GW-12A**  
● Grinding wheel-12A



**GW-6A245V-WO-SDC/CBN**  
● Electroplated grinding Wheel-6A245V

**GW-6A290V-WO-SDC/CBN**  
● Electroplated grinding Wheel-6A290V

**GW-11A2-WO-SDC/CBN**  
● Electroplated grinding Wheel-11A2

**GW-11A2-RD-SDC/CBN**  
● Resinoid grinding Wheel-11A2

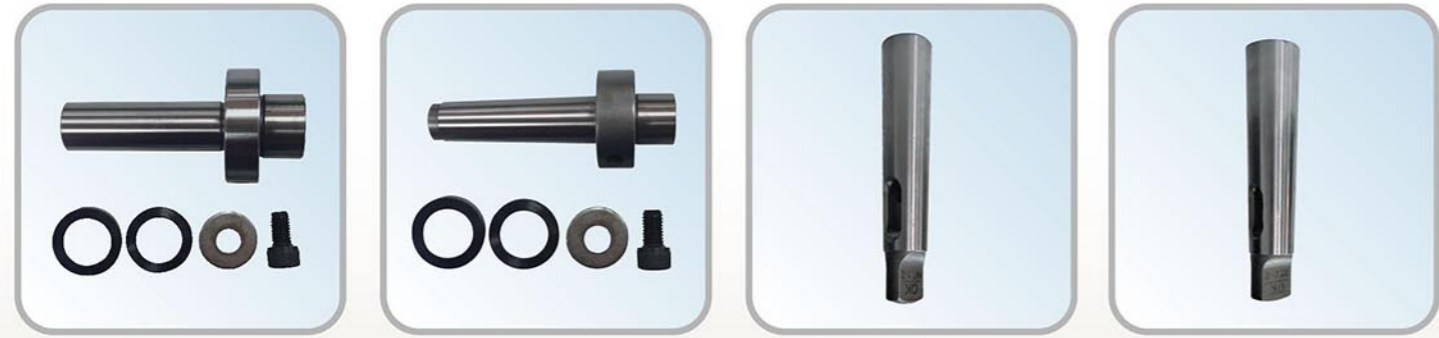


**GW-DR**  
● Diamond dresser

**GWFL**  
● Grinding wheel flange

**GWFL-WR**  
● Flange wrench

**GWFL-SC**  
● Screw for grinding wheel flange



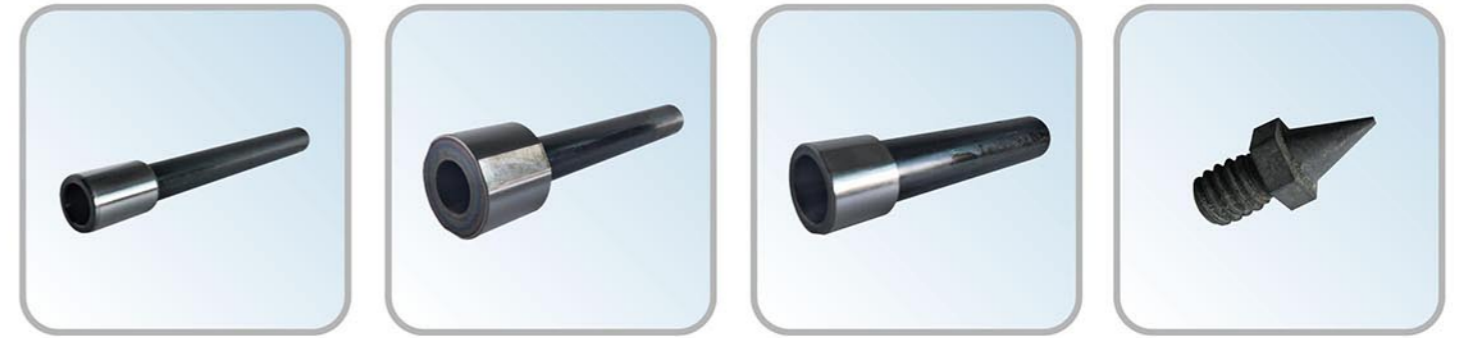
**SHAFT-S**  
● 25.4/31.75 Shaft (Straight shank)

**SHAFT-T**  
● 25.4/31.75 Shaft (Taper shank)

**MOSTP-01**  
● Morse taper sleeve-NO.1

**MOSTP-02**  
● Morse taper sleeve-NO.2

# Accessories for machine



**MOSTP-03**  
● Morse taper sleeve-NO.3

**MOSTP-04**  
● Morse taper sleeve-NO.4

**MOSTP-05**  
● Morse taper sleeve-NO.5

**TL-SCRIP**  
● Screw pin



**CAM-04**  
● Cam-NO.4

**CAM-06**  
● Cam-NO.6

**CAM-08**  
● Cam-NO.8

**CAM-09**  
● Cam-NO.9



**CAM-A2**  
● Cam-NO.A2

**CL-5C**  
● 5C collet (3-25mm)

**CL-5CSP**  
● 5C Special collet (32mm/42mm)

**CL-U2**  
● PP-U2 collet (1, 2, 2.5, 3~10, 12, 16, 18, 20, 25mm) (1/8", 1/4", 5/16", 3/8", 1/2", 5/8")



**CL-ER**  
● ER collet (ER20:1-13mm / ER25:1-16mm / ER40:3-26mm)

**CL-ST**  
● ST collet (ST32)

**CL-STER**  
● ST/ER Straight collet chuck system

**TL-BX**  
● Tools for General Use  
1. Diamond dresser-1 pc  
2. Hexagon key-10 pcs(1set)  
3. Oil bottle-1 pc  
4. Screwdriver-1 pc  
5. Open wrench-1 pc