



XCMG FOR YOUR SUCCESS

Address: No.39 Hanxing Road,Peixian
Economic Development Zone,Xuzhou City,
Jiangsu Province
Tel: 0516-89961177
Web: www.xcmg.com/jmzz/



WECHAT



TikTok



Official website



XUZHOU XCMG PRECISION INDUSTRIAL TECHNOLOGY CO., LTD.

CHINA XUZHOU

CONTENTS



Corporate profile	03-06
Technology research and development	07-10
Representative products	11-24
Cooperative customers	25-26
Manufacturing capacity	27-40
Quality assurance	41-44
Intelligent manufacturing	45-46
Green environmental protection	47-48
Social responsibility	49-50

Corporate Profile

XCMG

Founded in 1993, and listed at Shenzhen Stock Exchange in 1996 under stock code 000425, Xuzhou Construction Machinery Group Co., Ltd. (XCMG) is a 100-billion leading enterprise with global competitiveness and influence in construction machinery industry and represents an iconic brand of equipment manufacture sector. XCMG has been ranked as the 3rd in the KHL Top 50 construction machinery manufacturers for two successive years and the first in China, ranked 395th in Top 500 by World Brand Lab for 3 successive years, with brand value of RMB 103.587 billion Yuan.

The Company can be traced back to Huaxing Iron Factory, its predecessor founded in 1943, which successfully developed the first truck crane and road roller of the New China and commenced the history of exporting in batches construction machinery made in China. Now its products are exported to more than 190 countries and regions, with a total accumulated sales of more than 1.3 million sets of construction machinery.

The Company has more than 9,000 valid authorized patents, 2,200 invention patents, more than 160 international patents, and has won 5 national Science and Technology Progress awards, with products including traditional backbone industries such as earthmoving machinery, lifting machinery, piling machinery, concrete machinery and pavement machinery, as well as strategic emerging industries such as mining machinery, work-at-height platforms, environmental industry, agricultural machinery, port machinery, rescue and protection equipment, maintenance machinery and information industry. Its complete set of lifting machinery, road machinery, piling machinery and concrete machinery are ranked the top three in the world. The Company enjoys the largest domestic market share in terms of more than 10 core mainframes and 3 categories of key basic parts and components.



XCMG Precision

Xuzhou XCMG Precision Industrial Technology Co., Ltd. (referred to as XCMG Precision) is a wholly-owned subsidiary of XCMG Construction Machinery Co., Ltd. (referred to as XCMG Machinery). Located in Xuzhou, China, the Company covers an area of 500 Mu, with a total investment of RMB 1.5 billion Yuan. It is divided into two industrial sectors: cast iron and cast steel. The cast iron sector has three modeling lines: HWS hydrostatic line, DISA vertical line and SINTO horizontal line, and over 400 sets of equipment including automatic three-dimensional warehouses, hydraulic valve cavity cleaning robots for automatic intelligent processing production line. It has a total annual capacity of 150,000 tons, including 100,000 tons of cast iron and 50,000 tons of cast steel.

By keeping to the product concepts of durable and handcraft-like products with advanced technology, the Company builds its leading advantages in high-end products such as hydraulic multi-way valves, cylinder blocks and cylinder covers and has established supporting cooperation with more than a dozen outstanding enterprises at home and abroad. With more than 600 kinds of products developed, it forms its product lines of five sectors: hydraulic, engines, construction machinery, wind power and trucks, covering gray cast iron, nodular cast iron, vermicular cast iron and other full-brand cast iron materials and reaching the industry first-class level in terms of multiple varieties, high efficiency, personalized manufacture.

Adhering to XCMG's core values of "undertaking great responsibility, keeping to the great cause for great achievements" and following the industrial positioning of "green, intelligent, high-end and world-class", XCMG Precision keeps to its high-quality and innovative development, and is committed to providing high-quality competitive products and services to global customers.

Core values: Undertaking great responsibility, keeping to the great cause for great achievements

Vision: To become a world-class enterprise trusted by the world, with unique value and creativity!

Mission: To explore engineering technology and offer solutions for global engineering construction and sustainable development!

Product concept: Durable and handcraft-like products with advanced technology



July 20, 2018
Xuzhou XCMG Precision Industrial Technology Co., Ltd. established



December 12, 2019
The first production line, SINTO horizontal de-box line put into production with an annual capacity of 10,000 tons



December 30, 2020
The hydraulic multi-way valve products independently developed by the Company successfully passed bench performance tests for 2 million times

September 2022
The third production line DISA vertical box-less line put into production with an annual capacity of 30,000 tons

2018

2019

2020

2021

2022

June 2018
XCMG Casting Project Team established



November 18, 2018
XCMG Casting Project foundation laid



May 1, 2020
The second production line, HWS hydrostatic line put into operation with an annual capacity of 60,000 tons



April 2021
Successfully passed the IATF16949&ISO9001 Quality Management System certification



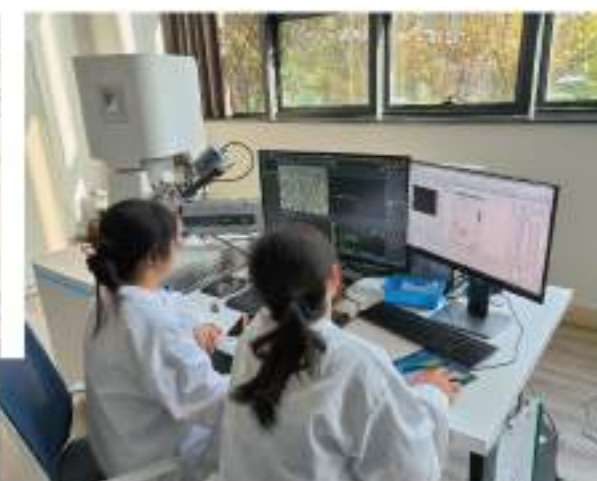
Technology R & D



Relying on XCMG's strong technical strength, driven by leading scientific research resources and strong technical teams, the Company has acquired the key core technologies for high-end parts with high precision and high complexity. The quality of high-end casting products such as hydraulic multi-way valves and cylinder blocks and cylinder covers has reached the international advanced level, showing the mature and stable technical strength.

- 1 XCMG Research Institute
- 2 American Research Center
- 3 European Research Center
- 4 South American Research Center

Technology innovation platforms such as XCMG Central Research Institute, National Key Laboratory of High-End Intelligent Construction Machinery Manufacture, state-level Industrial Design Center and European, American Research Centers, together with scientific research resources such as Shanghai Jiaotong University (XCMG) New Material Research Institute, strongly support the in-depth development of key material problem tackling, leading technology research and development, testing and detection and other technology innovation programs.



Technology R & D



Boasting a technical team of more than 50 members and 6 senior engineers, which consists of an expert group with more than 50 years of rich experience in casting, foreign technology advisors, key technicians capable of independent research, the Company develops the cooperative R&D mechanism jointly with foreign engineers, form its strong technical force in process design, smelting, modeling sand, post-processing, and processing and builds its technical team of echelon and specialization.



It adopts multiple strategies to ensure the casting quality from the design by building CAD/CAM/CAE and other design platforms, applying UG for casting process design, model design, processing programming, applying MAGMA model flow software to assist product development, designing the optimal casting process scheme, using 3D printing technology to rapidly develop and provide product samples, shorten the development cycle.



Representative Products

HYDRAULIC CASTINGS



Swash plate holder

Material: QT600-3
Weight: 4.68 kg
Dimension:
Φ192*59mm



Motor case

Material: QT600-3
Weight: 56kg
Dimension:
330*320.5*237mm



Hydraulic motor valve

Material: QT450-10
Weight: 30.96kg
Dimension:
Φ295*119.5mm



Left rotation lid

Material: QT500-7
Weight: 43.69kg
Dimension:
337.5*282.5*96mm



Pump case

Material: HT300
Weight: 21.05kg
Dimension:
Φ259*178*188mm



Reducer case

Material: QT700-2
Weight: 114.9kg
Dimension:
Φ489*285mm



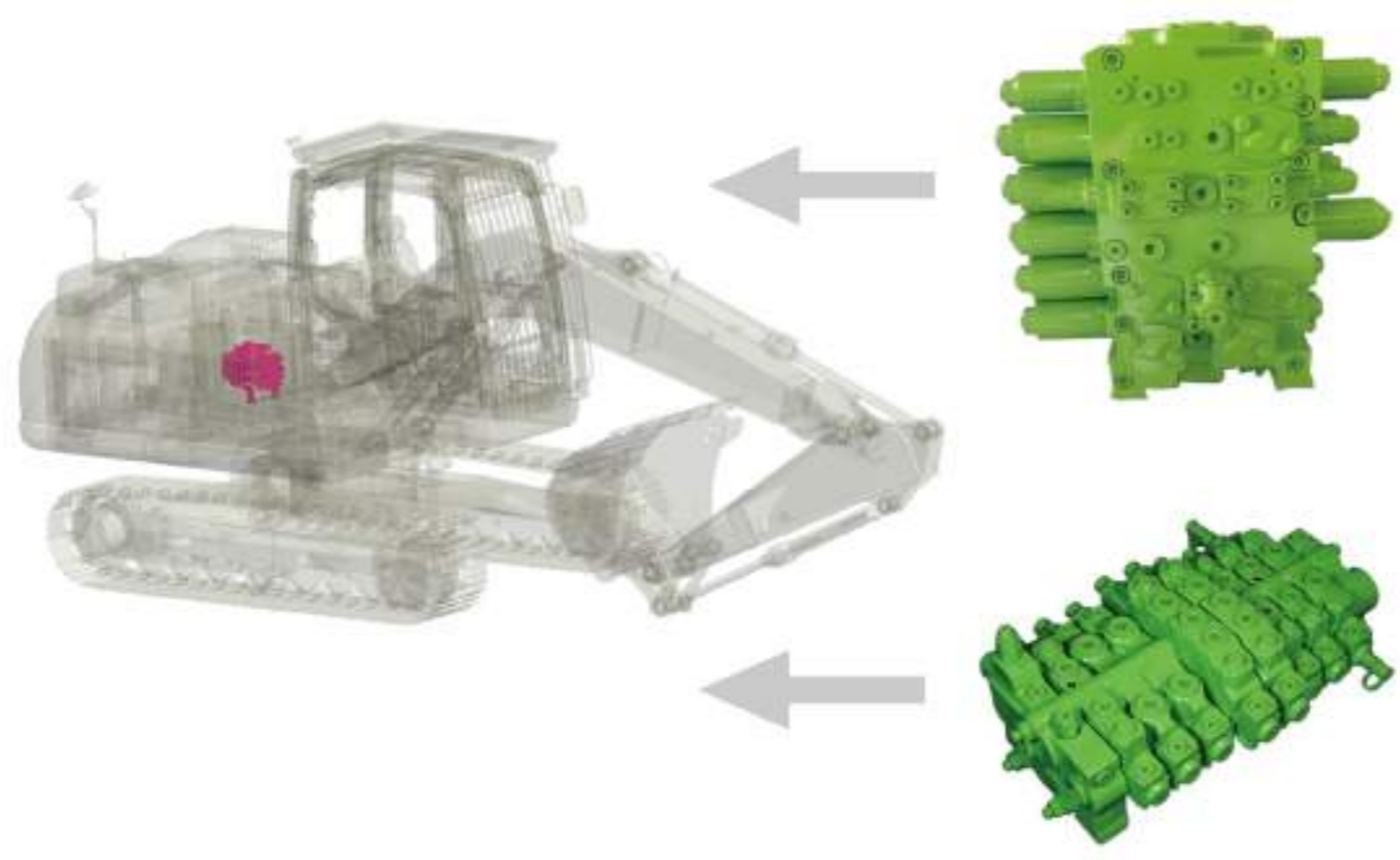
Motor case

Material: QT600-3
Weight: 70.51kg
Dimension:
Φ378*213mm



Swash plate castings

Material: QT600-3
Weight: 7.18kg
Dimension:
226*182*118mm



Hydraulic multi-way valves
Material: QT500-7
Weight: 105.8kg
Dimension: 429*263*158mm



Work bench rough casting
Material: HT300
Weight: 6.3kg
Dimension: 189*129*54mm



Feeding bench rough casting
Material: HT300
Weight: 7.9kg
Dimension: 201*160*60mm

Representative Products

ENGINE CASTINGS



Cylinder cover

Material: HT250
Weight: 55.5kg
Dimension: 556*2578*121mm



Cylinder block

Material: HT250
Weight: 35.5kg
Dimension: 396*474*198mm



Cylinder cover

Material: HT300
Weight: 263kg
Dimension: 1058*389*166mm



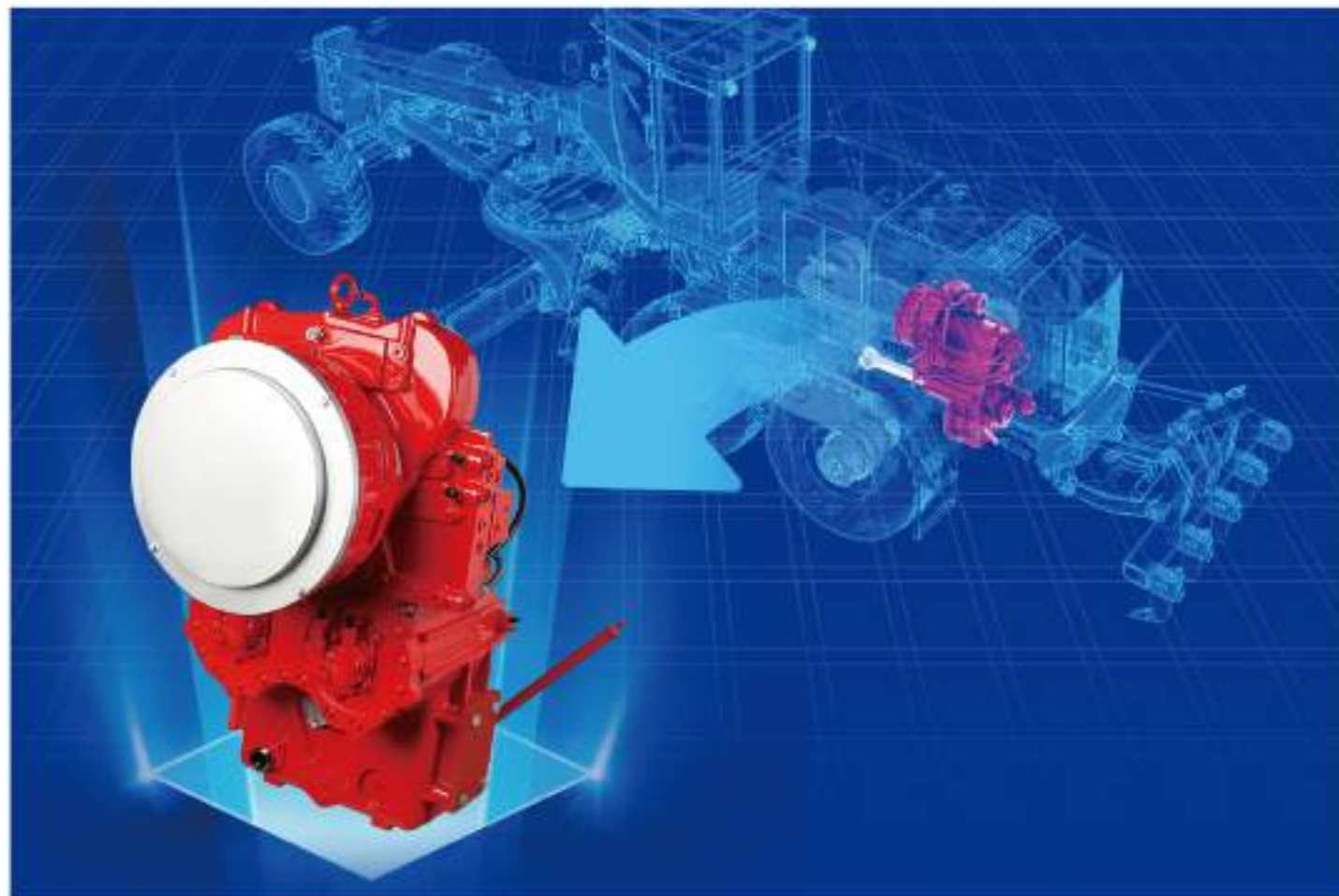
Representative Products

CONSTRUCTION MACHINERY CASTINGS



Gear box casting

Material: HT250
Weight: 295.4kg
Dimension: 1033*591*599mm




Torque converter case

Material: HT250
Weight: 145kg
Dimension: 820*621*352mm



Control valve body

Material: HT250
Weight: 24kg
Dimension: 334*207*118mm



Oil distribution flange

Material: QT500-7
Weight: 15kg
Dimension: $\Phi 300 \times 190$ mm



Working pump case

Material: HT250
Weight: 18.6kg
Dimension: $\Phi 240 \times 100$ mm

Representative Products

CONSTRUCTION MACHINERY CASTINGS



Main reducing case

Material: QT450-10
 Weight: 88.2kg
 Dimension: $\Phi 500 \times 295$ mm



Planetary reducing case

Material: QT450-10
 Weight: 143.88kg
 Dimension: $\Phi 495 \times 536$ mm



Wheel hub

Material: QT450-10
 Weight: 97kg
 Dimension: $\Phi 538 \times 312$ mm



Differential carrier

Material: QT450-10
 Weight: 24.21kg
 Dimension: $\Phi 321 \times 180$ mm



Planetary wheel carrier

Material: QT450-10
 Weight: 71.69kg
 Dimension: $\Phi 538 \times 170$ mm

Representative Products

CONSTRUCTION MACHINERY CASTINGS

Floating seal seat

Material: QT450-10
Weight: 7.01kg
Dimension:
144.5*128.5*93mm



Outer cover

Material: QT450-10
Weight: 2kg
Dimension:
Ø134*30.5mm



Outer axial seat

Material: QT450-10
Weight: 4kg
Dimension:
140.6*80*127mm



Outer axial seat

Material: QT450-10
Weight: 11.53kg
Dimension:
187*150*106mm



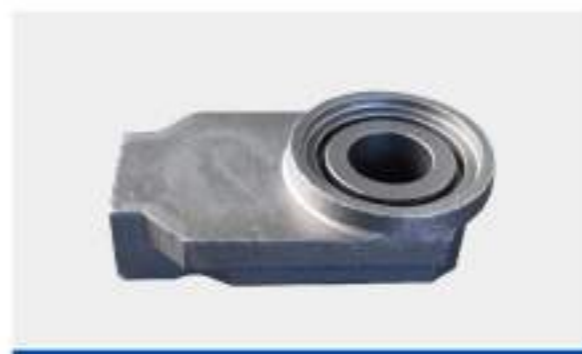
Inner axial seat

Material: QT450-10
Weight: 1.4kg
Dimension:
92*88*52mm



Outer axial seat

Material: QT450-10
Weight: 10.24kg
Dimension:
360*145*76mm



Inner axial seat
Material: QT450-10
Weight: 23.1kg
Dimension: 345*190*110mm



Axial seat
Material: QT450-10
Weight: 19.1kg
Dimension: 343*186*116.9mm

Representative Products

WIND POWER CASTINGS



Supporting seat

Material: QT400-18AL
 Weight: 564kg
 Dimension:
 630*570*330mm



Input stacker case

Material: QT400-18
 Weight: 496.7kg
 Dimension:
 Φ794*686mm



Spline shaft cover

Material: HT250
 Weight: 107kg
 Dimension:
 1024*600*107mm



High-speed shaft cover

Material: HT250
 Weight: 120kg
 Dimension:
 903*487*103mm



Tube shaft cover

Material: HT250
 Weight: 8.6kg
 Dimension:
 300*300*100mm



Planet carrier

Material: QT500-7
 Weight: 26kg
 Dimension:
 Φ280*237mm



Lower case

Material: QT400-18AL
 Weight: 181kg
 Dimension:
 Φ495*368.2mm



Flange

Material: QT400-18AL
 Weight: 28.84kg
 Dimension:
 Φ313*130mm



Representative Products

AUTOMOTIVE CASTINGS



Plate spring bracket

Material: QT
Weight: 30kg
Dimension: 500*400*300mm



Front girder bracket

Material: QT
Weight: 50kg
Dimension: 800*600*350mm

Control arm

Material: QT
Weight: 7.01kg
Dimension: 800*600*350mm



Generator bracket

Material: QT
Weight: 2kg
Dimension: 350*200*150mm



Front girder bracket

Material: QT
Weight: 5kg
Dimension: 800*600*350mm



Motor bracket

Material: QT
Weight: 1.6kg
Dimension: 250*150*100mm



Torsion shaft bracket

Material: QT600-3
Weight: 2kg
Dimension: 134*116*93mm



Differential case

Material: QT600-10
Weight: 3.6kg
Dimension: Φ151*150mm



Cooperative Customers



Kawasaki Precision Machinery (Suzhou) Ltd.



Beijing Huade Hydraulic Industrial Group



Yantai Eddie Precision Machinery Co., Ltd.



Norca (Tianjin) Machinery Co., Ltd.



Nanfang Pump Industry Co., Ltd.



China National Heavy Duty Truck Group Co., Ltd.



Anhui Haery Aviation Power Co., Ltd.



Yantai Jereh Power-Tech Co., Ltd.



SEW-Industrial Reducer (Tianjin) Co., Ltd.



Nanjing High Speed Gear Manufacturing Co., Ltd.



Envision Energy Co. Ltd.



Northern Tomson Transmission Technology Co., Ltd.



Linamar Automotive Systems (Wuxi) Co., Ltd.



Fiat Auto Company



Nanjing Iveco Automobile Co., Ltd.

Manufacturing Capacity

SMELTING

1 3 4 5

American Inductotherm medium-frequency induction furnace

American inductotherm medium-frequency induction furnace 10 tons * 4
 American inductotherm medium-frequency induction furnace 6 tons * 5
 American inductotherm medium-frequency induction furnace 3 tons * 4

2

Automatic feeding and batching system

Automatic operation, automatic positioning, automatic intake, automatic discharge, Real-time data transmission
 Ensure the ratio of liquid iron proportion and melting accuracy



Manufacturing Capacity

CORE MAKING



HOT CORE MACHINE



COLD CORE MACHINE



Three-dimensional storage and delivery

Constant temperature and humidity, intelligent operation, first-in first-out; Bar code technology, tracking flow direction, account and physical synchronization



Manufacturing Capacity

CORE MAKING

Core assembly

The standard assembly operation of more than 10,000 ensures that each component of the sand core perfectly meets the design requirements after assembly



Dip coating robots

Baume degrees, dip coating depth, overcoating time, tilt angles adopted for sand core in the standardized painting ensures the quality of overcoating of sand cores

Surface dry furnace



Manufacturing Capacity

MODELING

- 2
- 3
- 4

HWS EFA-SD 6.5 hydrostatic molding line

Production efficiency: 80 sets per hour

Main material: full-brand gray cast iron, vermicular cast iron, nodular cast iron

Sand box size: 1450*1100*420/420

Production capacity: 60,000 tons per year

Main products: hydraulic multi-way valves, cylinder blocks, cylinder covers, gear cases, motor cases, reducer cases, planetary reducer cases



Manufacturing Capacity

MODELING

1 3
2 4

SINTOFCMX - II horizontal parting box modeling line

Production efficiency: 200 models per hour

Main material: full-brand gray cast iron, vermicular cast iron, nodular cast iron

Sand box size: 610*508*130/200

Production capacity:

10,000 tons/year

Main products:

shaft seats, guide sleeves, cases of pumps and differentials



Manufacturing Capacity

CLEANING



3 suspended shot blasting machines
Production efficiency: 36 tons per hour



Full-automatic inner cavity shot blasting machine



Axial shuttle shot blasting machine

13 automatic grinding machines



Manufacturing Capacity

PROCESSING

1 Shaft seat automation line

Capacity: 700,000 pieces per year



2 Multiple processing center

Capacity: 1.32 million pieces per year



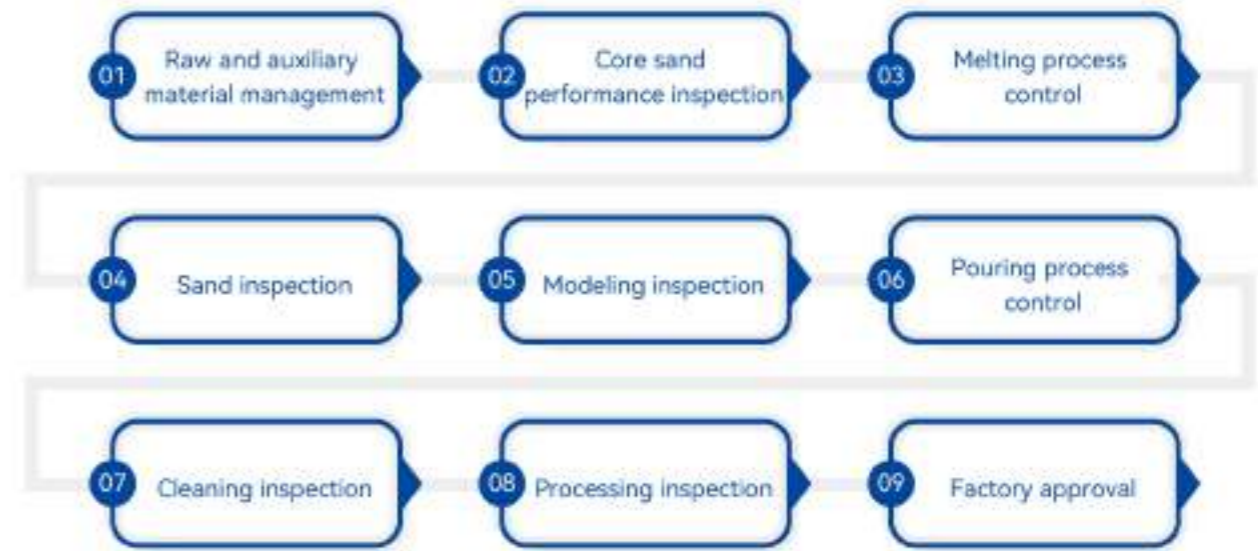
Manufacturing Capacity

QUALITY MANAGEMENT SYSTEM

Keep complying with the highest standard of industry certification in all-round manner
Build IATF16949/ISO9001 quality management system

By keeping to the concept of 'high-end quality originating from design', it makes high-end layout, high standard input, introduces world-class equipment and build its quality control system of "advanced concept, sound system, high-end equipment and efficient management" from the design end to the quality control end. The company has a quality laboratory in place, and set up detection device at each manufacturing process to ensure the product quality at each stage of production and manufacturing and to provide customers with continuous and stable high-quality casting.

INSPECTION PROCESS



Quality Control

QUALITY TESTING EQUIPMENT



Trilinear coordinate measuring instrument (Zeiss)



Trilinear coordinate measuring instrument (Hexagon)



Spark direct reading spectrometer (OBLF)



Universal testing machine (Mester)



High-frequency infrared carbon and sulfur analyzer (Beijing Wanlianda)



Carbon-silicon meter (Sabulance)



Full-automation low-temperature shock tester (Sunstest)



3D scanner (Hexagon)



Metalloscope (Zeiss)



Ultrasonic fault detector (Olympus)



Profilometer (Shaanxi Wale)



Magnetic particle flaw detector (Sheyang, Jiangsu)



Endoscope (Everest)



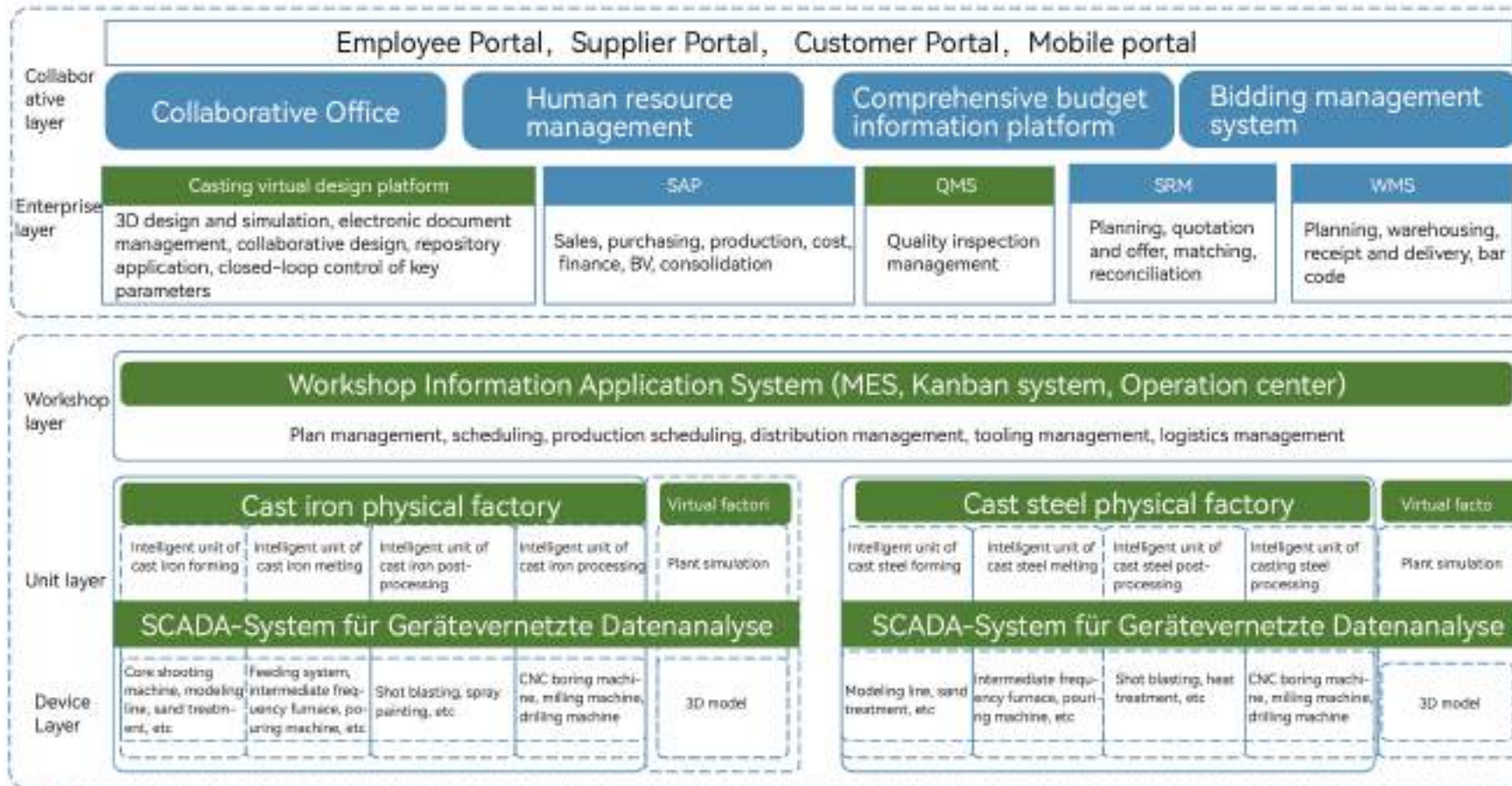
Digital display Brinell hardness tester (Huayin)

Intelligent Manufacturing

By applying advanced intelligent manufacturing technologies and supported by our core-making units, modeling lines, smelting furnaces, robots, top-notch CNC machines, sand core three-dimensional repository and other intelligent equipment, we established four intelligent units in place: smelting, modelling, post-processing, and processing, and through construction of our virtual casting design platform, ERP, MES, intelligent unit and other integrated systems, we realized optimal control, intelligent scheduling, status monitoring, quality tracking and cost analysis, enhanced product quality and production efficiency while reduced production costs to create a world-class green, flexible, efficient, intelligent casting factory.



Intelligent casting factory



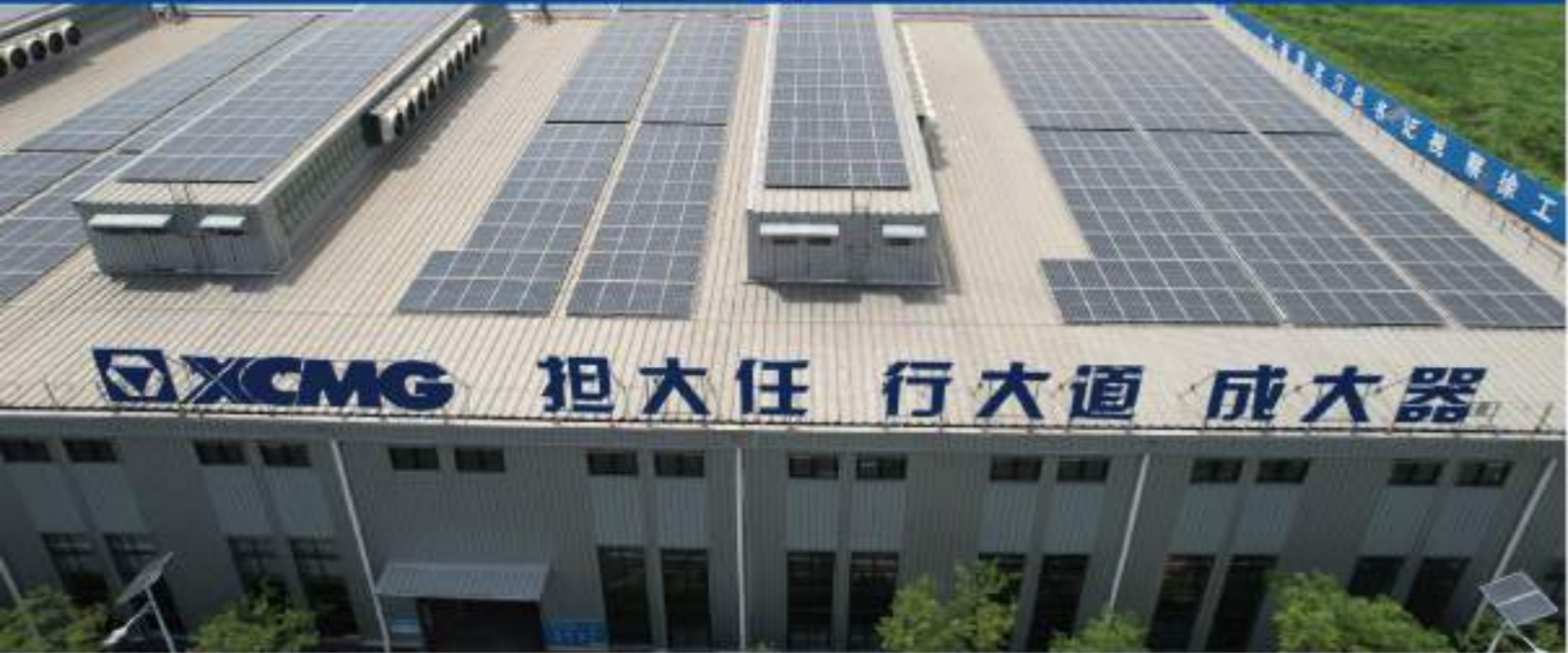
Green Environmental Protection

With advance planning and investment, all plants and facilities are built in accordance with the green plant standards, and we build distributed photovoltaic power stations by making full use of solar energy and resources to intensively use resources to the maximum extent, with installed capacity of 54MWP, annual output of nearly 5 million kilowatt hours, and utilization rate of photovoltaic power generation of 90%.

Advanced zeolite wheel + catalytic combustion waste gas treatment technology are adopted for the spray painting process for low emissions far below the requirements of environmental protection. As for dust, the main pollutant, we put in strict implementation the local comprehensive emission standards of air pollutants, and make commitment to a more stringent emission concentration limit that is below 20mg/ m³.

Solid wastes are subject to closed-loop management and professional treatment in strict accordance with the requirements for environmental protection, and based on their full life cycle system, intelligent management terminals of hazardous wastes are built for control of hazardous wastes in all aspects from generation, storage, transfer to disposal to prevent the pollution of the environment by hazardous wastes

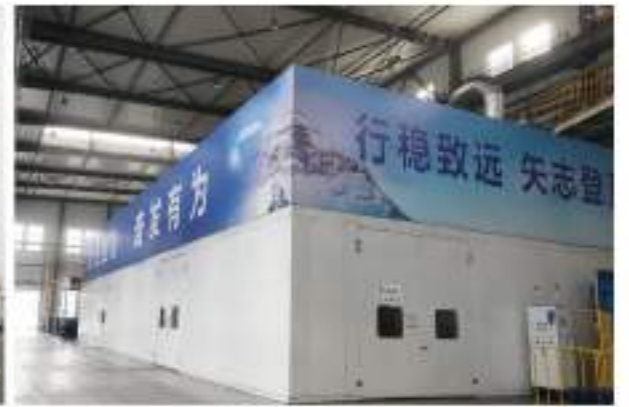
Put in implementation the concept of green development, undertake social and environmental missions, reduce pollution and noise, save energy and reduce carbon



Photovoltaic power generation



VOCs exhaust gas treatment



Soundproof room



Dust removal device



Dust removal device



Dust removal device

Social Responsibility



01 Green health

Considering occupational health, work safety, environmental protection and green development as an important social responsibility throughout its sustainable strategic development, the Company makes every effort to promote the full-employee natural health project, create an everlasting enterprise of intrinsic safety to realize the healthy, harmonious and sustainable development among humans, nature and social environment.



02 Public Welfare Undertakings

We are actively engaged in public welfare such as earthquake relief, education support, poverty alleviation and industrial development, adhering to our public welfare concept of "helping with good things", and passing on the public welfare ideology of "more noble responsibility and undertaking, more humanistic respect and care, more lasting innovation and creation, and more delicate daily good deed".



03 Customer service

We strive to create the core competitive advantage of differentiation, focusing on the customer, integrating R&D, manufacturing and service resources, creating value for customers and helping customers succeed with the compound ability of reliable quality, leading technology, environmental protection and high efficiency.



04 Staff Development

Staff comes before XCMG development. With the various colors and diversities, XCMG is the ladder of growth, a warm home, the soul harbor for common growth with employees.



Noble feelings of feeding back the society and the great ambition of benefiting mankind has been carried forward all the way for over 80 years of history in XCMG.