

## Installed explanations of Decoder For DesignJet HP Z3100

### 1. Installation of the right decoder card

1-1. Open the cover of the right ink clip, take out the ink cartridge, and get out the screw (within the red circle)



1-2. Take down the front baffle and then take out the screw( within the red circle)



1-3. take out the screw( within the red circle)



1-4 take out the screw( within the red circle)



1-5. take out the screw( within the red circle)。



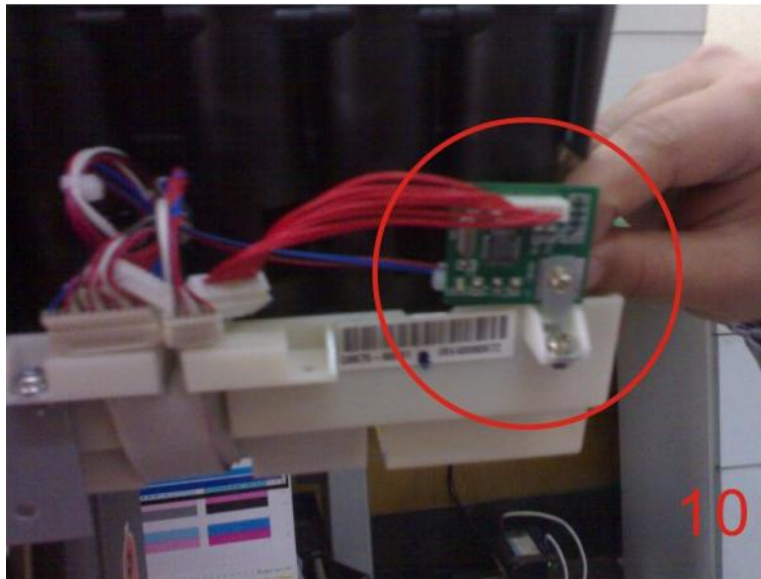
1-6. Take out the printing cover( according the direction of the arrow)



1-7. Find out the socket (within the red circle)



1-8. Pull out the upside of the socket (within the circle)



2. The installation of the left Decoder card

2-1. take out the screw(within the red circle)



2-2. take out the screw(within the red circle)



2-3. Thirdly, take out the cover plate (within the red circle)



2-3-1. Opening cover upside of the left ink clip before taking out the cover plate, and then press down the bayonet ( within the red circle)



2-4. take down the cover plate ( within the red circle)



2-5. Take down the screw and spring (within the red circle)



2-6. Take out the handle of formfeed



2-7. Take out the printing card (within the red circle)





2-8 Take out the printing card (within the red circle)



2-9. Take down the shelf of the printing card (within the red circle)



2-10. Take down the shelf of the printing card (within the red circle)



2-11. Take down the shelf of the printing card



2-12. Open the cover upside of the left ink clip, take out all the ink box, and get out the screw and the shelf (within the redcircle)



2-13. Take out the shelf (within the red circle)



2-14. Take out the screw under the formfeed



2-15. Take out the front baffle of the machine, take out the screw ( in the red circle)



2-16. take out the screw ( in the red circle)



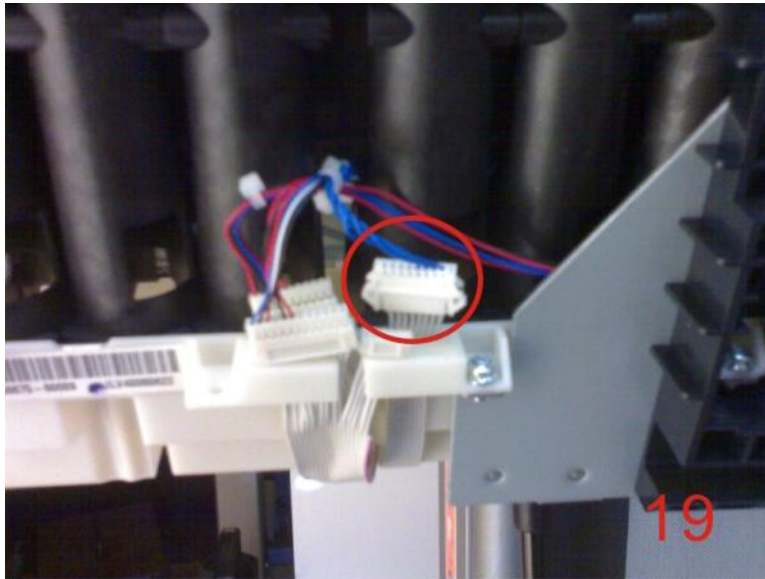
2-17. take out the screw ( in the red circle)



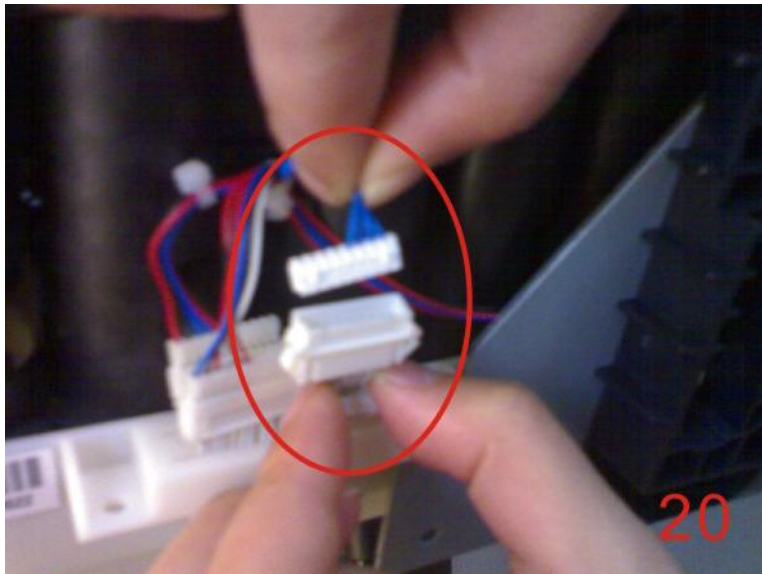
2-18. Take out the printing cover ( according the direction of the arrow)



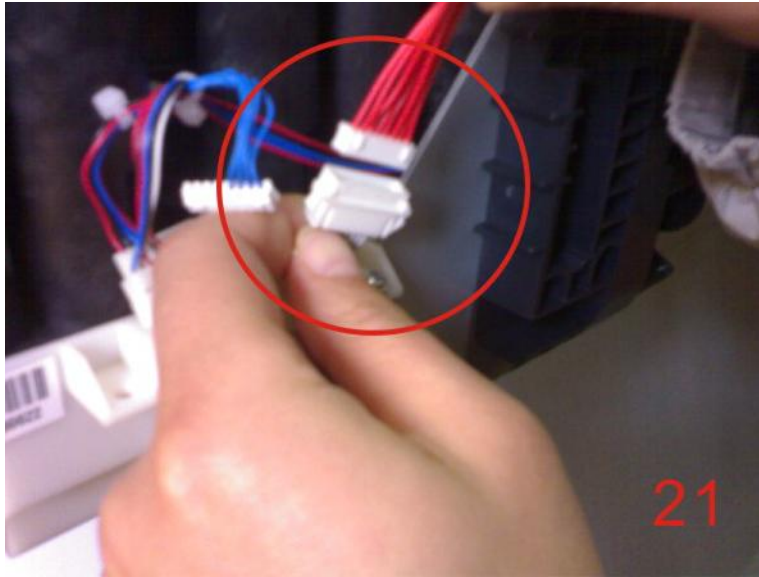
2-19. Find out the outlet (in the red circle)



2-20. pull out the upside of the outlet in the red circle (be careful)



2-21. Plug in the flat cable of the decoder



2-22. Fixing the decoder by shelf

