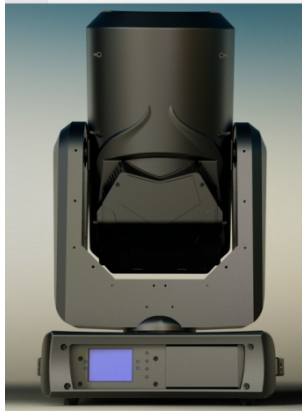




Water-proof 350W Beam+Spot+Wash(3IN1)



Model: YR-IP350

User Manual

Please read these instructions carefully before use

Contents

Section 1. Getting Started

- ✧ Unpacking
- ✧ Safety Instruction

Section 2. Set Up

- ✧ Installation
- ✧ Controlling Board
- ✧ Machine Connection

Section 3. Troubleshooting

- ✧ Troubleshooting

Section 4. Reference

- ✧ DMX Protocol
- ✧ Specification

Specification:

Voltage: AC110V-240V

Frequency: 50/60Hz

Power Consumption: 450W

Halogen lamp: 17R 350W

Scan: Pan 540°, Tilt 260°, photoelectric reset and correction

Shutter: 1-13t/s mechanical control and speed adjustable.

Color Temperature: 8000K

Water-proof grade: IP55

Control: DMX512

Channel: 16ch /20ch switchable

Control Mode: DMX/sound active/auto

Fixed Gobo wheel: 14+open, electric focus and zoom

Rotated gobo wheel: 9+ open, electric focus and zoom

Color wheel: 14+open, rainbow effect

Effect wheel: 16 facet prism + 6 facet linear prism

Beam angle: 3.8°~45° liner adjusted

Thermal protection: Automatically cut off the power when over heat.

Physical Parameters:

Machine size: 433.5*396.8*722.5mm

Machine weight: 27.6kg

Carton packing size: 57*52*72cm

Packing weight: 32.1kg

✧ Safety Instruction

Unpacking

- 1pc fixture(lamp installed)
- 1pc User Manual
- 1pc Power Cable
- 1pc Signal Cable
- 2pc Fast-lock Omega Clamp (1/4 turn)

Thanks for using our YR-IP350 moving beam. Carefully unpack the box and check the contents to ensure that all parts are present and in good conditions. If anything damaged during transit, notify the shipper immediately and keep the packing material for inspection. Again, please save the carton and all packing materials. If the fixture must be returned to manufacturer, it is important that the fixture be returned in the original manufacturer box and packing.

Section 1. Getting Started

✧ Unpacking



Safety Instruction

For your safe, please read this user manual carefully before turn on the fixture. This machine should be operated by qualified engineer!

- Please conserve this manual as operation guidance. If you sell this product to other user, please make sure that they also receive this user manual.
- Always make sure that you are connecting to the proper voltage and the line voltage not higher than stated on the decal or rear panel of the fixture.
- To prevent risk of fire or shock. Make sure there are no flammable, explosive or corrosive materials surrounded in 10/*-meters while operating.
- The unit must be installed in a location with adequate ventilation, at least 5m away from adjacent surfaces. Be sure that no ventilation slots are blocked.
- Fixture may carry high heat, do not aim at objective exceeding 2 minutes.
- Safe wire should be used to install machine. Bearing of safe wire should be 3 times of the machine weight.
- Always disconnect from the power source before servicing or replacing fuse/lamp and be sure to replace with same fuse/lamp size and type. Cut off power before moving, repairing and cleaning the machine.

- To avoid electric shock, all fixtures must be connected to circuits with a suitable ground.
- Always secure fixture using a safety chain and carrying handles. Never carry the fixture by its cord.
- Do not operate at ambient temperatures higher than 104°F(40°C).
- In case of failure or malfunction occurred, stop using the unit immediately. Never try to repair the unit by yourself. Repairs carried out by unskilled people can lead to damage or malfunction. Please contact the nearest authorized technical assistance center. Buy the same spare parts/components from manufacturer directly.
- Make sure the power cord is never crimped or damaged.
- Avoid direct eye exposure to the light source while it is on.
- Do not power on and power off the fixture in a short time.
- When use DMX controller, please make sure that there is no interference sources (e.g. intercom, high frequency radio waves and radiation source).

9	Gobo self-rotation	000~127 0°~400° positioning 128~191 forward flow, fast to slow 192~255 reverse flow, slow to fast
10	Prism 1	000-127 prism stop 128-255 prism running
11	Prism 2	000-127 prism stop 128-255 prism running

12	Prism rotation	0°~400° positioning 128~191 forward flow, fast to slow 192~255 reverse flow, slow to fast
13	Frost	000-255 0~100% frost
14	Focus	000-255 0~100% focus
15	Zoom	000-255 3.8°-45°
16	Function	000~029 no function 030~050 stay above 5 second, lamp stay on low power 049~059 no function 060~080 stay above 5 second, lamp stay on full power 081~099 no function 100~105 Lamp off 106~119 no function 120~129 light off when color switch 130~139 light off when gobo switch 140~149 no function 150~159 light off when Color, gobo, switch

		160~199 no function 200~205 Lamp on 204~139 no function 240~255 Reset
8	Rotation gobo	000~009 open 010~019 Gobo 1 020~029 Gobo 2 030~039 Gobo 3 040~049 Gobo 4 050~059 Gobo 5 060~069 Gobo 6 070~079 Gobo 7 080~089 Gobo 8 090~099 Gobo 9 shaking from slow to fast 100~110 Gobo 1 shaking 111~121 Gobo 2 shaking 122~132 Gobo 3 shaking 133~143 Gobo 4 shaking

	144~154 Gobo 5 shaking
	155~165 Gobo 6 shaking
	166~176 Gobo 7 shaking
	177~187 Gobo 8 shaking
	188~199 Gobo 9 shaking
	200~201 open
	202~227 forward flow, fast to slow
	228~229 stop
	230~255 reverse flow, slow to fast

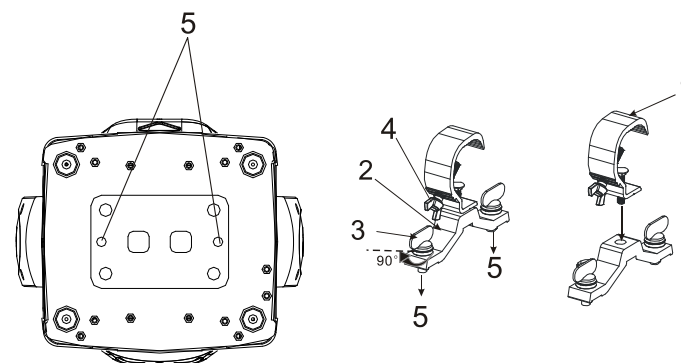
the responsibility.

Section 2. Set Up

- ✧ Installation
- ✧ Controlling Board
- ✧ Machine connection

Installation

- This machine should be mounted through the screw holes of truss. Safety wire is a must to fix fixture well. Make sure truss and safety wire have strong load capacity to bear 3 times weight than fixture at least.
- This machine should be installed by qualified technician.

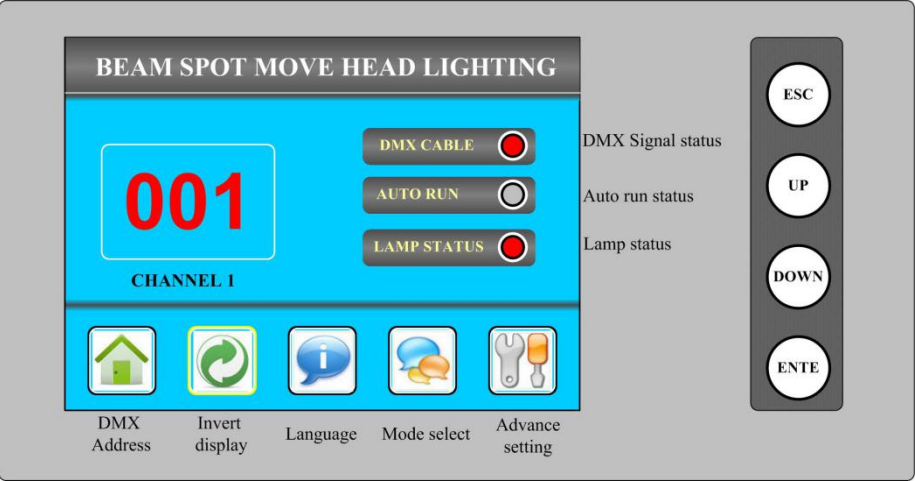


Caution!

There are no user serviceable parts inside the unit. Do not open the housing or attempt any repairs yourself. If exceptional problem happen, please contact related after-sale department or manufacturer.

Any damage that caused by violating this manual is out of insurance, our company will not take

Controlling Board



Address		
WorkMode		
Display		001
Test		
Advance		
Status		
Escape		

Address	DMX Ctrl	✓
WorkMode	Auto Run	
Display	Sound Ctrl	
Test	M/S choose	OFF
Advance	Lamp On	OFF
Status	Channel Mode	sample
Escape		

Address	Langudge	中文
WorkMode	Screen saver	mode 1
Display	Screen rotation	OFF
Test	Touch Enable	ON
Advance	Touch adjust	
Status		
Escape		

Address	PAN	000
WorkMode	TILT	000
Display	FOCUS	000
Test	COLOR	000
Advance	GOBO	000
Status	PRISM	000
Escape	FROST	000
	STROBE	000

Address	PAN Insert	OFF
WorkMode	TILT Inset	OFF
Display	Rectify Enable	ON
Test	PAN Offset	008
Advance	TILT Offset	020
Status	Lamp on when	pwr on
Escape	Factory Setting	

Address	Work Mode	DMX ...
WrokMode	Address	001
Display	Version	B5R.1.1 16n
Test	Elapse	000H 04M
Advance	TatoI	00000H 04M
Status	DMX Ctrl	SysRst
Escape		

7	Fixed Gobo	000~003 open
		004~009 Gobo 1
		010~015 Gobo 2
		016~021 Gobo 3
		022~027 Gobo 4
		028~033 Gobo 5

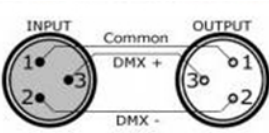
	034~039 Gobo 6
	040~045 Gobo 7
	046~051 Gobo 8
	052~057 Gobo 9
	058~063 Gobo 10
	064~069 Gobo 11
	070~075 Gobo 12
	076~081 Gobo 13
	082~087 open
	shaking from slow to fast
	088~095 Gobo 1 shaking
	096~103 Gobo 2 shaking
	104~111 Gobo 3 shaking
	112~119 Gobo 4 shaking
	120~127 Gobo 5 shaking
	128~135 Gobo 6 shaking
	136~143 Gobo 7 shaking
	144~151 Gobo 8 shaking
	152~167 Gobo 9 shaking
	168~175 Gobo 10 shaking

		176~183 Gobo 11 shaking 184~191 Gobo 12 shaking 192~199 Gobo 13 shaking 200~201 open 202~227 forward flow, fast to slow 228~229 stop 230~255 reverse flow, slow to fast
	4	Shutter 001~031 Light off 032~063 Light on 064~095 strobe from slow to fast 096~127 Light on 128~159 free strobe, from slow to fast 160~191 Light on 192~250 skip strobe, from slow to fast 251~255 Light on
	5	Dimmer 000~255 from dark to bright
6	color	000~004 White color 005~009 Color 1 010~014 Color 2

		015~019 Color 3
		020~024 Color 4
		025~029 Color 5
		030~034 Color 6
		035~039 Color 7
		040~044 Color 8
		045~049 Color 9
		050~054 Color 10
		055~059 Color 11
		060~064 Color 12
		065~069 Color 13
		070~189 color liner change
		190~219 forward flow, from fast to slow
		220~224 stop
		225~255 Reverse flow, from slow to fast

Machine Connection

Cables must have a male XLR connector on one end and a female XLR connector on the other end.



A word on termination: DMX is a resilient communication protocol, however errors still occasionally occur. Termination reduces signal errors, and therefore best practices include use of a terminator in all circumstances. If you are experiencing problems with erratic fixture behavior, especially over long signal cable runs, a terminator may help improve performance.



To build your own DMX Terminator: Obtain a 120-ohm, 1/4-watt resistor, and wire it between pins 2&3 of the last fixture. They are also readily available from specialty retailers.

Complimentary signal cable can transmits signals to 20 unit fixtures at most. Signal amplifier is a must to connect more fixtures

Section 3. Troubleshooting

Troubleshooting

Problem	Probable cause(s)	Remedy
No response from fixture when power is applies	No power to fixture	Check power cables
	Primary fuse blown	Replace fuse
	Secondary fuse blown	Replace fuse
Fixture resets but does not respond correctly to controller(DMX mode operation)	Controller not connected	Connect controller
	Incorrect addressing of the fixtures	Check address setting on fixture and controller
	Bad data link	Inspect cables and correct poor connections

	connection	and/or broken cables.
	Conflict between tracking and vector control	Eliminate scene cross-fade on controller
	Data link not terminated	Insert termination plug in output of last fixture
	Defective fixture or 2 devices transmitting on link	Bypass fixtures one at a time until normal operation is regained: unplug both connectors and connect them directly together
Colors cannot be mixed	Random color mixing is on	Turn off random color mixing
Fixture does not reset correctly	Electronic or mechanical failure	Contact service technician
No light, lamp cuts out intermittently, or burns out too quickly	Lamp missing or blown	Disconnect fixture and replace lamp
	Fixture or lamp is too hot	Allow fixture to cool. If problem persists, contact service technician

20	Function	000~029 no function
		030~050 stay above 5 second, lamp stay on low power
		049~059 no function

		060~080 stay above 5 second, lamp stay on full power 081~099 no function 100~105 Lamp off 106~119 no function 120~129 light off when color switch 130~139 light off when gobo switch 140~149 no function 150~159 light off when Color, gobo, switch 160~199 no function 200~205 Lamp on 204~139 no function 240~255 Reset
--	--	--------------------------------------------------------------------------------------------------------------------------------------------------------------------------------------------------------------------------------------------------------------------------------------------------------------------------------------------------------------------------------------------------------------

DMX Protocol 16CH MODE

Channel	Function	Effect
1	Pan scan	000~255 0-540°

2	Tilt scan	000-255 0°-260°
3	Pan/tilt speed	000-255 from fast to slow

		111~121 Gobo 2 shaking 122~132 Gobo 3 shaking 133~143 Gobo 4 shaking 144~154 Gobo 5 shaking 155~165 Gobo 6 shaking 166~176 Gobo 7 shaking 177~187 Gobo 8 shaking 188~199 Gobo 9 shaking 200~201 open 202~227 forward flow, fast to slow 228~229 stop 230~255 reverse flow, slow to fast
11	Gobo rotating	000~127 0°~400° positioning

		128~191 forward flow, fast to slow 192~255 reverse flow, slow to fast
12	Prism 1	000-127 prism stop 128-255 prism running
13	Gradient lens	000-127 Gradient lens stop 128-255 Gradient lens running
14	Prism rotation	000-127: 0°~400° positioning 128~191 forward flow, fast to slow 192~255 reverse flow, slow to fast
15	Frost	000-255 0~100% frost
16	Focus	000-255 0~100% focus
17	Focus bit	000-255
18	Zoom	000-255 3.8°-45°
19	Zoom bit	000-255

Section 4. Reference

- ◇ DMX protocol
- ◇ Specification

DMX Protocol 20CH MODE

Channel	Function	Effect
1	Pan scan	000~255 0-540°
2	Pan bit	000~255 0~2° adjust
3	Tilt scan	000-255 0°-260°
4	Tilt bit	000-255 0~1° adjust
5	Pan/tilt speed	000-255 from fast to slow
6	Shutter	001~031 Light off 032~063 Light on 064~095 strobe from slow to fast 096~127 Light on 128~159 free strobe, from slow to fast 160~191 Light on 192~250 skip strobe, from slow to fast 251~255 Light on
7	Dimmer	000-255 from dark to bright
8	Color	000~004 White color 005~009 Color 1

		010~014 Color 2
		015~019 Color 3
		020~024 Color 4
		025~029 Color 5
		030~034 Color 6
		035~039 Color 7
		040~044 Color 8
		045~049 Color 9
		050~054 Color 10
		055~059 Color 11
		060~064 Color 12
		065~069 Color 13
		070~189 color linear change
		190~219 forward flow, from fast to slow
		220~224 stop
		225~255 reverse flow, from slow to fast
9	Fixed Gobo	000~003 open

		004~009 Gobo 1
		010~015 Gobo 2
		016~021 Gobo 3
		022~027 Gobo 4
		028~033 Gobo 5
		034~039 Gobo 6
		040~045 Gobo 7
		046~051 Gobo 8
		052~057 Gobo 9
		058~063 Gobo 10
		064~069 Gobo 11
		070~075 Gobo 12
		076~081 Gobo 13
		082~087 open
		shaking from slow to fast
		088~095 Gobo 1 shaking
		096~103 Gobo 2 shaking
		104~111 Gobo 3 shaking
		112~119 Gobo 4 shaking

		<p>120~127 Gobo 5 shaking</p> <p>128~135 Gobo 6 shaking</p> <p>136~143 Gobo 7 shaking</p> <p>144~151 Gobo 8 shaking</p> <p>152~167 Gobo 9 shaking</p> <p>168~175 Gobo 10 shaking</p> <p>176~183 Gobo 11 shaking</p> <p>184~191 Gobo 12 shaking</p> <p>192~199 Gobo 13 shaking</p> <p>200~201 open</p> <p>202~227 forward flow, fast to slow</p> <p>228~229 stop</p> <p>230~255 reverse flow, slow to fast</p>
10	Rotating gobo	<p>000~009 open</p> <p>010~019 Gobo 1</p> <p>020~029 Gobo 2</p> <p>030~039 Gobo 3</p> <p>040~049 Gobo 4</p> <p>050~059 Gobo 5</p>

		<p>060~069 Gobo 6</p> <p>070~079 Gobo 7</p> <p>080~089 Gobo 8</p> <p>090~099 Gobo 9</p> <p><i>shaking from slow to fast</i></p> <p>100~110 Gobo 1 shaking</p>
--	--	----------------------------------------------------------------------------------------------------------------------------------------------------------------------