



WASTON 华森
M E D I C A L

PROFESSIONAL
RELIABLE

EXTERNAL FIXATOR

Health is Important

Introduction

Changzhou Waston Medical Appliance Co., Ltd, which is one of China's most dynamic and innovative surgical medical device manufacturers and service providers, was founded in 2002. It consists of five divisions, including the Orthopedics Department, Surgical Stapler Department, Thoracic Surgery Department, Surgical Instruments Department and New Product Development Department. Our company has three R&D and production bases, they are National Changzhou Hi-tech Industry Zone of Jiangsu, National Wujin Hi-tech Industry Zone of Jiangsu, and Science and Technology Center of Changzhou separately.

Waston's Orthopedics Department locates at Wujin National Hi-Tech Industry zone of Jiangsu. Our company covers an area of 100,000 m², with standard factory 50,000 m², purification plant 3,000 m² and R & D center 3,000m². The company has workers with more than senior titles who are responsible for the R&D, manufacture and management accounting for more than 40% of the total number of employees. We have a full set of international advanced equipment such as 5-axis machining centers, slitting machine tools, CNC machine tools and 3D printers. Relying on the Beijing Union Medical College Hospital, Beijing Military General Hospital, Southern Medical University, South China University of Technology, Suzhou University, Changzhou Science & Education Town and other institutions of technical support and close cooperation, the The Watson company has the domestic first-class R & D and processing capacity. In strict implementation of ISO and CMD standard operating, all the products have passed European Union CE certificates of TUV and parts of them have been proved by FDA. With reliable quality, attentive service, WASTON is widely recognized within the industry in the domestic market.

Corporate philosophy: Create by heart, Share of development

Corporate mission and objectives: with rigorous scientific attitude, the concept of continuous innovation and a deep understanding of clinical medicine to research and develop high-quality medical products which fit the clinical and is easy-to-use. It may be waston's greatest happiness to be domestic and foreign customers trusted national brands.

Catalog

I. OF Series External Fixator

1. Mini.....	1
2. Small.....	7
3. Large.....	9

II. SK Series External Fixator

1. Mini.....	21
2. Small.....	24
3. Large.....	30

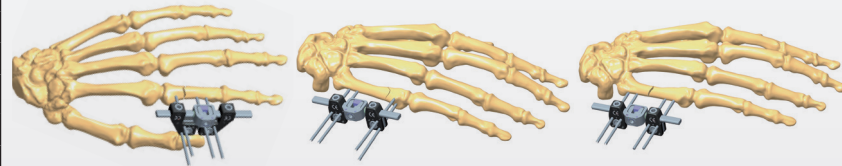
Mini Fixator

Indication : Bone fracture of phalangeal, metacarpal and plantar metatarsal

Description: Screw implanting without using drill bit; According to the clinical needs, mini L-shaped clamp can be used on distal ulnar fracture

Product Code	Specification
17.231.43.001/002/003	Large/Medium/Small
17.231.48.000	Mini L-shaped Clamp

Type	Pin			Material
	Dia(mm)	Total L(mm)	Thread L	
Self-tapping	2.0	50	20	SS
	2.0	60	20	SS
	2.0	70	20	SS
	2.0	80	20	SS



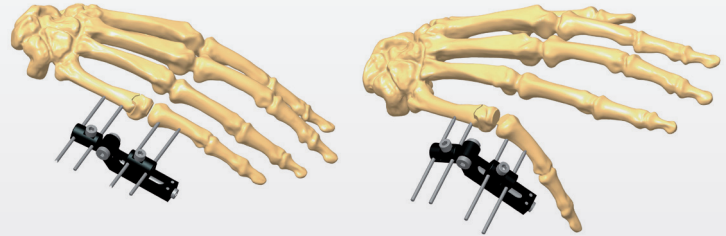
Mini Horizontal Axis Fixator

Indication: Periarticular fracture of phalangeal and metacarpal joint

Description: Screw implanting without using drill bit;
As shown in the picture, the proximal phalanges can do traction to open the joint spacing, and movement is available after operation

Product Code	17.231.45.000
--------------	---------------

Type	Pin Specification			Material
	Dia(mm)	Total L(mm)	Thread L	
Self-tapping	2.0	50	20	SS
	2.0	60	20	SS
	2.0	70	20	SS
	2.0	80	20	SS

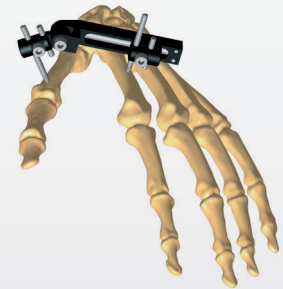
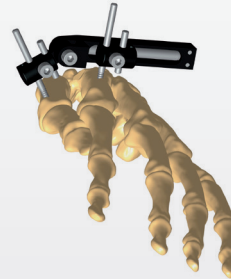


Mini Vertical Axis Fixator

Description: Screw implanting without using drill bit;
Used for treatment of thumb soft tissue spasm

Product Code	17.231.46.000
--------------	---------------

Type	Pin			Material
	Dia(mm)	Total L(mm)	Thread L	
Self-tapping	2.0	50	20	SS
	2.0	60	20	SS
	2.0	70	20	SS
	2.0	80	20	SS



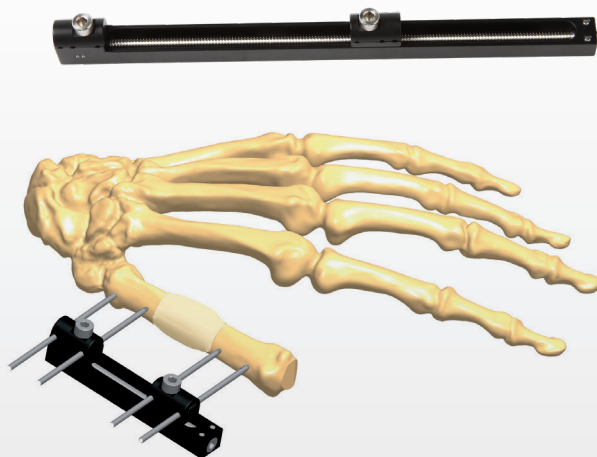
Mini Track Fixator

Indication: Bone nonunion, defect and lengthen

Description: Used for bone lengthen of phalanges, ulna and radius; After fixator installation, cut and lengthen the bone.

Product Code	Specification
17.231.44.001/002/003	Large/Medium/Small
17.201.05.001	T-shape Clamp

Type	Pin			Material
	Dia(mm)	Total L(mm)	Thread L	
Self-tapping	2.0	50	20	SS
	2.0	60	20	SS
	2.0	70	20	SS
	2.0	80	20	SS



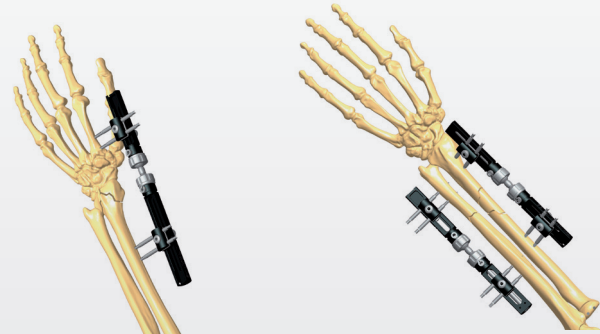
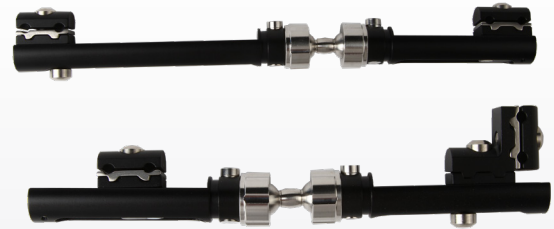
Wrist Joint Fixator

Indication: Periarticular fracture of wrist joint, radio-ulnar joint fracture

Description: Used with 2.0mm drill bit; L-shaped clamp is used according to the needs

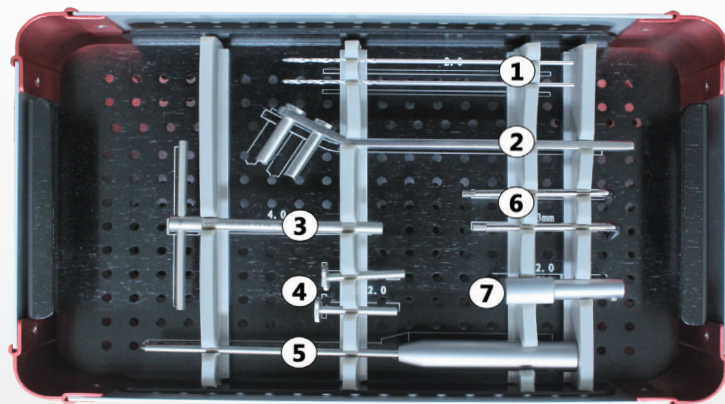
Product Code	Specification
17.231.40.000	Normal type
17.231.41.000	Traction type
17.231.42.000	Radius type

Type	Pin			Material
	Dia(mm)	Total L(mm)	Thread L	
Self-tapping	4.0/2.5	60	20	SS
	4.0/2.5	70	20	SS
	4.0/2.5	80	20	SS
	4.0/2.5	100	30	SS
	4.0/2.5	120	30	SS



External Fixator Instrument Set (Mini Bone)

Instrument Set I (15017111)			
No	Code	Product Name	Qty
1	15057101	Φ2.0 Drill Bit (Used for Φ2.5-3.0 screws)	2
2	15017001	Wrist Fixator Guide	1
3	15017002	Φ4.0 T-shape Screwdriver	1
4	15017004	Φ2.0mm Drill Guide	2
5	15017003	Wrist Soft Tissue Separator	1
6	15017006	3mm Hexagon Screwdriver	2
7	15017005	Φ2.0mm Screwdriver	1
8	15017100	Instrument Case I	1

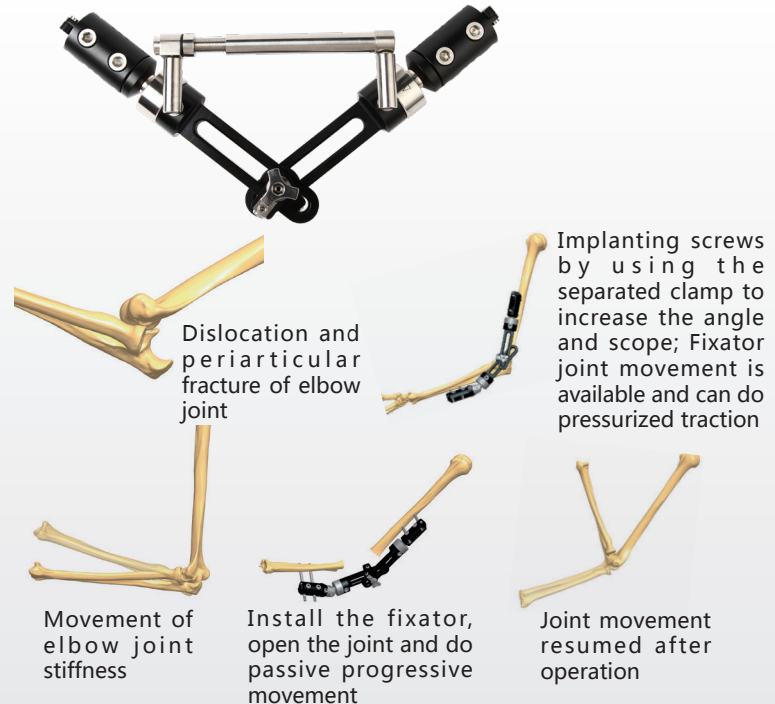


Elbow Joint Fixator

Indication: Periarticular fracture of elbow joint

Description: 6.0/5.0mm screws and 4.8mm drill bit used on humerus; 6.0/4.0mm screws and 3.2mm drill bit used on ulna

Product Code		17.231.32.000		
Type	Pin Specification			Material
	Dia(mm)	Total L(mm)	Thread L	
Self-tapping	6.0/5.0	110	20/30	SS
	6.0/5.0	120	20/30	SS
	6.0/5.0	130	30/40	SS
	6.0/5.0	140	30/40	SS
	6.0/5.0	150	30/40/50	SS
Self-tapping and Self-drilling	6.0/4.0	100	40	SS
	6.0/4.0	110	30/40	SS
	6.0/4.0	120	30/40	SS
Self-tapping and Self-drilling	6.0/5.0	110	20/30/40	SS
	6.0/5.0	120	30/40	SS
	6.0/5.0	130	30/40	SS
	6.0/5.0	140	30/40	SS
	6.0/5.0	150	30/40/50	SS



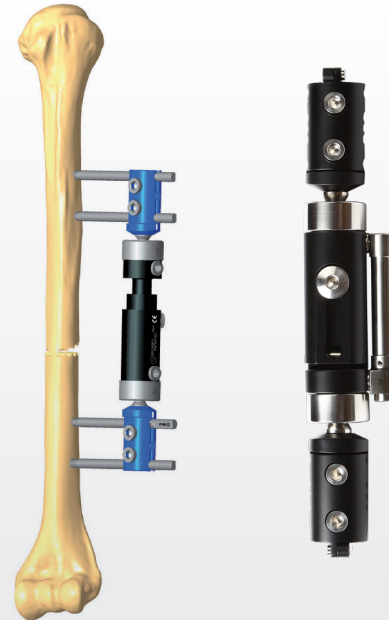
Pediatric Fixator

Indication: Children limbs fracture and adult humeral fracture

Description: Used with 3.2mm drill bit.

Product Code	Specification
17.231.02.000	Standard

Type	Pin			Material
	Dia(mm)	Total L(mm)	Thread L	
Self-tapping and Self-drilling	6.0/4.0	100	40	SS
	6.0/4.0	110	30/40	SS
	6.0/4.0	120	30/40	SS



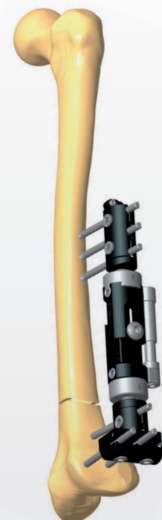
Micro Movement Fixator

Indication: Large bone fracture

Description: Used with 4.8mm drill bit.

Product Code	Specification
17.231.01.001/002/003	Large/Medium/Small (Straight type)
17.231.03.001/002/003	Large/Medium/Small (T type)

Pin				
Type	Specification			Material
	Dia(mm)	Total L(mm)	Thread L	
Self-tapping	6.0/5.0	110	20/30	SS
	6.0/5.0	120	20/30	SS
	6.0/5.0	130	30/40	SS
	6.0/5.0	140	30/40	SS
	6.0/5.0	150	30/40/50	SS
	6.0/5.0	170	50/60	SS
	6.0/5.0	190	50/60/70	SS
Self-tapping and Self-drilling	6.0/5.0	110	20/30/40	SS
	6.0/5.0	120	30/40	SS
	6.0/5.0	130	30/40	SS
	6.0/5.0	140	30/40	SS
	6.0/5.0	150	30/40/50	SS
	6.0/5.0	160	40/50/60	SS
	6.0/5.0	170	40/50/60	SS
	6.0/5.0	180	50/60/70	SS
	6.0/5.0	190	50/60/70	SS



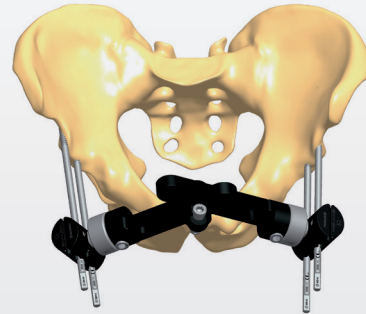
Pelvic Fixator

Indication: Pelvic fracture and dislocation, pelvic anterior ring fracture

Description: Used with 4.8mm drill bit, self-tapping and self-drilling screws

Product Code	Specification
17.231.30.000	Two-chain Type
17.231.31.000	Three-chain Type

Type	Pin			Material
	Dia(mm)	Total L(mm)	Thread L	
Self-tapping	6.0/5.0	130	30/40	SS
	6.0/5.0	140	30/40	SS
	6.0/5.0	150	30/40/50	SS
	6.0/5.0	170	50/60	SS
	6.0/5.0	190	50/60/70	SS
	6.0/5.0	210	50/60/70/80	SS
Self-tapping and Self-drilling	6.0/5.0	150	30/40/50	SS
	6.0/5.0	160	40/50/60	SS
	6.0/5.0	170	40/50/60	SS
	6.0/5.0	180	50/60/70	SS
	6.0/5.0	190	50/60/70	SS
	6.0/5.0	200	60/70/80	SS
	6.0/5.0	210	60/70/80	SS



Intertrochanteric Femoral Fixator

Indication: Intertrochanteric femoral fracture

Description: Used with 4.8mm drill bit

Product Code	Specification
17.231.08.001/002/003	Standard Type
17.231.09.000	Proximal Type

Type	Pin			Material
	Dia(mm)	Total L(mm)	Thread L	
Self-tapping	6.0/5.0	130	30/40	SS
	6.0/5.0	140	30/40	SS
	6.0/5.0	150	30/40/50	SS
	6.0/5.0	170	50/60	SS
	6.0/5.0	190	50/60/70	SS
	6.0/5.0	210	50/60/70/80	SS
Self-tapping and Self-drilling	6.0/5.0	150	30/40/50	SS
	6.0/5.0	160	40/50/60	SS
	6.0/5.0	170	40/50/60	SS
	6.0/5.0	180	50/60/70	SS
	6.0/5.0	190	50/60/70	SS
	6.0/5.0	200	60/70/80	SS
	6.0/5.0	210	60/70/80	SS



Standard Type



Proximal Type

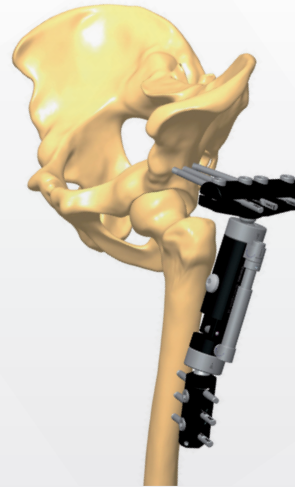
Large T-clamp Micro Movement Fixator

Indication: Periarticular fracture of knee joint, fusion of hip joint

Description: Used with 4.8mm drill bit

Product Code	Specification
17.231.06.001/002/003	Large/Medium/Small

Type	Pin Specification			Material
	Dia(mm)	Total L(mm)	Thread L	
Self-tapping	6.0/5.0	110	20/30	SS
	6.0/5.0	120	20/30	SS
	6.0/5.0	130	30/40	SS
	6.0/5.0	140	30/40	SS
	6.0/5.0	150	30/40/50	SS
	6.0/5.0	170	50/60	SS
Self-tapping and Self-drilling	6.0/5.0	190	50/60/70	SS
	6.0/5.0	110	20/30/40	SS
	6.0/5.0	120	30/40	SS
	6.0/5.0	130	30/40	SS
	6.0/5.0	140	30/40	SS
	6.0/5.0	150	30/40/50	SS
	6.0/5.0	160	40/50/60	SS
	6.0/5.0	170	40/50/60	SS
	6.0/5.0	180	50/60/70	SS
	6.0/5.0	190	50/60/70	SS

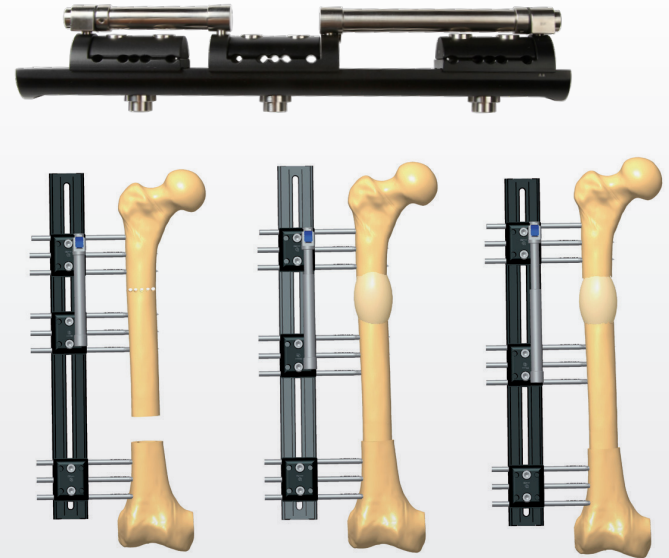


Limb Reconstruction Fixator

Indication: Bone nonunion, lengthen and removal

Description: Used with 4.8mm drill bit

Product Code		Specification		
17.231.10.001/002/003		Large/Medium/Small		
Pin				
Type	Specification			Material
	Dia(mm)	Total L(mm)	Thread L	
Self-tapping	6.0/5.0	130	30/40	SS
	6.0/5.0	140	30/40	SS
	6.0/5.0	150	30/40/50	SS
	6.0/5.0	170	50/60	SS
	6.0/5.0	190	50/60/70	SS
	6.0/5.0	210	50/60/70/80	SS
Self-tapping and Self-drilling	6.0/5.0	130	30/40	SS
	6.0/5.0	140	30/40	SS
	6.0/5.0	150	30/40/50	SS
	6.0/5.0	160	40/50/60	SS
	6.0/5.0	170	40/50/60	SS
	6.0/5.0	180	50/60/70	SS
	6.0/5.0	190	50/60/70	SS
	6.0/5.0	200	60/70/80	SS
	6.0/5.0	200	60/70/80	SS



Ankle Joint Fixator

Indication: Periarticular fracture of ankle joint

Description: Used with 4.8mm drill bit

Product Code	Specification
17.231.07.001/002/003	Large/Medium/Small

Type	Pin			Material
	Dia(mm)	Total L(mm)	Thread L	
Self-tapping	6.0/5.0	110	20/30	SS
	6.0/5.0	120	20/30	SS
	6.0/5.0	130	30/40	SS
	6.0/5.0	140	30/40	SS
	6.0/5.0	150	30/40/50	SS
	6.0/5.0	170	50/60	SS
Self-tapping and Self-drilling	6.0/5.0	110	20/30/40	SS
	6.0/5.0	120	30/40	SS
	6.0/5.0	130	30/40	SS
	6.0/5.0	140	30/40	SS
	6.0/5.0	150	30/40/50	SS
	6.0/5.0	160	40/50/60	SS
	6.0/5.0	170	40/50/60	SS



Semi-ring Combined Fixator

Indication: Plateau fracture of knee joint, distal tibial fracture

Description: Used with 3-4pcs olive head k-wires and 4.8mm drill bit

Product Code	Specification (Ring Dia)
17.232.01.150/175/190/220	150mm/175mm/190mm/220mm
17.232.02.001/002/003	Large/Medium/Small

Pin				
Type	Specification			Material
	Dia(mm)	Total L(mm)	Thread L	
Self-tapping	6.0/5.0	130	30/40	SS
	6.0/5.0	140	30/40	SS
	6.0/5.0	150	30/40/50	SS
	6.0/5.0	170	50/60	SS
	6.0/5.0	190	50/60/70	SS
Self-tapping and Self-drilling	6.0/5.0	130	30/40	SS
	6.0/5.0	140	30/40	SS
	6.0/5.0	150	30/40/50	SS
	6.0/5.0	160	40/50/60	SS
	6.0/5.0	170	40/50/60	SS
	6.0/5.0	180	50/60/70	SS
	6.0/5.0	190	50/60/70	SS
Centering Olive Head K-wire	2	350		SS
Lateral Oliver Head K-wire	2	350		SS

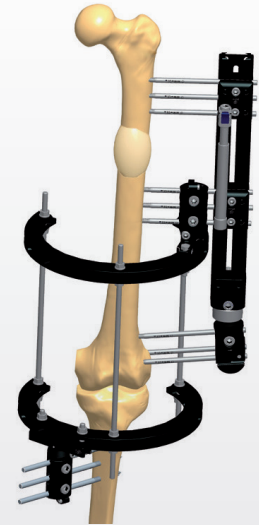


Double-ring Fixator

Indication: Periarticular fracture of knee joint

Description: Used with 4.8mm drill bit, and olive head k-wire is used according to the needs

Product Code		Specification (Ring Dia)		
17.232.03.150/175/190/220		150mm/175mm/190mm/220mm		
Pin				
Type	Specification			Material
	Dia(mm)	Total L(mm)	Thread L	
Self-tapping	6.0/5.0	130	30/40	SS
	6.0/5.0	140	30/40	SS
	6.0/5.0	150	30/40/50	SS
	6.0/5.0	170	50/60	SS
	6.0/5.0	190	50/60/70	SS
	6.0/5.0	210	50/60/70/80	SS
Self-tapping and Self-drilling	6.0/5.0	130	30/40	SS
	6.0/5.0	140	30/40	SS
	6.0/5.0	150	30/40/50	SS
	6.0/5.0	160	40/50/60	SS
	6.0/5.0	170	40/50/60	SS
	6.0/5.0	180	50/60/70	SS
	6.0/5.0	190	50/60/70	SS
	6.0/5.0	200	60/70/80	SS
	6.0/5.0	210	60/70/80	SS
Centering Olive Head K-wire	2	350		SS
Lateral Oliver Head K-wire	2	350		SS



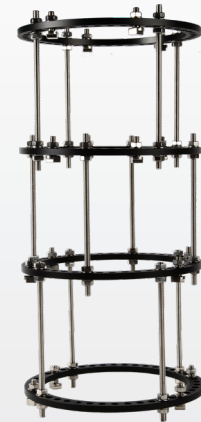
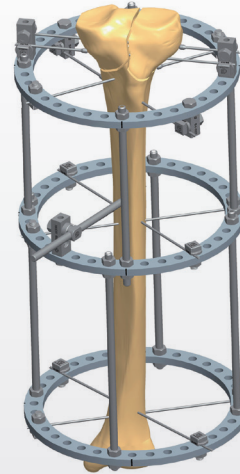
Multi-ring Combined Fixator

Indication: Large bone fracture, limbs lengthen and joint plateau fracture

Description: Used with 4.8mm drill bit, and olive head k-wire is used according to the needs

Product Code	Specification (Ring Dia) (mm)
17.232.06.(100~240)	100/120/130/140/150/ 160/170/180/200/220/240

Type	Pin Specification			Material
	Dia(mm)	Total L(mm)	Thread L	
Self-tapping	6.0/5.0	130	30/40	SS
	6.0/5.0	140	30/40	SS
	6.0/5.0	150	30/40/50	SS
	6.0/5.0	170	50/60	SS
	6.0/5.0	190	50/60/70	SS
Self-tapping and Self-drilling	6.0/5.0	130	30/40	SS
	6.0/5.0	140	30/40	SS
	6.0/5.0	150	30/40/50	SS
	6.0/5.0	160	40/50/60	SS
	6.0/5.0	170	40/50/60	SS
	6.0/5.0	180	50/60/70	SS
	6.0/5.0	190	50/60/70	SS
Centering Olive Head K-wire	2	350		SS
Lateral Oliver Head K-wire	2	350		SS

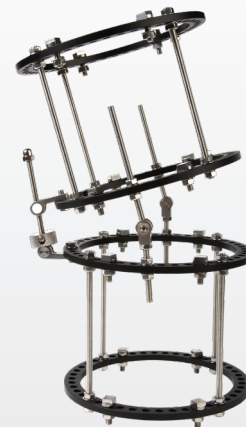
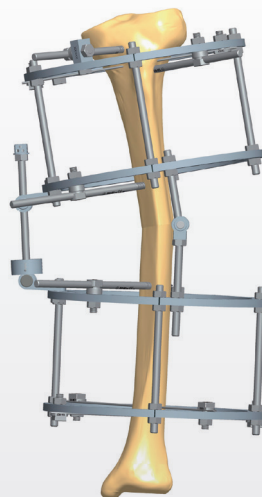


Annular Corrective Fixator

Indication: Large bone deformity correction, periarticular fracture of knee joint

Description: Used with 4.8mm drill bit, and olive head k-wire is used according to the needs

Product Code		Specification (Ring Dia) (mm)		
17.232.06.(100~240)		100/120/130/140/150/ 160/170/180/200/220/240		
Type	Pin			Material
	Dia(mm)	Total L(mm)	Thread L	
Self-tapping	6.0/5.0	130	30/40	SS
	6.0/5.0	140	30/40	SS
	6.0/5.0	150	30/40/50	SS
	6.0/5.0	170	50/60	SS
	6.0/5.0	190	50/60/70	SS
Self-tapping and Self-drilling	6.0/5.0	130	30/40	SS
	6.0/5.0	140	30/40	SS
	6.0/5.0	150	30/40/50	SS
	6.0/5.0	160	40/50/60	SS
	6.0/5.0	170	40/50/60	SS
	6.0/5.0	180	50/60/70	SS
	6.0/5.0	190	50/60/70	SS
Centering Olive Head K-wire	2	350		SS
Lateral Oliver Head K-wire	2	350		SS



Annular Ankle Corrective Fixator

Indication: Correction of equinus, varus and strephexopodia

Description: Used with 4.8mm drill bit, and olive head k-wire is used according to the needs

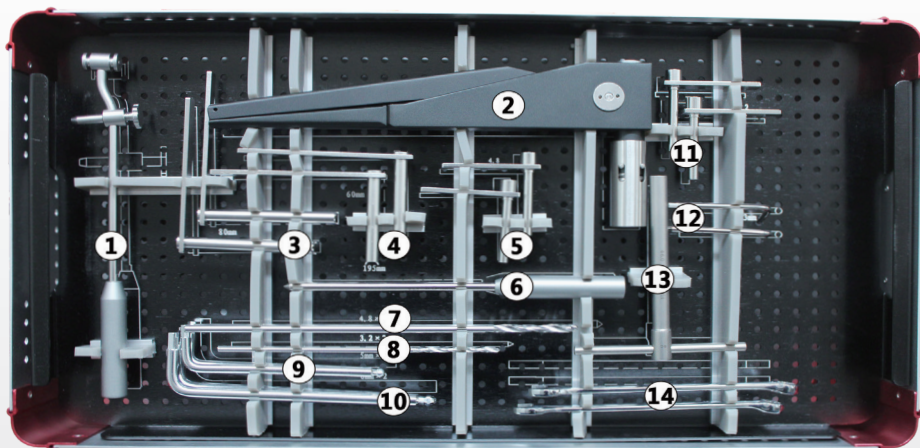
Product Code		Specification (Ring Dia)		
17.232.04.150/170/200		150mm/170mm/200mm		
Pin				
Type	Specification			Material
	Dia(mm)	Total L(mm)	Thread L	
Self-tapping	6.0/5.0	130	30/40	SS
	6.0/5.0	140	30/40	SS
	6.0/5.0	150	30/40/50	SS
	6.0/5.0	170	50/60	SS
	6.0/5.0	190	50/60/70	SS
Self-tapping and Self-drilling	6.0/5.0	130	30/40	SS
	6.0/5.0	140	30/40	SS
	6.0/5.0	150	30/40/50	SS
	6.0/5.0	160	40/50/60	SS
	6.0/5.0	170	40/50/60	SS
	6.0/5.0	180	50/60/70	SS
Centering Olive Head K-wire	2	350		SS
	Lateral Oliver Head K-wire	2	350	



External Fixator Instruments (Small and Large Bone)

Instrument Set III (15017333)

No	Code	Product Name	Qty
1	15017018	K-wire Guide	Selected
2	15017016	2.0 K-wire Puller	Selected
3	15017015	80mm Guide	2
4	15017007	60mm Guide	2
5	15017008	Φ4.8 Drill Guide	2
6	15017010	Φ4.8 Soft Tissue Separator (195mm)	1
7	15017011	Φ4.8 Drill Bit	2
8	15001501	Φ3.2 Drill Bit	2
9	15017012	5mm Hexagon Screwdriver	2
10	15017003	6mm Hexagon Screwdriver	2
11	15017009	Φ3.2 Drill Guide	2
12	15017006	3mm Hexagon Screwdriver	2
13	15017014	Φ6.0T-shape Screwdriver	1
14	15017017	Opening Spanner	2
15	15017300	Instrument Case III	1



SK Combined External Fixator (Mini Bone)



Phalangeal and Metacarpal Bone Fixator
(T-shape Double Pins Clamp)



Phalangeal and Metacarpal Bone Fixator
(Double Pins Clamp)

SK Combined External Fixator (Mini Bone)

Mini Bone (D=3mm)	
Product Name	Code
Clamp A (Rod to Rod)	17.233.13.001
Clamp B (Pin to Rod)	17.233.13.002
Clamp B (Rod to Pin)	17.233.13.003
Clamp B (Double Pins)	17.233.13.004



Clamp A
(Rod to Rod)



Clamp B
(Pin to Rod)



Clamp B
(Rod to Pin)



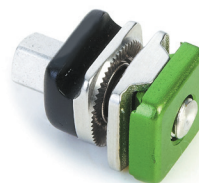
Clamp B
(Double Pins)

SK Combined External Fixator (Mini Bone)

Mini Bone (D=3mm)	
Product Name	Code
Clamp B (Reversed Double Pins)	17.233.13.005
Clamp B (T-shape Double Pins)	17.233.13.006

Connecting Rod	
Product Name	Code
Straight Connecting Rod $\Phi 3 \times 50$ (Aluminium Alloy)	17.233.15.050
Straight Connecting Rod $\Phi 3 \times 100$ (Aluminium Alloy)	17.233.15.100
Straight Connecting Rod $\Phi 3 \times 150$ (Aluminium Alloy)	17.233.15.150

Pin				
Type	Specification			Material
	Dia(mm)	Total L(mm)	Thread L	
Self-tapping and Self- drilling	1.8	45	12	SS
	1.8	50	12	SS
	2.0	45	12	SS
	2.0	50	12	SS



Clamp B
(Reversed Double Pins)

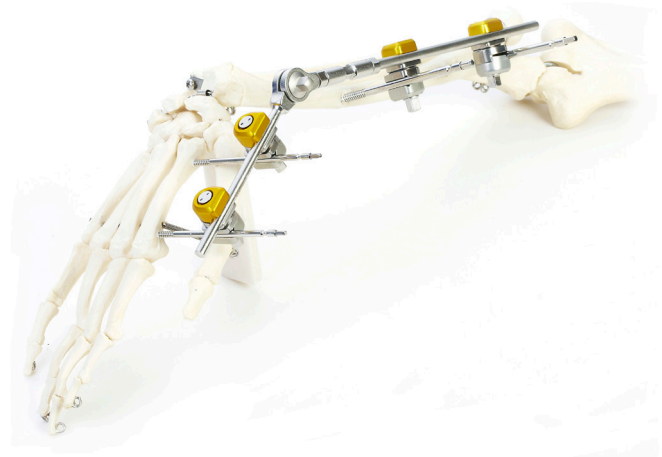


Straight Connecting Rod

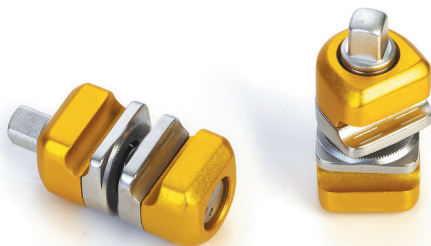


Clamp B
(T-shape Double Pins)

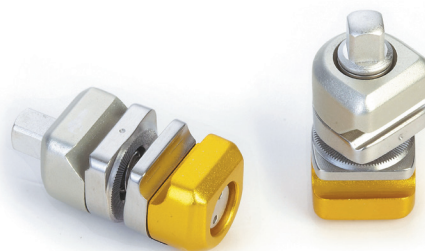
SK Combined External Fixator (Small Bone)



SK Combined External Fixator (Small Bone)

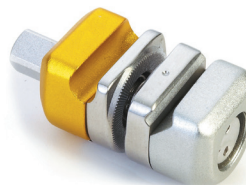


Clamp A
(Rod to Rod)



Clamp B
(Pin to Rod)

Small Bone (D=5mm)	
Product Name	Code
Clamp A (Rod to Rod)	17.233.09.001
Clamp B (Pin to Rod)	17.233.09.002
Clamp B (Rod to Pin)	17.233.09.003
Clamp B (Double Pins)	17.233.09.004



Clamp B
(Rod to Pin)

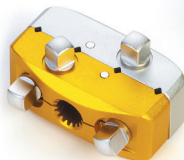


Clamp B
(Double Pins)

SK Combined External Fixator (Small Bone)



Clamp B
(Reversed Double Pins)



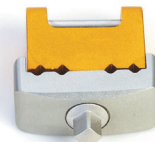
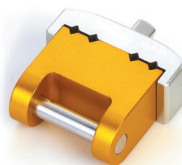
Clamp B
(Four Pins)



Clamp B
(T-shape Double Pins)



Small Bone (D=5mm)	
Product Name	Code
Clamp B (Reversed Double Pins)	17.233.09.005
Clamp B (Four Pins)	17.233.09.006
Clamp B (T-shape Double Pins)	17.233.09.007
Clamp B (Juxta-articular)	17.233.09.008



Clamp B
(Juxta-articular)

SK Combined External Fixator (Small Bone)

Connecting Rod	
Product Name	Code
Curved Connecting Rod (Short/ 30°)	17.233.09.009
Straight Connecting Rod (Short)	17.233.09.010
Straight Connecting Rod $\Phi 5 \times 50$ (Stainless Steel)	17.233.10.050
Straight Connecting Rod $\Phi 5 \times 100$ (Stainless Steel)	17.233.10.100
Straight Connecting Rod $\Phi 5 \times 150$ (Stainless Steel)	17.233.10.150
Straight Connecting Rod $\Phi 5 \times 200$ (Stainless Steel)	17.233.10.200
Straight Connecting Rod $\Phi 5 \times 250$ (Stainless Steel))	17.233.10.250
Straight Connecting Rod $\Phi 5 \times 50$ (Aluminium Alloy)	17.233.16.050
Straight Connecting Rod $\Phi 5 \times 100$ (Aluminium Alloy)	17.233.16.100
Straight Connecting Rod $\Phi 5 \times 150$ (Aluminium Alloy)	17.233.16.150
Straight Connecting Rod $\Phi 5 \times 200$ (Aluminium Alloy)	17.233.16.200
Straight Connecting Rod $\Phi 5 \times 250$ (Aluminium Alloy)	17.233.16.250
Curved Connecting Rod (Semi-Circular, Small)	17.233.12.001
Curved Connecting Rod (Semi-Circular, Medium)	17.233.12.002
Curved Connecting Rod (Semi-Circular, Large)	17.233.12.003
Curved Connecting Rod (Elbow Joint, Short)	17.233.12.004
Curved Connecting Rod (Elbow Joint, Long)	17.233.12.005
Curved Connecting Rod (Wrist Joint)	17.233.12.006



Curved Connecting Rod
(Short/ 30°)



Straight Connecting Rod
(Short)



Straight Connecting Rod

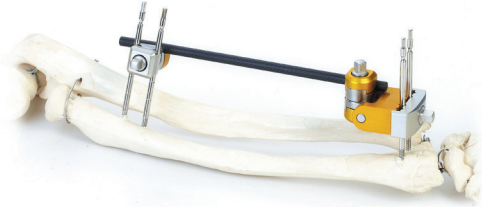


Curved Connecting Rod
(Wrist Joint)



Curved Connecting Rod
(Elbow Joint, Short/Long)

SK Combined External Fixator (Small Bone)



Distal Radius Fixator



Parallel Semi-ring Humeral Fixator

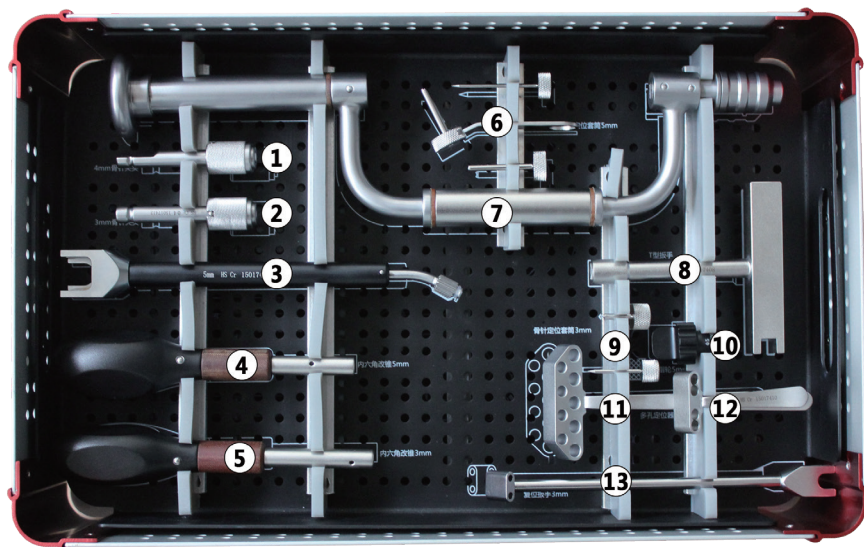


Unilateral Humeral Shaft Fixator

Type	Pin Specification			Materials
	Dia(mm)	Total L(mm)	Thread L	
Self-tapping and Self-drilling	3.0	60	20	SS
	3.0	80	20	SS
	4.0	80	30	SS
	4.0	100	30	SS
	4.0	120	30	SS

External Fixator Instrument Set IV (Small and Mini Bone)

Instrument Set IV (15017499)			
No	Product Code	Name	Qty
1	15017413	Pin Holder 4mm	1
2	15017412	Pin Holder 3mm	1
3	15017407	Resetting Wrench 5mm	1
4	15017402	Hexagonal Screwdriver 5mm	1
5	15017401	Hexagonal Screwdriver 3mm	1
6	15017404	Pin Location Guide 5mm	1
7	15017411	Hand Drill	1
8	15017408	T-shape Wrench	1
9	15017403	Pin Location Guide 3mm	1
10	15017405	Thumb Wheel 5mm	1
11	15017409	Multi-hole Locator	1
12	15017410	Juxta-articular Locator	1
13	15017406	Resetting Wrench 3mm	1
14	15017499	Instrument Case IV	1



SK Combined External Fixator (Large Bone)



Pelvic Fixator



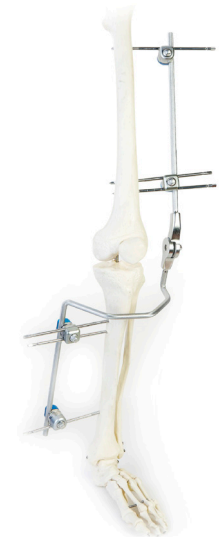
Compressible Femoral
Fixator



Ankle Joint Fixator



Semi-ring Tibial Fixator



Hip Joint Fixator

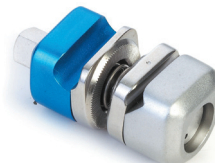
SK Combined External Fixator (Large Bone)



Clamp A
(Rod to Rod)



Clamp B
(Pin to Rod)



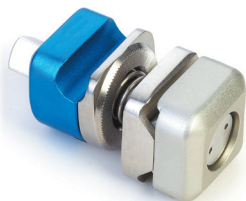
Clamp B
(Rod to Pin)

Large Bone (D=8mm)	
Product Name	Code
Clamp A (Rod to Rod)	17.233.05.001
Clamp B (Pin to Rod)	17.233.05.002
Clamp B (Rod to Pin)	17.233.05.003
Clamp B (Double Pins)	17.233.05.004

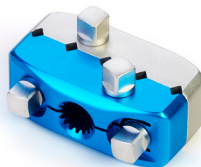


Clamp B
(Double Pins)

SK Combined External Fixator (Large Bone)



Clamp B
(Reversed Double Pins)



Clamp B
(Five Pins)



Clamp B
(T-shape Double Pins)

Large Bone (D=8mm)	
Product Name	Code
Clamp B (Reversed Double Pins)	17.233.05.005
Clamp B (Five Pins)	17.233.05.006
Clamp B (T-shape Double Pins)	17.233.05.007
Curved Connecting Rod (Short/ 30°)	17.233.05.008
Straight Connecting Rod (Short)	17.233.05.009



Curved Connecting Rod
(Short/ 30°)

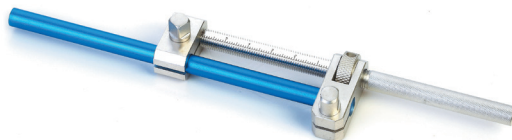


Straight Connecting Rod
(Short)

SK Combined External Fixator (Large Bone)



Straight Connecting Rod
(Adjustable/ Single Rod)



Straight Connecting Rod
(Adjustable/ Two Rods, Short/Long)

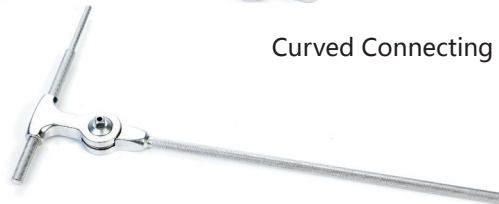


Straight Connecting Rod (Compression)
Clamp B (Compression Rod)

Product Name	Code
Straight Connecting Rod (Adjustable/ Single Rod)	17.233.08.004
Straight Connecting Rod (Adjustable/ Two Rods, Short)	17.233.08.005
Straight Connecting Rod (Adjustable/ Two Rods, Long)	17.233.08.006
Straight Connecting Rod (Compression)	17.233.08.007
Clamp B (Compression Rod)	17.233.08.008
Curved Connecting Rod (Hip Joint, L)	17.233.08.009
Curved Connecting Rod (Hip Joint, R)	17.233.08.010
Curved Connecting Rod (Ankle Joint)	17.233.08.011



Curved Connecting Rod (Hip Joint, L/R)



Curved Connecting Rod (Ankle Joint)

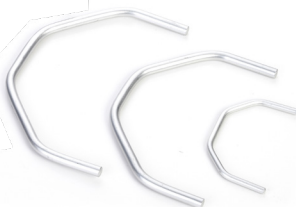
SK Combined External Fixator (Large Bone)

Large Bone (D=8mm)	
Product Name	Code
Straight Connecting Rod $\Phi 8 \times 150$ (Aluminium Alloy)	17.233.06.150
Straight Connecting Rod $\Phi 8 \times 200$ (Aluminium Alloy)	17.233.06.200
Straight Connecting Rod $\Phi 8 \times 250$ (Aluminium Alloy)	17.233.06.250
Straight Connecting Rod $\Phi 8 \times 300$ (Aluminium Alloy)	17.233.06.300
Straight Connecting Rod $\Phi 8 \times 350$ (Aluminium Alloy)	17.233.06.350
Straight Connecting Rod $\Phi 8 \times 400$ (Aluminium Alloy)	17.233.06.400
Curved Connecting Rod (Semi-Circular, Small)	17.233.08.001
Curved Connecting Rod (Semi-Circular, Medium)	17.233.08.002
Curved Connecting Rod (Semi-Circular, Large)	17.233.08.003

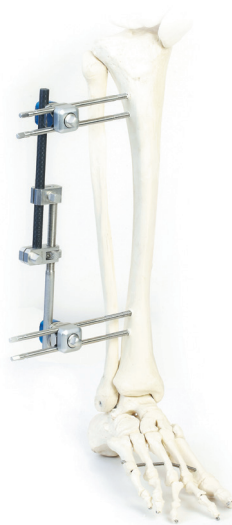
Pin				
Type	Specification			Material
	Dia(mm)	Total L(mm)	Thread L	
Self-tapping and Self-drilling	5.0	120	40	SS
	5.0	150	40	SS
	5.0	180	40	SS
	5.0	200	40	SS



Straight Connecting Rod



Curved Connecting Rod
(Semi-Circular)
(Large/Medium/Small)



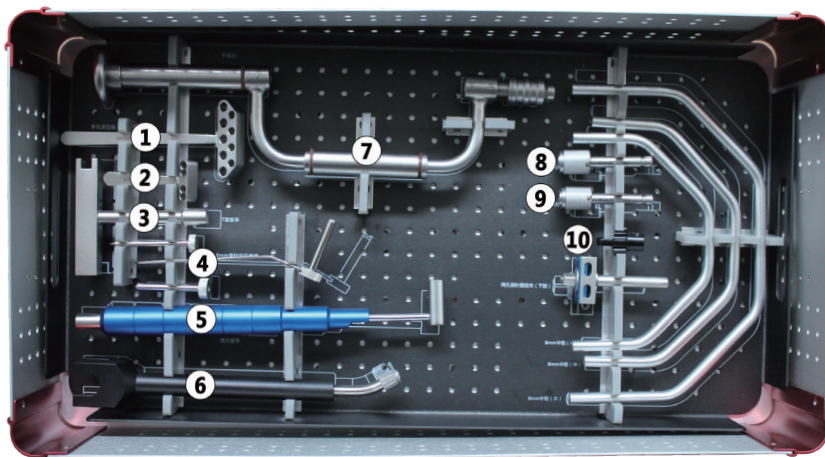
Straight Adjustable
Tibial Fixator



Parallel Tibial
Shaft Fixator

External Fixator Instrument Set V (Large Bone)

Instrument Set V (15017599)			
No	Product Code	Name	Qty
1	15017409	Multi-hole Locator	1
2	15017410	Juxta-articular Locator	1
3	15017408	T-shape Wrench	1
4	15017501	Pin Location Guide 5mm	1
5	15017504	Torque Spanner	1
6	15017503	Resetting Wrench 8mm	1
7	15017411	Hand Drill	1
8	15017505	Pin Holder 5mm	1
9	15017413	Pin Holder 4mm	1
10	15017502	Thumb Wheel 8mm	1
11	15017500	Instrument Case V	1



More Professional More Effective

Your Reliable WASTON

WASTON 华森
M E D I C A L

Changzhou Waston Medical Appliance Co.,Ltd
9Xihu Road,Wujin Hi-Tech Industry Zone, Jiangsu Province,China

TEL:+86-519-86302873

Email:info@wastonmed.com

www.wastonmed.com

 CE 0123

HS20180925