

X-RAY MACHINE

FEATURES

- High Sensitivity, detect diameter 0.4mm ferrous and stainless steel ball
- Detect contaminants automatically include ferrous, non-ferrous metals, stones, plastic even if packed by CANS
- No product affection and it can detect high salty products
- Contaminants detectable packed in aluminum bags
- It can detect ham sausage include copin packing.

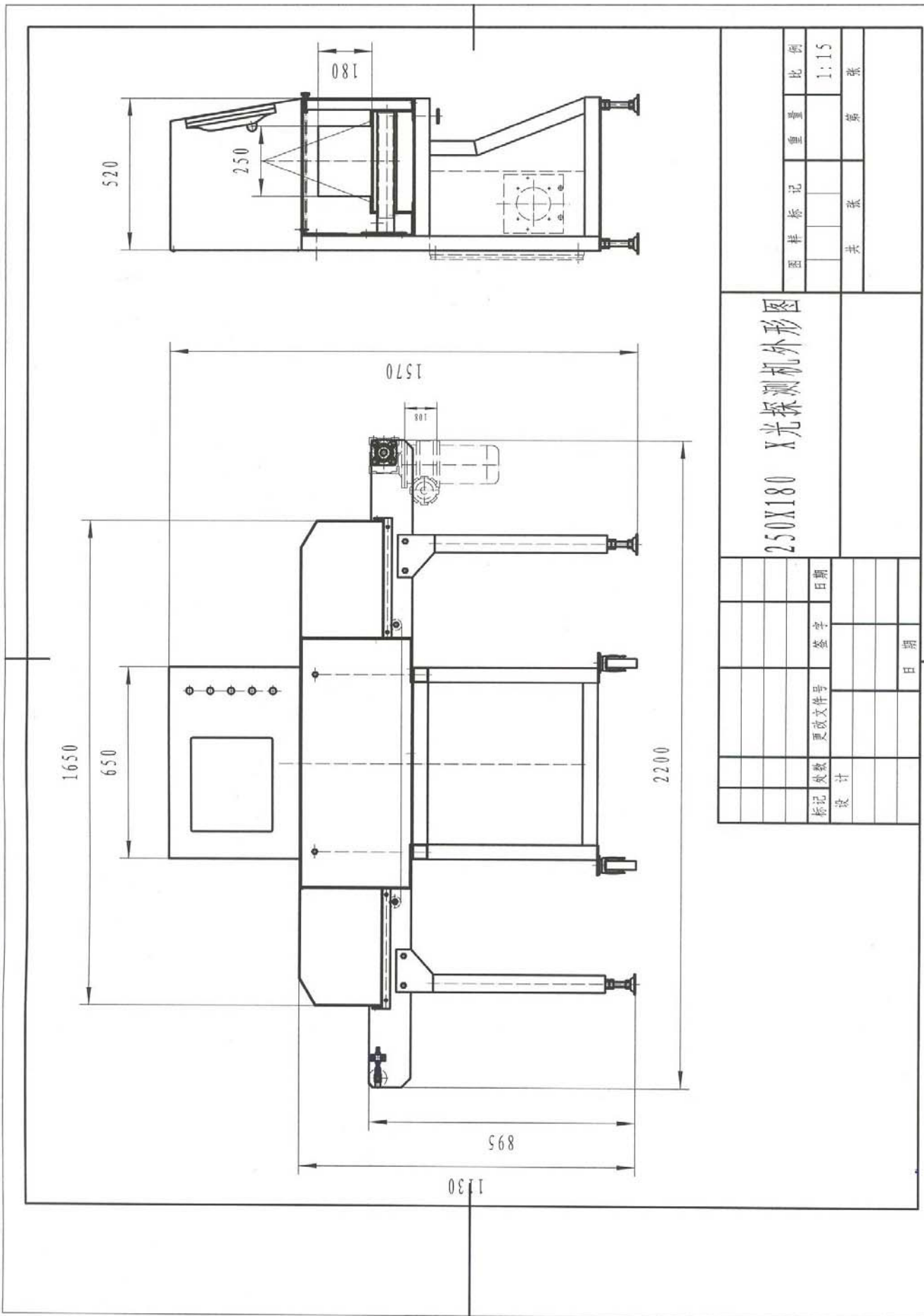
APPLICATION

- Widely used in food, pharmaceutical and consumable products industries; Widely used for bag food, canned food to detect contaminants etc.

SPECIFICATION

- Model No.: XF-2518
- Sensitivity: Fe $\Phi \geq 0.8\text{mm}$, SUS $\Phi \geq 0.8\text{mm}$; SUS wire 0.8 mm dia. x 1mm long
- Detection Width: 250mm
- Detection Height: 180mm
- X-ray Output: 80kv, 2.5Ma, U.S. BRAND
- Safety: X-ray leakage does: Max. 0.23 $\mu\text{SV/h}$
- Display: 17 Inch Color LCD
- Computer: All-in-one industry use PC
- Operation Method: Touch Panel
- Language: English
- Image Distinguish: 16 bit
- Present Memory: Self Learn Function
- Data Transfer: 100M Ethernet network
- Belt Speed: 8~35m/min (variable speed depending on product)
- Maximum Product Weight: Option: 2~3kg 20m/min
- Power Source: AC200 to 240V, single phase, 50/60Hz,
- Environmental conditions: Temperature -5 $^{\circ}\text{C}$ ~40 $^{\circ}\text{C}$ (optional air conditioner) relative humidity 30%~85%, no condensation
- Casing material: Stainless steel (SUS304)





图样标记		重量	比例
		张	1:1.5
共		张	张
250X180 X光探测机外形图			
标记	外数	更改文件号	签字
设计			日期
			日期

X-RAY MACHINE

FEATURES

- High Sensitivity, detect diameter 0.4mm ferrous and stainless steel ball
- Detect contaminants automatically include ferrous, non-ferrous metals, stones, plastic even if packed by CANS
- No product affection and it can detect high salty products
- Contaminants detectable packed in aluminum bags
- It can detect ham sausage include copin packing.

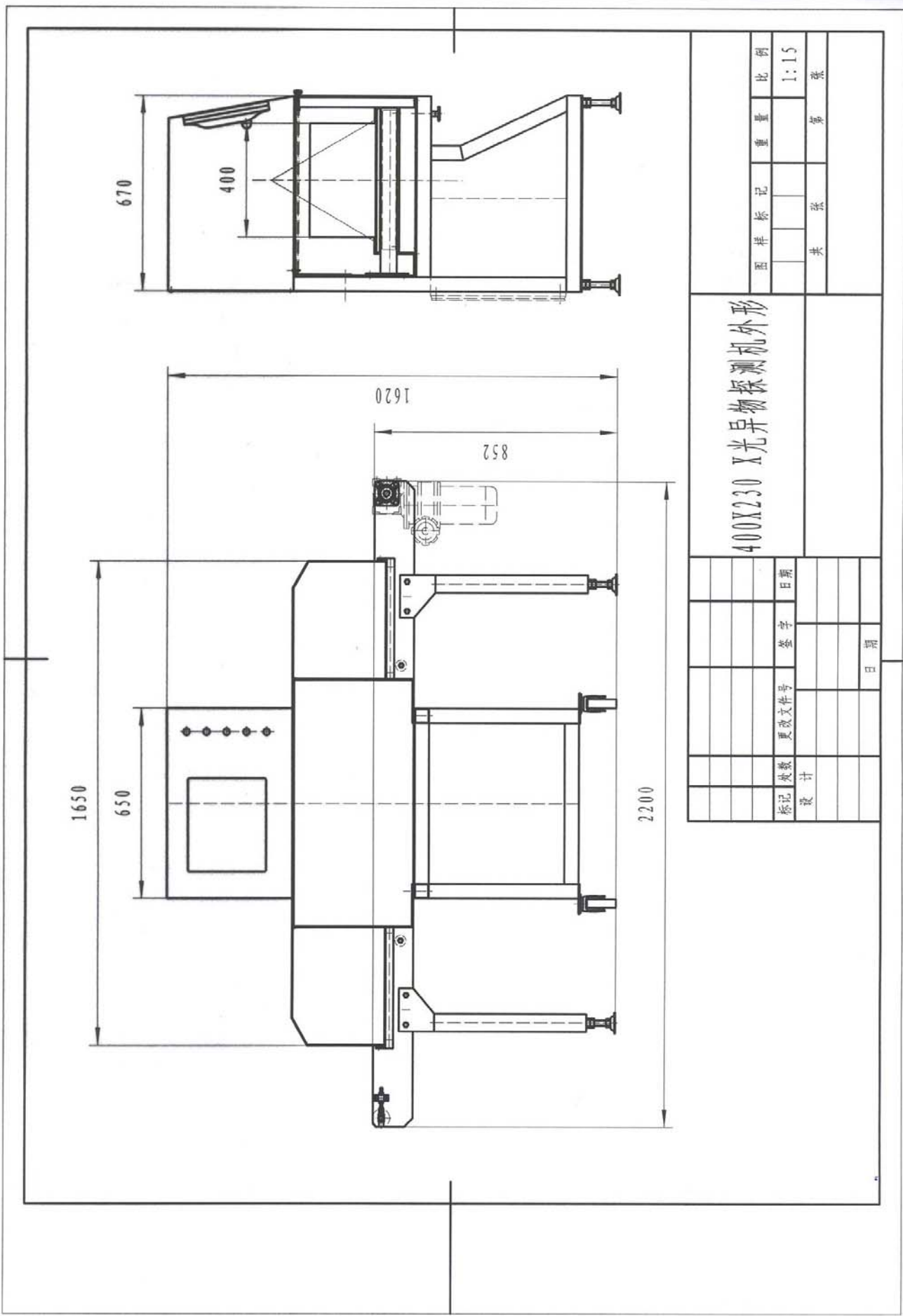
APPLICATION

- Widely used in food, pharmaceutical and consumable products industries; Widely used for bag food, canned food to detect contaminants etc.

SPECIFICATION

- Model No.: XF-4023
- Sensitivity: Fe $\Phi \geq 0.8\text{mm}$, SUS $\Phi \geq 0.8\text{mm}$; SUS wire 0.8 mm dia. x 1mm long
- Detection Width: 400mm
- Detection Height: 230mm
- X-ray Output: 80kv, 2.5Ma, U.S. BRAND
- Safety: X-ray leakage does: Max. 0.23 $\mu\text{SV/h}$
- Display: 17 Inch Color LCD
- Computer: All-in-one industry use PC
- Operation Method: Touch Panel
- Language: English
- Image Distinguish: 16 bit
- Present Memory: Self Learn Function
- Computer Memory: 80G Hard Disc
- Data Transfer: 100M Ethernet network
- Belt Speed: 8~35m/min (variable speed depending on product)
- Maximum Product Weight: Option: 2~3kg
- Power Source: AC200 to 240V, single phase, 50/60Hz,
- Environmental conditions: Temperature -2 $^{\circ}\text{C}$ ~40 $^{\circ}\text{C}$ (optional air conditioner) relative humidity 30%~85%, no condensation
- Casing material: Stainless steel (SUS304)





400X230 X光异物探测机外形

图样	标记	重量	比例
			1:15
共	张	第	张
标记	数量	日期	
设计			
校对			
更改文件号			
签字			
日期			