


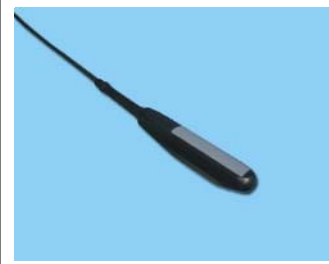

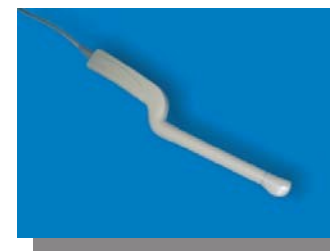


B 超探头 B-Mode PROBE

Probe series	Cavity probe	Rectal probe	Cavity probe	Animals probe	Convex array probe
Image					
Descriptions	Centr Frequency: 6.5MHz Number of array elements: 128/192	Centr Frequency: 7.5MHz Number of array elements: 80	Centr Frequency: 6.5MHz Number of array elements: 128	Centr Frequency: 7.5MHz Number of array elements: 80	Centr Frequency: 3.5MHz Number of array elements: 128/192



The probe compatible models

OEM part number	Compatible models NO.	OEM part number	Compatible models NO.
35C50HA	Mindray:DP-9900plus	75L38HA	Mindray:DP-9900plus
65EC10HA	Mindray:DP-9900plus	35C50EA	Mindray:DP-8800plus, DP-6600,DP-6600Vet
35C50EB	Mindray:DP-7700,DP-3300,DP-3300Vet,DP-2200,DP-1100plus	75L38EA	Mindray:DP-8800plus,DP-6600,DP-6600Vet.
75L38EB	Mindray:DP-7700,DP-3300,DP-3300Vet,DP-2200,DP-1100plus	65EC10EA	Mindray:DP-8800plus,DP-6600,DP-6600Vet
65EC10EB	Mindray:DP-7700,DP-3300,DP-3300Vet,DP-2200,DP-1100plus	EZU-PL21	SIUI:CTS-200,200A,240A,280,305 Hitachi:
EZU-PC3A	SIUI:CTS-310B Hitachi:	EZU-PC3B	SIUI:CTS-260,285,385(Plus),405,465
EZU-PC3C	SIUI:CTS-285,385(plus),280.	EZU-PC3D	SIUI:CTS-310B Hitachi:
HY7208C3	Haiying	HY7204C3R40	Haiying
HY7206C3R40	Haiying	SJN7211C1	Haiying
SJN7211L1A	Haiying	C60	Chison
C3560	Belson	L3100	Belson
3.5C	GE: logiq3, logiq5, logiq7, logiq9, Vivid7, P5	3CB	GE: logiq200
C36	GE: logiq180	L39	GE: logiq50
3.5C40S	Siemens: Sonoline Prima, Sonoline Adara	UST-934N-3.5	Aloka: SSD-500, 620, 625, 630, 650, 650L, 1100.
PVF-375MT	Toshiba: SSA-140A, 270A, 340A, 350A.	PVG-366M	Toshiba: SSA-220A
9123	Aloka: Prosound Alpha 6	UST-5524	Aloka: Prosound Alpha 6