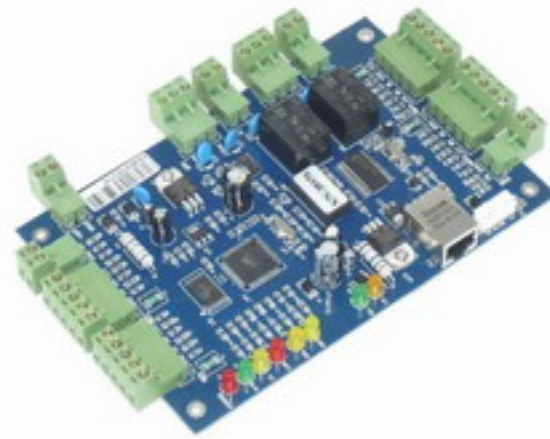


TCP/IP or RS485 Access controller

The Dwell-N01 is TCP/IP communication now capable to handle 1 door / 2 readers
 The Dwell-N02 is TCP/IP communication now capable to handle 2 doors / 4 readers
 The Dwell-N04 is TCP/IP communication now capable to handle 4 doors / 4 readers



Dwell-N01

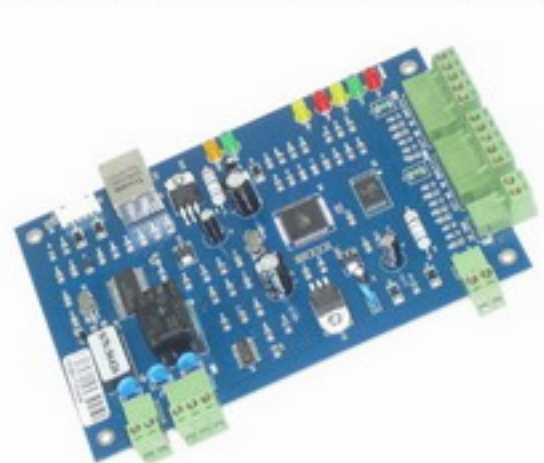


Dwell-N02



Dwell-N04

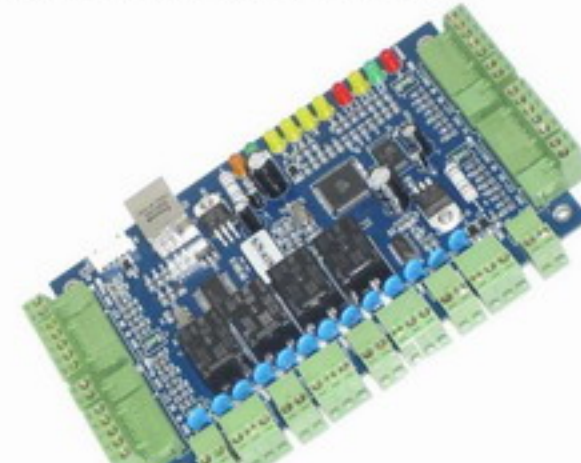
The Dwell-R01 is RS485 communication now capable to handle 1 door / 2 readers .
 The Dwell-R02 is RS485 communication now capable to handle 2 doors / 4 readers .
 The Dwell-R04 is RS485 communication now capable to handle 4 doors / 4 readers .



Dwell-R01



Dwell-R02

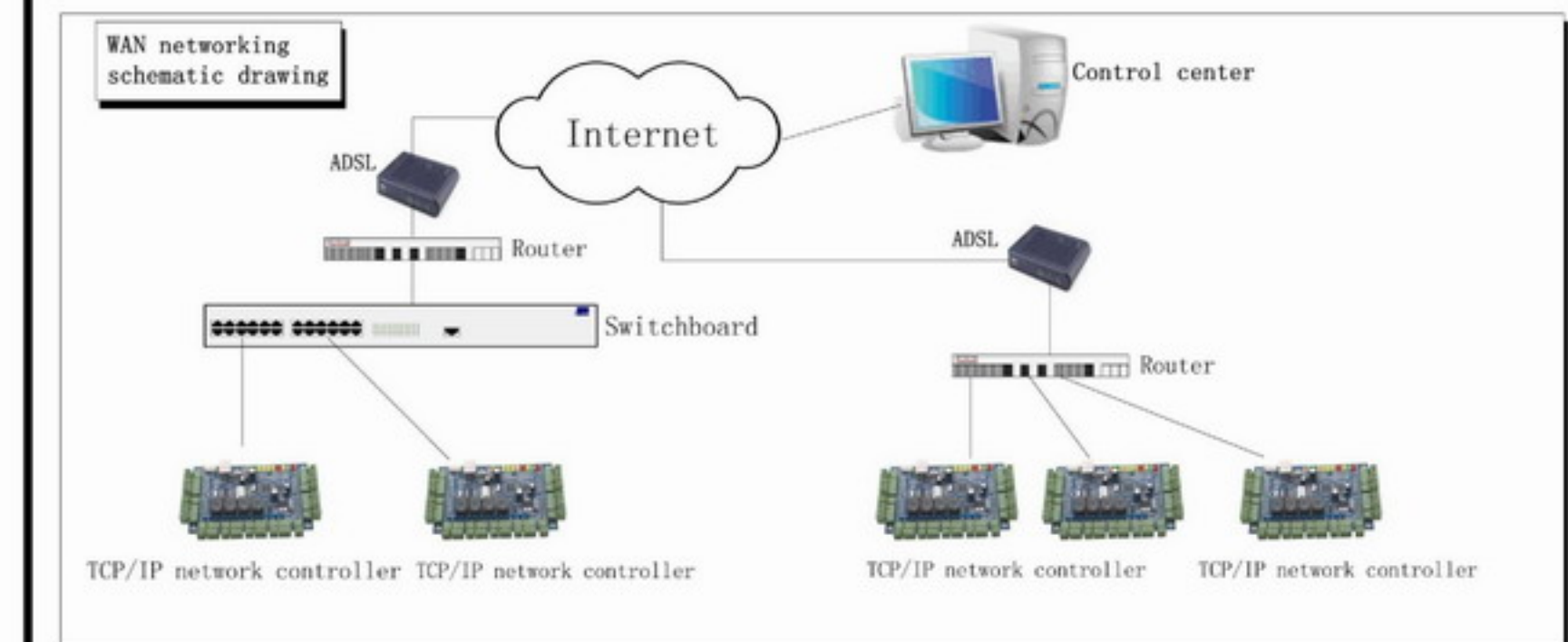
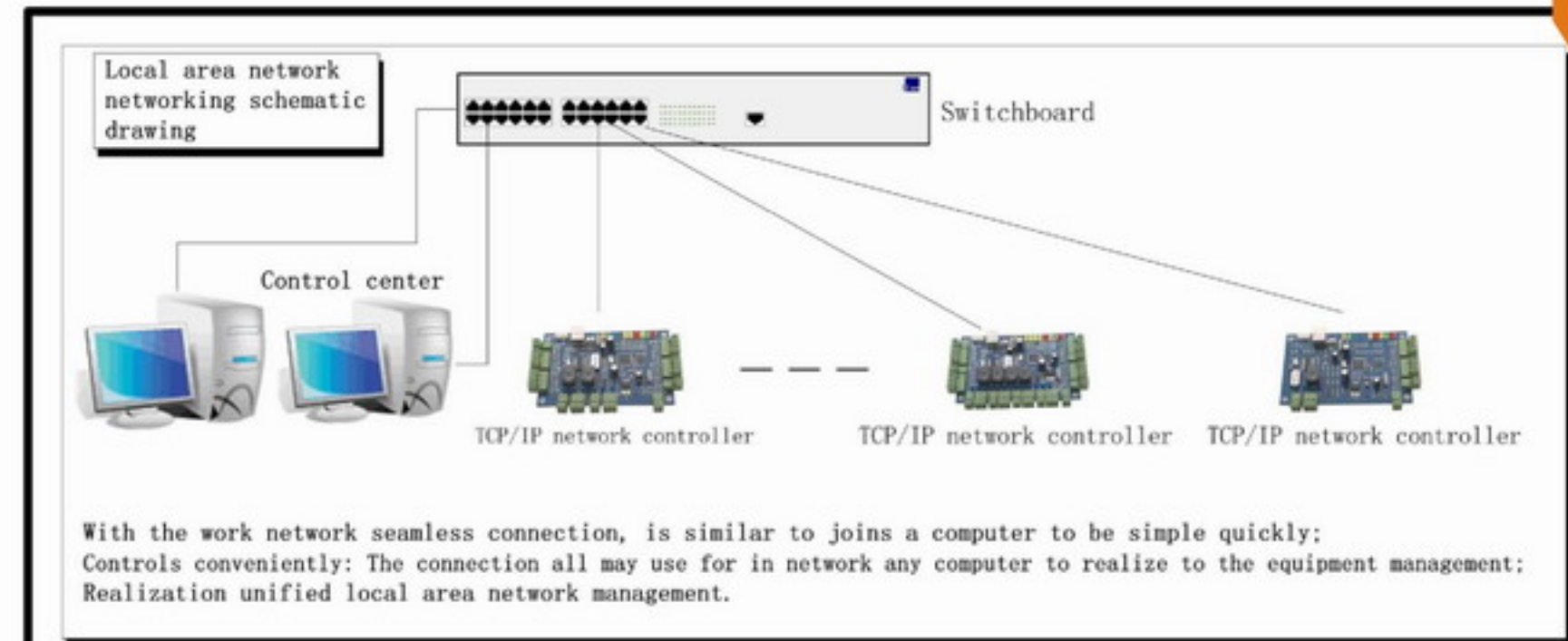


Dwell-R04

Dwell Access Controller fits any type of installations, up to 20,000 users, from single buildings to multiple sites spread over remote locations and linked via RS485, RS232 or TCP/IP.

The user-friendly Access software programs the system within a few minutes, from a non-dedicated PC. Access Software provides numerous access control and alarm monitoring features: expiry date for clubs, automatic activation, interlock between two doors, time zones, supervision, anti-passback, activity reports... Each alarm input is programmable: operating mode (NO or NC), time zones, local reflex (activation of outputs according to input status). Specific alarms are

triggered according to the number of unsuccessful attempts, the time limit for door closing (door alarm), the duress code... Whenever required, the data stored in the controllers is transferred to the computer and activity reports are printed. Each controller works independently and keeps its database.



Matters needing attention:

- Although the controller has good guards against the static electricity anti-radar, strikes, guards against the leakage design, but guarantees the alternating current grounding and the controller engine case good connection by all means must, also real earth.
- Reads the card, the button installment altitude is apart from the ground 1.45 meters, may carry on the appropriate readjustment according to the actual need.
- All non-conventional operation, please by all means must first links up with our engineer. Meets the controller and other big electric current equipment on the identical power supply plug.
- The controller suggested installs and so on is advantageous for the service in the weak electric-pump well