

Test Report

Report No. RLSZB000307200002

Page 1 of 6

Applicant SHENZHEN ZIC ELECTRONICS CO.,LTD.

Address FUYONG TOWN,BAOAN DISTRICT,SHENZHEN.

Report on the submitted sample(s) said to be

Sample Name CONDUCTIVE TAPE
Sample Description Silver-gray cloth with adhesive paste
Part No. FC-2015
Sample Received Date Sep. 3, 2009
Testing Period Sep. 3, 2009 to Sep. 7, 2009

Test Requested As specified by client, to determine the Lead(Pb), Cadmium(Cd), Mercury(Hg), Hexavalent Chromium(Cr(VI)), Polybrominated Biphenyls(PBBs), Polybrominated Diphenyl Ethers(PBDEs), Fluorine (F), Chlorine(Cl), Bromine(Br), Iodine(I) content in the submitted sample and it was tested as a whole.

Test Method Please refer to the following page(s).

Test Result(s) Please refer to the following page(s).

Tested by



Inspected by



Approved by

Technical Manager

Date

Sep. 7, 2009

No. 11360384

Test Report

Report No. RLSZB000307200002

Page 2 of 6

Test Method

Test Item(s)	Pretreatment Method	Measured Equipment(s)	Report Limit
Lead(Pb)	IEC 62321:2008 Ed.1 Sec.10	ICP-OES	2 mg/kg
Cadmium(Cd)	IEC 62321:2008 Ed.1 Sec.10	ICP-OES	2 mg/kg
Mercury(Hg)	IEC 62321:2008 Ed.1 Sec.7	ICP-OES	2 mg/kg
Hexavalent Chromium(Cr(VI))	IEC 62321:2008 Ed.1 Annex C	UV-Vis	2 mg/kg
Polybrominated Biphenyls(PBBs)	IEC 62321:2008 Ed.1 Annex A	GC-MS	5 mg/kg
Polybrominated Diphenyl Ethers(PBDEs)	IEC 62321:2008 Ed.1 Annex A	GC-MS	5 mg/kg
Fluorine(F)	Refer to BS EN 14582:2007	IC	10 mg/kg
Chlorine(Cl)	Refer to BS EN 14582:2007	IC	10 mg/kg
Bromine(Br)	Refer to BS EN 14582:2007	IC	10 mg/kg
Iodine(I)	Refer to BS EN 14582:2007	IC	10 mg/kg

Test Result(s)

Tested Item(s)	Content
Lead(Pb)	N.D.
Cadmium (Cd)	N.D.
Mercury(Hg)	N.D.
Hexavalent Chromium(Cr(VI))	N.D.

Tested Item(s)	Content
Polybrominated Biphenyls(PBBs)	
Monobromobiphenyl	N.D.
Dibromobiphenyl	N.D.
Tribromobiphenyl	N.D.
Tetrabromobiphenyl	N.D.
Pentabromobiphenyl	N.D.
Hexabromobiphenyl	N.D.
Heptabromobiphenyl	N.D.
Octabromobiphenyl	N.D.
Nonabromobiphenyl	N.D.
Decabromobiphenyl	N.D.

Test Report

Report No. RLSZB000307200002

Page 3 of 6

Tested Item(s)	Content
Polybrominated Diphenyl Ethers(PBDEs)	
Monobromodiphenyl ether	N.D.
Dibromodiphenyl ether	N.D.
Tribromodiphenyl ether	N.D.
Tetrabromodiphenyl ether	N.D.
Pentabromodiphenyl ether	N.D.
Hexabromodiphenyl ether	N.D.
Heptabromodiphenyl ether	N.D.
Octabromodiphenyl ether	N.D.
Nonabromodiphenyl ether	N.D.
Decabromodiphenyl ether	N.D.
Tested Item(s)	Content
Halogen(s)	
Fluorine (F)	N.D.
Chlorine (Cl)	N.D.
Bromine (Br)	N.D.
Iodine (I)	N.D.

Note: The sample had been dissolved totally tested for Lead, Mercury, Cadmium.

-N.D. = Not Detected (<Report Limit)

-mg/kg = ppm = parts per million

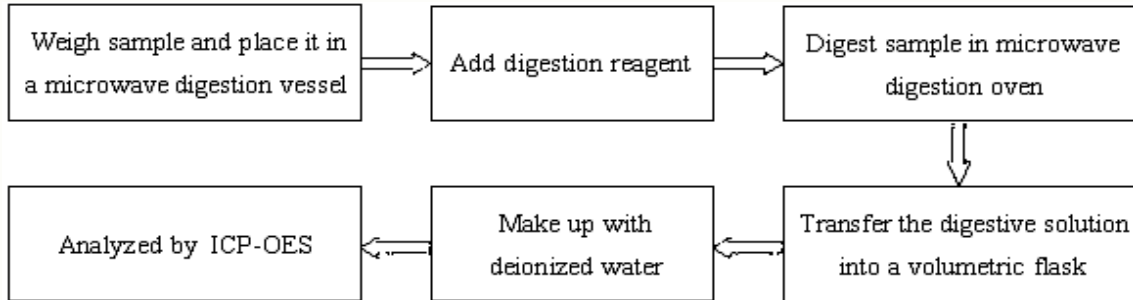
Test Report

Report No. RLSZB000307200002

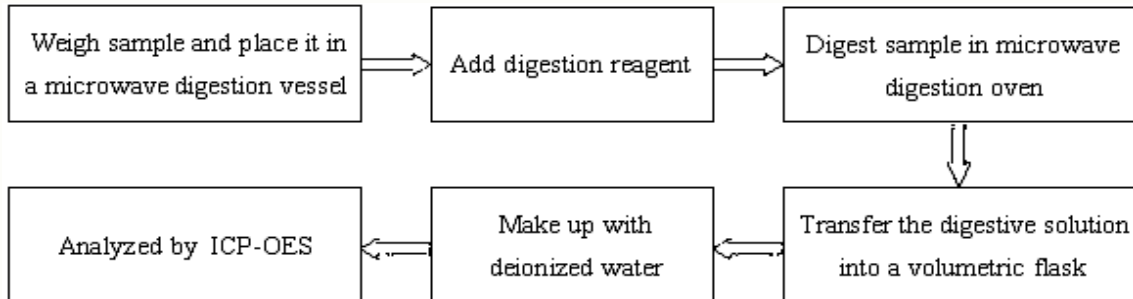
Page 4 of 6

Test Process

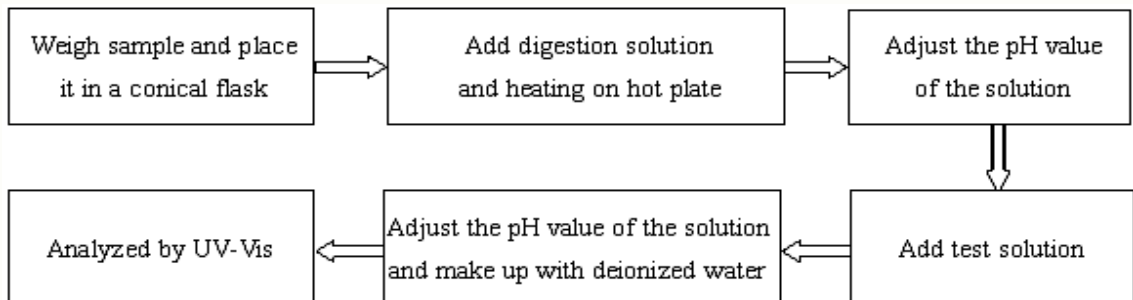
1. Lead(Pb), Cadmium(Cd)



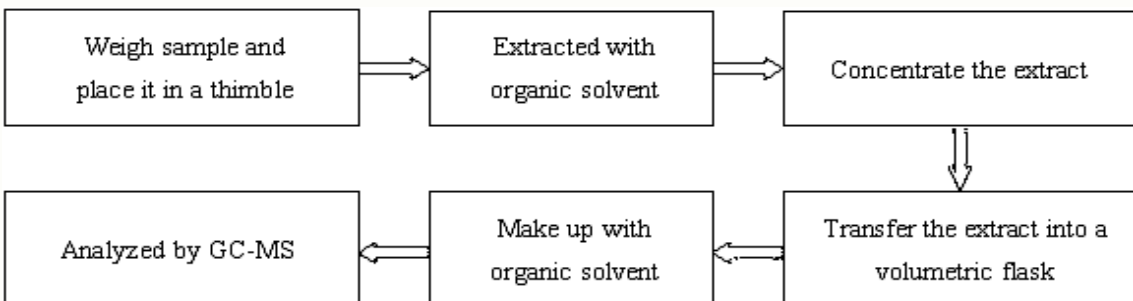
2. Mercury(Hg)



3. Hexavalent Chromium(Cr(VI))



4. Polybrominated Biphenyls(PBBs), Polybrominated Diphenyl Ethers(PBDEs)

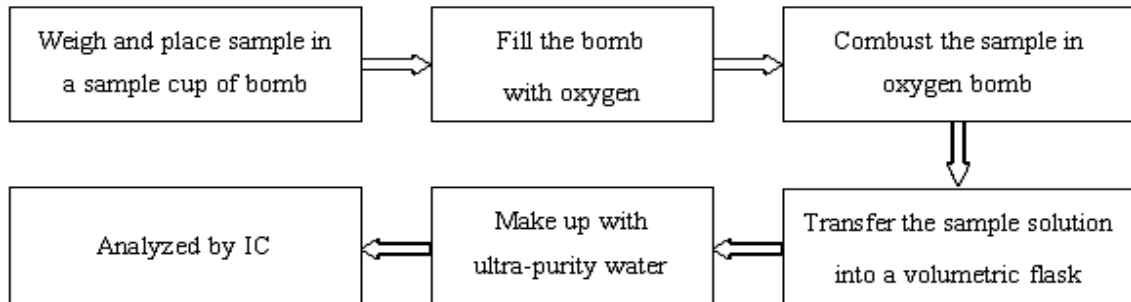


Test Report

Report No. RLSZB000307200002

Page 5 of 6

5. Fluorine(F), Chlorine(Cl), Bromine(Br), Iodine(I)

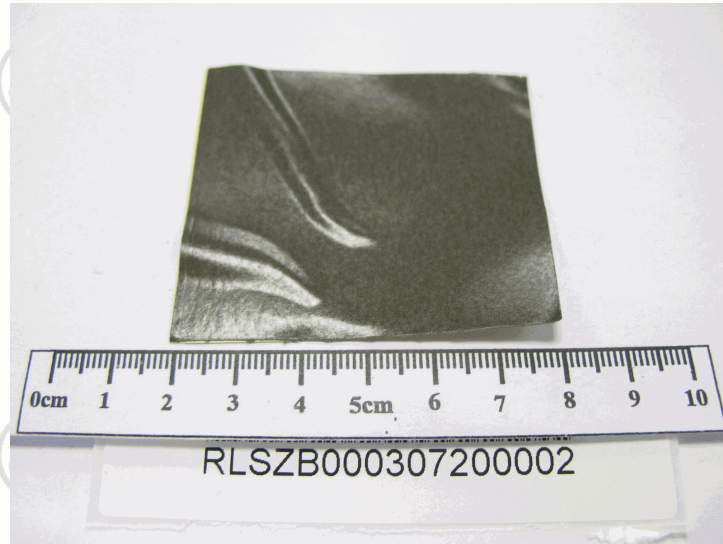


Test Report

Report No. RLSZB000307200002

Page 6 of 6

Photo(s) of the sample(s)



*** End of report ***

This report is considered invalidated without the Special Seal for Inspection of the CTI. This report shall not be altered, increased or deleted. The results shown in this test report refer only to the sample(s) tested. Without written approval of CTI, this test report shall not be copied except in full and published as advertisement.

Building C, Hongwei Industrial Zone, Baoan 70 District, Shenzhen