



Test Report

Report No. RLSZB000241320001

Page 1 of 6

Applicant SHENZHEN ZIC ELECTRONICS CO.,LTD.

Address FUYONG TOWN, BAOAN DISTRICT, SHENZHEN.

Report on the submitted sample(s) said to be

Sample Name 双面导电胶带

Sample Description Silver-gray adhesive paste

Part No. FC-2005

Material Non woven

Sample Received Date Jul. 1, 2009

Testing Period Jul. 1, 2009 to Jul. 3, 2009

Test Requested

As specified by client, to determine the Lead(Pb), Cadmium(Cd), Mercury(Hg), Hexavalent Chromium(Cr(VI)), Polybrominated Biphenyls(PBBs), Polybrominated Diphenyl Ethers(PBDEs), Fluorine(F), Chlorine(Cl), Bromine(Br), Iodine(I) content in the submitted sample.

Test Method

Please refer to the following page(s).

Test Result(s)

Please refer to the following page(s).

Tested by



Inspected by



Approved by

Technical Manager

Date

Jul. 3, 2009

No. 83573408



Test Report

Report No. RLSZB000241320001

Page 2 of 6

Test Method

Test Item(s)	Pretreatment Method	Measured Equipment(s)	Report Limit
Lead(Pb)	IEC 62321:2008 Ed.1 Sec.8	ICP-OES	2 mg/kg
Cadmium(Cd)	IEC 62321:2008 Ed.1 Sec.8	ICP-OES	2 mg/kg
Mercury(Hg)	IEC 62321:2008 Ed.1 Sec.7	ICP-OES	2 mg/kg
Hexavalent Chromium(Cr(VI))	IEC 62321:2008 Ed.1 Annex C	UV-Vis	2 mg/kg
Polybrominated Biphenyls(PBBs)	IEC 62321:2008 Ed.1 Annex A	GC-MS	5 mg/kg
Polybrominated Diphenyl Ethers(PBDEs)	IEC 62321:2008 Ed.1 Annex A	GC-MS	5 mg/kg
Fluorine(F)	Refer to BS EN 14582:2007	IC	10 mg/kg
Chlorine(Cl)	Refer to BS EN 14582:2007	IC	10 mg/kg
Bromine(Br)	Refer to BS EN 14582:2007	IC	10 mg/kg
Iodine(I)	Refer to BS EN 14582:2007	IC	10 mg/kg

Test Result(s)

Tested Item(s)	Content
Lead(Pb)	N.D.
Cadmium (Cd)	N.D.
Mercury(Hg)	N.D.
Hexavalent Chromium(Cr(VI))	N.D.

Tested Item(s)	Content
Polybrominated Biphenyls(PBBs)	
Monobromobiphenyl	N.D.
Dibromobiphenyl	N.D.
Tribromobiphenyl	N.D.
Tetrabromobiphenyl	N.D.
Pentabromobiphenyl	N.D.
Hexabromobiphenyl	N.D.
Heptabromobiphenyl	N.D.
Octabromobiphenyl	N.D.
Nonabromobiphenyl	N.D.
Decabromobiphenyl	N.D.

Test Report

Report No. RLSZB000241320001

Page 3 of 6

Tested Item(s)	Content
Polybrominated Diphenyl Ethers(PBDEs)	
Monobromodiphenyl ether	N.D.
Dibromodiphenyl ether	N.D.
Tribromodiphenyl ether	N.D.
Tetrabromodiphenyl ether	N.D.
Pentabromodiphenyl ether	N.D.
Hexabromodiphenyl ether	N.D.
Heptabromodiphenyl ether	N.D.
Octabromodiphenyl ether	N.D.
Nonabromodiphenyl ether	N.D.
Decabromodiphenyl ether	N.D.
Tested Item(s)	Content
Halogen(s)	
Fluorine (F)	N.D.
Chlorine (Cl)	N.D.
Bromine (Br)	N.D.
Iodine (I)	N.D.

Note: -N.D. = Not Detected (<Report Limit)
 -mg/kg = ppm = parts per million

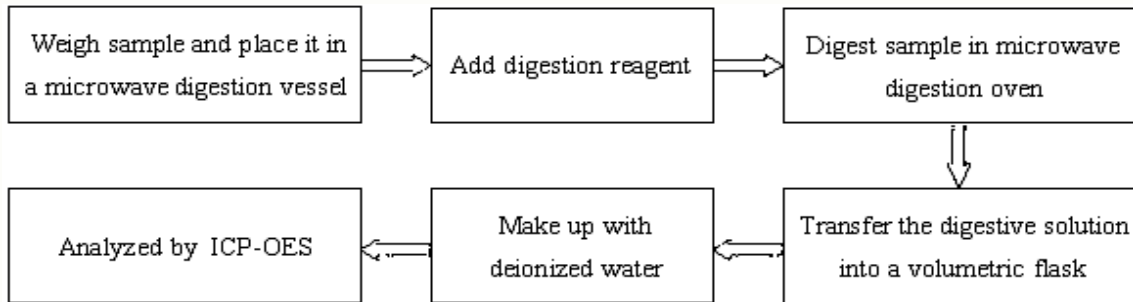
Test Report

Report No. RLSZB000241320001

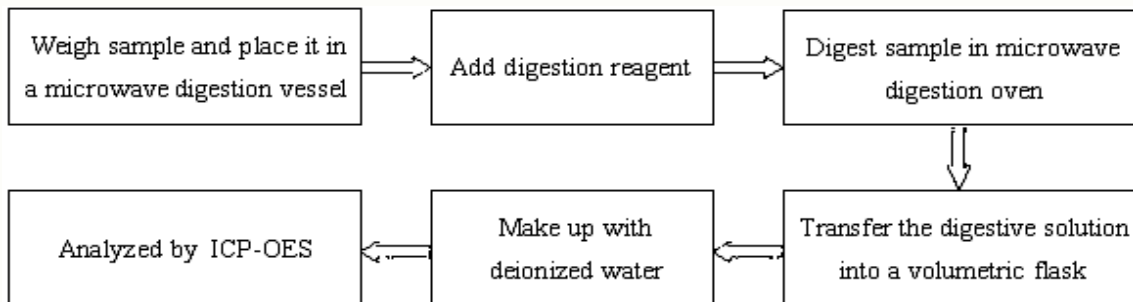
Page 4 of 6

Test Process

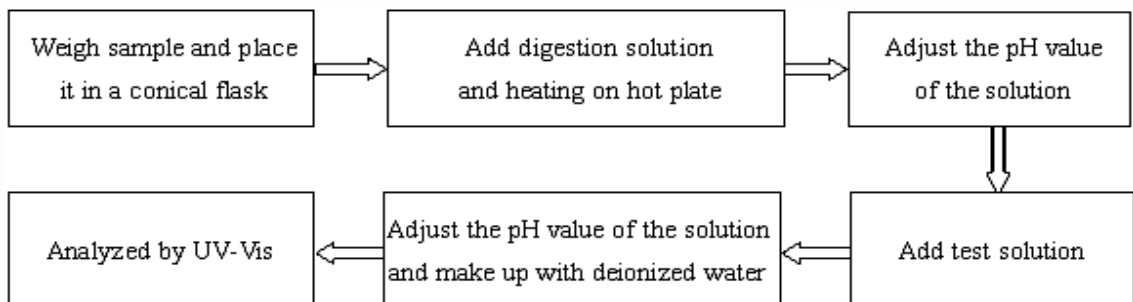
1. Lead(Pb), Cadmium(Cd)



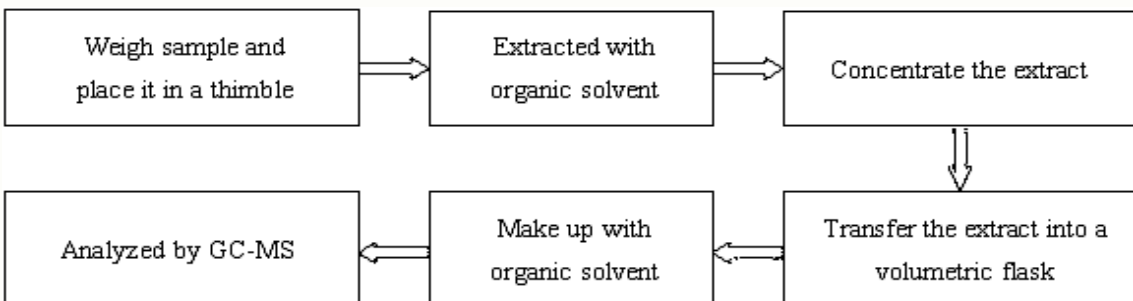
2. Mercury(Hg)



3. Hexavalent Chromium(Cr(VI))



4. Polybrominated Biphenyls(PBBs), Polybrominated Diphenyl Ethers(PBDEs)

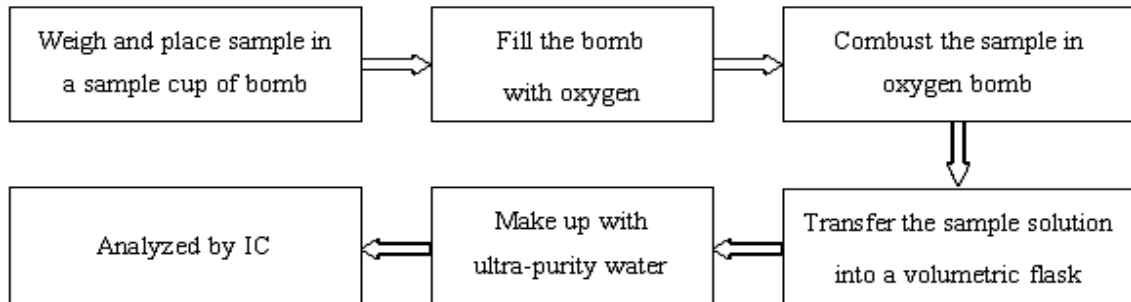


Test Report

Report No. RLSZB000241320001

Page 5 of 6

5. Fluorine(F), Chlorine(Cl), Bromine(Br), Iodine(I)

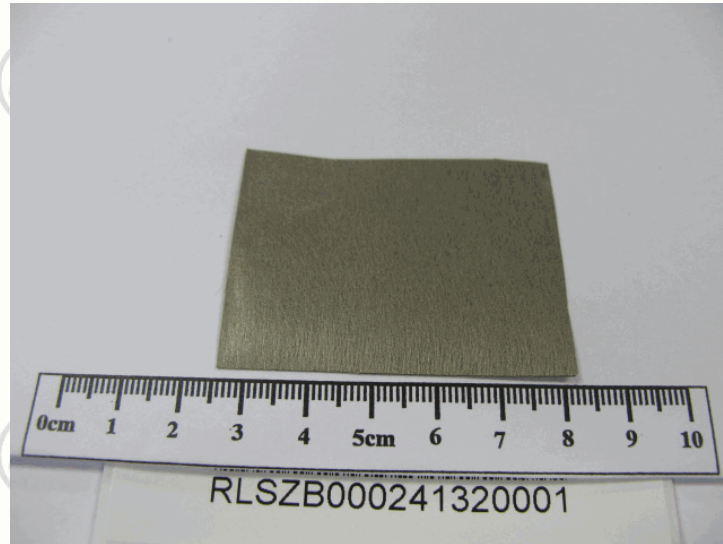


Test Report

Report No. RLSZB000241320001

Page 6 of 6

Photo(s) of the sample(s)



*** End of report ***

This report is considered invalidated without the Special Seal for Inspection of the CTI. This report shall not be altered, increased or deleted. The results shown in this test report refer only to the sample(s) tested. Without written approval of CTI, this test report shall not be copied except in full and published as advertisement.

Building C, Hongwei Industrial Zone, Baoan 70 District, Shenzhen