

RS/LB/RL

RATCHET, REVOLUTION AND DIRECT DRIVE COUNTER

RATCHET COUNTER

Adds 1 count for each 40° ~ 45° actuation of lever.
Count Speed: 200 ~ 500 counts / minute

REVOLUTION COUNTER

Adds 1 count for every complete revolution of the shaft.
Count Speed: 600 revolutions / minute

DIRECT DRIVE COUNTER

Adds 10 counts for every complete revolution (1 count / 1/10 shaft revolution) of the shaft.
Count Speed: 100 revolutions / minute

COUNT DIRECTION / SHAFT POSITION

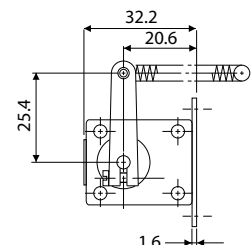
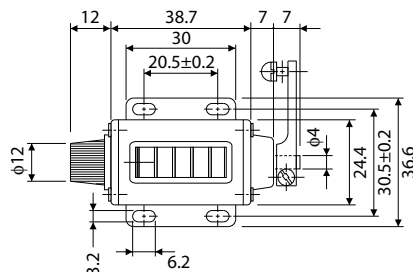
RIGHT SHAFT TOP GOING	RIGHT SHAFT TOP COMING	LEFT SHAFT TOP GOING	LEFT SHAFT TOP COMING

MODEL SELECTION

TYPE	DIGITS	FIGURES (mm)	TYPE (I)	TYPE (II)	TYPE (III)	TYPE (IV)
RATCHET	5	4.8 × 2.4	RS-204-5 (I)	RS-204-5 (II)	RSL-204-5 (III)	RSL-204-5 (IV)
	4	4.4 × 2.8	RS-4 (I)	—	—	—
	5		RS-5 (I)	RS-5 (II)	—	—
	6		RS-6 (I)	—	—	—
REVOLUTION	5	6.0 × 4.5	RS-303-5 (I)	—	—	—
	4	4.4 × 2.8	LB-4 (I)	—	—	—
5	LB-5 (I)		—	—	—	
DIRECT DRIVE	4	4.4 × 2.8	RL-4 (I)	—	—	—
	5		RL-5 (I)	—	—	—
	5	6.0 × 4.5	RL-219-5 (I)	—	—	—

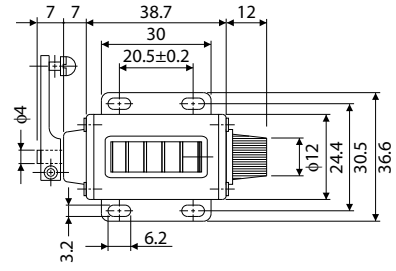
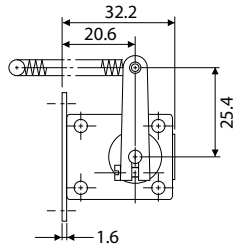
DIMENSIONS

RS-204-5 (I)
RS-204-5 (II)

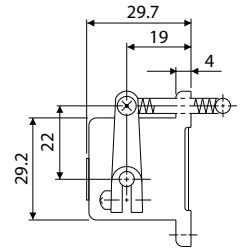
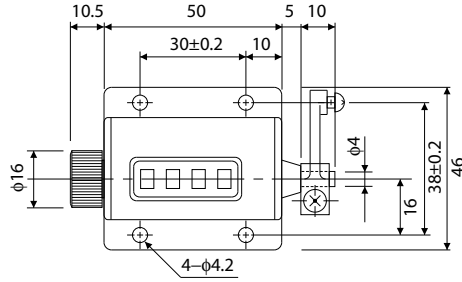
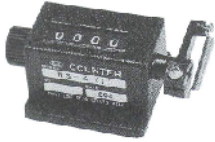


DIMENSIONS

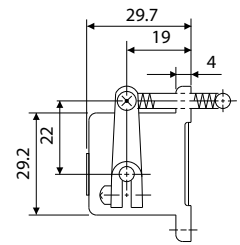
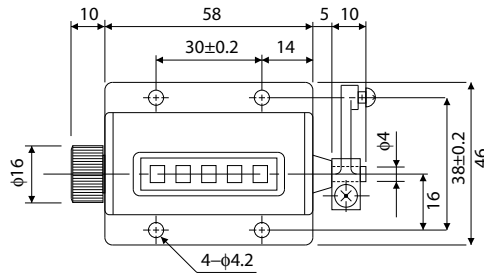
RSL-204-5 (III)
RSL-204-5 (IV)



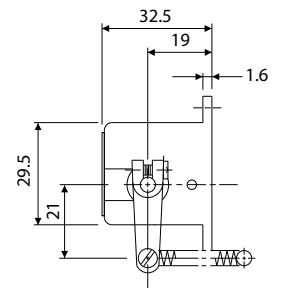
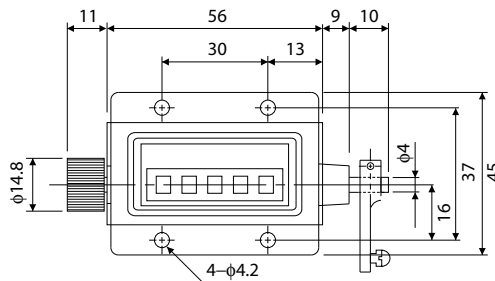
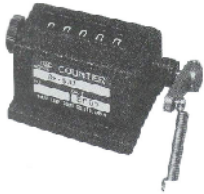
RS-4 (I)



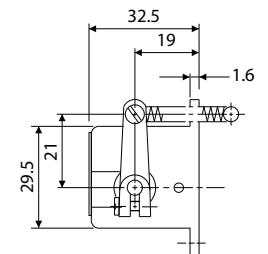
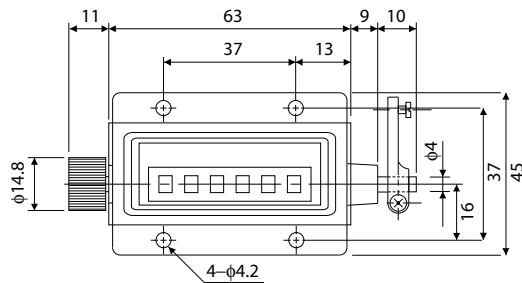
RS-5 (I)



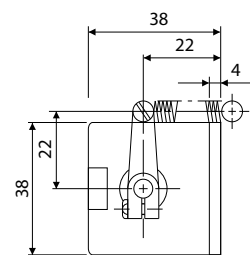
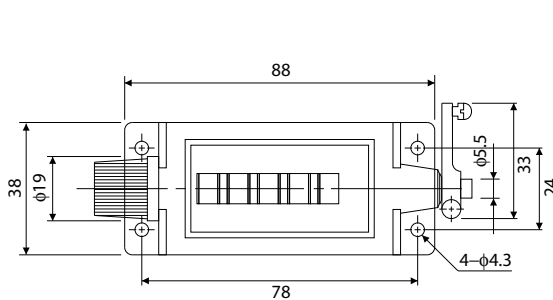
RS-5 (II)



RS-6 (I)

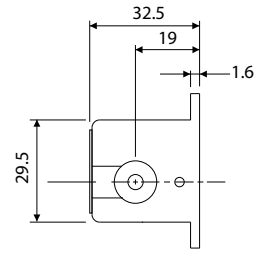
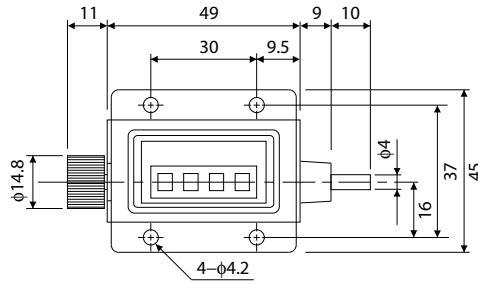


RS-303-5 (I)

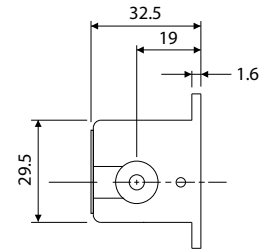
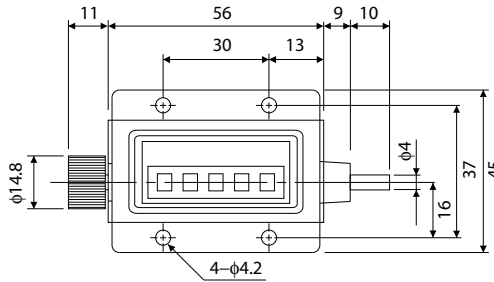


DIMENSIONS

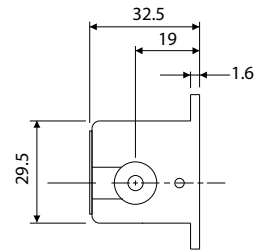
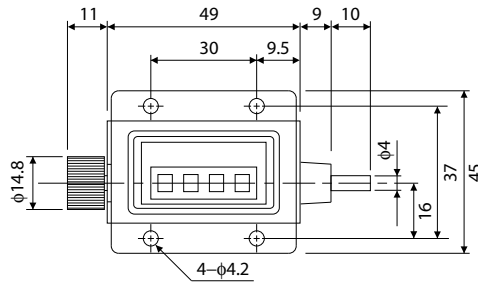
LB-4 (I)



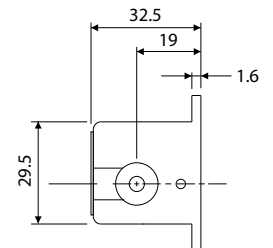
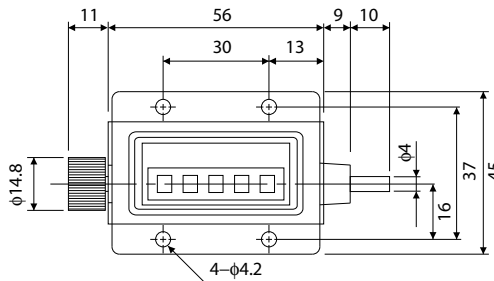
LB-5 (I)



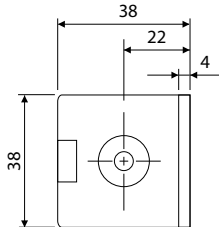
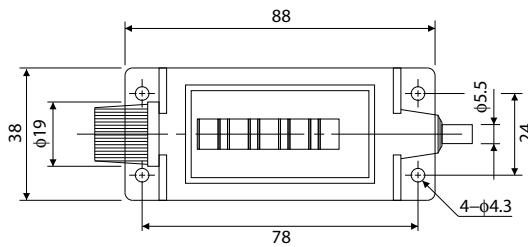
RL-4 (I)



RL-5 (I)



RL-219-5 (I)



* Specifications Subject to Change Without Prior Notice
All Rights Reserved, Copyright © 2003 Line Seiki Co., Ltd.
2003.07.11.3260A



LINE SEIKI CO., LTD.

Address : 37-7, Chuo-Cho, 2-Chome, Meguro-ku
Tokyo 152-0001 JAPAN

Contacts : Tel: +81-3-3716-5151 Fax: +81-3-3710-4552
E-mail: sales@line.co.jp

URL : <http://www.line.co.jp>